

OUR NELSON

TŌ TĀTOU WHAKATŪ

Issue 140 • 9 March 2022

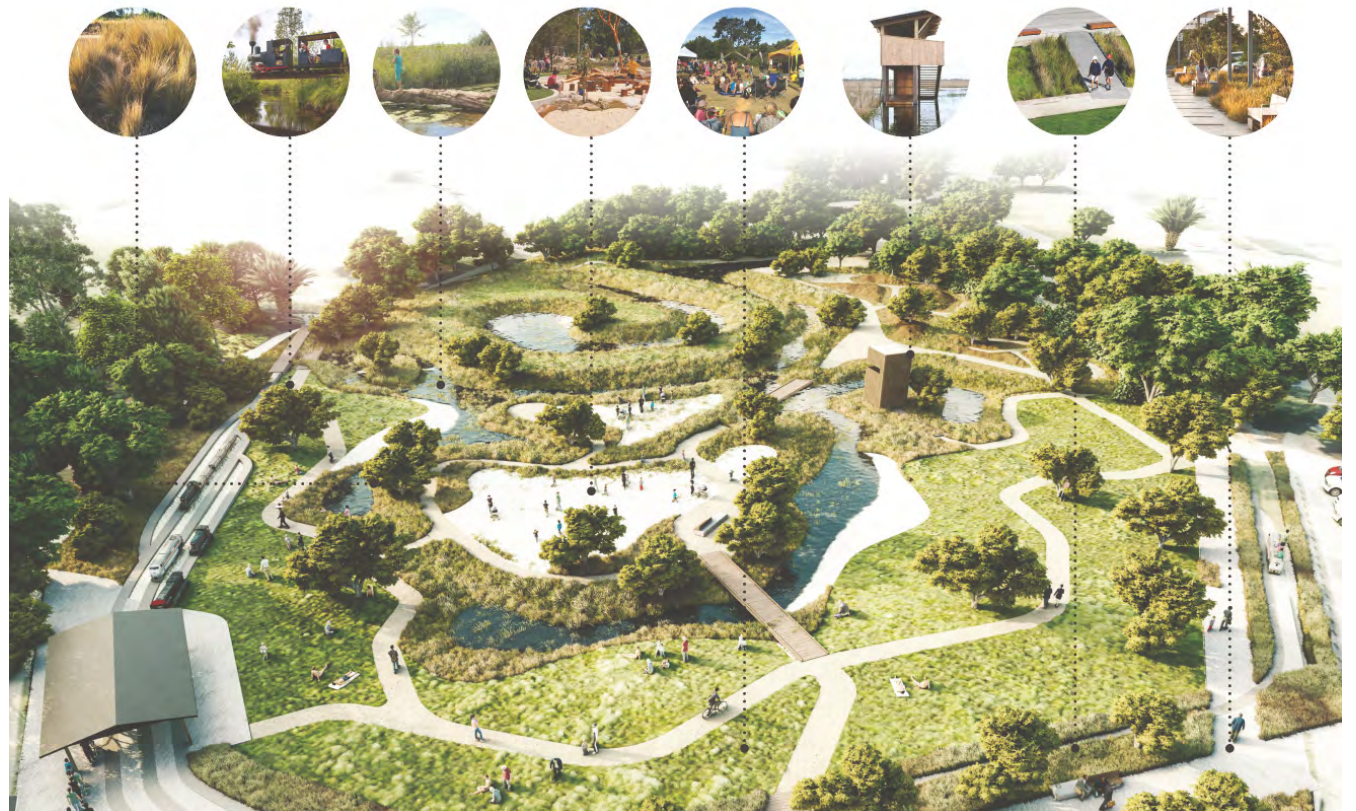
Keep up to date with the latest news from Nelson City Council



2 Future Development Strategy consultation goes online



6 What's stopping you? Get involved in local government



The flax that binds us: Modellers' Pond park gifted name Te Pā Harakeke

Te Kaunihera o Whakatū (Nelson City Council) kaumātua have gifted a name to the park being built on the previous site of the Modellers' Pond.

Elected members at the Community and Recreation Committee meeting on 3 March, 2022 unanimously voted to accept the gift of the name Te Pā Harakeke, which is a Māori whakatauki, or proverbial saying, about the importance of whānau (family). This is symbolic of the area's importance to families and the underlying purpose of the new family-friendly park.

The next step for Te Pā Harakeke will be a decision to formally adopt the name at the Hearings Panel on 23 March.

Harakeke is te reo Māori for flax. 'Te rito o te harakeke' is the centre shoot or growing point of the plant, likened to a child. The awhi rito, or parents, are the two shoots immediately on either side the rito. The outer shoots are the tīpuna or grandparents.

Kaumātua Luke Katu says:

"Te Pā Harakeke represents a multi-generational whānau network, with the younger, newer harakeke growing from the centre, surrounded and protected by older, more experienced generations."

Community and Recreation Committee Chair Tim Skinner says the name is a wonderful reflection of the park's history and future.



"This area has been a place for families for decades and it holds a special place in Nelson's heart.

"I'd like to thank our kaumātua (Whaea Melanie and Matua Luke) for gifting such a thoughtful name. I'd also like to acknowledge the Modellers' Society, in particular Chairman Nigel Gibbs, for the dedication and care they have shown to this part of our City and are now working to extend the model railway track. I know this is a hard change for them, but we very much appreciate being able to work together on this project."

The cultural heritage of the site, a unique estuarine environment that is home to many native species, goes back more than 600 years. Tāhunanui was not a pre-colonial settlement name but was approved in 1911. Until the twentieth century, the area was known as 'The Sands' or Tāhuna, and its customary Māori name remains unknown. Māori had a kāinga (village) at Tāhuna from the earliest days of human settlement in Aotearoa, which has been dated to c.1361 AD.

The new name was supported by attendees at the Iwi-Council Partnership Group (Ngāti Kuia, Ngāti Koata, Ngāti Rārua, Te Ātiawa and Ngāti Toa Rangatira) hui on 1 December 2021, with no disagreement received from iwi not in attendance.

Kaumātua were then invited to name and bless

the site. Within Te Ao Māori, a name may be offered to a site, building or taonga during a ceremonial blessing, and those leading the proceedings are entrusted to consider an appropriate name to be bestowed.

Council currently has three naming policies and guidelines:

- Road Naming Guidelines 2008
- Naming of Reserves and Other Features Policy 2004
- Naming Rights and Sponsorship Policy for Community Services Facilities 2009

Council is working on a new naming policy that better reflects Nelson's heritage, culture and identity, ensuring that aspects of Te Ao Māori are always taken into consideration when new reserves, parks, buildings, services and roads are named.

Councillor Skinner says he can't think of a facility that has brought more joy to a community over so many years.

"The Modellers' Pond and Society have brought happiness to Nelson families as far back as I can remember. It's been an emotional journey to get where we are today, accepting this insightful name for our new park."



Native fish rescue mission at Nelson's Modellers' Pond

Native fish, including eel (tuna) and whitebait (inanga), have been relocated from the Modellers Pond to nearby freshwater streams as Council's contractor drained the pond so it can be transformed into a family-friendly park.

The fish rescue team included representatives from Nelson City Council, Fish and Wildlife Services, the Department of Conservation (DOC) and Taylors Contracting, the firm responsible for deconstructing the pond and creating the new park.

"About a third of the eel (tuna) saved were the 'at-risk, declining' long-fin variety, including some large breeding females," says Team Leader Rebecca Dawkins.

"Council's deconstruction policy means that where we remove buildings and structures, we leave as small a footprint as possible. Protecting the native wildlife in the pond and giving it a chance to thrive in a more suitable environment is very much part of that culture."

Renan Falleiros from DOC described how the rescue took place.

"The pond outlet was blocked yesterday at low tide, and the contractors started to pump the water out this morning. A 3mm mesh was placed over the pump's intake

to make sure no fish were pumped out, and a deeper hole was dug in the pond and surrounded by rocks to cordon off the eel and inanga so they could be caught."

Once the water has been emptied from the pond, rocks will be laid down and then covered with clay. This will be compressed by a tractor to create a good base for the park.

The Tāhunanui Reserve park is due to be completed by winter and will include seating, picnic areas, trees planted for shade, natural play areas, boardwalks, a sheltered lookout for birdwatching, and a proposed shunting yard that will complement the model train tracks.

The final design also includes estuarine planting and low-lying areas that will sometimes be inundated by king tides.

This is a feature of the new park, with the tides continually moulding the shape and character of some of the play spaces.

Future Development Strategy consultation goes online

Nelson City Council and Tasman City Council are currently working on a joint 2022 Future Development Strategy (FDS), and it will soon be time for you to tell us what you think.

The FDS is a strategic plan that covers residential and business growth within the Nelson and Tasman regions over the next 30 years.

The strategy looks at how and where Council can create more capacity for development (for housing and business) and identifies the infrastructure required to support it.

The FDS does not rezone the land but it informs councils' Resource Management Plans. Before the FDS is adopted by both councils, it will go through a Special Consultative Procedure where the public will be able to make a submission on the strategy.

This consultation period will run for the period 14 March 2022 to 14 April 2022. Hearings are scheduled for April and May and following deliberations, the FDS may be adopted by both councils in July 2022.

Due to the current Red setting in the COVID-19 Protection Framework, in-person community consultation events

on the FDS will not take place. Instead, we have planned a comprehensive online consultation programme.

In Tasman, potential sites include: Richmond, Hope, Brightwater, Wakefield, Māpua, Motueka, Tasman, Tākaka, Collingwood, Tapawera, Murchison and St Arnaud.

In Nelson, sites with development potential include; Stoke, Nelson city centre and Atawhai.

To ensure any business or residential growth occurs in a way that best benefits those who live here now and in the next 30 years, it is important that we engage with our community.

For details on when online consultation opportunities will take place, go to shape.nelson.govt.nz/future-development-strategy.

You can read our FAQs for the FDS at: shape.nelson.govt.nz/future-development-strategy#faqs.







Antenno
Be informed. Get involved.

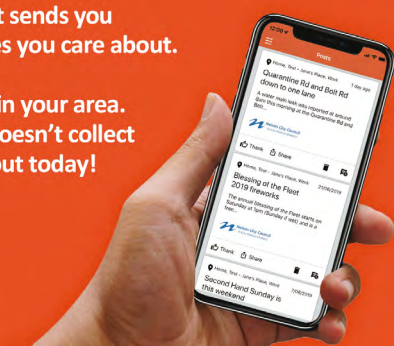
Stay up to date!

Antenno is a mobile app that sends you notifications about the places you care about.

It also lets you report issues in your area. It's free, easy to install and doesn't collect any personal data. Check it out today!

nelson.govt.nz/antenno





Mayor's Message

The progress of Omicron through our community continues to pose many challenges in all parts of our lives.

With the rise in numbers infected and the associated impact on those living with them, the impact on our local economy continues to increase, with many businesses having to reduce their services or close completely as staff are affected.

The good news is that we continue to respond extremely well as a community in terms of good levels of vaccination and managing the higher levels of infection.

Having said that, we need to continue to make sure as many people as possible receive their booster shots to maximise our levels of protection.

While most parts of our economy have been affected to some extent, the horticultural sector is in the crosshairs at the moment, in terms of addressing severe labour shortages.

Unless we have the staff at this critical time, many crops could literally "wither on the vine". Hence the call for "all hands to the pump" to help alleviate this system.

The original context for the phrase was when a leak in the hull of a ship needed everyone to pitch in helping to bail out the incoming seawater. So this applies to our situation.

If you haven't previously thought about a little healthy work in the outdoors, now might be a good time to reconsider.

And while there is an immediate opportunity for locals

to take up employment during the harvest period, we can also do our bit as a community to help spread the message throughout the country about opportunities to pick up a job in the region's thriving horticulture and viticulture industries.

With good wages on offer, great weather guaranteed, beaches, beverages, outdoor activities, and everything in between, seasonal work in the Nelson Tasman region really is the perfect pick.

To support this, the Nelson Regional Development Agency has established a website picknelson.nz to make it easier for locals and people from anywhere in the country to register and access employment.

Job seekers who register for the campaign can browse job listings or seek help from a recruitment coordinator who can match them with the right job, as well as assist with transport and accommodation. Applicants don't need to be an existing MSD client to qualify for this assistance.

Word of mouth is often the most powerful communication channel, so now is our time to do our bit.

Ngā mihi



Quiet Hour includes a dimly-lit relaxing room with bean bags, sensory toys, and weighted blankets.

Weekly Quiet Hour for library

Every Tuesday morning, Elma Turner Library will hold a Quiet Hour to make the library more accessible for people who find loud, busy spaces challenging.

Visitors will find computers off, sounds minimised, and artificial lights dimmed to make the library more welcoming for people with hypersensitive conditions such as anxiety, autism, intellectual disabilities, dementia, or other neurodiverse conditions.

"A modern library can have a lot going on, with kids, computers, loud sounds, and bright lights," says Libraries Manager Sarina Barron.

"We are making our library more welcoming for people with hypersensitive conditions by making it a less stimulating environment for one hour each week."

A spokesperson for the Nelson/Marlborough branch of Autism New Zealand, Marie McManaway, says Quiet Hour offers a great opportunity for people with different needs to engage in the community.

"The Quiet Hour will be useful for families and carers of people with autism to go somewhere together and have a nice experience. It's important for people with autism to have a time each week which is designed for them to gain access to the library collection and everything else the library has to offer."

Quiet Hour will also include a sensory map that identifies any bright or noisy areas, so visitors know what to expect in the library.

Mayor Rachel Reese says Quiet Hour is another innovative way of serving Nelson's diverse community.

"Libraries are really important for our community as places to discover, learn, and create. It's great that people with autism, dementia, and other neurodiverse conditions will have a quiet, peaceful time to visit the library," says Mayor Reese.

Communities and Recreation Committee Chair Tim Skinner says Quiet Hour shows that public facilities can adapt to the needs of different groups.

"Quiet hours are common in locations like supermarkets and large stores like The Warehouse, and the library is such an important part of our community that it makes sense to offer this service to the wide range of library users."

All library visitors are welcome during Quiet Hour, and normal library services are available. However, it is a time designed for people with different needs to visit, so library users are asked to please be respectful by switching off phones and keeping the space quiet.

Quiet Hour will take place on Tuesday mornings, 9.30am - 10.30am from 8 March 2022. See nelsonpubliclibraries.co.nz for more details.

Marie McManaway of Autism New Zealand is available in Nelson and Marlborough to provide support, information, and education on autism. Email Marie.McManaway@autismnz.org.nz



Rent relief part of support package for Nelson hospitality sector

Nelson City Council is extending rent relief for outdoor dining, street stallholders and concession holders until 30 November 2022.

Nelson Mayor Rachel Reese says while the new support package will provide some assistance to businesses in need, the key to keeping Nelson businesses in the best shape possible through the pandemic is for people to get out and support them.

"There will be disruptions due to staffing issues but these will be temporary. Our vaccination rates are excellent although they can always be improved and boosters are critical."

Mayor Reese says as long as we're following the guidelines, we can go about our lives as normally as possible in these times.

"Businesses are doing their part to work together to minimise the impact on their customers when disruptions and temporary closures happen."

She says it is essential that Council supports Nelson's hospitality sector as they cope with loss of trade due to the Omicron outbreak.

"Council is committed to supporting Nelson's vibrant hospitality sector, which has had a tough couple of years. I'd like this package of support to help business survive this period and for people to come and support them now."

The support package offered by Council runs in conjunction with the central government announcement on Monday 21 February, providing businesses that have suffered a 40% loss of revenue due to Omicron with financial support.

President of Hospitality New Zealand's Nelson Branch Ian Williams said any reduction in outgoings for hospitality providers was welcomed.

"When Omicron arrived and we shifted into Red setting on 23 January, our summer season effectively ended on top of a poor summer with cancelled events, and I know a lot of businesses are struggling more than at any other time. This

rent relief will help those smaller providers and those with outdoor dining facilities continue to be able to offer this option at a time when many patrons prefer to sit outside."

As well as rent relief, Council is looking at a range of other ways to support the sector. The following actions are underway or being planned:

- A city-wide graffiti sweep and extra cleaning at Upper Trafalgar Street so the city is looking its best.
- Potential support from the Events Fund for small-scale events like buskers in the city centre, Stoke and Tāhunanui.
- Assistance with the sector's recovery once the Omicron peak has passed. This could include advertising, local street art initiatives, and funding for events from May and beyond.
- Supporting the work of Uniquely Nelson in keeping the retail and hospitality sector afloat.

Nelson City Council first offered rent relief for outdoor dining, street stallholders and concession holders in March 2020 for three months. This was further extended to the end of November 2020. Rent relief was reintroduced in March 2021 and was due to end at the end of this month.

To date, 20 licence holders in Nelson have applied for relief, collectively saving over \$60,000. The estimated cost to Council of extending the relief to the end of November is a further \$42,000, met by COVID-19 relief budgets.

Mayor Reese urges all outdoor dining, street stall and concession holders to apply as circumstances may have changed since this relief was first offered.

To qualify, licence holders need to provide Council with turnover for the last three years verified by their accountant, demonstrating a downturn in revenue.

Gloucester Street watermain replacement completed

A new 200mm watermain pipe has been installed on Gloucester Street, replacing the existing pipes that were approaching the end of their useful life.

The project was completed ahead of schedule, and with an 80-year life span, residents and businesses can look forward to continuity of their water supply into the future.

The next stage of this work will occur between 26 Gloucester Street and the St Vincent/Gloucester Street roundabout. This is scheduled to go ahead in the next few years.

Council has committed to a significant investment in Nelson's infrastructure as it upgrades the water network to cope with increased demand.

The most recent Long Term Plan budgeted \$496m over the next ten years for core infrastructure projects.





Report pollution fast!

If you see pollution in the Nelson area, ring the Council hotline (0800 NO POLLUTE) immediately to report it.

Quick reporting ensures that Council is able to respond as quickly as possible to prevent and mitigate pollution incidents.

Stormwater drains are particularly vulnerable to pollution, as they lead directly into our rivers and streams. Any substance such as sediment, paint, diesel, or chemical that is washed into the stormwater drain has the potential to cause a freshwater pollution problem in our rivers, streams and harbour.



Climate Action

Reduce emissions and save money on your power bill

An important part of Council's role in responding to climate change is to provide information to our community about opportunities to access funding and grants towards renewable energy or energy efficiency. For example at both a national and local level there are interest-free bank home loan top-ups, Energy Efficiency and Conservation Authority (EECA) grants and other government programmes.

There are several options currently available to Nelson residents, including:

Warmer Kiwi Homes programme

In the last year, 181 Nelson household owners received grants that covered between 80-90% of the cost of ceiling and underfloor insulation for their residential houses, or towards the approved heaters. Since the project started in 2014, more than 1200 Nelson households have taken advantage of this funding.

Nelson City Council, EECA and other external parties' contributions have helped to support the scheme, contributing not only to the health of our community but also reductions in energy, decreasing our overall household carbon footprint. Council has contributed more than \$600,000 to the programme since it began in 2015.

- There are still many eligible homeowners in Nelson – go to tools.eeca.govt.nz/warmer-kiwi-homes-tool to see if your house is eligible for this grant.

Loans

- **Westpac Warm up:** \$10,000 interest free for five years to invest in heat pumps, insulation and

more. westpac.co.nz/home-loans-mortgages/options/warm-up

- **Kiwibank sustainable energy loan:** If you borrow more than \$5,000, Kiwibank will contribute up to \$2,000 over four years towards the cost of the system. Check eligible systems at: kiwibank.co.nz/personal-banking/home-loans/managing-your-loan/sustainable-energy-loan

Electric vehicles

If you've been considering the shift to an electric vehicle (EV) or plug-in hybrid (PHEV), the clean car discount rebate is open till 31 March 2022. The rebates range from \$3,450 for a used import EV or \$2,300 for a used import PHEV. Check eligibility criteria at nzta.govt.nz/vehicles/clean-car-programme/clean-car-discount/eligibility-criteria

By implementing energy efficiency measures at home, you are not only supporting the reduction of greenhouse gas emissions, but also saving money in the long term. These incentives are some of the ways that can help people to consider more energy efficient ways of living, by reducing upfront costs.

Clean Car Discount rebate

Rebates 1 July 2021 to 31 March 2022

What are the rebates?

New EV: \$8625*	New PHEV: \$5750*	Used EV: \$3450*	Used PHEV: \$2300*
-----------------	-------------------	------------------	--------------------

Step 1

Buy

Choose an EV or PHEV

- New and used imports
- New registration
- 3-star safety rating or above*
- Less than \$80,000 including GST and on-road charges

Step 2

Apply online

Registered person applies online to Waka Kotahi for rebate

Provide the sale agreement, plate number and bank account

Step 3

Get your rebate

Waka Kotahi transfers rebate to registered person's bank account

Key
EV = Battery Electric Vehicle
PHEV = Plug-in hybrid electric vehicle

*Subject to available funding. All figures include GST.
*Safety ratings available at www.rightcar.govt.nz

Conewatch



Nelson City Council is constantly upgrading infrastructure in our City.

Whenever you see traffic cones, it's likely Council is improving our water, wastewater and stormwater network, transport links, parks and reserves or

publicly-owned buildings. Here's the work we've just completed and what's happening right now.

Completed:

Athol Street stormwater upgrade: current stage completed 3 March.

Ongoing:

Project Name	End Date (if known)	Location	Benefit
Haven Road Stormwater Realignment	31 March 2022	Haven Road and Vickerman Street	Improve stormwater and to facilitate Science and Technology Precinct
Residential Water Meter Renewals	June 2022	City-wide	Accurately measure water usage
Saxton Creek Upgrade Stage 4 – Main Rd Stoke to the sea	June 2023	Main Rd, Stoke	Flood mitigation
Airlie Street Stormwater Upgrade	Mid March 2022	Airlie Street, Glenduan	Upgrade stormwater
Modellers' Pond Redevelopment	June 2022	Tāhunanui Reserve	Create family-friendly park
Bellevue Heights Stormwater Upgrade	17 March 2022	Bellevue Heights, Tāhunanui	Upgrade stormwater
Washington Valley Infrastructure Upgrade	Early November 2022	Hasting Street	Improve stormwater network and reduce flooding risk
Maitai Recreation Hub	Mid May 2022	Maitai Valley Road	Recreation hub, pump track, off road cycle way, new carpark
Awatea Place Wastewater Pump Station	September 2022 (TBC)	Awatea Place & Parkers Road	Improve wastewater network capacity and reduce overflows
Millers Acre Recladding	January 2023 (TBC)	Millers Acre buildings	Extending life of building



Cemeteries and crematorium charges

In order to cover rising costs, fees and charges for Nelson City Council’s cemeteries and crematorium will increase from 1 July 2022.

Cemeteries have increased costs to allow for urgent burials to occur in weekends and public holidays. Previously, there has not been the ability to allow burials over these times. Charges will increase 6.5% plus 4.9% consumer price index (CPI) for 2022/23. Fuel costs have increased for the

Crematorium, and user charges will increase to reflect the true cost of delivering the service. The crematorium charges will increase 7.3% plus 4.9% CPI for 2022/23. It’s important that user charges recover the agreed portion of costs for our cemetery and crematorium services. For cemeteries,

cost recovery from users is set at 40-60% and for the Crematorium recovery is 70-90%. Ratepayers pay a portion of the costs of providing these services to make sure they are available when people need them and to ensure upkeep of areas accessible to the general public.

What’s stopping you?

Every election cycle, councils in New Zealand are asked to help increase the democratic participation of traditionally under-represented groups.

We want to know first-hand the barriers people in our community face in enrolling, making an informed vote, and standing for Council. With your help, we can identify some of these barriers and work together to remove them, making for more accessible and more

representative elections for everyone. If you want to provide us with your story or ideas, fill in the survey at: shape.nelson.govt.nz/local-election-2022-diversity-and-participation. Feel free to leave your contact details, but you can also fill in the form anonymously.

shape.nelson.govt.nz/local-election-2022-diversity-and-participation

Vaccine walk-in clinic

Māori health and wellness provider Te Piki Oranga is offering Māori-focussed COVID-19 Vaccine Clinics at the following times and locations:

- Wednesday 9 March at Te Piki Oranga Whakatū, 17 Bishopdale Avenue, from 10am to 3pm
- Saturday 12 March at Greenmeadows/Pūtangitangi Community Centre, from 10 am to 3pm

Walk ins are welcome – no bookings required.

Tamariki over the age of five are also eligible so bring the whole whānau. If you’d prefer to book in advance, call 0800 ORANGA (0800 672 642) to make an appointment. There’s also some info about the vaccine campaign on the Te Piki Oranga website here: tpo.org.nz/get-vaccinated-covid-19



Blue rubbish bags no longer sold at Council

Nelson City Council will stop selling 65L blue rubbish bags from its customer service centre, Elma Turner Library, and Nelson Waste Recovery Centre from 31 March 2022, unless sold out prior.

Nelmac has sold the refuse part of its business to a private company, Smart Environmental, and people can still purchase the Betta-Bags blue rubbish bags from local outlets such as supermarkets, and dairies. Collection days remain the same. Any older Betta-Blue bag with the Nelmac logo is guaranteed to be collected by Smart Environmental for the next

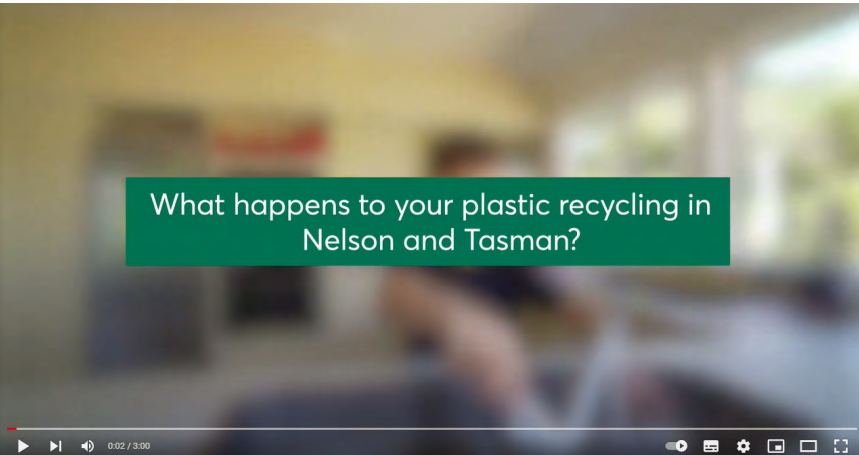
three years. Nelmac used to produce a sticker, more commonly purchased by inner city residents and companies that could be stuck to a box or non-official bag and these items would be collected like a blue bag. A reminder that Council stopped selling these stickers in January 2022.

Demystifying plastics recycling



Ever wondered what really happens to the plastic you put in your recycling bin? Wonder no more – we’ve put together a video that follows the journey of a plastic container all the way from the home, to its new life after it’s recycled.

Follow the QR code link to watch the video.





Please report sightings of blue passion flower

A new invasive pest vine, blue passion flower (*Passiflora caerulea*), has been discovered in the Nelson region.

This pest plant is not yet widely spread in Nelson, and we want to keep it that way.

Nelson City Council has already been in touch about this weed via letter with residents in the few blocks around Hampden Terrace.

Biosecurity officers would like your help with identifying other locations this weed may be present in Nelson and would like to hear from anyone who sees it either on private property or in the reserves.

Sightings can be reported by emailing biosecurity@ncc.govt.nz or phoning 03 546 0200. It can also be reported through the Antenno app nelson.govt.nz/antenno

Blue passion flower is a vigorous, high-

climbing vine native to South America that has the potential to invade and smother our forest canopy, preventing the establishment of new native plant seedlings, as well as invading streamsides, coastlines and cliffsides.

It grows quickly, and will become a nuisance weed in home gardens, growing readily from where its stems touch the ground, forming roots and new plants.

The distinctive 6-9cm flowers are similar to black passionfruit, but the leaves are distinctively five-lobed. It develops small, round, yellow-orange fruit, which contain small amounts of pulp that is inedible to humans, and silver-brown seeds that are spread easily by birds and possums.



MEETINGS

Council meeting

9am 10 Mar

Nelson Regional Sewerage Business Unit

9.30am 11 Mar

Civil Defence Emergency Management Group

8.30am 22 Mar

Joint Committee of Tasman District and Nelson City councils

9.30am 22 Mar

Forestry Subcommittee

1pm 22 Mar

Hearings Panel - Other

8.30am 23 Mar

Strategic Development and Property Subcommittee

9am 24 Mar

Environment and Climate Committee - to deliberate on submissions to Urban Environment Bylaw 2015 (No. 225) Review

1pm 24 Mar

Nelson Tasman Regional Landfill Business Unit

9.30am 25 Mar

Regional Transport Committee

1.30pm 29 Mar

Infrastructure Committee

9am 31 Mar

Changes to meetings

Hearings Panel - Other, previously advertised to take place on 23 March 2022 at 11.30am will now take place on 23 March 2022 at 8.30am

For a full list of meetings go to:

nelson.govt.nz/meetings

SECRET LIVES

SHORT STORY

COMPETITION

Brought to you by:

Broadgreen Historic House

A Nelson City Council venue

REVEAL A WINDOW

INTO OUR PAST...

Every dress has a story... we want to read yours!

A new national short story competition open to all NZ-based writers.

More than \$3,000 in prizes.

Broadgreen Historic House, which is home to a significant textile and period costume collection, invites stories of up to 1,500 words.

JUDGES:

ANNE KENNEDY

RACHAEL KING



Photo Credit: Robert Cross



Photo Credit: Matt Bielostocki

For all the details and how to enter: secretlivesshortstorycomp.nz

GOLD SPONSORS









Issue 140 • 9 March 2022

our.nelson.govt.nz 7



Clock tower lights up for Ukraine

The Nelson City Council clock tower was lit up blue and gold at night over the weekend to show support for the people of Ukraine.

Mayor Rachel Reese said the lights serve as a small gesture of solidarity for Ukrainians fighting for their freedom, independence and sovereignty.

"We hope for a speedy end to the acts of aggression inflicted upon the people of Ukraine and extend our deepest sympathies to all those affected by this conflict."

Thank you to John-Paul Pochin of Light Limited for arranging the light installation.



Due to the uncertainty around COVID-19 alert levels please ensure you check [itson.co.nz](https://www.itson.co.nz) regularly for event updates.

WHAT'S ON... at a Council venue near you



Kirby Lane

Kirby Fridays, every Friday night during summer, 4:30pm – 9:00pm

Founders Heritage Park

Tuku 22 Whakatū Heritage months, 1 April – 30 June

Isel House and Park

Isel Twilight Takeaway Market, every Thursday night from 30 September – Thursday 14 April 4:30pm

Senior Summer Activities – Spin Poi in the Park, Tuesday 22 March, 10am – 11am

Greenmeadows Community Centre

Upright & Able – Falls Prevention, Thursday 17 March, 1:00 – 3:00pm

Digital Day at Greenmeadows, Thursday 10 March, 10:00am – 1:00pm

Nelson Public Libraries:

Elma Turner Library

Hours:
Monday, Tuesday, Thursday, Friday:
9:30am – 6:00pm
Wednesday: 10:00am – 6:00pm
Saturday: 10:00am – 4:00pm
Sunday: 1:00pm – 4:00pm

Small Time at the Elma Turner Library, every Monday & Wednesday, 10:30am – 11:00am

Story Time at the Elma Turner Library, every Tuesday, 10:30am – 11:00am

Shared Reading for Wellbeing, every Tuesday, 11:30am – 1:00pm

Device Advice, every Tuesday & Thursday, 2:00pm – 3:00pm

STEM writers, every second and fourth Tuesday of the month 1:00pm – 3:00pm

Tea & Tales – Dementia Friendly Book Group, every Wednesday, 11:00am – 12:00pm

Library Knitters, every Thursday, 10:00am – 12:00pm

Young Adult Club, every second Thursday, 3:45pm – 5:00pm
Tea & Talk, every Friday, 10:00am – 12:00pm

Justices of the Peace, every Saturday 10:00am – 12:00pm

Quiet Hour every Tuesday from March 15, 9:30am – 10:30am

Rising Scientist every Monday from 14 March, 4:00pm – 5:00pm

Shared Reading for Wellbeing, every Tuesday, 11:30am – 12:30pm

Junior Reading Club, every Tuesday from 15 March, 3:30pm – 4:30pm

Media Club, every Wednesday from 16 March, 3:30pm – 4:30pm

Library Book Sale, Friday 4 – Thursday 10 March

Book Launch – In Amber's Wake by Christine Leunens, Saturday 12 March, 2:00pm – 3:00pm

Philosophy Discussion Group, Monday 14 March, 10:00am – 11:00am

Kids' Sewing Club, Wednesday 16 March, 3:30pm – 5:00pm,

Advance Care Planning, Thursday 17 March, 9:30am – 2:00pm

Digital Learning – Audio Entertainment, Thursday 17 March, 9:30am – 11:00am

Community Kōrero – Top of the South Neighbourhood Support, Sunday 20 March, 2:00pm – 3:00pm

Digital Learning – TV and Movie Streaming, Thursday 24 March, 9:30am – 11:00am

Digital Learning – Navigating your device, Monday 28 March, 2:00pm – 3:30pm

Digital Learning – News today, Thursday 31 March, 9:30am – 11:00am

Op Shop Fashion Challenge, Friday 1 April – Wednesday 25 May

A weekend of Chinese Board Games, Saturday 2 April, 10:00am – 2:00pm, Sunday 3 April, 1:00pm – 3:00pm

Karen Stadel and Diana Clark on Appo Hooton, Tuesday 5 April, 11:00am – 12noon

Nightingale Library Memorial.

Hours:
Monday, Wednesday, Friday: 1:00pm – 4:30 pm
Tuesday, Thursday: 10:00am – 2:00pm
Saturday: Closed
Sunday: 10:00am – 2:00pm

Stoke Library

Hours:
Monday, Tuesday, Thursday, Friday:
9:30am – 5:30 pm
Wednesday: 10:00am – 5:30pm
Saturday: 10:00am – 1:00pm
Sunday: Closed
Stoke Library Book chat, every third Wednesday of the month 5:30pm – 6:30pm

Museums and Galleries:

The Suter Art Gallery & Theatre

Hours: 9:30am – 4:30pm Daily

Refinery ArtSpace

Hours: 10:00am – 5:00pm, Monday to Friday & 10:00am – 2:00pm, Saturday

RAW 22 – work outside the edge, Saturday 19 February – Saturday 19 March

Nelson Provincial Museum

Hours: 10:00 – 5:00pm Weekdays, 10:00am – 4:30pm Weekends & Public Holidays

Dinosaur rEvolution – Secrets of Survival, Tuesday 19 October – Sunday 27 March

Event: Dinosaur rEvolution: Low-Sensory Hour, every Thursday & Saturday until 26 March, 9:00am – 10:00am