

OUR NELSON

TŌ TĀTOU WHAKATŪ

Issue 128 • 26 August 2021

Keep up to date with the latest news from Nelson City Council

Get involved and help us shape Nelson



shape.nelson.govt.nz



Ready and waiting: book your vaccination and protect whānau and community

Nelson City Council services at COVID-19 Alert Level 4

New Zealand entered a COVID-19 Alert Level 4 lockdown on Tuesday 17 August at 11:59pm

The key message from the last lockdown remains relevant: stay at home, save lives, get tested. This will stop any undetected spread in the community.

Only leave your home if you need to, and please wear a mask when you do. There are instances of people contracting the Delta variant simply by walking past someone with it.

Nelson Mayor Rachel Reese asked Nelsonians to take care of each other and respect the lockdown conditions.

"This was a sudden change for everyone, so I understand some people in our community may feel isolated and anxious. As the Prime Minister said last week, we have succeeded before by going 'hard and early', and I am confident we can do that again. Stay at home, wear a mask if you need to leave your house, and get tested if you feel unwell.

"Look out for friends, whānau and neighbours who may need a little extra help at this time. Make contact without breaking Level 4 restrictions and see where you can help."

Staying at home — what it means

We need your support to protect New Zealand and eliminate COVID-19.

- Everyone must now stay home.
- From 11:59pm on Tuesday 17 August you can only leave home to shop for groceries, access necessary healthcare, get a COVID-19 test, exercise in your local area, or go to work if you are working in an Alert Level 4 service and cannot work from home.
- Only make physical contact with those in your household bubble.
- From 11:59pm on Wednesday 18 August, anyone over the age of 12 must wear a mask inside any Alert Level 4 businesses and services that are still open and involve customer contact, including supermarkets, pharmacies and petrol stations. Staff must also wear a mask.

Do not worry, during this time you will be able to access all the essentials you need, including medicine and food.

Council Services

At all Alert Levels, Nelson City Council will maintain essential services, including refuse/recycling, public transport for essential workers, roading, water, wastewater, stormwater and its cemetery/crematorium.

Group Manager Infrastructure Alec Louverdis says Council has contingency plans in place for all of our core services, and Council officers are working with contractors to ensure these are now operational.

At Alert Level 4, you must stay home other than for essential personal movement.

We encourage you to wear a face covering and keep two metres distance from others when leaving your home. Especially if it is difficult to maintain physical distance from others.

You legally must wear a face covering if you are a customer or an employee involving customer contact at a business or service operating at Alert Level 4.

Unite against COVID-19

Future changes to contact tracing

Scanning QR codes or manual contact tracing will soon be mandatory.

This will become effective seven days after any change in Alert Level settings that might allow more businesses to open or gatherings to go ahead.



Facilities:

All Council facilities are closed, and many other services cannot run at Alert Level 4.

Council has closed all of its indoor community facilities. This includes our three libraries and all our community centres, swimming pools and venues including Saxton Pavilion and Oval, Trafalgar Centre, Greenmeadows, Broadgreen House and Isel House. Greenmeadows and Trafalgar Centre are being used as vaccination centres.

The Customer Service Centre at Civic House is closed. Staff are working remotely and only accepting calls and emails.

Libraries:

Nelson's three libraries – Elma Turner Library, Stoke Library and Nightingale Library Memorial are closed under COVID-19 Alert Level 4.

No returns can be made to the library at this time, however, no fees will be incurred.

Existing library card holders have access to thousands of e-books, audiobooks, newspapers, magazines and movies, television shows, documentaries and courses offered as part of the Library's extensive online services.

The Library's online catalogue includes more than 13,000 eBooks and audiobooks, 2400 newspapers and 3900 magazines via PressReader and more than 30,000 movies, television shows, courses and documentaries with Kanopy. If you're not already a member of the library, you can join now from home. Visit nelsonpubliclibraries.co.nz and select 'Digital Only Membership' on the online form. Take note of your temporary membership number and four-digit PIN as you will need this to sign-in to our online resources.

If you would like help accessing these items, please get in touch by emailing library@ncc.govt.nz or completing a Book a Librarian form and one of our friendly staff will come back to you by phone, email or zoom.

nelsonpubliclibraries.co.nz/online/book-a-librarian

Playgrounds, outdoor exercise equipment, drinking fountains and public toilets:

Council's community playgrounds, exercising equipment and drinking fountains are closed, please do not use them. While we know there is a need for the community to get fresh air and exercise, keeping the equipment sanitised is not possible, and the risk of passing on the virus is too high.

In line with government guidelines, only public toilets on a main freight route or where requested by an essential service remain open. While these toilets will have increased cleaning, we advise the public only to use these in an emergency.

Rubbish and Recycling:

Kerbside recycling collection will continue, but all collected materials except glass, will go to landfill. Nelsonians have the option of storing clean recycling, if they can do so safely, until normal service resumes.

All five Tasman District Resource Recovery Centres and the Pascoe Street transfer station are closed.



Public Transport:

Bus services are for essential services staff and travel only. Payment is contactless through Bee Card and there will be safe distancing introduced on buses. Mask use remains in place, as does extra cleaning of buses.

Nelson's bus service for routes 1 and 2 will operate a Saturday timetable with the addition of 7am and 7:30am services.



Nelson's reserves and mountain bike trails

You can walk, run or cycle around your neighbourhood, or your local reserve, provided it is readily accessible from your residence. Always keep a 2-metre distance from people not in your bubble at all times.

Stick to simple outdoor exercise and avoid areas where you can get injured or lost, or that have narrow tracks that make social distancing difficult or dangerous.

Nelson's Maitai and Roding Water Reserves (including the Maitai Dam) are closed to the public for all recreation, to protect key staff who work in these areas from potential exposure to the COVID-19 virus.

Tahunanui Beach Reserve, Saxton Fields and Branford Park are closed to vehicle access.

The Marsden Valley Dog Park in Stoke is closed. The vehicle entrance gate to the park on Marsden Valley Road will be closed, as will the gates to the exercise area.

All Nelson and Tasman's trails are closed to mountain bikers. There may not be signage up on all the trails to indicate this, but they should be treated as closed.

Nelson Marina

Access to the Nelson Marina Ramps/Pontoons is restricted; only berth-holders may access these areas. Walkers and Bikers who live locally are still allowed to use the public walkways and roads. The government's Alert Level 4 restrictions apply to all berth-holders and their access to the Marina.

The Marina hardstand is closed during lockdown, and Travelift is for emergency lifts only.

Recreational fishing is not allowed under Alert Level 4 restrictions and the boat ramp remains closed.

Campgrounds

The Maitai Valley Motor Camp and the Brook Valley Holiday Park are closed to new arrivals, but will continue to operate for permanent occupants and existing guests.

Freedom camping sites are closed. Freedom Campers are encouraged to get home, if this is not possible then to go to a campground that is capable of taking new arrivals. If financial help is needed, please get in touch with the Ministry for Social Development.

Local bus services operate as follows:

Atawhai
0700 0800 0930 1030 1130 1240 1310 1410 1500 1600 1700

Brook
0730 0830 0900 1000 1100 1210 1310 1410 1530 1630 1730

Hospital
0700 0730 0930 1030 1140 1240 1340 1440 1530 1630 1730

No Stoke loop and No Richmond Loop services.

Total Mobility remains for essential travel only, and there are no changes to the scheme regarding fares at this stage.



Rates:

Council understands the recent move to Alert Level 4 may have placed financial pressure on some people.

We are encouraging ratepayers struggling to pay rates invoices due 20 August to contact us to explore a range of solutions dependent on their circumstances. These include rates rebates for those eligible, direct debit amendments, manageable payment plans with lower fixed weekly amounts, or spreading their current and future rates over an extended period via direct debit. Non-payment penalties will not be charged if a payment plan is in place.

If you require assistance, wish to make a payment arrangement for this account, or need help paying your rates while our council offices are closed, please get in touch with our Customer Service Centre on 03 546 0200 or email customer.service@ncc.govt.nz.

Building inspections:

All building inspections have been suspended. Duty building officer appointments may still be booked, these will have to be undertaken remotely via phone or Zoom. It is business as usual for the rest of the building team, but at a reduced capacity due to working remotely.

Water meter readings:

Nelson City Council will also not carry out water meter readings during Alert Level 4.

This is to ensure the continued safety of the public and our meter readers who are usually required to attend properties.

Reading of both residential and commercial water meters and the subsequent invoicing will recommence once at Level 2.

If people are having difficulty paying their water accounts, please call the Customer Service Centre on 03 546 0200 or email enquiry@ncc.govt.nz to discuss a manageable payment arrangement.



Funerals and tangihanga

Council will continue to provide burial and cremation services within Alert Level 4 restrictions.

If whānau and families have any questions, they should contact their funeral director.

For more information visit the Ministry of Health website.

Mayor's Message

A week ago, I was in Auckland speaking at a conference on Affordable Housing and Investment. It was the first time I had been to Auckland since early 2020 and it was great to be in the city, if only briefly.

When the news came of a community case of COVID-19, I was getting ready to go to the airport. It was a slow and anxious trip as people left the city to get home. I waited for the Prime Minister's 6pm announcement, knowing that lockdown would be coming, before I boarded my plane to Nelson and hoped I hadn't been in contact with the virus (so far so good as I regularly check places of interest).

The Government had made it very clear, that any Delta outbreak in our community would be dealt with swiftly and severely. Watching the news from Sydney, and the extensive number of contacts that are involved in this community transition, we can see Level 4 was the only viable option.

So here we are, back in our bubbles, teddy bears in windows, and tuning in for the 1pm daily briefing. Events are cancelled, businesses are closed, and family and friends are separated.

Lockdown is a blow for local businesses who cannot operate, with some losing bookings and orders that cannot be replaced. The wage subsidy and support package is welcome relief, but a tough year just got tougher.

Nelson Marlborough Health

and Nelson Bays Primary Health have been flat out making sure COVID-19 tests are available and vaccination continues. Thank you to all of these teams who are taking care of us so well.

There are a few simple things that you can do to help:

- Wear a face covering to keep you and others safe.
- Use the COVID Tracer app to enable faster contact tracing.
- Get vaccinated to protect yourself, your whānau, and our community.

From 25 August, everyone in our region over 30 can get their vaccine. The Trafalgar Centre is now set up to receive up to 10,000 people a day, so please take up the opportunity this week.

We know we can do this; we did it before and our team of 54,000 along with the rest of the five million, can do it again.

Kia kaha Whākatu.





Stay up to date!

Antenno is a mobile app that sends you notifications about the places you care about.

It also lets you report issues in your area. It's free, easy to install and doesn't collect any personal data. Check it out today!

nelson.govt.nz/antenno





Future changes to contact tracing

Scanning QR codes or manual contact tracing will soon be mandatory. This will become effective seven days after any change in Alert Level settings that might allow more businesses to open or gatherings to go ahead.



Local elections are changing in Nelson – have your say!

The way Nelson elects councillors will change for the 2022 local elections, after Nelson City Council chose a preferred representation option that introduces wards, at a Council meeting on Thursday, 12 August.

Council was already scheduled to carry out a representation review in 2021, but a decision in May 2021 to create a Māori ward made the review essential.

Councillors voted on a preferred option to segment Nelson into two general wards, to be created alongside the Māori Ward. One ward would be for north and central Nelson, including Bishopdale – provisionally called the Central Ward. The other ward would cover Stoke, Tahunanui and Marsden Valley – provisionally called the Stoke-Tahunana Ward.

The boundaries of each ward are outlined in the map to the right.

The Local Electoral Act 2001 provides a formula for calculating the minimum number of councillors that need to be elected from wards, based on the ratio that determines the number of Māori ward councillors. To maintain that ratio, a minimum of eight councillors need to be elected from the ward system.

Both wards would have four councillors attached to them, with a further three councillors voted for by the whole community (at large). Each ward councillor would represent just over 6,000 constituents. The Māori ward, which currently covers a population of 3,280, would have one councillor. The Mayor is always voted for at large.

The preferred options took into account results from a community survey held between mid-June and mid-July 2021. It sought views on the factors Council must weigh up when forming an initial proposal. The survey received 253 responses.

Nelson Mayor Rachel Reese says the proposal

provides a balance between wards and at-large councillors.

“The survey results showed that most respondents preferred a mixed system, where some councillors are elected by ward, and some by the city as a whole regardless of the electoral roll the voter is in.

“I believe this particular mix offers the best of both worlds, with three councillors and the Mayor elected by the entire community. We now want to know whether you support this option. This is a great opportunity to help shape the future of democracy in this city.”

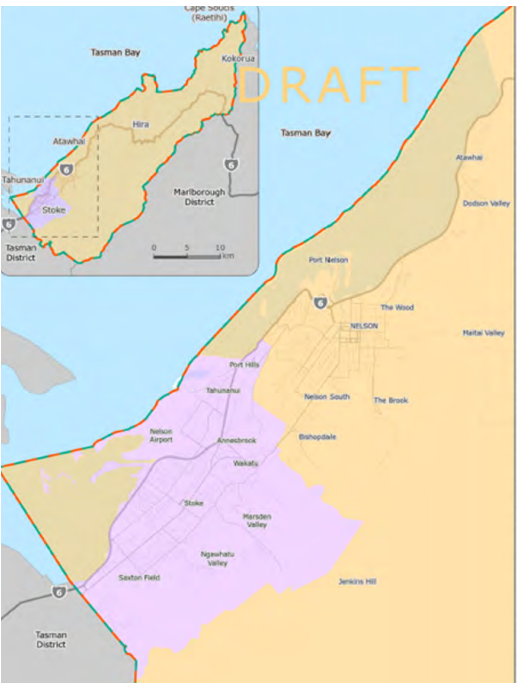
Survey results showed just over half the respondents did not want community boards to be established. Additional comments noted that a community board or boards would add unnecessary layers of cost and bureaucracy to Council.

“One of the most common responses we received was to see more diversity on Council,” said Mayor Reese. “The Māori ward goes some way to supporting that, as does our change to the Single Transferable Vote system (STV).”

Council voted to move to the STV system in August 2020. Council will provide Nelsonians with guides to the new system in 2022, ahead of the local elections.

Those with an interest in the proposed representation arrangements are invited to make written submissions on the Council’s representation proposal. Please let us know in your feedback if you wish to speak to your views at a hearing of Council.

Submissions can be made online at shape.nelson.govt.nz/representation-review, by email to elections@ncc.govt.nz



ncc.govt.nz, or by mail to Deborah Nicuarta-Smith, Nelson City Council, PO Box 645, 7040 or by calling our Customer Service Centre on 03 546 0200.

Submissions must be received by Council no later than Friday 17 September 2021.

For more information, please contact Deborah Nicuarta-Smith: 03 546 0391 or deborah.nicuarta-smith@ncc.govt.nz.

Notice of proposed lease renewal for the Tahuna Beach camp at 70 Beach Road, Tahunanui, Nelson

Public Notice Date: 13 August 2021
Closing date and time: 10 September 2021 at 12am

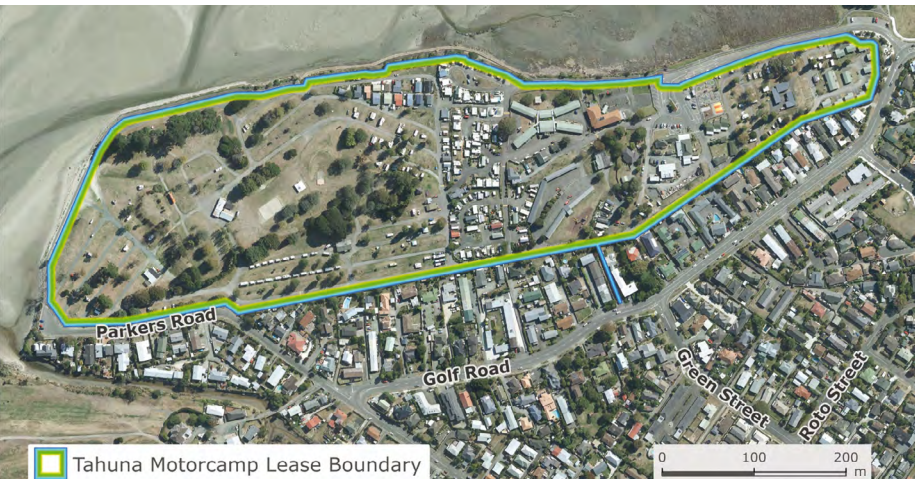
Council proposes to renew the lease for the Tahuna Beach Camp at 70 Beach Road with the Tahuna Beach Camp Incorporated Society.

The proposed renewal is for an initial term of eleven (11) years with two rights of renewal of eleven (11) years each.

To provide feedback on this proposal please contact Council:

- Online at Shape Nelson: shape.nelson.govt.nz/tahuna-camp
- By phone on 03 546 0200
- Or by email enquiry@ncc.govt.nz

Feedback is open from 13 August 2021 to 10 September 2021.



Draft Whakamahere Whakatū Nelson Plan – River flooding, Port Nelson noise, and airport zone/airport noise

The engagement period for the next stage of the Draft Whakamahere Whakatū Nelson Plan (the Draft Nelson Plan) was due to start last Wednesday (18 August 2021).

However, the change to Alert Level 4 meant Council was unable to send out letters to the vast majority of property owners affected by the information, or to hold any of the planned engagement sessions with our community.

Therefore we have made the decision to pause the engagement period until the letters can be sent (Alert Level 2). From then, Council will ensure there is at least four weeks for the community to give their views on the three latest topics of the Draft Whakamahere

Whakatū Nelson – river flood hazards, the airport zone and airport noise, and Port Nelson noise options.

You can view and read more information including maps, draft rules, reports, FAQs and technical information online at:





Cancellation, postponement for Four Lanes Festival and Youth Lane events

Nelson’s 4 Lanes Festival has been cancelled, and the complementary Youth Lane event postponed as a result of the COVID-19 Alert Level restrictions.

Both free community events were due to take place on 28 August, 2021. The 4 Lanes Festival was expected to bring thousands of people into four "lanes" of the city centre for live music, performances, dancing, games, rides and food, and is unable to be held above COVID-19 Alert Level 1.

The festival has taken months of planning and organisation and involved the coordination of hundreds of performers, artists and suppliers from throughout the country. Because of this, it is not possible to postpone the event.

Youth Lane, run by Nelson City Council, was to be run concurrently with 4 Lanes but focused on events, games and activities for people aged 14-18. Although much smaller than 4 Lanes, it was still expected to attract crowds too large to be able to take place above COVID-19 Alert Level 1.

However, the smaller number of operators involved in Youth Lane means it should successfully be able to be

rescheduled and has therefore been postponed until later in the year. A new date for the event will be set in due course.

Nelson Mayor Rachel Reese said it was very disappointing to see the 4 Lanes Festival cancelled but was the right call in the circumstances.

"Four Lanes is a wonderful event that brings people from all over into our city for a lively night of fun, food and entertainment. We've been fortunate to enjoy some excellent community events in our city this winter, but unfortunately, this time, COVID-19 has meant a necessary change of plan.

"While 4 Lanes is unable to be postponed, it is heartening to see the new Youth Lane event will go ahead at a later date. This will no doubt be one of many opportunities available for us as a community to celebrate together again in the not-too-distant future. Until that time, please stay safe and look after one another."

Nelson City Council community engagement sessions



Events may be cancelled at COVID Alert Level 4. Dates and venues also subject to change.

Three Waters – Public Meetings

The Three Waters reform programme has the potential to significantly change the way critical water infrastructure and services are delivered in our city, so it is important that our community understands what the reforms involve.

To assist with this, we will be holding public meetings in September to explain what we know about the proposed reforms, what the result could be for Nelson, and what the next steps in the process will be.

When: Monday 6 September, 5:30pm – 7:30pm
Where: Trafalgar Centre, northern extension

When: Thursday 9 September, 5:30pm – 7:30pm
Where: Pūtangitangi/Greenmeadows Centre

For more information on the Three Waters reform go to threewaters.govt.nz and shape.nelson.govt.nz/three-waters-reform

Parking Strategy Drop-In sessions

We are developing a parking strategy to provide a framework for how we make our decisions. This helps us to maintain consistency and equity as we try and balance the competing needs for allocating road space.

Staff from our Transport team will be running some engagement sessions for businesses and community groups in Stoke and Tahunanui in September.

Stoke
When: Wednesday 1 September, 3pm to 6pm
Where: Pūtangitangi/Greenmeadows Centre

Tahunanui
When: Thursday 2 September, 3:30pm to 5:30pm
Where: Tahunanui Community Hub

For more information on the Parking Strategy go to

shape.nelson.govt.nz/developing-parking-strategy-nelson



MEETINGS

The following meetings of the Nelson City Council have been scheduled. Please note meetings are being held remotely while in COVID-19 Alert Levels 3 and 4.

Council meeting	26 Aug
9am	
Strategic Development and Property Subcommittee	
Deferred	TBC
Council meeting (previously Infrastructure Committee)	
9am	2 Sep
Nelson Tasman Regional Landfill Business Unit	
Deferred	TBC
Community Investment Funding Panel - Rūma Whakatū	
1pm	7 Sep
Environment and Climate Committee	
9am	9 Sep
Audit, Risk and Finance Subcommittee	
9am	14 Sep
Urban Development Subcommittee	
1pm	14 Sep
Hearings Panel - Other	
9am	15 Sep
Community and Recreation Committee	
9am	16 Sep
Chief Executive Employment Committee - Rūma Whakatū	
2pm	21 Sep
Council meeting	
9am	23 Sep
Regional Transport Committee	
1.30pm	28 Sep
Forestry Subcommittee	
1pm	29 Sep
Tenders Subcommittee	
9am	30 Sep

Changes to meetings

Nelson Regional Sewerage Business Unit, previously advertised to take place on 27 August 2021, at 9.30am, will now take place on Friday, 17 September 2021, at 2pm in Rūma Whakatū.

For a full list of meetings go to: nelson.govt.nz/meetings

To sign up for Our Nelson by email go to:



facebook.com/nelsoncitycouncil



A new way forward for affordable and social housing in Nelson

A proposal to sell Council-owned land to Kāinga Ora has the potential to create 175 affordable and social homes for Nelson.

Pending agreement at a full Council meeting on Thursday 26 August, Nelson City Council will consult the public on a proposal to sell Council-owned land in the city centre to Kāinga Ora to provide a potential 175 new homes in a high-quality affordable and social housing development.

The development, if it goes ahead, will be one of the largest mixed-use developments outside of Auckland, Wellington and Christchurch.

The consultation will seek the community's views on the sale of 69 to 101 Achilles Ave and 42 Rutherford Street.

Less than 50 per cent of the 175 properties will be social housing, with the remainder providing affordable housing.

The ground floor of the buildings will be set aside for commercial or community activities.

If, following community feedback, Council decides to sell the land, Kāinga Ora will then complete its due diligence process before it finalises the purchase of the property.

Nelson Mayor Rachel Reese said Council consulted on housing and intensification as a priority in the 2021-31 Long Term Plan.

This included a plan to partner with central government to support intensification and an increase in the supply of housing.

"Hundreds of submissions to our Long Term Plan 2021/31 supported housing as a priority and this is an important step toward achieving that goal."

Based on 2020 data, house prices in Nelson have risen 88 per cent in the past five years, and rents have increased by more than 30 per cent over that same timeframe.

The average Nelsonian spends about 38 per cent of their household income on their rent or their mortgage. That percentage is higher than the ratio of the income-to-housing costs in Auckland.

"The knock-on effect is that we are getting to a point where our businesses want to grow, but they can't attract skilled staff or even retain skilled staff in this region because of the cost and supply issues with housing.

"Kāinga Ora are well placed to provide the affordable housing Nelson requires and they are keen to partner with us.

"The economies of scale that they can bring to the table are important in an economy where construction costs are rising rapidly."

Kāinga Ora owns and manages about 1,620 state homes in the Nelson and Tasman areas.

Regional Director Kāinga Ora Julia Campbell said her organisation is committed to providing more homes of a variety of types in Nelson and across the region.

"Our partnership with Nelson City Council forms part of that work, and we're thrilled to be working with them to look at providing housing solutions that meet the needs of the community."

Should the sale go ahead, Campbell says Kāinga Ora would engage with local stakeholders and the community to keep them well-informed throughout the course of any development.

Specific designs and concepts would be created once the sale was approved, but "any development partnership between Kāinga Ora and the Nelson City Council will seek to provide features that enhance and give back to the community".

Mayor Reese said the proposed development would bring a lot of benefits to Nelson's city centre.

"By increasing the number of people who live in or close to our city centre, we not only ease the affordability crisis but also bring people closer to the services they regularly use and their workplace."

Council's preferred option is to sell the properties to Kāinga Ora at market value, with proceeds from the sale of the properties used to pay down debt.

However, the consultation also outlines other options, such as selling the land on the open market or retaining the land.

How to take part in the consultation:

The consultation will open on 30 August, 2021.

Visit shape.nelson.govt.nz/kainga-ora-consultation from 30 August to provide feedback. At Alert Level 2, hard copies of the consultation document will be available at Council's Customer Service Centre and public libraries. Consultation on Te Ara ō Whakatū will also open on 30 August, 2021.

Please note, the start date for these consultations may be dependent on the COVID-19 alert level. We will post updates on timing on the Shape Nelson website and our social media channels.





Te Ara ō Whakatū: Take part in our city centre's future

What do you get if you add 81 meetings with 275 attendees, 200 hours of discussion, and 247 cups of tea?

The answer is Te Ara ō Whakatū, Nelson's Draft City Centre Spatial Plan. Informed by community groups representing a wide variety of people in Nelson, the Plan is a 30-year vision for the future of our Smart Little City.

It comprises eight actions that will transform our city into an even greater people-focussed place, full of green spaces, where more people live, and visitors want to linger longer.

Pending a decision at a Council meeting on Thursday 26, August, further formal public consultation on Te Ara ō Whakatū will open on 30 August. This may change depending on the COVID-19 alert level.

Nelsonians will be able to read the plan and submit feedback at shape.nelson.govt.nz/city-centre-spatial-plan. If the COVID-19 alert level allows it, a summary of the Plan will also be delivered to every house in our region, and there will be copies available at our customer service centre, public libraries in Nelson and Stoke, bars, cafes, and retail outlets throughout the city centre.

If this is not possible to achieve copies of the summary will be available at Shape Nelson.

City Centre Development Lead Alan Gray says he is looking forward to hearing what the people of Nelson have to say about the Plan.

"What really came through in our engagement with community groups is a set of shared values. We all want to see our city become a destination; somewhere you visit not just for work or to see the pharmacist, but for a day out, or a special evening with friends."

Urban Development Subcommittee Chair Judene Edgar said the Plan was a chance for Nelson to stand out from the crowd.

"We want people to recognise Nelson as a welcoming, people-friendly city. Te Ara ō Whakatū builds on our heritage, culture, arts and existing facilities and infrastructure, to produce a blueprint for the future of our city."

Alan Gray and Judene Edgar on Te Ara ō Whakatū's eight actions:

Seeing Ourselves: "We should never underestimate Nelson's cultural identity. Our unique mix of independent retailers, restaurants, bars and cafes is one of the things that makes us stand out from the crowd – we should play to that strength." - JE

Raising Residents: "What if we raised the number of people who live in our city centre from 100 – 2000? This would cause a transformation for nightlife

for Nelson. Busier streets would mean our shops might find it worthwhile opening a bit later, greater opportunities for more hospitality businesses, and a sense that Nelson is still alive even after the sun sets." - AG

Streets for People: "Nelson needs to transform its city centre from a place where people drive in for work or shop, to one where they also live, socialise, relax and enjoy life. Imagine Hardy and Bridge Streets as a place where people stop and linger, while they enjoy a coffee or lunch." - JE

Great Places: "Great places are the social spots in Nelson's city centre where people meet, catch-up, and have fun. Places where people stay longer and enjoy the unique city experience Nelson offers. A growing worker and resident population will demand more social spaces offering greater appeal to people across a wide age range." - AG

Greener Streets: "Let's plant 1000 trees in our city centre and benefit from the natural shade and their beauty, not to mention the mental health benefits and the work they would do to sequester carbon emissions. With more people living centrally, our green streets will be many people's front gardens." - JE

Linked up laneways: "Laneways give people the opportunity to explore their city and see it from a new angle. They encourage people to explore and stay in the area, thereby benefitting local businesses and the community. The success and importance of laneways in modern urban environments is evident in forward thinking cities worldwide." - AG

Precinct Power: "Our city centre must have strong links to other nearby precincts. The students at NMIT, library users at the Riverside Precinct, knowledge workers at the new Sci-Tech Precinct. We need to make it easier for people to walk between these areas, so they choose not to use their car, and we also need to provide a city centre that these people want to visit." - JE

People at Play: "An urban park, yes. But not just an urban park. Our public life survey showed very little evidence of young children at play in our city centre. That has to change, and one way we can do that is with informal opportunities for play throughout the city. Our street furniture, our public art – both have the potential for playful interactions." - AG

Project Mahitahi Conservation Week heritage bus field-trip

The advertised Project Mahitahi Conservation Week field-trip, that was to take place on Sunday 5 September, has been postponed due to the uncertainty around COVID-19 Alert Levels.

The new date for this event has not been set, but will take place next summer. While not every week of the year can be Conservation Week (4 – 12 September), every week is worth celebrating our unique ecosystems and the conservation efforts of those involved in its protection. The trip will visit key sites within the catchment, and include a peek inside the workings of the Maitai Dam. If you are interested in being kept up to date with future events, including a revised date for the Project Mahitahi Field Trip, please email: project.mahitahi@ncc.govt.nz.





Nelson Arts Festival celebrates creativity

With 200 artists in 50 events across 11 days, Nelson Arts Festival is jam-packed with unmissable arts experiences.

The incredible 2021 programme features award-winning Red Leap Theatre's Owls Do Cry, physical theatre and circus performer Thom Monckton, Pasifika voices in Fua Creative's Matala, our popular literary programme Pukapuka Talks and the theatrical event of the year, The Haka Party Incident.

Music is in the air, including country with Tami Neilson, pop with The Beths, Taite Music Prize winner Reb Fountain, rap and dancehall with Rubi Du & PollyHill, synth-pop with KITA and the cool jazz of Lucien Johnson Quartet.

If cabaret is your thing, don't miss star Rutene Spooner's Thoroughly Modern Māui. Fancy some flamenco? Try Paul

Bosauder. Meanwhile over at The Boathouse, comedians James Roque and Pax Assadi will be cutting up a storm of laughs.

A festival highlight will surely be the daily art installation performances by the renowned dance/visual artist Charles Koroneho. All this and more, capped off with the world-famous Mask Carnivale – the best street party ever!

The Nelson Arts Festival takes place from 21-31 October 2021. The full programme is available at nelsonartsfestival.nz. Earlybird discount tickets are available until 31 August. This event is subject to COVID-19 Alert Levels.



Telling our stories with heritage panels

If you have a great idea for telling people about Nelson's heritage, Nelson City Council would like to hear it.

Applications for heritage story panel ideas that highlight sites of significance throughout Nelson are open now.

Previous successful panels have included those on Betsy Eyre, Appo Hooton and the history of the Italian migrants in The Wood.

All applications are assessed and those that present the best opportunity to share a heritage story with our community about a street or place will be selected.

The panel will be unveiled as part of next year's Tuku 22 Whakatū Heritage Festival. Applications are open now and close 24 September.

shape.nelson.govt.nz/nelson-heritage-story-panels-fund



Te Ara ō Whakatū — the designers who contributed unveiled

What will Nelson look like in 30 years? 50 years? 100 years?

What will future Nelsonians understand about us and what we valued? Will they see that we valued our people?

These are some of the questions the Nelson City Centre Spatial Plan (CCSP), gifted the name Te Ara ō Whakatū, hopes to answer.

The plan, which will go out for consultation on 30 August pending approval from Council and COVID-19 alert levels, sets out a people-focused vision of a city centre that would attract investment, residents, talent, thriving businesses, families, and events.

It was developed with input from a team of architects and urban designers, targeted feedback from a variety of individuals and community groups, and embraces Te Aranga Māori Design Principles.

Den Aitken, director of AitkenTaylor urban design and landscape architecture, says he wanted to build

on what Nelson already has.

"There is such a wonderful creative and artistic culture here, with great food, interesting art galleries, independent bookstores and shops, and an education hub through NMIT.

"We're blessed to be surrounded by so much natural beauty, but when we're not in those wonderful landscapes, there's no reason why the Monday to Friday, 9 to 5 urban experience can't be just as exciting.

"Our goal was to design spaces that would let people spend more time enjoying the wonderful things Nelson has to offer, to engage with one another and continue building on this unique community."

A key aspect of the plan to facilitate these human interactions would be a network of linked up laneways—narrow streets and alleyways enabling city blocks to be broken down to create small-scale connections across the city.

Keni-Duke Hetet of Waka Group Architecture and lead cultural designer for the plan shared his excitement around incorporating Māori culture and ways of thinking into the plan at different levels, especially the laneways.

"When you look at the laneways, infusing culture and artwork into the design will not only help beautify the city, but also represent mana whenua o Whakatū and whakapapa of local iwi, telling the story of the people who have lived here for a long time.



"Adding native trees to the streets and laneways to attract birds, and

connecting these laneways to our awa, the Maitai River, will also protect and enhance Te Taiao, the earth and natural environment, of which our urban landscape is a part.

"It was also important to think intergenerationally when developing the plan.

"Creating a more resilient, beautiful, and healthy environment not only benefits us now, but also ensures our children and our grandchildren are looked after."

At this stage, consultation is due to open on 30 August. Once open, head to the Shape Nelson website to view or make a submission on Te Ara ō Whakatū – Nelson City Centre Spatial Plan or request a copy from the Customer Service Centre or Library.

Submissions will close 24 September 2021.

shape.nelson.govt.nz/city-centre-spatial-plan



Infrastructure funding to increase housing supply

Nelson City Council is putting its best foot forward to secure government funding to increase housing supply in our region, by taking the lead in submitting four private developers' expressions of interest (EOI) to the Kāinga Ora administered Infrastructure Acceleration Fund (IAF).

The IAF is designed to allocate funding to new or upgraded infrastructure that unlocks housing development in the short to medium term and enables a meaningful contribution to housing outcomes in areas of need.

The EOI includes development proposals in Horoirangi, Maitai Valley, Marsden and Ngawhatu Valleys, and Bishopdale.

Mayor Rachel Reese said Council's vote of approval to include all four developments in its application, shows it is taking the issue of housing for the region seriously.

"Housing is an absolute top priority for this Council and for this community.

"It's important that we present the government with a clear opportunity to invest in our region, to address what is arguably the single biggest economic and social issue our region

is facing."

If the EOIs are successful, funding will enable developers to provide a greater variety of affordable housing options for buyers. However, applications to the Kāinga Ora-administered fund does not fetter any future Council decision making in relation to the proposals, including in its regulatory capacity.

Submissions of EOIs for the Infrastructure Acceleration Fund closed on 18 August.

Successful applicants at the EOI stage will progress to the second stage and receive a Request for Proposals (RFP), asking that they provide more detailed information.

If the proposals are successful, they will move to the negotiation stage, before the Minister's final funding decisions, expected in 2022.

Horoirangi

The Horoirangi proposal, led by Wakatū Incorporation, would provide an initial 200-250 homes with room for future development.

The development would be built on flat land extending from SH6 to the Boulder Bank near Nelson city and provide a range of housing options for people at all stages of life.



Maitahi

The Maitai Valley proposal, a partnership with Ngāti Koata and private developers, proposes to provide 350 homes, of which about 100 would be affordable.

This proposal is pending the outcome of a Private Plan Change that would rezone the area from rural to residential, which has yet to be decided.



Marsden Valley and Ngawhatu Valley

The Stoke development would see the construction of about 2,250 dwellings in Marsden Valley and Ngawhatu Valley and is the largest zoned area that can satisfy immediate and future demand.



Bishopdale

The Bishopdale development would provide over 100 homes, 60 per cent of which would be affordable and developed through a community housing provider.

The development site is five kilometres from central Nelson, with easy access to bus routes along

Waimea Road and cycle paths through the Railway Reserve.

Mayor Reese stressed the importance of Council collaborating with developers to address Nelson's shortage of affordable homes.

"There is no quick fix here; supply and intensification alone aren't going to be the only answers. What we also need is affordability."



Heritage building rates rebates

The heritage features of Nelson's privately-owned heritage homes are an important part of our history, but can be expensive to maintain for owners.

In recognition of the higher costs of looking after a heritage building, Nelson City Council offers rates remissions to owners of buildings listed as Group A or B heritage buildings in the Nelson Resource Management Plan.

Remissions of rates for heritage properties operate over a three-year cycle, with this year the first in the current cycle.

Owners of eligible heritage-listed properties will

receive a letter inviting them to apply for the rating year 1 July 2021 – 30 June 2022. All heritage property owners will need to reapply this year for the 2021 to 2023 cycle.

Applications for the heritage building rates remissions close at 5pm on Tuesday, 31 August 2021.

For more information, please see the Nelson City Council website:

nelson.govt.nz/property-ownership

Future changes to contact tracing

Scanning QR codes or manual contact tracing will soon be mandatory.

This will become effective seven days after any change in Alert Level settings that might allow more businesses to open or gatherings to go ahead.



Environmental Grant funding is now open

If you are a group or individual working to improve the health of Nelson Whakatū's natural environment, you may be eligible for funding support through the Nelson City Council Environmental Grants scheme.

Applications for the August 2021 funding round opened on Monday 2 August and close on Tuesday 7 September

Grant applications for less than \$5,000 have a higher chance of success, although funding of up to \$20,000 is available for selected projects in any one year.

Funding is limited so be sure to apply before the 7 September deadline.

Priorities for the August 2021 grants round are:

- Community projects* that protect and restore biodiversity by controlling weeds or browsing animals (e.g. goats, possums)
- Community projects* that enhance native wildlife through predator control

- Restoration projects (e.g. planting and weeding) on private properties larger than 1ha and where there is significant investment of time/resources from the landowners
- Projects that protect and restore Significant Natural Areas
- Projects that reduce erosion on farming and forestry land
- Projects that restore waterway margins

*Community projects are those that involve three or more landowners and/or involve public land.

If you can't make the 7 September deadline, the next round of Environmental Grant funding is in February 2022.

For more information go to the Nelson City Council website, email: nelson.nature@ncc.govt.nz or call us on 03 546 0200

nelson.govt.nz/environmental-grants-scheme

The model for New Zealand's public school system on display

A new permanent display showcasing the story of the Nelson School Society, which established some of Nelson Tasman's earliest schools, is opening at Founders Heritage Park.

Opening on 31 August, the display chronicles the efforts of Matthew Campbell, who helped establish multiple schools, known as Campbell's Schools, from Nelson through to Motupipi in Golden Bay.

The work of the Nelson School Society is credited with being the model for the free, compulsory public school system established throughout

the country in the New Zealand Education Act of 1877.

The display will allow visitors to look inside the old school desks and see what children used and played with when schools first began.

The display opening dates may be delayed depending on COVID-19 Alert Levels.

Trafalgar Centre waste plan exceeding expectations

More than 70 per cent of waste from events at the Trafalgar Centre has been diverted from landfill in six months, following the introduction of a new waste minimisation programme.

The centre's Waste Management Plan was developed and implemented by centre managers Community Leisure Management (CLM), in partnership with Nelson City Council's Rethink Waste team, with a goal of diverting a minimum of 50 per cent of event waste away from landfill.

Changes included new clauses for those hiring the centre, such as requirements for reusable or compostable tableware and glassware, along with active encouragement for visitors to bring reusable water bottles. Clearly marked banks of bins have been installed for recyclable plastics, glassware, compostable packaging, cans and rubbish/landfill.

A review of the outcomes from the Plan has shown from November 2020 – April 2021, an average of 74 per cent of waste from events was diverted away from landfill. The centre's biggest event, Bay Dreams 2021, recorded an impressive 79 per

cent waste diversion rate alone.

Trafalgar Centre Manager Mark Mekalick and Trafalgar Centre Events Co-ordinator Leah Parker attribute the success to good systems and clear communication. Venue users are given clear conditions of use, and through the development of strong relationships with waste service and compost providers, effective waste management systems have been implemented.

"There is still plenty to be done," says Mark, "But this is a great start – we're really looking forward to working with venue users to make even more improvements this year."

Council has released a new event waste minimisation plan and packaging guide to further support all event holders on the Nelson City Council website, and not-for-profit community event organisers can apply for a grant to assist them in reducing waste at their event.

nelson.govt.nz/reducing-waste-at-events

Laugh Nelson a night of fast-paced comedy

Nelson Tasman's budding comedians have a chance at the spotlight, as Laugh Nelson drags them centre stage, for a night of comedic hijinks.

Laugh Nelson is headlined by award-winning comedian and writer Andre King and features performances by improvised theatre sports teams from Garin College, Nayland College and Broadgreen Intermediate.

Garin College has two teams entered for the first time, and Broadgreen Intermediate's team is making their debut performance.

King, who has worked with comedians such as Lee Evans, Bill Bailey and Dave Chapelle, is a highly sought-after comedy writing and performance tutor. He will be passing on some of his knowledge to the theatre sports teams during pre-show training to further build on their skill.

Community and Recreation Committee Chair Tim Skinner says Laugh Nelson is an excellent opportunity for young people to try

out their comedic skills on stage.

"Theatre sports is no easy task, requiring quick-thinking, teamwork and a huge amount of creativity, with the added pressure of a live audience watching your every move. I encourage everyone to get along and support our young people as they bravely take on this challenge."

Laugh Nelson takes place on 24 September at the Suter Theatre, 7.30pm – 9.30pm and is suitable for intermediate aged children and up.

Tickets are for \$10 adults and \$5 students, available by searching "Laugh Nelson" on the Eventbrite website.

This event will not take place above COVID-19 Alert Level 1.



Learn a new skill at the Festival of Adult Learning - Ahurei Ākonga

Coding, Tai Chi, Cosplay, even an adventure race around the city – there is a range of activities just waiting to be tried as Nelson Public Libraries celebrate the Festival of Adult Learning.

From 6-11 September, the Elma Turner Library will host a range of classes, activities and workshops offering a wide variety of experiences, to expand your horizons.

The festival opens with a first – the library, in partnership with Age Concern, is hosting an inaugural Amazing Race, which will see teams solving clues throughout the city against the clock.

Starting at the library at 10am, teams or groups follow a map which explores some of the hidden gems around the city and solve clues along the way. Complete as much of the map as you wish before heading to the end destination for fun prizes, finger food and a cuppa to celebrate at 11am.

The Amazing Race is open to anyone looking to indulge in a bit of good-natured competition, while enjoying the beautiful city sights at the same time.

On Thursday 9 September, those interested in te reo Māori and/or yoga have a unique opportunity to combine the two in one. Move through gentle yoga poses, while learning the te reo names for each of the movements. Better still, if you find it's the activity for you, it runs every Thursday for the rest

of September, meaning more chances to practice.

For more information about these events, and more, go to the Nelson Public Libraries website. All events are held at the Elma Turner Library and bookings are required. Contact library@ncc.govt.nz, 03 546 8100 or ask one the librarians if you would like to book.

This event is subject to COVID-19 Alert Levels.

Join the Nelson Public Libraries from home

If you are not already a member of the library, you can join now from home and gain access to thousands of eBooks, audiobooks and magazines.

Visit the Nelson Public Libraries website and select 'Digital Only Membership' on the online form. Take note of your temporary membership number and four-digit PIN, as you will need this to sign-in to our online resources.

If you have any questions, or need a hand navigating our digital collections just get in touch and one of our friendly librarians will be happy to talk you through the process. You can contact the library staff at library@ncc.govt.nz or call 03 546 8100.



Councillor's Comment

By Councillor Gaile Noonan

"What's happening?" A common question from our community. At this time, a very good question. And the answer? There is a plethora of work happening right now. Much of it has been gifted to us from central government and some is locally driven.

Central government work in front of us right now includes the Three Waters Reform, a review of Local Government, the RMA reforms, urban development changes and a review of Civil Defence Management.

Locally, we are moving to a Ward system for voting, from the next election and also to a new voting method, Single Transferable Vote. Search 'representation review' at shape.nelson.govt.nz for more information about the new ward system.

Also, we have started discussing the library redevelopment and getting on with turning the decisions from our recent Long Term Plan into reality. We can relax a little, much of what we collect in rates is spent on infrastructure, something we know is important to the community.

Over the years we have skirted with the idea of amalgamation with Tasman. Is this the time we should begin to have those discussions?

Much of our work is already combined, sewerage and landfill come to mind, as does our public transport system. We have combined interests in the Port and Airport, Saxton field and the Nelson Provincial Museum. Looking at previous proposals for amalgamation, they have often been rushed. With something this important we need to hear the concerns of all and find some common ground to start this journey together.

We hear that we miss out on

bigger opportunities because we are two provincial areas – could we achieve more together?

It is interesting to note that many people don't know where the boundary between Nelson and Tasman actually is. While our boundary may be blurred, we feel as "one" in many ways and this shows abundantly in times of need like the fires in Tasman in recent years.

On another note – I recently watched a movie, The Lorax, based on the Dr. Seuss book published in 1971. This story is now 50 years old. Perhaps the showing of the movie was coincidental with this anniversary, or not. The anniversary certainly prompted a few opinion and news pieces around the world.

There is a moral to this story and that is, the decisions we make today are intergenerational, as well as for the now. That is something decision-makers must consider – and we do! The lorax ends with a kind of challenge.

"Unless someone like you cares a whole awful lot, nothing's going to get better. It's not." - The Lorax.



Councillor Gaile Noonan



Taiwan cherry: A pretty pest

Taiwan cherry (*Prunus campanulata*) is an invasive weed that poses a real threat to our environment.

Its seeds are easily spread by birds, and it can form dense stands in the landscape, preventing regeneration of native species that provide all-year-round food and habitat for our native fauna and insects.

It has become a major pest plant in Aotearoa New Zealand and has the potential to cause problems comparable with old man's beard, gorse and blackberry, if it is not brought under control.

Taiwan cherry is a deciduous tree that grows up to 10m in height. From late July through to early September, mature trees produce thousands of deep pink flowers that attract pollinators such as bees and tūi. Its leaves are 5-17cm long, staggered, serrated, and thin and it has shiny, scarlet fruit (1cm in diameter) from October to December.

Taiwan cherry in the Nelson area

Taiwan cherry was officially given eradication status in 2019, making it illegal to sell, propagate or distribute it in the Nelson Tasman region.

This species is a high biosecurity priority, and Nelson City Council is offering free removal if you have this tree on your property. Council contractors will be contacting landowners with known trees, over the coming weeks, to arrange tree removal.

What can you do?

Council is asking for the support and cooperation of the local community, to achieve its goal of Taiwan cherry eradication, and we urge anyone who suspects they have it growing on their property to get in touch to arrange for the tree/s to be assessed.

It is important for the public to notify Council of sites where Taiwan cherry is growing, or has been planted in the past, as seedlings may have spread to neighbouring properties and reserves.

We appreciate that these trees are attractive and that they draw in birds and bees, but these benefits are far outweighed by the disastrous ecological impacts this species will have on our indigenous scrubland and forest ecosystems if left to spread. We recommend replanting with native species such as kōwhai, rātā or tī kōuka (cabbage trees) to benefit the local bird and insect population.

To report Taiwan cherry, or to arrange an assessment:
(Please note: assessments may be delayed due to COVID-19 Alert Levels)

Contact Nelmac directly on 0800 635 622, email us on nelson.nature@ncc.govt.nz or call Nelson City Council on 03 546 0200. Go to our website for more information



nelson.govt.nz/taiwan-cherry

Due to the uncertainty around COVID-19 alert levels please ensure you check itson.co.nz regularly for event updates.

WHAT'S ON... at a Council venue near you



Kirby Lane

Nelson Farmers Market. Every Wednesday 8.30am – 1.30pm
Kirby Fridays: Lunch Edition. Every Friday 11.30 – 2.30pm
4 Lanes Festival, Saturday 28 August, 3.00pm – 9.00pm

Trafalgar Centre

Fat Freddy's Drop, Thursday 16 September, 8:00pm

Founders Heritage Park

100% DnB Feat THE UPBEATS, TREI + JABZ MC & OPTIMUS GRYPE, Friday 10 September, 6:00pm – 11:00pm
Nelson Parent and Child Expo, Sunday 12 September, 10am -3pm

Nelson Public Libraries:

Elma Turner Library

Hours:
Monday, Tuesday, Thursday, Friday: 9:30am — 6:00pm
Wednesday: 10:00am – 6:00pm
Saturday: 10:00am — 4:00pm
Sunday: 1:00pm — 4:00pm
Philosophy Discussion Group, meets every second Monday of the month, 10.00am – 11.00am
Back to the Future - Tech Taster Sessions, every Monday 2pm
Workbridge drop-in sessions, every Monday 9.30am & Wednesday 10:00am
STEM Drop-in, every Monday, 3.30pm – 4.30pm
Small Time at the Elma Turner Library, every Wednesday 10:30am
Young Adult Reading Club, every Wednesday 3.45pm
STEM writers, every second and fourth Tuesday of the month 1:00pm – 3:00pm
Junior Reading Club, every Tuesday 3.30pm

Library Knitters, every Thursday, 10:00am – 12:00pm
Media Club, Every Wednesday, 3.30pm – 4.30pm
Sewing Classes with Robyn Reynolds, every Thursday. 3:00pm – 5:00pm
Tea & Talk, every Friday 10:00am
Justices of the Peace, every Saturday 10:00am – 12:00pm
Employable drop-in sessions, every second Friday, 10:30am – 12:30pm
Ode to the Dictionary, August 23 – 27 2021
Poetry and Place, August 23 – 27 2021
Sewing Club 4-week course, Wednesday 25 August, 3.30pm – 5.00pm
Brain Injury Association – Drop-in Session, Thursday 26 August, 10.00am – 12.00pm
Open Mic Poetry Day, Friday 27 August, 12.00pm -1.00pm
Poetry for life with Cliff Fell, Friday 27 August, 1.00pm – 2.30pm
Picnic in the Library – Book Launch, Saturday 28 August, 12.00pm – 1.00pm
Live Music – Guitar Orchestra, Sunday 29 August, 2.00pm – 3.00pm
Learn the Library – ebooks and audiobooks, Thursday 2 September, 9.30am - 11.00am
Te Reo Māori Yoga Class, every Thursday from 2 September, 11.00am – 12.00pm
Nelson Institute Talk – Daniel Wilson, Sunday 5 September, 2.00pm – 3.00pm
Women's Wellbeing: Within your centre – Importance of a healthy pelvic floor, Monday 6 September, 4.30pm – 5.30pm
Home Educators – NZSL, Tuesday 7 September, 11.00am – 12.00pm
Virtual reality drop-in, Wednesday 8 September, 11.30am – 2.00pm
Te Wiki o Te Reo – Introduction to Te Reo Māori, Thursday 9 September, 9.30am – 11.00am
Brain Injury Association – Drop-in Session, Thursday 9 September, 10.00am – 12.00pm

Coding for Newbies, Thursday 9 September, 12.00pm – 1.00pm
Introduction to Tai Chi, Friday 10 September, 12.00pm – 12.45pm
Geeky Stitches, Friday 10 September, 1.00pm – 3.00pm
Baby Massage, Saturday 11 September, 10.00am – 11.00am
Cosplay workshop: Builder: Build a bracer, Saturday 11 September, 1.00pm – 2.30pm
Introduction to Te Reo Māori, Monday 13 September, 12.00pm – 1.30pm
Bookchat, Tuesday 14 September, 10.30am – 11.30am
Te Wiki o Te Reo – Introduction to Te Reo Māori, Monday 13 and Wednesday 15 September, 12.00pm – 1.30pm
Learn at the Library – Online Safety, Thursday 16 September, 9.30am – 11.00am
Te Wiki o Te Reo with David Karena-Holmes, Saturday 18 September, 2.00pm – 3.00pm
Friends of the Library- Brook Sanctuary talk, Sunday 19 September, 2.00pm – 3.00pm
Home Educators – Lego Robotics, Tuesday 21 September, 11.30am – 12.30pm
Story Time, Tuesdays 10.30am

Nightingale Library Memorial.

Hours:
Monday, Wednesday, Friday: 1:00pm – 4:30pm
Tuesday, Thursday: 10:00am – 2:00pm
Saturday: Closed
Sunday: 10:00am — 2:00pm
Nellie Knitters. Every Monday 1.30 – 3.30pm
Story Time at the Tahunanui Library. Every Thursday. 10.30am – 11:00am
Device Advice at Nightingale. Every Friday at 2pm
Tea & Tales – Dementia Friendly Book Group, every Wednesday, 11.30am – 12.30pm

Stoke Library

Hours:
Monday, Tuesday, Thursday, Friday: 9:30am — 5:30pm
Wednesday: 10:00am – 5:30pm
Saturday: 10:00am — 1:00pm
Sunday: Closed
Stoke Craft Club. Every Monday 3:30pm – 4:30pm
Small time at the Stoke Library. Every Tuesday 10.30am – 11.00am
Story Time at the Stoke Library. Every Wednesday 10:30am
Device Advice at Stoke Library. Every Tuesday & Wednesday at 2pm
Stoke Library Bookchat. Every third Wednesday of the month 5.30pm – 6.30pm
Stoke Library: Poetry Shared Reading, Friday 27 August, 2.00pm – 3.00pm

Museums and Galleries:

The Suter Art Gallery & Theatre

Hours: 9.30am – 4.30pm Daily
Light Dwells, Saturday 29 May – Sunday 29 August
Chroma, Saturday 19 June – Wednesday 15 September
Hannah Beehre: Pillars, Tuesday June 22 – Sunday 29 August
Wonderland Glow Show, Tuesday 7 September, 10:00am – 1:00pm
TEDx Nelson, Saturday 18 September, 9.00am – 5.00pm

Refinery ArtSpace

Hours: 10am – 5pm, Monday to Friday & 10am – 2pm, Saturday

Nelson Provincial Museum

Hours: 10 – 5pm Weekdays, 10am – 4.30pm Weekends & Public Holidays