



Living in harmony: submit on the Urban Environment bylaw review

Nelson City Council has reviewed its Urban Environments Bylaw 2015 (No.225) as part of a regular review process designed to make sure it is still fit for purpose, serving the community and keeping up with change.

The Urban Environments Bylaw covers a lot of the things that help us to live alongside each other harmoniously, such as the keeping of animals, management of public health, safety and nuisance, trading in public places, control of alcohol in public places, management of reserves, and cremations.

A substantial review of the Urban Environments Bylaw occurred in 2015, and only a small range of issues have arisen since that time. Consequently, most of the current Bylaw is proposed to remain the same, and there are a handful of proposed tweaks and minor wording changes that aim to simplify processes and make the Bylaw more legally robust.

A more significant change to the current Bylaw is the removal of permission to play or practise golf in Neale Park, and changes to the bylaws around trading in public places.

Golf in Neale Park has caused public safety concerns from neighbouring residents and park users, including some very near miss incidents involving golf balls landing too close to young children. It is therefore proposed that Neale Park is no longer designated as an area where golf is allowed.

Another change is that retailers will no longer be required to obtain a permit before setting up a retail display on the footpath, and instead, the amended Bylaw will rule that retail displays cannot be a hazard to pedestrians or reduce the width of the footpath available to pedestrians to less than 1.5 metres. Likewise, sandwich boards will need to be placed so that there is at least 1.5m clearance on footpaths for pedestrians.

Other Bylaw changes are being made to avoid double-up with other local government acts and legislations, including how Council sets fees, which is proposed to be managed under the Local Government Act.

Group Manager Environmental Management Clare Barton says the review ensures the Bylaw keeps pace with our community and its changing needs.

"The proposed changes reflect feedback that we've already had from our community about concerns they have. For example, we know that people being hit by golf balls has led to people no longer feeling safe to use Neale Park for monthly kite-flying days, and that's why we are proposing stopping golf at the park. Now we want to hear whether this is a change that people welcome."

Council is seeking the public's views on the proposed changes and the draft Bylaw until Wednesday 8 December 2021.

Anyone can make a submission supporting or opposing any of the suggested changes. The public is also welcome to have a look at the whole Bylaw (available on Nelson City Council's Shape Nelson website, or at Council's Customer Service Centre and Nelson's public libraries) and tell Council what you think of the changes, or what else should change.

Submissions can be made:

Online: shape.nelson.govt.nz/nelson-urban-environments-bylaw

Email: submissions@ncc.govt.nz

Post: Nelson City Council, PO Box 645, Nelson 7040

Dropbox: Customer Service Centre, 110 Trafalgar Street, Nelson.

Submissions must be received no later than 5pm Wednesday 8 December 2021.

Any person who wishes to speak in support of their submission will be given the opportunity to address Council at a hearing in early 2022.

A solid foundation: subdivision resource consent increase points to future housing supply increase

Resource consents for subdivisions in Nelson are up by 15%, an encouraging sign for future increases in housing supply, and a sign that Nelson's traditionally steady housing market is starting to change.

Housing, affordability and intensification were priorities in the 2021-31 Long Term Plan, which also included a \$496m infrastructure budget targeted for the most part towards projects that can increase housing capacity.

Urban Development Subcommittee Chair Judene Edgar says that although there are multiple market dynamics, such as the price of building materials and availability of skilled labour, that are out of Council's direct control, that doesn't mean Council cannot be proactive in supporting an increase in Nelson's housing supply.

"We are feeling very optimistic about the impact we are now starting to have. Increases in resource consents for subdivisions are the green shoots of the recovery. These applications are an early stage of the process, but they do indicate that more homes will come on the market.

"We shouldn't forget that even with close analysis of the data we have available, there are still people who can fall through the cracks. There is likely more unmet demand than the statistics show, so we need to be doing everything we can to enable more affordable housing.

"There are many ways Council can help. We want to help remove bottlenecks for development, particularly for intensification."

Some of the Council-led housing initiatives that are underway include:

- A focus on developing partnerships and using our own land wisely to increase housing supply, such as the recent decision to sell land to Kāinga Ora to provide up to 175 social and affordable homes in Nelson's city centre. The sale of Nelson's community housing reserve last year, creating a \$12m housing reserve fund that will be used to increase housing supply further. \$2m of this fund will be released this year, in order to assist affordable housing projects that are ready to go.
- Making developing land more streamlined and cost-effective. This includes waiving development contributions for city-centre development and establishing a navigator role to assist developers with Council processes.
- Supporting four expressions of interest applications to the Infrastructure Acceleration Fund that have proceeded to the Request for Proposal stage. If successful, this funding will help housing development proposals in Achilles Ave and Rutherford St, Marsden Valley/Ngawhatu Valley, Maitahi Village and Horoirangi Phase one, to progress. Each of these developments carries the potential for hundreds, and in the case of the Marsden Valley/Ngawhatu Valley development, thousands of new homes to be built.

Housing supply in both Nelson and Tasman has historically not kept up with demand since about 2015, but the gap is narrowing, and there is now an annual shortfall of about 100 homes across Nelson and Tasman.

"We did see a decrease in building consents after the first COVID-19 lockdown, that had an impact on confidence in the market," says Councillor Edgar. "But traditionally, Nelson is very stable in terms of consent numbers.

"Sections within subdivisions have previously taken time to sell once they are released to the market, but this hasn't been the case in recent years. Sections are now presold prior to them receiving title. If an increased land supply is available in Nelson, this will inevitably result in more residential dwellings being consented."

To read the full National Policy Statement on Urban Development, Nelson-Tasman Joint Monitoring Report, June 2021 please visit:

bit.ly/3ES67hM

New link road and car park for Saxton Field

There is now improved access to the Velodrome and Saxton Field from Champion Drive, thanks to a new link road and car parking facilities.

The project was divided into two stages, with work done initially to connect Champion Road to the Velodrome in 2019, before linking the Velodrome to Saxton Field. The project was completed in April this year, on time and on budget.

The carpark was specially designed to cater for cycling events and speed skating. This included non-slip line marking, high-quality asphalt and specially positioned gates to fully enclose the carpark for events. A mid-point lockable gate was also installed to improve day-to-day safety and allow this link to open for large events.

Deputy Mayor Judene Edgar said the new road and car park makes the Velodrome and other facilities of Saxton Field more accessible.

"The Velodrome is not just for professional cyclists, it's a community facility open to all skill levels. The fun learn-to-ride area, complete with roundabout, intersections and road signs is a great place to take the kids and now walkers, cyclists and drivers have safer and easier access."



What does it take to make a car park:

- Over 6000m² of Asphalt
- Over 1.5km of line marking
- More than 4,000 tonnes of earth moved
- Over 1.4km of kerb and channel

Youth councillors share their vision of future development

"Dear younger me. It's 2050. A lot has changed...."

Ideas for our region's growth were shared by those who will experience it the most in the years ahead, as Youth Council members from around the top of the south took part in workshops on the Nelson Tasman Future Development Strategy (FDS).

Representatives from Nelson Whakatū and around Tasman took part in briefings and workshop events last month, creating a vision to help inform the overarching outcomes and direction of our FDS, alongside feedback from key stakeholders, the community and Councillors.

Key themes and feedback that emerged included:

- Importance of public spaces and amenities, particularly for youth
- Public transport, particularly bus services
- Protection of the natural environment
- Sustainability measures including waste reduction, renewable energy, bioproducts
- Density within centres
- Balancing between growth and maintaining the small village feel of townships
- Housing affordability and choice

The workshops included a postcard activity where youth councillors wrote their future selves a vision of what their town's development will look like in 30 years' time.

The FDS is a joint project between Nelson City Council and Tasman District Council and sets out where and how residential and business growth within Nelson and Tasman will occur over the next 30 years.

Following our online engagement period, which included several webinars, we are now drafting the new FDS which will be publicly notified in March 2022.

For further details email us at futuredevelopmentstrategy@ncc.govt.nz or go to the Shape Nelson website:



shape.nelson.govt.nz/future-development-strategy

Mayor's Message

It turns out the renowned Chinese curse "may you live in interesting times" probably didn't have its origins in China, but none the less there is no denying that our current environment is not only "interesting" but also very challenging for our whole region.

And a key task for Nelson in this environment is how we as a community address the many issues that we face.

As a region, we have a good track record of working together in tough times and emergencies and we can cite the community reaction to the Pigeon Valley fires and a range of local initiatives to support environmental projects and endeavours to support the refugee community alongside the good work undertaken by the Nelson Community Foodbank.

Responding as a community is often more straight forward when there is a specific task or emergency to be addressed than when complex issues have to be debated and a consensus needs to be developed to allow us to progress as a group.

Many of the topics currently up for discussion will involve interaction with every part of the community, including Iwi, community and volunteer groups, lobby organisations and business.

It is important at times such as these that we engage in discussions and debate in a respectful and tolerant manner to ensure all voices and points of view are heard and we as a community can develop a common ground to move forward.

Where topics are contentious, we need to follow basic ground rules to help understand different perspectives, including providing space for other people to speak and listening to their point of view, focusing on the issues and not making the discussion personal.

We need to be honest and open in our discussions and address the topic at hand without feeling a need to get everything off our chest at once.

Keeping name calling and stereotyping out of the discussion allows people to feel safe and able to clearly articulate their opinions. It's important to remember that even when we disagree, we are all part of a community that needs to function going into the future and has to continue to work together. Everyone has their own perspective and brings their singular personal history to the table.

A strong test of how we function as a community looms with the introduction of the new Covid-19 rules as well as the likely occurrence of Covid-19 cases in our community. We'll need to work together and demonstrate patience and tolerance, especially as levels of anxiety rise and we face the challenge of needing to go about our daily routines safely while protecting those who are vulnerable.

I'm very comfortable that we as a community are up to this challenge.

Ngā mihi



Eureka Park mini table for little visitors – donated by The Eureka Sister City Group

Following the installation of the popular redwood picnic table at Eureka Park a year ago, a duplicate, mini version has been added alongside it, thanks to the generous support of the Eureka Sister City Group.

This is a wonderful reserve for children to explore the redwood forest, and the additional new table will make forest birthday parties a real treat. This new furniture in the park was crafted by a local woodworker, largely from materials found on site.



Have pet, will travel: trial allowing pets on the Nbus begins

Starting on 1 December, Nbus passengers will be able to ride with small domestic pets in appropriate animal containers during off-peak times.

The decision was made at a Regional Transport Committee meeting on 28 September in response to feedback on the recent draft Regional Public Transport Plan and requests from the community received over the years.

Regional Transport Chair Brian McGurk said the trial is just another piece of the puzzle to make public transport a more attractive and convenient option for people.

"If we want to encourage a modal shift in Nelson, we need to address the barriers that might discourage someone from riding the bus, car-pooling, or cycling.

"This trial will allow people who do not have or need a car to take their small pet to the vet for a check-up, or simply enjoy the companionship their pet provides in new parts of town – at Tāhunanui Back Beach for a swim or a walk together along one of our many trails.

"And hopefully, with this fantastic initiative, more people will opt for the ease and convenience of the bus rather than a car."

Until this decision, Nelson Tasman was like many public transport authorities around the country which only allowed disability assist dogs on buses.

This trend is now changing, with many councils considering relaxing pet travel bans. Auckland Transport allows pets in suitable carriers to ride the train, and Greater Wellington Regional Council (GW), Hawkes Bay, Dunedin and Queenstown allow for pets to be carried on buses in approved carriers.

Nelson's trial will follow the model established by GW.

The trial will begin 1 December and run for approximately 12 months. The proposed conditions of the trial are:

- Domestic pets are allowed to travel on Nbus vehicles as long as they are enclosed in a suitable pet carrier. The pet carrier must be stored securely in the available space for luggage or on the passenger's lap.
- Passengers travelling with domestic pets are responsible for their and other passengers' safety. Pets must be kept under control while on Nelson City Council or Nbus operator premises, and when getting on or off or travelling on Nbus vehicles.
- A person may be refused entry to board a vehicle or asked to leave the vehicle with their domestic pet if the vehicle is crowded; or, if in staff's opinion, the animal is causing or likely to cause a safety risk or nuisance to other customers.
- Passengers travelling with domestic pets must travel during off-peak periods only.
- No additional fare for pets will be charged.



Rose Sunday celebration popular at Broadgreen Historic House

Nelsonians turned out to enjoy the beautiful flowers on display at @Rose Sunday: A Celebration of Roses at @Broadgreen Historic House on Sunday 14 November.

Members of the Nelson Districts Rose Society, Heritage Roses, and Nelson Orchid Society showcased their finest roses and orchid displays, including heritage roses which can be traced back to when they were first brought to New Zealand by European immigrants.

Thanks to everyone that came along to enjoy the occasion, a picnic lunch and some fresh air wandering in the Samuels Rose Gardens.

Broadgreen Historic House was also open for visitors to explore.



Councillor's Comment

Seeking intelligent, thoughtful, courageous representatives

In 2018 my partner, Scott, and I sold the company we'd founded almost 20 years earlier, which worked globally with young adults on leadership, sustainability and community development initiatives. Acknowledging the significant challenges facing us all, including inequity, climate change and biodiversity collapse, we both felt it was time to turn our global focus to local action.

I had always been interested in business and politics improving community outcomes. I thought local government might be a way I could put my skills and passion to best use – serving our community and supporting the transformational changes needed to ensure a future where our children and grandchildren can thrive, not just survive. I am very aware of the privilege and responsibility I now hold, having a seat around this particular decision-making table for this triennium.

My understanding of the scope and breadth of local government responsibility, influence and impact has grown exponentially. Responsibilities which include management of large infrastructure, governance, land-use planning, environmental impact assessment, economic modelling, financial management, and engagement with diverse communities. I've also realised that to be relevant and responsive to 21st century challenges, local government needs its own kind of transformation, structurally and representationally.

The Future for Local

Government review has just released its interim report. It's a compelling and hopeful read and I urge you to check it out (futureforlocalgovernment.govt.nz). It talks about the need to: embrace genuine Te Tiriti partnership; prioritise wellbeing for all (including future generations); address environmental degradation; embody open and respectful relationships; and be fair, inclusive, transparent, accountable and agile.

My encouragement to you is, consider the kinds of people, and the qualities needed, to lead our community towards a sustainable future and encourage them (or back yourself) to run for local government. Elections are in October 2022. It's not too early to start – I spent a year preparing to run for the role: researching, upskilling, connecting, and campaigning. There's lots of useful information here, taituara.org.nz/local-elections-2022 and lgnz.co.nz/local-government-in-nz.

If you have questions about what the role entails, you are welcome to contact me, or another elected representative of your choice: nelson.govt.nz/council/mayor-councillors



Councillor Rachel Sanson

Isel House opening, volunteers hosts needed

Isel House is opening for the summer season and Nelson City Council is looking for heritage hosts to greet visitors and share the house's history.

Isel House opens from Tuesday, 16 November, and is open Tuesday-Saturday, 10am – 3pm until April.

Volunteers are essential to running the house, and more hosts are needed to help with the upcoming season.

Hosting at Isel House is the perfect activity for those who enjoy history and meeting people. The available shifts are on weekends, either morning 11am-1.30pm or afternoon 1.30pm-4pm, and during the Isel Market, which takes place on Thursdays from 5pm-7.30pm. Additional volunteers will allow the house to open on Sundays and market days.

Anyone interested in volunteering is asked to contact Māhina Marshall on 022 546 0240 or email: Mahina.Marshall@ncc.govt.nz.

Three waters reforms to proceed

At the end of October, the Government confirmed it will create four publicly-owned water entities to manage New Zealand's drinking water, wastewater and stormwater networks (known as the "Three waters").

This means that the water services currently looked after by 67 local councils will merge into these four entities by July 2024.

Councils throughout New Zealand raised a variety of concerns about these reforms, including Nelson. To address some of these issues, the Government has established three working groups that will look at refining parts of the reform that have caused concern. The focus areas of these working groups are:

- Representation, governance and accountability

- Planning Technical Advisory

- Rural Supplies Technical Advisory

Nelson Mayor Rachel Reese has been appointed to be on the governance/accountability working group.

A key area that was raised by Nelsonians and Council was the lack of public engagement on the reforms. The Government is due to introduce the Water Services Entities Bill in December and we are waiting to see the Bill and the detail of the timeline for consultation.

The next steps in the process are expected to be as follows:

Early December: Water Services Entities Bill introduced to Parliament.

Mid December: First reading of the Bill and referral to Select Committee: call for public submissions.

Early 2022: Public consultation on Water Services Entities Bill through Select Committee process; National Transition Unit engagement with local authorities begins.

June 2022: Report back on Water Services Entities Bill.

July 2022: \$500 million in 'better-off' funding available for councils.

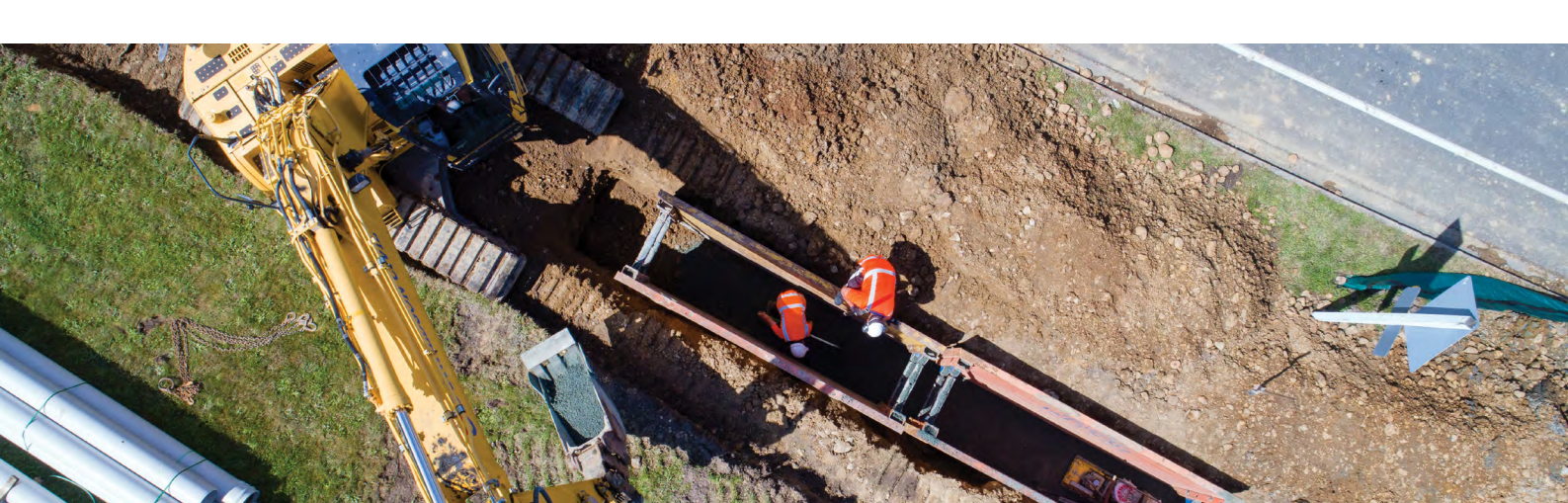
July 2024: Four new entities take responsibility for delivering water services; up to \$2 billion additional funding available for councils.

Further information:

For more information visit dia.govt.nz/Three-Waters-Reform-Programme.

To read Nelson City Council's feedback, visit shape.nelson.govt.nz/three-waters-reform

Mayor Rachel Reese's response: bit.ly/3okJQm0





Volunteers wanted for an exciting new citizen science project!

Come along to help us plant teabags for an estuarine decomposition experiment that looks at carbon sequestration. It will be muddy, but fun!

We need 20 volunteers on Tuesday 30 November at The Haven from 11.30am and 16 volunteers on Wednesday 1 December at Waimea Inlet from 12.30pm

What is it for?

Nelson City Council scientists are looking at our local estuarine health and carbon sequestration potential, as well as contributing to a global study to gather information about how soils around the world sequester carbon. The study involves analysis of litter decomposition within wetland ecosystems using household teabags, a novel, but scientific technique for measuring carbon decomposition at low cost.

Currently, there are nearly 20,000 teabags deployed in more than 300 sites in 30 countries around the world!

Teabags of two very specific types are used to represent natural plant litter – exactly the same two types of Lipton teabags are used by all of the sites globally to ensure the starting point is the same in each experiment. The teabags are planted in different soil types, so in an estuary setting like the Nelson Haven and Waimea Inlet, it will be in seagrass, saltmarsh and mud.

The teabags are left for three months after which they are dug back up again (and, yes, you guessed it we will need help with that as well around March, but will organise that later).

Tea bags are weighed before burial, and then again after retrieval and drying. Decomposition can then be calculated. Little-to-no decomposition indicates carbon sequestration in the seabed.

This information will help us locally when we undertake saltmarsh and/or seagrass enhancement projects, by identifying areas where there may be increased blue carbon sequestration occurring. This means we can enhance our estuarine ecosystems while doing our bit for climate change at the same time by sequestering carbon. If the seabed is left undisturbed this carbon can remain sequestered for millennia.

More detailed information about the logistics of taking part will be provided to those who are interested in participating.

If you are interested in either of the planting days, and/or for the March retrieval, or would just like more information, contact Vikki, NCC's Coastal & Marine Scientist at vikki.ambrose@ncc.govt.nz

Governance group established for new library

Nelson City Councillors Rohan O'Neill-Stevens and Brian McGurk will join Mayor Reese and Deputy Mayor Edgar alongside Nelson City Council managers Andrew White and Alec Louverdis as members of the newly-established Governance Reference Group (GRG) that will provide feedback on issues and opportunities relating to the new library project.

The GRG will also be joined by an Iwi representative.

Mayor Reese said solidifying the GRG was an important step to provide confidence in the project management of the library project.

"This project involves a complex set of discussions around land and resources with a number of affected parties with different governance and decision-making structures.

"Having a project management and governance structure in place to guide decision-making will ensure the high expectation that Council and the community have for this library are met."

Besides reviewing information relevant to the project, the GRG will participate in community engagement processes and provide an interface and sounding board between full Council and officers to support the presentation of information to Council.

Chorus cabinet art winners chosen

Nelson's lush landscape, the ocean, and a family of fungi will feature on four of Nelson's Chorus cabinets as the final designs from the latest round of the Chorus Art Cabinet mural submissions are chosen.

Arts Council Nelson ran the competition to find four winning designs to transform two medium and two small Chorus cabinets into works of art on behalf of Nelson City Council and Chorus.

The winning designs, reviewed by Council's Arts Selection Panel, belong to Samara Davis, Jasmine McLean and Amber Sisarich.

The cabinets chosen to receive a makeover are on the corner of Atawhai Dr and Paremata St, on Main Rd Stoke and two on Tahunanui Dr.

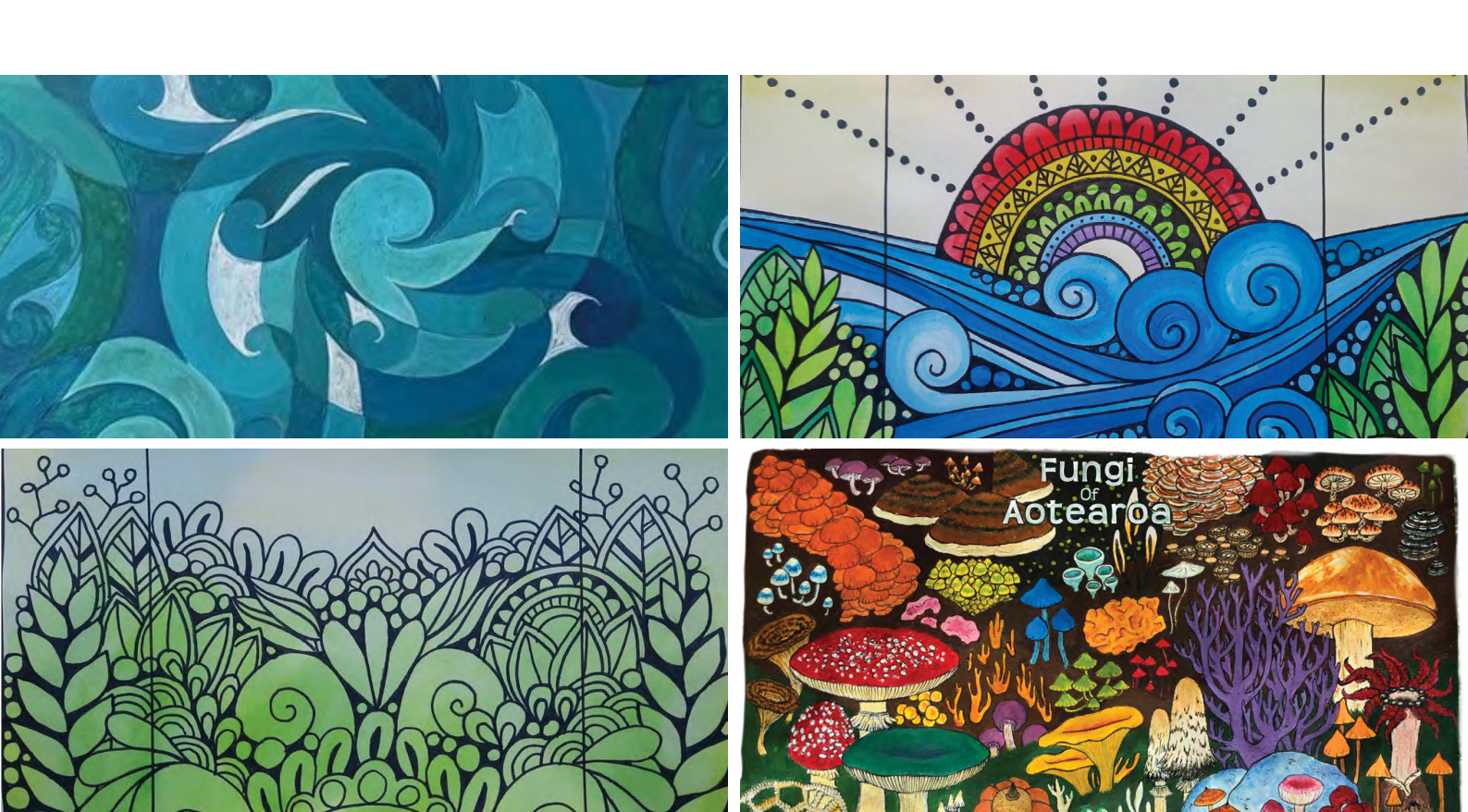
Samara's mural is destined for the cabinet on the corner of Atawhai Dr/ Paremata St, which had a design brief of embracing the Māori meaning of the word Atawhai – "to show kindness" or "to foster".

Her design, called Ko Wai Ahau, uses kowhaiwhai to express the flow of water. Her design is a response to climate change, rising sea levels and water pollution, areas where the notion of "showing kindness" are key, she says.

Jasmine McLean's work will adorn two Chorus cabinets on Tahunanui Drive. Both designs, Shine Bright and Electric Fauna, reflect the beauty of Nelson's native environment, and one includes a rainbow to show togetherness and acceptance.

Amber Sisarich's design, Fungi of Aotearoa, explores the mysterious world of mushrooms and fungi. The fascinating and diverse world of fungi is often overlooked, says Amber, and her design aims to give them some time in the limelight.

Work on the boxes will begin as soon as the artists are ready.





Pūtangitangi Greenmeadows keeping its waste footprint light

Pūtangitangi Greenmeadows Community Centre is a great resource for the Stoke community, providing a place to meet and hosting a whole range of activities. As a Council facility, it's important it walks the talk on how we use resources and avoid waste.

The centre team has been working with Rethink Waste|Whakaarohia to set up a plan to do just this. We caught up with Centre Manager Gareth Cashin and Administration Assistant Karen Scott to find out what's changed.

We know you've been working hard on a plan to make it easy for everyone to reduce waste – tell us a bit about it?

Gareth: We're lucky to have a modern facility already well set up with a commercial kitchen facility and plenty of reusable catering ware, so it was an easy step to move to a reusable approach. For our community users hiring rooms, this means that we ask them to use the plates, cutlery etc, already provided, rather than single-use items that have to be thrown away if they can't be recycled.

Karen: We were keen to get on board – there's a need for all of us to be better guardians. We looked not only at how users can reduce waste but also how we run the centre. That means practical actions such as reusing paper and getting our bathroom handtowels composted, as well as how the facility is used by the public.

Gareth: Our centre wants to reduce its environmental impact as much as possible, so it was really good to work with the Rethink Waste team setting up a plan with clear actions and next steps. We already had some good systems in place, and the on-site cafe has been a great champion, working on local farmer solutions for food scraps that are now in place for events as well as the cafe and encouraging reusable cups by offering a discount. Our regular users, such as Stoke Seniors, are also great at leading the way.

What else do you see as important?

Karen: It's not just about our systems; it's also about making avoiding waste fun. The centre recently hosted a Fix-It Saturday repair cafe, and the buzz of happy people bringing in items for volunteers to use their skills to fix is a great example. It's a great way to bring community and environment together.

Gareth: It's important to take this as a step by step process and learn as we go. We're here to help our community and we always want to hear ideas and suggestions. It's also important to measure the change we're making and tell the story – we hope that others will be inspired to do the same.

To find out more or if you would like help with waste minimisation, email rethinkwaste@ncc.govt.nz.

Buy your firewood before Xmas to beat the rush and save!

Nelson City Council in partnership with Good Wood suppliers is offering a limited number of firewood discounts to Nelson residents who buy their wood in November and December, ahead of next year's winter rush.

Nelson residents are eligible for a \$25 discount off the price of one load of firewood per household (minimum load size 3m3 to qualify).

The promotion runs until 23 December 2021, or until fully allocated.

Good Wood suppliers are committed to supply either:

Dry, seasoned firewood, suitable for immediate use and can be stored away immediately. This is wood that has a moisture content of less than 25% dry weight.

OR

Green (unseasoned) firewood delivered sufficiently far in advance of winter so that, if properly stored by the user, the wood will be seasoned for use for the following winter. You will need to allow this wood to season (dry) properly before storing away.

When discussing your firewood requirements with your Good Wood supplier make it clear whether you are happy to receive green wood to dry over summer, or if you prefer seasoned wood that you are planning to store away immediately.

Good Wood suppliers taking part are:

Bay Firewood	027 769 6348
Buyright Firewood	021 127 8957
Quality Firewood	027 449 0622
Richmond Wood and Coal	03 544 6473
Wholesale Firewood	03 546 9595 or 027 922 9611

Some Good Wood suppliers are also offering buy now pay later terms – ask the supplier for details.

Please remember to flush your taps

Some plumbing fittings have the potential to allow minute traces of metals to accumulate in water which has been standing in the fittings for several hours.

Although the health risk is small, the Ministry of Health recommends that you flush a cup of water from your drinking water tap each morning, before use, to remove any metals that may have dissolved from the plumbing fittings.

This is recommended for all households, including those on public and private water supplies.



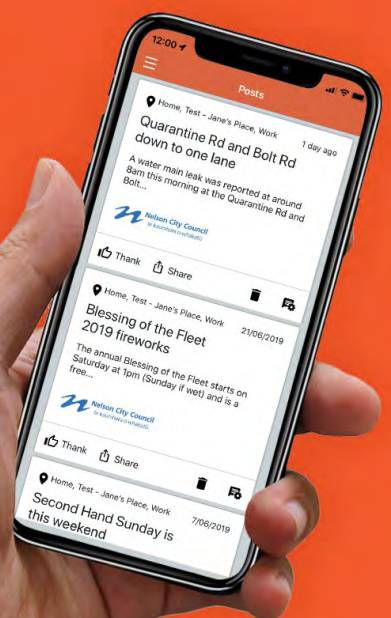
Antenno
Be informed. Get involved.

Stay up to date!

Antenno is a mobile app that sends you notifications about the places you care about.

It also lets you report issues in your area. It's free, easy to install and doesn't collect any personal data. Check it out today!

nelson.govt.nz/antenno



New accessible picnic tables at Queens Gardens

Visitors to Queens Gardens are now able to use a new set of accessible picnic tables created by Nelmac, Halswell Timber, the MenzShed and Nelson City Council.

Former Nelmac employee Bryan Hemi came up with the idea when scrolling through Facebook one day.

"I saw a picture of a park in Canada that had refitted existing picnic tables to make them wheelchair accessible.

"I thought, why not do that here in Nelson?

Bryan worked with Kate from the gardening team at Nelmac to find the right tables for the project.

"We settled on two picnic tables by the pond at Queens Gardens," Bryan says.

"They were already surrounded by asphalt and easily accessible, so it was just a matter of getting a crew and supplies together to refit the tables.

"Murray Leaning from Mitre 10 Helping Hands put me in touch with Alice and Jason Douglas from Halswell Timber, who agreed to donate the timber we needed. Nelson/Whakatū-Menzshed volunteer Denis Moriarty then helped prep and paint the timber for installation."

Council Parks staff member Haidi Spence arranged for labour costs to be covered and expanded the project to include the installation of accessible tables at Anzac Park as well, which are in development.

Bryan said the project experienced a significant delay due to COVID-19 lockdowns but didn't take long to finish once everything was back up and running.

"We replaced the timber boards on the existing tables with longer ones that extend past the bench seats, allowing someone who uses a wheelchair to sit flush at the table without a bench in the way.

"It's a pretty simple solution, but hopefully it will make a big difference for some people in our community."



Bryan Hemi from Detection Services (formerly from Nelmac) and Denis Moriarty from Nelson/Whakatū-Menzshed at the accessible table

Music Mix sessions

Nelson City Council in conjunction with Nelson Centre of Musical Arts and Multicultural Nelson Tasman present a series of fortnightly encounters with the world of music and musicians.

Music Mix is an opportunity for Nelsonians who enjoy music, but have never had an opportunity to give it a go, to do just that.

Held at Victory Community Centre, these one-hour free encounters will give audiences a chance to listen, talk, learn, perhaps to try an instrument, and hopefully start a musical journey of their own.

Presented in association with NCMA and Multicultural Nelson Tasman, Music Mix will run every fortnight through the summer (with a break over Christmas) and will feature a wide range of performers and instruments including the Nelson Youth Brass Band, NCMA Schola Musica with their 'Extreme Violins', the eastern flavoured music of "Klezoum" and many more.

Please come early, as seats will be limited due to COVID requirements.

This programme is supported by the Rātā Foundation and Pomeroy's.

Nelson City Council, Nelson Centre for Musical Arts
and Multicultural Nelson Tasman present

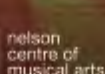
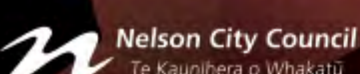


musicmix

A free music experience for all

11am - 12 noon
2021 Saturdays
13 November
27 November
11 December
2022 Saturdays
15 January
29 January
12 February

**At Victory Community Centre,
2 Totara Street, Nelson South**
Limited numbers



Multicultural
Nelson Tasman
UNITY IN DIVERSITY
kotahitanga i te kaitiaki



Rātā
Foundation

Event hosts wanted for Tuku 22 – Whakatū Nelson’s premiere heritage event

Applications are open for events in the upcoming Tuku 22, Whakatū Nelson’s month-long heritage celebrations.

Taking place during April 2022, Tuku 22 Whakatū Heritage Month has evolved from a week of activities, organised mainly by Council, to become community-focused, with multiple organisations and community groups running their own events with Council support.

In April this year, the newly renamed Tuku 21 Whakatū Heritage Month saw 6,007 people attend 69 events throughout the city.

The events ranged from a Victorian murder mystery night to heritage cooking demonstrations, a tour of sites of significance hosted by Ngāti Kuia , guided art walks, and so much more.

Grants of around \$2000 are available for creative individuals and organisations with ideas to host events or activities for inclusion in Tuku 22.

The grants work in partnership with Council, and as such, applicants will also need to contribute time or money to the project. Applications close on 20 December 2021.

Events must have a focus on heritage through stories of people and place and be open to the public. Events that celebrate Whakatū’s unique and diverse cultural heritage, and in particular, Māori or non-European stories, are welcome.

For more event criteria or to apply for a grant visit shape.nelson.govt.nz/tuku-22-whakatu-heritage-month



Talking Cafés

The 1st and 3rd Tuesday of the month at McCashins 10am - 11.30am. At 660 Main Road Stoke

The second Thursday of the month at Nook Café 10am - 11.30am. At the Habitat Hub, 166 Tāhunanui Drive

wellby.org.nz

SECRET LIES LIVES OF DRESSES

EVERY DRESS HAS A STORY, LET US TELL YOU OURS...

Some tales are true, memoirs of faithful diction, others may be poetry, or perhaps just purely fiction?

Come to Broadgreen Historic House to enjoy some of our beautiful costumes, find hidden details and uncover the stories of our gowns - from the traditional to the glamorous. Fashion history, mystery and a little dash of trickery.

Broadgreen Historic House
A Nelson City Council *venue*

Adults \$7, Children \$2, Families \$15, Locals free • Family friendly • 10.30am - 4.30pm daily
276 Nayland Road, Stoke, Nelson P 03 547 0403 W nelson.govt.nz/broadgreen
Display runs November 2021 to May 2022.



MEETINGS

Infrastructure Committee	18 Nov
9am	
Audit, Risk and Finance Subcommittee	25 Nov
9am	
Nelson Regional Sewerage Business Unit	26 Nov
9.30am	
Civil Defence Emergency Management Group	29 Nov
4pm	
Community Investment Funding Panel – Rūma Manuka, Elma Turner Library	30 Nov
12.30pm	
Chief Executive Employment Committee - Rūma Whakatū	30 Nov
2pm	
Hearings Panel - Other	1 Dec
9am	
Forestry Subcommittee	1 Dec
1pm	
Community and Recreation Committee	2 Dec
9am	
Strategic Development and Property Subcommittee	3 Dec
1pm	
Regional Transport Committee	6 Dec
1.30pm	
Council meeting	9 Dec
9am	
Nelson Tasman Regional Landfill Business Unit	10 Dec
9.30am	

Cancelled meeting
Joint Shareholders Committee, previously advertised to take place on 23 November 2021 at 1.30pm, has been cancelled due to lack of business.

For a full list of meetings go to:

nelson.govt.nz/meetings



To sign up for Our Nelson by email go to:

facebook.com/nelsoncitycouncil

Arts and Heritage Partnership grants available now

Whether it's a light art projection, mural, heritage experience or community art event, Nelson City Council is eager to hear about your projects and help support our vibrant creative community with a grant.

Projects eligible for Council's Arts and Heritage Partnership can be heritage focused, arts focused, or a combination of both - Council is keen to hear from anyone who has an idea that will benefit the community.

The grants are available at any time during the year and are designed to be flexible to help our city's creative and cultural community deliver their projects within short time frames. Applications are assessed as they come in, and applicants can expect a response within 10 working days.

Grants range in size from \$500 to \$4000, and larger sums may be considered depending on the project size and reach.

Light art projections are among the arts projects Council has supported in the past, and Council has two 12-kilowatt light art projectors available for loan. In recent times, these have been used in the Te Ramaroa and Matariki celebrations and can project large-scale artworks onto buildings.

Other recently supported projects include First Flight, a play exploring our cultural heritage and celebrating the region's 100th Anniversary of Flight.

For more information, or to apply for a grant, see shape.nelson.govt.nz/arts-heritage-partnership-grants.

Nelson Public Libraries programmes return

Device Advice

Elma Turner Library Tuesdays and Thursdays 2-3pm; Stoke Library Tuesday and Wednesdays 2-3pm.

At Alert Level 2 customers will be required to wear a mask to attend Device Advice. If you have a mask exemption, please contact us so that we can discuss other options to assist you.

Knitting

Thursdays 10am-12pm

At Alert Level 2, a maximum of 15 people can attend this programme.

Attendees must wear a mask unless exempt, maintain social distancing,

and sign in.

Grab and Go Hobby kits

These bags will be available again – free to borrow for 2 weeks. Each bag contains a range of items to start you off on a new hobby.

Due to the uncertainty around COVID-19 alert levels please ensure you check itson.co.nz regularly for event updates.

WHAT'S ON... at a Council venue near you



Kirby Lane

Kirby Fridays, every Friday night during summer, 4.30pm – 9.00pm

Trafalgar Centre

Nelson CoNZtruct, Wednesday 17 November, 4pm – 7pm

Founders Heritage Park

Founders Café/Songs at Sundown, Friday 19 November, 6.00pm – 8.00pm

The Great Christmas Market, Sunday 21 November, 9.00am – 4.00pm

Founders Café/Songs at Sundown, Friday 26 November, 6.00pm – 8.00pm

Nelson Parent and Child Expo, Sunday 5 December, 10.00am – 3.00pm

Founders Café/Songs at Sundown, Friday 10 December, 6.00pm – 8.00pm

Isel House and Park

Isel Twilight Takeaway Market, every Thursday night from 30th September – Thursday 14th April 4.30pm

Isel Christmas Markets, December 2, 9, 16, 23, 4.30pm until dark

Greenmeadows Community Centre

Nelson/Tasman 100th Aviation Celebration, Thursday 11th – 13th November

Nelson Public Libraries:

Elma Turner Library

Hours:

Monday, Tuesday, Thursday, Friday: 9:30am — 6:00pm

Wednesday: 10:00am – 6:00pm

Saturday: 10:00am — 4:00pm

Sunday: 1:00pm — 4:00pm

Device Advice, every Tuesday & Thursday, 2.00pm – 3.00pm

Shared Reading for Wellbeing, every Tuesday 11:30am – 12:30pm

STEM writers, every second and fourth Tuesday of the month 1:00pm – 3:00pm

Tea & Tales – Dementia Friendly Book Group, every Wednesday, 11.00am –

12.30pm

Library Knitters, every Thursday. 10:00am – 12:00pm

Justices of the Peace, every Saturday 10.00am – 12.00pm

Community Law – Enduring Power of Attorney and Disability, Monday 22

November, 12.30noon – 1.30pm

Brain Injury Association – Drop-in Session, Thursday 25 November, 10:00am –

12:00pm

How to use RealMe, Thursday 25 November, 10:00am – 11:00am

NaNoWriMo Wrap Up, Sunday 28 November, 1:00pm – 4:00pm

Community Law – Trusts, Monday 29 November, 12:30pm – 1:30pm

Community Law – Wills and why you need one, Monday 6 December, 12:30pm

– 1:30pm

Santa's Grotto, Saturday 11 December, 11:00am – 12:00pm

Community Law – Residential Tenancies Act and recent changes, Monday 13

December, 12:30pm – 1:30pm

Nightingale Library Memorial.

Hours:

Monday, Wednesday, Friday: 1.00pm — 4.30 pm

Tuesday, Thursday: 10.00am – 2.00pm

Saturday: Closed

Sunday: 10.00am — 2.00pm

Stoke Library

Hours:

Monday, Tuesday, Thursday, Friday: 9:30am — 5:30 pm

Wednesday: 10:00am – 5.30pm

Saturday: 10:00am — 1:00pm

Sunday: Closed

Device Advice at Stoke Library, every Tuesday & Wednesday at 2pm

Stoke Library Bookchat, every third Wednesday of the month 5.30pm –

6.30pm

Christmas Morning Crafts at Stoke, Tuesday 7 December, 10:30am – 12:30pm

Santa's Grotto, Friday 10 December, 3:30pm – 4:30pm

Museums and Galleries:

The Suter Art Gallery & Theatre

Hours: 9.30am – 4.30pm Daily

Refinery ArtSpace

Hours: 10am – 5pm, Monday to Friday & 10am – 2pm, Saturday

DII Moffatt, Monday 8 – Saturday 4 December 2021

Cloud of Unknowing – Linfda Dimitrievski, Monday 8 November – Saturday 4th

December

Patrick Malone – New Works, Monday 6 December – Saturday 22 December

Taarn Scott, Monday 6 December – Saturday 22 January

Nelson Provincial Museum

Hours: 10 - 5pm Weekdays, 10am - 4.30pm Weekends & Public Holidays

Dinosaur rEvolution – Secrets of Survival, Tuesday 19 October – Sunday 27 March