



Street Ambassador Paul McConachie (in the safety vest) with library staff

A big hello to our library street ambassadors!

You may have noticed some new friendly faces inside the front entrance of Elma Turner Library recently. Two new Street Ambassadors will be on the door on Fridays 9.30am to 6pm, Saturdays 10am to 4pm and Sundays 1pm to 4pm for the next two months.

Nelson City Council has decided to continue its partnership with the Street Ambassadors who will assist library staff with scanning vaccine passes, answering questions and managing crowd flow.

What are Street Ambassadors? They are members of the community trained in youth work, de-escalation and first aid, and work in pairs to engage with locals and visitors in a positive way, helping Council to ensure people can use the library while feeling they are in a safe environment.

"We had Street Ambassadors assisting at the entrance of Elma Turner Library in December 2021 and the feedback we got was that they were an engaging, fun and reassuring presence," says Incident Management Team lead Alec Louverdis.

"It's great that they are once again able to support our hardworking library staff at this time."

Street Ambassador Paul McConachie says a big part of the role is to help ensure the first interaction people have when visiting the library is a positive one.

"It puts people in a good frame of mind and reassures them that their safety needs are being looked after by Council.

"While we're trained in de-escalation and refocussing techniques, most of our work comes down to simply being kind, respectful and a good person."

Paul says the rewarding nature of the work keeps Street Ambassadors coming back.

"We come from a range of backgrounds — some of us are youth workers, social workers or counsellors, others are students — but we come back season after season because it's so rewarding to connect with people in this way."

Vaccination centre moves to Trafalgar Centre

The vaccination centre at 16 Paru Paru Road in Nelson has moved to the Trafalgar Centre until 18 February.

The Trafalgar Centre is doing walk-ins.

You are eligible to get your booster dose if you are aged 18 and over and it has been three months since you completed your primary vaccination course.

Boosters lower your chances of getting very sick from the Omicron variant of COVID-19 and ending up in hospital. Fewer hospitalisations from COVID-19 will mean our health system can continue to provide the range of care people need, in particular for our most vulnerable such as people with disabilities or long-term illnesses.

If you have an appointment already booked in for Paru Paru Road, you will receive a text asking you to go to the Trafalgar Centre instead. Alternatively, you can rebook your vaccination for another location. Visit: [BookMyVaccine.nz](https://bookmyvaccine.nz)

For further details go to the Nelson Marlborough Health website: nmdhb.govt.nz

Nelson City Council facilities at COVID-19 Protection Framework Red

Here is the latest on safe access to Nelson City Council's facilities at Red traffic light in the COVID-19 Protection Framework.

COVID-19 is in our community and we need to take action to protect our vulnerable communities and health system from the virus.

Council provides a range of facilities and services, from campgrounds to venues, and has had to make decisions about each that fit within the new framework.

While the requirements at most venues remain the same as at the Orange traffic light, any new requirements will be clearly signposted.

Below is a run-down of how Council facilities operate at Red:

Libraries

A vaccine pass is required for access to Nelson's public libraries.

Elma Turner Library and Stoke Library offer a Click and Collect service to ensure everyone can access their collections.

Customer Service Centre

Many people need to interact with Council on a face-to-face basis, which means vaccine passes will not be required to enter the Customer Service Centre.

There will be rules in place to ensure safety: one metre physical distancing, capacity limit of eight, masks compulsory for customers, and one-way entry/exit.

Pools and gyms

Vaccine passes are required at Riverside Pool, Nayland Park Pool and Riverside Gym. Nayland Pool will be closed to the public at certain times during the week while school groups use the pool.

Founders Heritage Park

General admission: As Founders is largely an outdoor venue, a vaccine pass is not required for entry, but one metre physical distancing and masks will be required. A vaccine pass will be required for Founders Café.

Events: A vaccine pass will be required for all events at Founders.

Organisers of events will be required to provide Council with a health and safety plan. Events are limited to up to 100 people with one metre distancing practised.

Gatherings: A vaccine pass is not needed to book a gathering at Founders. A gathering is limited to up to 25 people with one metre distancing practised.

Isel and Broadgreen House

To ensure the health of visitors and the volunteers who run both Isel and Broadgreen houses, both facilities are closed at Red.

This does not impact The Garden Window Kiosk at Isel House, which may remain open.

Campgrounds

Council is owner-operator of the Brook Valley Holiday Park, which has many long-term occupants. Long-term occupants are not required to have a vaccine pass to access the place they live.

New arrivals and visitors will be required to provide a vaccine pass.

Waahi Taakaro Golf Course

The golf course will not require a vaccine pass to play.

The golf club, which is separate from the golf course, does require a vaccine pass to enter the clubhouse, golf shop, and club competitions and tournaments.

Wakapuaka Chapel/Crematorium

Vaccine pass requirements are at the discretion of the hirer or funeral director. If vaccine passes are used there are capacity limits of 25 people.

Workers at funerals and tangihanga must wear face coverings, and mask wearing by attendees is strongly encouraged in line with government guidelines.

Without vaccine passes, the chapel will require one metre physical distancing and will have a capacity limit of 25 people.

Funerals, tangihanga, burials at a cemetery

Vaccine pass requirements are at the discretion of the hirer or funeral director. If vaccine passes are used there are limits of 100 people.

Workers at funerals and tangihanga must wear face coverings, and mask wearing by attendees is strongly encouraged in line with government guidelines.

Without vaccine passes, cemeteries will require one metre physical distancing and will have a limit of 25 people.

Venues

Nelson City Council venues will operate differently depending on whether they are booked for an event or gathering.

For all venues, with the exception of Pūtangitangi Greenmeadows Centre, the following rules apply:

If a vaccine pass is required:

Events and gatherings may occur with up to 100 attendees – the number of attendees allowed (up to 100) will depend on how many people can be in the space with one metre distancing.

If a vaccine pass is not required:

Only gatherings can be held. At gatherings, there can be up to 25 attendees – the actual number of attendees allowed (up to 25) will depend of how many people can be in the space with one metre distancing.

The Pūtangitangi Greenmeadows Centre will always require a vaccine pass, as it is not possible to stop different events or gatherings from intermingling in public spaces.

Events run by Council or held at Council facilities

Due to restrictions around events held at Red under the COVID-19 Protection Framework, Council has made the difficult decision to cancel some of its upcoming Summer Events, and some events scheduled to be held at Council venues are also cancelled.

February's Opera in the Park has been cancelled, with the event likely to be held in February 2023. The Nelson Fringe Festival has been delayed until June 2022. Other events affected at Trafalgar Venues include bennee (cancelled) and Blindspott (postponed).

Events that are due to take place later in the year will be assessed on a case-by-case basis, and the COVID-19 Protection Framework rules that are in place at the time.

For event updates and further details, go to the Its On website, nelson.govt.nz/summer-events, or the Nelson City Presents Facebook page.

Marina facilities and office

As people live aboard their boats at the Marina, it is not practical to require vaccine passes to use Marina facilities. A one metre physical distancing rule will apply and mask wearing is strongly encouraged.

The Marina office will not require a vaccine pass, but only one person can enter at a time, due to limits on space.

Pascoe street kiosk (waste/recycling)

The transfer station kiosk will not require a vaccine pass. Kiosk users should remain in their car and pay using a contactless method only.

New at Red: Mask wearing and one metre physical distancing will be in place.

Citizenship ceremonies

Citizenship ceremonies will not go ahead at Red, pending guidance from the Department of Internal Affairs. If they do eventually go ahead they will need to follow these guidelines.

Ceremonies in the Council Chamber will be classified as events due to the number of people in a confined space. This means a vaccine pass will be required, and mask wearing will be strongly encouraged.

New at Red: There will be a capacity limit of up to 100 people based on one metre social distancing.

Public engagement meetings and events

Each public engagement meeting or event will need its own plan to determine the necessary requirements needed to be in alignment with the COVID-19 Protection Framework.

Meeting with Council staff

To protect the health of staff and the public, all enquiries for duty planning and building officers will be responded to by email, phone or on Zoom/Teams (video calls). Please indicate your preference when making your enquiry and an officer will contact you at the appointed time. Please be aware that under Red, more Council staff will be working from home, in line with government guidelines.

Council will update the community with new guidelines should we move to a different colour, or if there is a change for any other reason.

Mask wearing requirements in the Red setting

- All masks must be attached to the head by loops around the ears or head. That means no scarves, bandannas, or jerseys pulled up over the face.
- Masks will also be required at all close-proximity businesses, food and drink businesses and events and gatherings. There will continue to be some exceptions, for example, when you are eating and drinking, at a swimming pool, or when you are doing exercise.
- All workers who are legally mandated to be vaccinated must wear a medical grade mask (for example a Type IIR/Level2 masks or above) while working in public facing roles. These include the widely available blue medical-grade masks.
- All primary and secondary school students Year 4 and up will need to wear a face mask on public transport and Ministry of Education funded school transport services.

For more information about the COVID-19 Protection Framework visit the Unite Against COVID-19 website:

covid19.govt.nz

For more information about COVID-19 locations of interest go to the Ministry of Health website:

health.govt.nz

For local information regarding COVID-19 visit the Nelson Marlborough Health website:

nmdhb.govt.nz

Find funding for ideas to reduce waste

Nelson City Council has a range of grants available to our community to avoid or reduce solid waste and keep it out of the landfill.

If you have an idea, big or small, to reduce or avoid waste in your business, school or wider community, we can help make it happen.

Our grants support Council's waste management and minimisation plan, which includes a target of reducing waste to landfill by 10% per person by 2030.

To find out about separate grant programmes and conditions for applying, contact rethinkwaste@ncc.govt.nz.



nelson.govt.nz/waste-minimisation-grants

Mayor's Message

Tēnā koutou e te whānau o Whakatū

As we leave our holiday break behind, our tamariki and rangitahi returning to school and facing a new stage in addressing the presence of COVID-19 in our community (especially the newish Omicron variety), now might be a good time to look at what we've learnt as a community from the COVID-19 pandemic.

The Nelson-Tasman region has responded extremely well. We have been proactive and caring and that has put us in a resilient position for the next few months.

None of this would have been possible without our dedicated health workers who continue to put in long hours to look after us all. Every one of them deserves a medal so please thank them when you get an opportunity.

As a community, we have reached a 93% vaccination rate, although there remain some key groups who have not yet received both their initial vaccinations or booster.

School students will be returning to modified learning environments and I know our educators are very conscious of both keeping everyone safe and creating the best experiences they can.

Having a plan in place to return to a full school programme and after school activities has got to be a priority for 2022.

The announcement of the border reopening was welcome news and we can now look forward to the return of friends and family who have been trapped overseas, often in more challenging situations than here. Some people may also be planning overseas travel again. The border reopening is

critically important to our business community who need to access key markets and workers.

The year will continue to deliver challenges to business. On top of the direct impact of the pandemic and labour shortages they also face disruption to logistics chains, making it difficult to source a full range of products as well as restricting shipping goods to customers.

So the song remains the same in dealing with the virus – keep yourself as healthy as possible, follow the community guidelines in contact tracing, mask wearing and social distancing and if you feel unwell get tested. If in doubt seek medical advice.

In among all of this, it's important to remember that we are still open for business and providing we take the necessary precautions we can get on with our lives and enjoy the wonderful produce and services we have, as well as staying active.

So the Mayor's Message today – follow the guidelines, keep calm and carry on.

Noho ora mai

Nelson Mayor Rachel Reese



Omicron is here, but local businesses still need your support

With Omicron starting to spread in New Zealand and the country now in Red under the COVID-19 Protection Framework (CPF), Thursday 27 January was quieter than usual in Nelson for a midsummer day.

Nelson Mayor Rachel Reese stopped in at cafes and shops in the City Centre to see how local businesses were getting on. The consensus was that business had noticeably slowed.

Shoe Clinic owner/operator Brett Meehan said business had been quieter since the announcement of Omicron cases in the region.

"You can definitely tell people are a bit wary of venturing out. We've started taking some extra precautions to reassure customers and reduce the chances of the virus spreading in the store."

Brett and his team are now wearing N95 masks.

"I made the decision because we work in such close proximity with customers and have such a small team.

"If one of us gets sick, that puts a lot of extra strain on the others, and it can really be crippling to the business if we're forced to close for extended periods of time again. We also want to ensure our customers feel safe when they visit the store."

Mayor Reese said it was good to see business working to protect their staff and customers.

"Our community has responded well to the presence of COVID-19 in the region. We can't let up on measures to keep people safe but it's important to safely get on with our lives. "

"We're open for business, and I encourage people to continue stopping by," said Brett. "We just ask that everyone please continue to be patient and respectful as they have been when visiting. It's been a very difficult two years, and we're all doing the best we can."

The Government currently has a three-phase approach for responding to Omicron. As of Friday 4 February, New Zealand is in Phase One, where we use the existing tools at our disposal to try to "stamp out" the virus in the community.

This means wearing masks at food and drink businesses, close-proximity businesses, and events and gatherings. Scanning in with the COVID-19 tracer app also helps officials stay ahead of the virus. For the latest info on the current community outbreak of COVID-19, testing centres, and vaccination bookings, visit the Nelson Marlborough Health website at:

health.govt.nz

Nelson City Council retains AA/A-1+ credit rating

Credit rating agency S&P Global has affirmed Nelson City Council's AA long-term and A-1 short-term credit rating with a stable outlook, due in part to prudent financial management as New Zealand recovers from a recession induced by COVID-19.

Standard and Poor's report says they expect the next few years to see Council recording moderate after-capital-account deficits, with an uptick on capital investment in core infrastructure and city centre revitalisation projects.

The report notes "Nelson's robust financial management", and expects capital expenditure to be around \$58 million a year, up from pre-pandemic levels of about \$30 million to \$35 million, with higher capital spending budgeted for water infrastructure upgrades and a new city centre library.

Local elections 2022: get involved!

Local government elections are happening throughout New Zealand this year, with voting opening late September and ending 8 October 2022. If you want to have a say in Nelson’s future—either by standing for election or voting—you must first be enrolled to vote.

You are eligible to enrol and vote if you are 18 years or older, a New Zealand citizen or permanent resident, and you’ve lived in New Zealand continuously for 12 months or more at some time in your life.

You can enrol to vote by visiting vote.nz/enrol-or-update-online/, calling the 24-hour Freephone number 0800 36 76 56 or texting your name and address to 3676 to have an enrolment form sent via mail.

Enrolling to vote also means you can stand for local election for the position of mayor or councillor.

Why stand for election?

People have many different reasons for wanting to stand for council, but most have a strong desire to represent and serve their community.

The mayor and councillors make important decisions that affect all of us today, tomorrow, and for years to come. For Nelson, these decisions involve the everyday services needed to keep our city running, as well as important broader issues such as the health of our environment, flood protection, recreation and community services, emergency management and regional transport.

What’s stopping you?

Every election cycle, councils in New Zealand are asked to help increase democratic participation of traditionally under-represented groups. We want to know first-hand the barriers people in our community face in enrolling, making an informed vote, and standing for Council.

If you want to provide us with your story or ideas fill in the survey at: shape.nelson.govt.nz/local-election-2022-diversity-and-participation. Feel free to leave your contact details, but you can also fill in the form anonymously.

If you have a desire to represent the views of the people of Nelson, to make Nelson a better place for everyone, and to use your unique skills and knowledge to help our community, then you should consider standing for election.

Nelson City Council will be putting out further information about standing for election as the year goes on, but for now, you should first make sure you are enrolled to vote. Only New Zealand citizens who are enrolled to vote are eligible to stand for election.

Key dates for the 2022 local elections:

NOW	Enrol to vote
NOW	Consider standing for election
Friday 15 July 2022	Candidate nominations open
Friday 12 August 2022	Candidate nominations close
Wednesday 17 August	Candidates announced
16 – 21 September 2022	Voting documents delivered
16 September – 8 October 2022	Voting opens
8 October 2022 at 12 noon	Election Day: voting closes midday

Nelson-Tasman launches Welcoming Communities programme

Nelson and Tasman councils will be able to make the region an even more welcoming place for refugees and immigrant communities after officially being added to Immigration New Zealand’s Welcoming Communities programme.

As part of the programme, Immigration New Zealand provides three years of seed money to both Nelson and Tasman councils to employ Welcoming Communities coordinators, who help to make the region even more welcoming and inclusive for immigrants.

The event was opened by local kaumātua Harvey Ruru and hosted by the Nelson Tasman Settlement Forum at Victory Community Centre, with speeches from Nelson Mayor Rachel Reese, Tasman Mayor Tim King, and Nelson MP Rachel Boyack.

Mayor Reese is delighted the region is now part of the Welcoming Communities programme.

“It allows us to continue to work with our community to offer a positive and rewarding experience for newcomers setting up a life here”, she says.

“The development of immigration into the Nelson and Tasman region has been a story of not only increasing numbers but of ever-increasing diversity. This rich diversity is part of what makes Nelson Whakatū a wonderful place to live,” Mayor Reese says.

Mayor King says involvement in the programme helps our community offer the necessary support for those new arrivals looking to find their way in a new cultural environment.

“A diverse range of nationalities call our region home, and we benefit in so many ways from the contribution these new Kiwis bring to the community – in a practical sense through the skills they bring to the workforce or by adding their unique cultural perspectives to the New Zealand way of life.”

The Welcoming Communities initiative is for regional centres that have shown they have good infrastructure and social support for welcoming refugee and immigrant communities.

The launch event was attended by about 50 people representing the two councils, non-government organisations, immigrant communities, and the local business sector.

It was followed by a workshop where attendees could provide ideas for what they would like to see achieved through Welcoming Communities over the next three years.

The Valuation Rolls for Nelson City Council have been revised by Quotable Value Limited (as the Council's valuation service provider).

The revised rating values are effective as at 1 September 2021, and the new notices of valuation will be posted to owners and ratepayers from 2 February 2022. The District Valuation Rolls will be open for public inspection, free of charge, during regular office hours, at the offices of the Nelson City Council: 110 Trafalgar Street, Nelson.

The revised values can be viewed until 10 March 2022.

Objections to the revised valuations must be lodged, in writing or online, at ratingvalues.co.nz no later than 10 March 2022.

Objection forms are available from Nelson City Council or Quotable Value Limited and should be posted to:

[Quotable Value Ltd – Business Support](#)

[Private Bag 39818](#)

[Wellington Mail Centre](#)

[LOWER HUTT 5045](#)

The revised rating values will be used for rating purposes from 1 July 2022.

More information about "understanding your rating value can be found at

ratingvalues.co.nz

Pat Dougherty
Chief Executive

Nelson resource management plan public notice of summary of decision requested by submitters on proposed private plan change 28

Clause 7(1), First Schedule, Resource Management Act 1991 (RMA)

Nelson City Council (NCC) gives notice that the Summary of Decisions Requested by Submitters on Proposed Private Plan Change 28 (Maitahi-Bayview Private Plan Change) to the operative Nelson Resource Management Plan is available for inspection.

The Summary of Decisions Requested and the original submissions are available for public inspection, at the following locations:

- Nelson City Council, Customer Service Centre, Civic House, 110 Trafalgar Street, Nelson;
- All open public libraries in the Nelson region;
- The NCC website: shape.nelson.govt.nz/private-plan-change-28-maitahi-bayview.

Paper copies of the Summary of Decisions Requested and copies of the original submissions are available from Customer Service for a cost as set in the NCC Annual Plan, or downloaded free of charge from the NCC website.

Further Submissions

Further submissions are now invited in support of, or in opposition to, the submissions received. A further submission must be limited to a matter in support of, or opposition to, a relevant original submission. A further submission must be in the prescribed form - Form 6 in Schedule 1 of the Resource Management (Forms, Fees and Procedures) Regulations 2003. A further submission form is included in the Summary of Decisions Requested or can be obtained from:

- NCC Customer Service Centre; or
- NCC website: shape.nelson.govt.nz/private-plan-change-28-maitahi-bayview.

Under Clause 8 of the First Schedule to the Resource Management Act 1991, one of the following persons may make a further submission:

- Any person representing a relevant aspect of the public interest;
- Any person that has an interest in the Private Plan Change greater than the interest that the general public has; and
- NCC.

A copy of the further submission must be served on NCC. Within 5 working days of serving it on NCC, you must also serve it on the person who made the submission to which the further submission relates.

The closing date for further submissions is 5.00pm Friday 25 February 2022. Please mail further submissions to: [Private Plan Change 28 to the operative Nelson Resource Management Plan, Nelson City Council, PO Box 645 Nelson 7040](#). Or deliver to the office of NCC, or by email to: submissions@ncc.govt.nz with "PC28 Maitahi-Bayview Further Submission" in the subject line.

Pat Dougherty
Chief Executive

New rating valuations for Nelson

Nelson property owners will soon receive a Notice of Rating Valuation in the post with an updated rating value for their property.

The new rating valuations have been prepared for 22,831 properties on behalf of the Nelson City Council by Quotable Value (QV).

Rating valuations are usually carried out on all New Zealand properties every three years to help local councils set rates for the following three-year period. They reflect the likely selling price of a property at the effective revaluation date, which was 1 September 2021, and do not include chattels. They are not intended to be used as market valuations for raising finance with banks or as insurance valuations.

On average, the value of residential housing has increased by 42% since 2018 with the average house value now sitting at \$885,000, while the corresponding average land value has increased by 73% for an average of \$508,000.

Local QV Manager for Nelson/Marlborough Craig Russell said:

"We have seen significant growth in the residential sector since 2018 which has been fuelled by record low interest rates, a shortage of listings, and strong regional migration in addition to a number of ex-pats returning. The majority of value increases has stemmed from pressure on land with Nelson's geography making it difficult to develop land at scale. This has led to intensification with strong demand from developers for modest homes on larger easy to develop sites."

Meanwhile, the commercial and industrial sectors have had moderate increases across the city. Commercial property values increased by 14% and property values in the industrial sector have increased by 27% since the city's last rating valuation in 2018. Commercial and industrial land values have increased by 31% and 36% respectively.

It is helpful to remember the effective rating revaluation date of 1 September 2021 has passed, and any changes in the market since then will not be included in the new rating valuations. This means in many cases a sale price achieved in the market today may be different to the new rating valuation set as at 1 September 2021.

Nelson City Council will use the new values as the base for setting rates from 1 July 2022.

Group Manager Corporate Services Nikki Harrison, said it was important that property owners remember that a change in the rateable capital value of a property does not mean rates will change by a similar percentage.

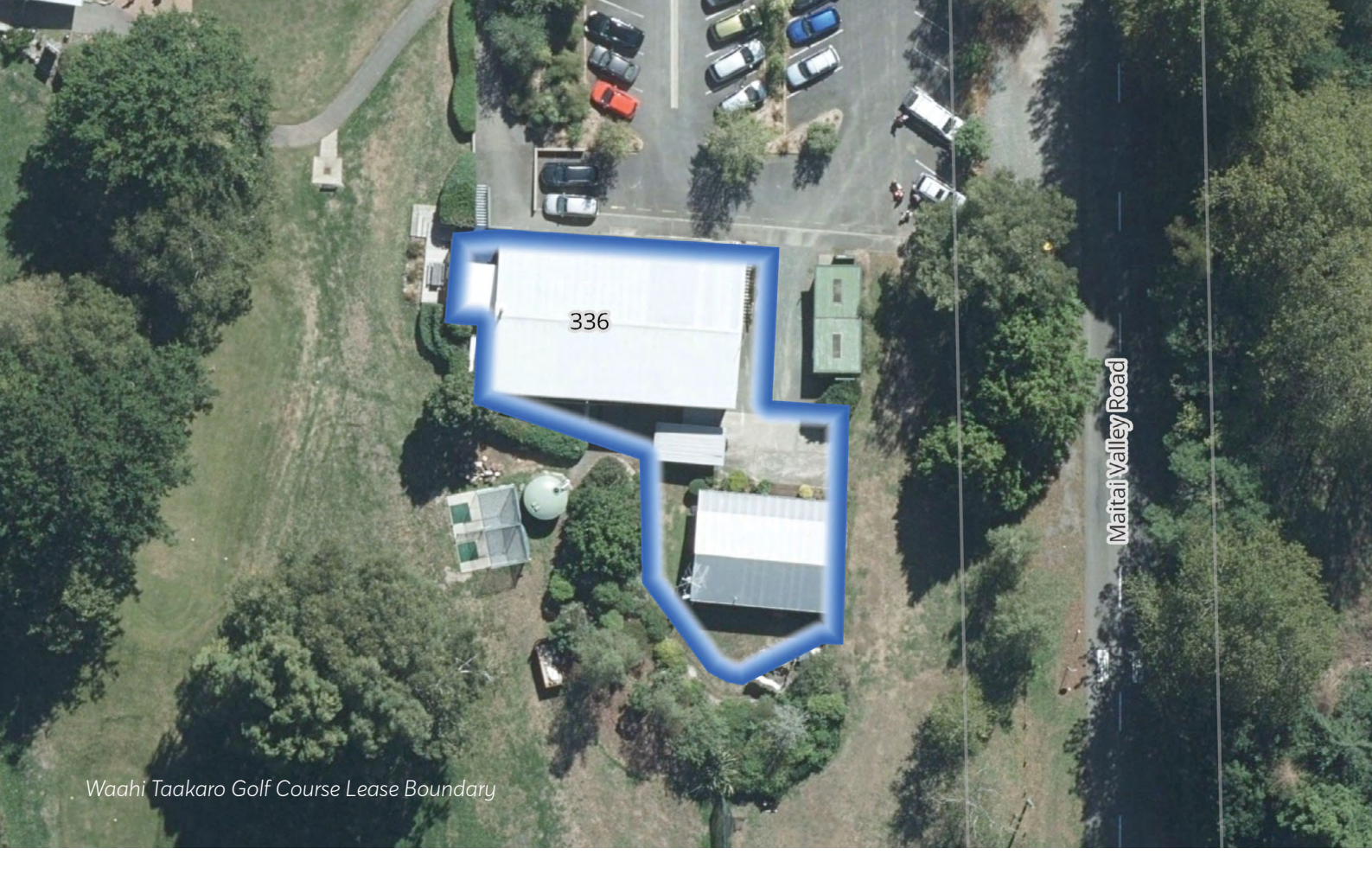
"The revaluation does not generate any additional rates for Council. Rather, it means rates will be spread between ratepayers in different proportions than before."

Find out more about the rating revaluation and objection process:

qv.co.nz



Photo credit: Markus Koljonen, CC BY-SA 3.0



Waahi Taakaro Golf Course Lease Boundary

Notice of proposed lease renewal for the Waahi Taakaro Golf Club at 336 Maitai Valley Road

Public Notice Date: 9 February 2022
Closing date and time: 9 March 2022 at 4pm

Council proposes to renew the ground lease for the Waahi Taakaro Golf Club buildings at 336 Maitai Valley Road with the Waahi Taakaro Golf Club Incorporated.

The land is legally described as LOT 1 DP 10588 BLK 1 MAUNGATAPU & BLK IX WAKAPUAKA SD – REC RES – WAAHI TAAK ARO. The land is held as recreation reserve and subject to the provisions of the Reserves Act 1977.

The proposed renewal is for an initial term of five (5) years with one right of renewal of five (5) years.

Any person wishing to make an objection or submission to on this proposal should please contact Council:

- Online through the Shape Nelson page
- In person through the Customer Service Centre – 110 Trafalgar Street, Nelson
- By phone on 03 546 0200
- Or by email enquiry@ncc.govt.nz

Objections or submissions must be made no later than 4pm on 9 March 2022 and confirm if the objector or submitter wishes to make an oral objection or submission to support their written objection or submission.

Secondhand Sunday returns on 13 February

Secondhand Sunday is a fun way for Nelson and Tasman residents to declutter and re-home unwanted household goods for free.

The first Secondhand Sunday of 2022 is on 13 February from 9am-2pm.

If you have items you want to give away, simply register online to get on the list of participating addresses and print off a poster to put on your mailbox.

The list of participants will be available to download from 12pm, Friday 11 February.

The event will take place rain or shine, and at Red.

Remember to keep a safe distance from others and wear a mask when collecting items.

If offering items, please consider providing a paper register or QR code for collectors to scan (instructions on the Nelson City Council website).

To register or for further details go to the Nelson City Council website:

nelson.govt.nz/shs

Climate Action

The Nelson Tasman Climate Forum – a model for a better future

We are living in extraordinary times. Since the industrial revolution there has been a 55-fold increase in total consumption of non-renewable fuels, a mass displacement of natural habitats, and an unprecedented rise in greenhouse gas emissions. 50% of all the fossil fuel ever produced has been consumed within the last 30 years.

We accept our current model of economic growth as the norm, but can it be adapted for a better future? What sort of alternatives are on offer?

The Nelson Tasman Climate Forum is carving up the mahi and taking a strategic approach to the problem of climate change. Fifteen specialised focus groups work within their various fields to lessen the impact of climate change, to influence others to take action and to give a home to those that are able to donate their time and energy to help us to influence positive change.

If your area of interest is carbon sequestration, the Forum has a group you can join that runs workshops on biochar and organises regular tree planting days.

Perhaps you are interested in inspiring young minds; our schools group created new awards for last year's Cawthron Sci-tech Expo and ran the successful How Dare You Arts Expo where local children submitted art works relating to the climate crisis.

A group focused on waste runs regular repair cafes alongside Nelson City Council, ensuring the best use of resources, volunteers and funding.

Submissions to both local and central government are an important focus, as is the sharing of knowledge – the Forum frequently hosts guest speakers and is looking forward to welcoming New Zealand ecologist Mike Joy in March.

We would love you to connect with us and you can learn more by visiting nelsontasmanclimateforum.org

- Nelson Tasman Climate Forum

Report an issue with Antenno

Nine parking meters were needlessly damaged in the Nelson city centre recently. Fixing this damage takes up staff time, stops our contractors from completing other work, and causes an unnecessary burden on our maintenance budget.

If you come across a damaged meter, please use the next available meter, or alternatively use the 'Pay My Park' app when paying for parking.

Police have been reviewing CCTV footage, but if you are out and about and see anything which needs to be fixed or sorted, you can let our Customer Service Centre know through the Antenno mobile phone app.

How to report an issue on Antenno

Are you familiar with Antenno? It's an app that allows you to stay up-to-date with important Nelson City Council information—road closures, recycling dates, holiday hours and calls for submissions on Council projects.

The app also allows you to report issues that need addressing, share your ideas with Council, and give feedback on Council services.

You can download Antenno for free from your mobile app store.

For those new to the app, we've provided a walk-through on how to report issues or ideas to Council.

You can find the full guide online at nelson.govt.nz/services/apps/antenno

1. Click 'Report it' in the bottom right corner of the app.
2. From the 'Your reports' menu, click the 'plus' sign in the top right corner.
3. Click in the 'Report type' field to select a category.
4. Choose a category. Click on the relevant category to report an issue or select 'Feedback & Ideas' to share your thoughts.
5. Once your 'Report type' is selected, click 'Next'.
6. Add a photo. This is optional, but it helps us address the issue. You will need to grant the app access to your camera when prompted. Once you've added a photo, or if no photo is needed, click 'Next'.
7. Enter the location of the issue you are reporting. You may need to allow the app access to your location. Either type the address into the 'Enter an address' field or drop a pin on the map.
8. Describe your issue or share your feedback, then scroll down to add your contact information.
9. Click 'Next' to review your report.
10. Scroll down to review your report is correct then click 'Send'.
11. Your report has been sent. You can monitor its status from the 'Report It' menu in the app.

Council will contact you once your issue has been resolved.



Tangaroa artwork installed at Nelson's Saxton Creek Culvert

Mā tini mā mano ka rapa te whai – many hands make light work.

Tangaroa, God of The Sea, now overlooks the Saxton Creek culvert, represented by Toi Māori artworks designed by Nelson artist Isaac Andersen (Ngāti Kuia, Ngāti Porou) included in the headwall adjacent to Main Road Stoke.

The design, symbolising the taonga species that thrive in the Saxton Tidal Creek area, was built by Stressed Concrete Products Nelson, etched by Brent Connor at Liquid Cut NZ, cut by Simon Crawford at Fabriweld, and installed by Downer NZ Ltd.

Andersen provided an explanation of his artwork:

"The head of Tangaroa is depicted in the shape of a wheke (octopus), and the eight iwi of Te Taihū are also embodied within the design. The scales on his body represent sea birds and the larger fin scales, the Paddle Crab. His tail wraps around and fans out with the large scale at the base symbolising the Stingray."

The blessing for the artwork was led by iwi Pou Tikanga Barney Thomas, Harvey Ruru, Amai Thompson and Craig Shepard at a ceremony held on Tuesday 25 January.

Speaking at the blessing, Thomas said:

"We haven't had any rain for days, and although it is raining today it is still beautiful, and very appropriate because that is the purpose of the culvert. To drain away the rain and reduce flooding. So, let's hope this structure does what it needs to do."

Starting in 2013, the Saxton Creek Upgrade is a multi-year project designed to provide further protection to the Saxton area from flooding. It is now in its final phase.

After extreme weather in 2011 and 2013 caused significant flooding to properties near Saxton Fields, Nelson City Council embarked on a flood protection upgrade to the Saxton Creek.

Infrastructure Committee Chair Brian McGurk says the Saxton Creek upgrade will provide increased protection to residents and businesses in the Saxton area for decades to come.

"It's fantastic to see Tangaroa associated with this project, given its relationship with the sea and the Nelson coastline. The whole project, from the engineering to the artwork, is testament to the skills and hard work we have on hand in Nelson."

This segment of the creek can only handle a 1-in-5-year flood event. The upgrade will mean the area will be able to cater for a 1-in-100-year flood event. Without this vital work, we would not see the benefits of the work carried out in the earlier stages.

The project has received \$7.5 million of funding from Kānoa - Regional Economic Development & Investment Unit, which contributes towards projects that build more resilient river communities.

The Kānoa funding helped bring the project forward, creating new jobs for Nelsonians and providing a boost to local economies and social wellbeing following the impact of COVID-19.

With extreme weather events more likely to occur due to climate change, the Saxton Creek Upgrade is one of a number of infrastructure projects Council is working on to increase Nelson's stormwater capacity and resilience to heavy rainfall.



Isaac Andersen: artist. Photo: Virginia Woolf.

Environmental Grant Funding Open until Friday 4 March 2022

If you are a group or individual working to improve the health of Nelson's natural environment, you may be eligible for funding support through the Nelson City Council Environmental Grants scheme.

Priorities for the February 2022 grants round are:

- Community projects* to enhance biodiversity through pest animal control (e.g. rats, stoats, goats, possums)
- Projects that protect and restore Significant Natural Areas
- Projects that reduce erosion on farming and forestry land
- Projects that restore waterway margins

*Community projects are those that involve three or more landowners and/or involve public land.

If your project doesn't meet one or more of these priorities, or it involves work in a Nelson City Council Park or Reserve, please contact us to discuss your project before completing the application.

Funding is limited so be sure to apply before the 4 March deadline.

To find out more:



nelson.govt.nz/environmental-grants-scheme



nelson.nature@ncc.govt.nz



03 546 0200

Please remember to flush your taps

Although the health risk is small, the Ministry of Health recommends that you flush a mugful of water from your drinking water tap each morning, before use, to remove any metals that may have dissolved from the plumbing fittings.

Some plumbing fittings have the potential to allow minute traces of metals to accumulate in water which has been standing in the fittings for several hours.

This is recommended for all households, including those on public and private water supplies.

Saxton Field road named after former Richmond, Tasman and Nelson Mayor

The previously unnamed road through the Saxton Field Complex has been officially named Kerry Marshall Drive, in honour of former Mayor Kerry Marshall. An unveiling ceremony was held on 3 February 2022 to mark the occasion.

Having served as Mayor of Richmond for three years, Tasman for nine years and Nelson for three years, the road will serve as a fitting way to recognise Kerry's many years of service to the wider region.

The proposal to name the road came from Nelson Mayor Rachel Reese, Tasman Mayor Tim King and former Nelson MP Nick Smith in July 2020. Nelson City Council voted to approve the naming of the road in September 2021.

Family and friends of Kerry were joined by Nelson Deputy Mayor Judene Edgar, Tasman Mayor King, Nelson MP Rachel Boyack, Nick Smith, and members of Nelson and Tasman councils to remember Kerry's many contributions to the region and country.

Deputy Mayor Edgar said Saxton Field was the perfect location to recognise Kerry, as much of his work benefitted both Nelson and Tasman, and beyond.

"Kerry's was a life of community and public service," said Deputy Mayor Edgar.

"We have all benefitted from his tireless work, especially for the arts, sport and conservation, as well as his leadership of our communities."

Mayor King echoed Deputy Mayor Edgar's sentiments.

"We welcome the gesture as an appropriate memorial. A road linking the two districts reflects Kerry's time at the helm of both Councils and the joined-up development that occurred during his tenure in both offices."

Alongside his time as Mayor of Richmond, Tasman and Nelson, Kerry was also involved in civic life on a national scale.

He served as President of Local Government NZ, was Chair of the NZ Conservation Authority, Chair of the New Zealand Visitor Information Network, a member of the New Zealand Geographic Board, a trustee of the Cawthron Institute of Science and Technology, Chair of the New Zealand World of Wearable Art Development Trust and Chair of the Tasman Environmental Trust.

Kerry spent the last years of his life at Ernest Rutherford Retirement Village, enjoying walks through the Saxton grounds before his passing in March 2020.



Colleen Marshall with children Leighton and Emma



MEETINGS

Environment and Climate Committee	
9am	15 Feb
Hearings Panel - Other	
9am	16 Feb
Environment and Climate Committee - to Hear Submissions to Urban Environments Bylaw Review (if required)	
1pm	16 Feb
Council meeting	
9am	17 Feb
Strategic Development and Property Subcommittee	
at the conclusion of the Council meeting	17 Feb
Audit, Risk and Finance Subcommittee	
9am	22 Feb
Chief Executive Employment Committee - Rūma Whakatū	
2pm	22 Feb
Infrastructure Committee	
9am	24 Feb

Changes to meetings

Joint Shareholders Committee, previously advertised to take place on Monday, 14 February 2022, at Tasman District Council Chamber, will now take place on Tuesday, 15 February 2022 and will be held via Zoom

2pm 15 Feb

For a full list of meetings go to: nelson.govt.nz/meetings



To sign up for Our Nelson by email go to: facebook.com/nelsoncitycouncil

WHAT'S ON... at a Council venue near you



Kirby Lane

Kirby Fridays, every Friday night during summer, 4:30pm – 9:00pm
Rutherford Park

Go By Bike Day, Thursday 10 February, 7:00am – 9:00am

Founders Heritage Park

Founders Café/Songs at Sundown, Friday 11 February, 6:00pm – 8:00pm

Senior Summer Activities: Tai Chi for Seniors, Monday 14 February, 10:00am – 11:00am

Founders Café/Songs at Sundown, Friday 18 February, 6:00pm – 8:00pm

Founders Café/Songs at Sundown, Friday 25 February, 6:00pm – 8:00pm

Broadgreen Historic House

Secret Lives of Dresses Exhibition, Wednesday 9 February - Thursday 30 June, 10:30am – 4:30pm

Senior Summer Activities: Spin Poi in the Park, Tuesday 1 March, 10:00am – 11:00am

Weave your own Washcloth Workshop, Sunday 6 March, 10:00am – 4:00pm

Mini Hoop Embroidery Workshop, Sunday 6 March, 10:00am – 4:00pm

Isel House and Park

Isel Twilight Takeaway Market, every Thursday night from 30th September – Thursday 14th April 4:30pm

Nelson Public Libraries:

Elma Turner Library

Hours:

Monday, Tuesday, Thursday, Friday: 9:30am — 6:00pm

Wednesday: 10:00am – 6:00pm

Saturday: 10:00am — 4:00pm

Sunday: 1:00pm — 4:00pm

Small Time at the Elma Turner Library, every Monday & Wednesday, 10:30am – 11:00am

Story Time at the Elma Turner Library, every Tuesday, 10:30am – 11:00am

Shared Reading for Wellbeing, every Tuesday, 11:30am – 1:00pm

Device Advice, every Tuesday & Thursday, 2:00pm – 3:00pm

STEM writers, every second and fourth Tuesday of the month 1:00pm – 3:00pm

Tea & Tales – Dementia Friendly Book Group, every Wednesday, 11:00am – 12:00pm

Library Knitters, every Thursday, 10:00am – 12:00pm

Tea & Talk, Friday 11 February, 10:00am – 12:00pm

Justices of the Peace, every Saturday 10:00am – 12:00pm

Library Book Sale, Wednesday 9 & Thursday 10 February

Digital Learning – Navigating Your Device, Thursday 17 February, 9:30am – 11:00am

Book Launch – The Freedom of Birds by Stephanie Parkyn, Saturday 19 February, 2:00pm – 3:00pm

Community Kōrero – Older and Bolder, Sunday 20 February, 2:00pm – 3:00pm

Ebook and audiobooks, Thursday 24 February, 9:30am – 11:00am

Live Music Series – Bossa Via, Sunday 27 February, 2:00pm – 2:30pm

Digital Learning – Online Safety, Thursday 3 March, 9:30am – 11:00am

Library Book Sale, Friday 4 – Thursday 10 March

Author Talk – Chris Stuart, Sunday 6 March, 2:00pm – 3:00pm

Bookchat, Tuesday 8 March, 10:30am – 11:30am

Nightingale Library Memorial.

Hours:

Monday, Wednesday, Friday: 1:00pm — 4:30 pm

Tuesday, Thursday: 10:00am – 2:00pm

Saturday: Closed

Sunday: 10:00am — 2:00pm

Nellie Knitters, Every Monday, 1:30pm – 3:30pm

Stoke Library

Hours:

Monday, Tuesday, Thursday, Friday: 9:30am — 5:30 pm

Wednesday: 10:00am – 5:30pm

Saturday: 10:00am — 1:00pm

Sunday: Closed

Museums and Galleries:

The Suter Art Gallery & Theatre

Hours: 9:30am – 4:30pm Daily

Fire & Earth: Contemporary Ceramics from the Top of the South, 13 November – 13 February

Kiss Me, Hardy! (but not like that), 27 November – 27 February

TEDxNelson, Saturday 5 March, 9:00am – 4:00pm

Refinery ArtSpace

Hours: 10:00am – 5:00pm, Monday to Friday & 10:00am – 2:00pm, Saturday

Wāhine, Monday 24 January – Saturday 19 February

Lotus Eaters Lullaby Lee Woodman, Saturday 22 January - Saturday 19 February

A Glimpse of Ancient Art – Malsha Ariyawansa, Saturday 22 January - Saturday 19 February

RAW 22 – work outside the edge, Saturday 19 February - Saturday 19 March

Nelson Provincial Museum

Hours: 10:00 – 5:00pm Weekdays, 10:00am – 4:30pm Weekends & Public Holidays

Dinosaur rEvolution – Secrets of Survival, Tuesday 19th October – Sunday 27th March

Event: Dinosaur rEvolution: Low-Sensory Hour, every Thursday & Saturday until 26 March, 9:00am – 10:00am

Event: The Dinosaurs that once called Nelson home – Talk by Dr Greg Browne, Wednesday 9 February, 5:30pm – 6:30pm

Music Mix – A free music experience for all

Saturday 12 February, 11am – 12pm

Victory Community Centre

