

# OUR NELSON



## TŌ TĀTOU WHAKATŪ



Issue 81 • 16 October 2019

Keep up to date with the latest news from Nelson City Council

### Create a banner and win!

The deadline has been extended until Friday 15 November for artists and designers from the Nelson region to submit banner design proposals for the exciting new FlagTrax project. A new street banner system has been installed around the city and it means the banners can easily be swapped in and out at ground level. The aim is to brighten up the city streets with 80 uniquely designed banners for display between major events, which will add diversity and colour, to spectacularly showcase local art in our Smart Little City. Each selected artist will receive \$300 for allowing Nelson City Council to use their image for this purpose. For further details go to:

[acn.org.nz/art-flags-project.html](http://acn.org.nz/art-flags-project.html)



# Local Elections preliminary result

The preliminary result for the Nelson City Council elections held on Saturday 12 October is as follows.

Mayoralty	Votes Received
REESE, Rachel <i>Independent</i>	5,649
COURTNEY, Mel	4,061
DAHLBERG, Bill <i>Mayoralty Only</i>	3,739
SKINNER, Tim	3,638
WARD, Mike	1,562
NAHMIAS, Avner <i>Independent</i>	279
WAKELIN, John <i>Patriotic</i>	182
INFORMAL	51
BLANK VOTING PAPERS	358

Council – At Large (12 vacancies)	Votes Received
SANSON, Rachel	9,957
LAWREY, Matt	9,507
SKINNER, Tim	9,369
O'NEILL-STEVENS, Rohan	9,090
MCGURK, Brian <i>Labour Party</i>	8,618
COURTNEY, Mel	8,417
NOONAN, Gaile	7,948
EDGAR, Judene	7,942
BOWATER, Yvonne <i>Passionate about Nelson Community</i>	7,749
FULTON, Kate	7,728

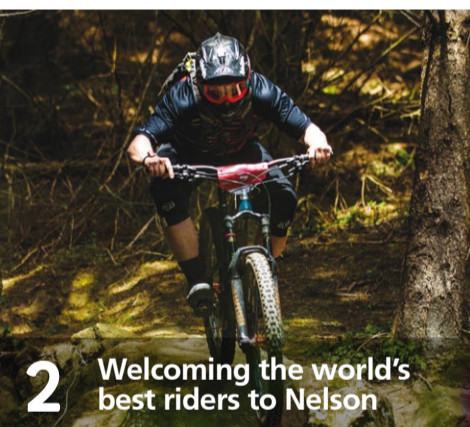
BRAND, Trudie <i>A strong voice for Nelson</i>	7,133
RAINEY, Pete	7,115
RUTLEDGE, Mike <i>Committed to Nelson</i>	6,638
CHRISTIAN, Dennis	6,323
WARD, Mike	6,110
ROLLO, Campbell	5,734
O'BRIEN, Graeme <i>Putting ratepayers needs first</i>	5,297
BARKER, Ian	5,042
SHARMA, Anjela	4,707
MORRIS, Harry (Howard) <i>People not Party</i>	4,300
GOLDSMITH, Bernie <i>Independent</i>	4,117
KING, Luke <i>Committed to work for you</i>	3,797
COTTERILL, Alastair	2,869
VIJ, Virat <i>For Nelson - Present and Future</i>	2,489
CHAMBERS, Allen <i>Stop the nonsense</i>	2,403
MITCHELL, Dai	2,127
KAVANAGH, Robbie <i>patience, humility, gratitude</i>	1,788

DALY-KEENAN, Sunny <i>Putting people first</i>	1,666
DAIKEE, Glen	1,591
LINDUP, Stephen <i>Vote for me, for a better Nelson</i>	1,513
HOULISTON, Owen J.	1,417
INFORMAL	69
BLANK VOTING PAPERS	160

The voter return was 51.83%, being 19,519 votes. The preliminary result does not include special votes. The outcome of these elections may change once all votes have been counted.

\*The final result will be available after this issue of Our Nelson has gone to print, please go to Council's Facebook page or website for details.

[nelson.govt.nz/elections-2019](http://nelson.govt.nz/elections-2019)



2 Welcoming the world's best riders to Nelson



5 Maitai/Mahitahi River Game pull-out inside!



10 Easier waste-free events with Wash Against Waste





## History and tradition combine to tell our Christmas story

Nelson's Santa Parade is 19 years old, and over that time it has morphed and evolved to remain one of the highlights of our City's festive season.

This year the Parade is in new hands, those of experienced event managers Tom Smythe and Claire McLean from EBTAC Ltd, who are excited to continue the traditions that everyone loves, while keeping the event fresh, fun and uniquely Nelson.

The Nelson Santa Trust, which has given so much to this event over its many years at the helm, relies heavily on the energy and skills of the Rutherford Rotary, and both parties feel that now is a good time to hand the organising of the Parade over to Tom and Claire.

Even though the Trust is stepping down from event organisation duties, its team of experienced volunteers have offered full support to Tom and Claire. "We really like hearing from the Parade veterans, whose decades of dedication has made the event what it is... magic," Claire says.

Nelson's population is made up of well over 30 different cultural groups from around the world, giving the new organisers the

opportunity to present a rich and vibrant Christmas story that reflects who we are as a community. The 2019 Parade promises to feature the big white-bearded man in red clothing, alongside our Māori traditions, woven together with aspects of the global Christmas story that for some will be new and exciting.

"The Santa Parade is a centrepiece of the Nelson events calendar and brings the community together in the heart of our Smart Little City for a wonderful Christmas celebration every year," says Nelson City Council Community Services Group Manager Roger Ball.

"The Trust and all the volunteers have worked tirelessly over the past two decades and have brought a lot of fun and happiness to our city, delivering a wonderful family event. I'm excited to see what the future holds for the Santa Parade, and have every confidence it will continue to flourish and evolve under this year's new management."

## Be part of the 2019 Nelson Santa Parade and win!



The Nelson Santa Parade is on Sunday 1 December 2019 from 3-6pm and float entries are now open, but hurry as registrations close soon.

This year there is a float competition for schools with a first prize of \$1000 for the best float, so come and make some noise for your favourite.

The Parade is a fun-filled family event for all of Nelson to enjoy together and this year's event will feature some of Nelson's renowned and award-winning artists, musicians, performers and community groups

as they accompany Santa's sleigh up Trafalgar St in the CBD. There will also be spot prizes for bringing your letters to Santa and getting into the Christmas spirit.

Come on Nelson, get involved! Registrations close 30 October 2019. For further details go to the Nelson Santa Parade Facebook page or email [info@ebtac.biz](mailto:info@ebtac.biz)

## Calling Nelson Heritage Festival event hosts!

Nelson City Council is once again putting the call out to Heritage lovers to celebrate their favourite Nelson Heritage stories in the 2020 Nelson Heritage Festival.

Applications are now open for groups or individuals who want to run an event as part of next year's festival programme.

The 2020 Nelson Heritage Festival runs throughout April and is Nelson City Council's 10th year of Heritage celebrations, starting with Heritage Week back in 2010.

The Heritage Festival event hosts are the backbone of the festival, bringing their passion, and specialist knowledge to the program and organising all the practicalities of their own events.

Council carries out extensive promotion and marketing of the festival, which has grown significantly over the last two years. Estimated attendance numbers grew last year from 4349 in 2018 to 11,981 in 2019, with both years receiving national media coverage. Younger audiences have also grown significantly, with a doubling of attendees who were under 35 years of age for the 2019 Festival.

Council also provides an Event Host Grant Scheme to provide hosts with match funding to help enable their events to happen. This \$20,000 fund was significantly oversubscribed last year, so the advice is to get planning your events nice and early.

Applications for the 2020 Nelson Heritage Festival close on 23 December 2019.

To register your event and apply for funding, go to Council's website. For further details, please contact Tom Ransom on [tom.ransom@ncc.govt.nz](mailto:tom.ransom@ncc.govt.nz) or call 03 546 0331.

[nelson.govt.nz/heritage-festival](http://nelson.govt.nz/heritage-festival)

## Welcoming the world's best riders to Nelson

The Aorere Enduro is coming to Nelson, and along with it 200 of some of the fastest mountain bikers in the world.

Between 26-28 October 2019 riders will be taking on a variety of Nelson's world class mountain bike trails, as they bid to win the first round of the Enduro World Series Asia-Pacific championship.



Photo © Digby Shaw Photography

Hosted by the Nelson Mountain Bike Club with support from Nelson City Council, Ngati Koata and a variety of corporate sponsors, the race offers a variety of opportunities for spectators to get out and cheer on their favourites. The club will be announcing the race course on Monday 21 October, along with a spectator guide that shows the best places to watch the race unfold. On Monday 28 October there will be a Krankin Kids fun day at the event village, Maitai Cricket Ground, with a range of entertainment for everyone to enjoy. Keep an eye on [aorere.nz](http://aorere.nz) or the Aorere Enduro Facebook page for more information.

[aorere.nz](http://aorere.nz)

# Looking after this Land: High on a Hill



**Healthy Streams**  
From the Mountains to the Sea  
ki uta ki tai

The first in a series of videos about native habitat restoration in Nelson highlights the hard work undertaken by landowners John and Fiona Price, who have created a rich native forest on their hillside farm north of Nelson.

For John and Fiona Price, seeing how tall the rimu trees they planted 21 years ago on their 3ha hillside block have grown is a source of great satisfaction.

"When we looked at this block all those years ago, it was all grazed by cattle with patches of gorse," says John. "We pushed the fences out around the house and were inspired by the way the whiteywood came away once it was protected from grazing."

That quick growth encouraged them to start planting more natives, assisted by advice from Nelson City Council and from locals Robert and Jan Fryer, who helped with advice and trees from their nursery. The liquid amber, pin oaks and elms planted in the middle paddock are a colourful reminder of the early days of planting to stop erosion on the steeper slopes.

But first they had to get to grips with the fencing to keep wildlife out and farmed animals in, and to protect their new young trees from unwanted browsing. A neighbouring farmer taught them how to build a stock proof fence, and offered the use of his bulldozer, which sped up the track building considerably. "It was good fun – and then we developed the smaller bush tracks ourselves."

They know now that they could have used the gorse that was on the property as a nurse crop, but expended much energy in the early days clearing it away – as well as dealing with old man's beard and blackberry which need ongoing vigilance even today.

The areas of native bush have grown and developed along with John and Fiona's knowledge and expertise. Fiona says they've made the most of community, neighbourly and Council advice along the way.

"It's really hard work but the rewards are in the environmental benefits we've seen – the bird song,

seeing the young trees come away."

John says that they've come to realise how important it is to plant the right tree for the right place, and that has influenced their choice of trees on their steep sided land.

"We're on hard clay and in some places its solid rock. The trees don't mind the clay but its hard work for the hole-digger! And then we have to get water to new plants. We put kanuka on the drier faces as it regenerates pretty fast. Manuka grows ok in the wetter spots."

"We've used tree lucerne as a pioneer plant and nitrogen fixer, and it encourages native pigeons." Kererū are known for their ability to spread the seed of larger podocarp trees, so their presence helps to support forest regeneration.

Pittosporum do well here and where larger patches of bush have grown up around the stream, tree ferns are well established. Whilst John and Fiona mostly grow local natives there are also some exotics like mountain cedar and a big kauri tree, as well as a few pockets of rarer species which are carefully managed.

Kahikatea and beech trees are self-seeding on the property which is a good sign. As well as being the host plant for beech dew fungus – which provide food for many of our birds and insects, NZ beech species enjoy a mutually beneficial relationship with a group of fungi known as mycorrhizae. Living on the tree roots, the fungi take sugars while in return the beech tree absorbs minerals, which the fungus has collected from the surrounding soil.

"Its really good to know how the trees and fungi are working together – and we've recently found out that kanuka and manuka have a similar relationship with fungi."

They work hard to keep the pests at bay – using bait stations for rats and stoats.

"The native birds are coming back, we've had

weka chicks in the house!" Bellbirds and tuis are a common sight (and sound) in the garden.

John and Fiona's next project is planting along an ephemeral (seasonal) stream. They have a small flock of friendly sheep that graze the un-planted pasture, and ongoing work with new plantings plus looking after the established patches.

"We are much more aware now of what we can achieve. We're concerned about the future of the planet – our daughters are supportive and help with the planting. We know what we're doing will help support the work being done at the Brook Waimarama Sanctuary, and to improve the health of the Wakapuaka River. We all benefit from that."

You can see the full video at:

[nelson.govt.nz/looking-after-this-land](https://nelson.govt.nz/looking-after-this-land)



## Pear trees donated in recognition of 200 fruitful years of history

The Nelson branch of the New Zealand Tree Crops Association has gifted two pear trees of historic significance to the Nelson Tasman community this month.

These young trees are notable because they originate from the country's first recorded orchard in Kerikeri, and are grafted with scion wood taken from a 200-year-old tree. They were donated to both the Nelson City and Tasman District Councils, and planted in accessible public

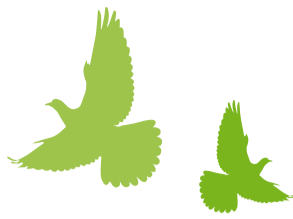
spaces, forming part of the councils' 'Edible Walks' initiative, a network linking open orchard areas, walking routes and significant heritage attractions around the region.

Nelson's tree was planted in Branford Park by Carolyn Mackay from the Nelson branch of the New Zealand Tree Crops Association.

There are 40 parks in Nelson with fruit trees in them, including apples, feijoas, figs, hazelnuts, olives, pears, and persimmons. Maps for some edible walks are available at:

[nelson.govt.nz](https://nelson.govt.nz)

# Kererū counters on the job



This year's Great Kererū Count saw Nelson's citizen scientists proving their worth as kererū lovers and nature observers.

Per head of population, Nelson's kererū counters recorded 3.6 times more observations and 2.8 times more kererū seen compared to the national average. Go Nelson!

Although nationally observations were down (6800 compared to 8500 last year), Nelson bucked the trend with 282 observations (up from 196 in 2018) and a total number of 456 kererū counted (up from 396 in 2018). This represents a 44% increase of records compared to last year, so Nelson observers can be congratulated on their hard work.

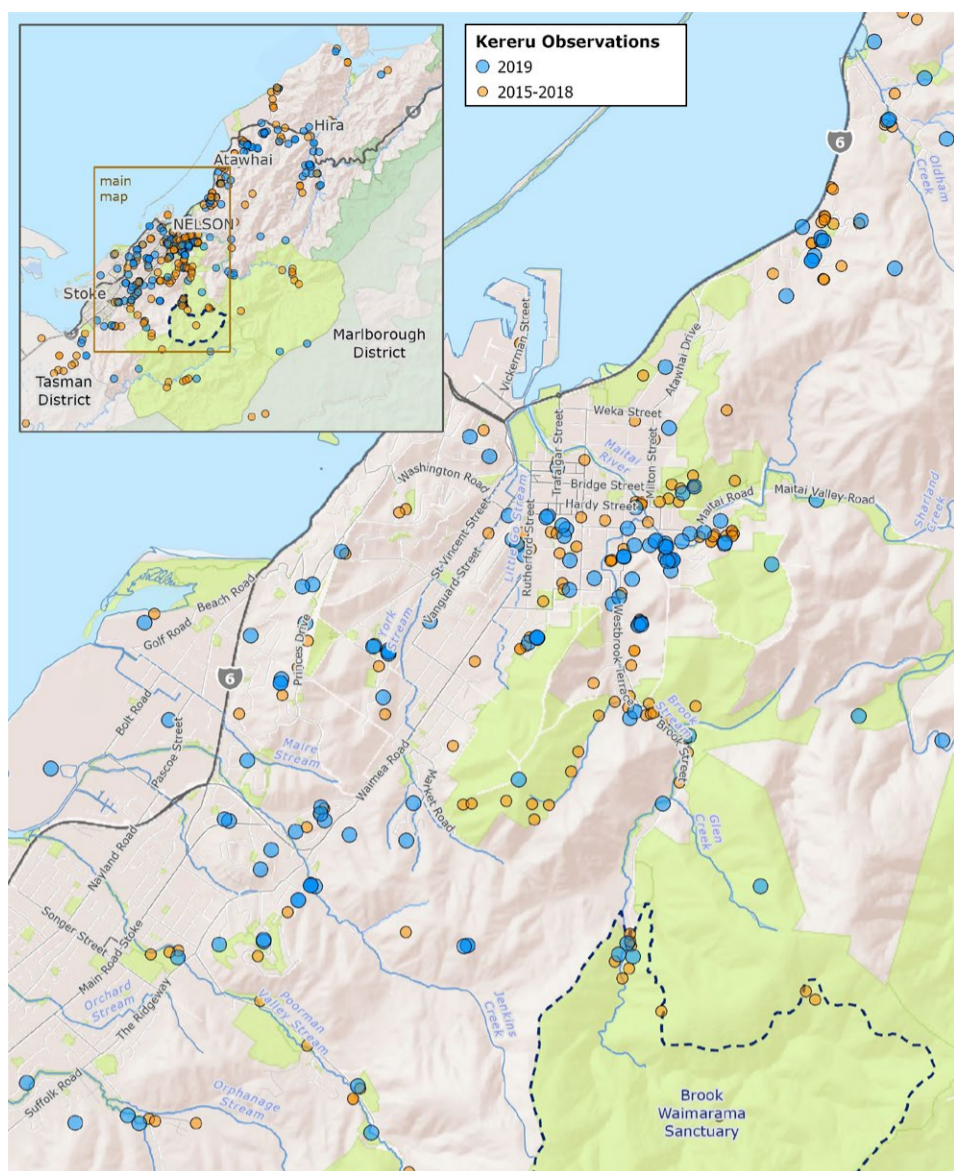
And whilst more kererū were seen in Nelson, the number seen per observation was down slightly with an average of 1.6 kererū per observation this year compared to just over 2.0 last year. This is consistent with national results and could be because we've had a bumper fruiting season in our native forests, so kererū were feeding more

in deep forest this year than in rural/urban areas.

Tony Stoddard, coordinator of the Great Kererū Count and Director of Kererū Discovery, says that kererū are able to fly up to 70km in a single day, and so lower numbers being reported in towns and gardens may just mean that kererū are making the most of their natural forest food sources.

"Kererū will go out of their way to follow their favourite foods. Kererū feeding on native forest fruit play a crucial role in dispersing seeds of large trees like tawa, taraire, hinau and miro – this is why they are known as gardeners-of-the-sky."

The data from the count helps us to build up a picture of how kererū are doing in Nelson and is part of measuring change over time as wildlife responds to predator control and habitat restoration in Nelson's rural and urban areas.



# New Trustees appointed to the Bishop Suter Trust

There will be two new faces bringing their passion for art to the Bishop Suter Trust for the next three years.

Nelson City Council and the Bishop Suter Trust are pleased to announce the appointments of Judy Finn and Rebecca Mason and the re-appointment of Margaret Soderberg to the Bishop Suter Trust until 31 October 2022.

Among other things, the Bishop Suter Trust manages and operates The Suter Art Gallery Te Aratoi o Whakatū which recently celebrated its 120th birthday and three years

since the opening of its redeveloped facilities. More than 140,000 people passed through the doors of The Suter Art Gallery in the past year, illustrating the success of the redevelopment.

The Suter is a charitable trust, which is not owned by Council, although as a Council Controlled Organisation, Council appoints more than 50% of the board members.



# Have your say on how Saxton Field is managed

Saxton Field is your public space, and as part of our planning for the future we are reviewing how the facility is managed.

The way we manage Saxton Field was last reviewed in 2008, so it's time we took another look to make sure our management plan is still fit for purpose. This is your chance to have your say.

We have prepared a short questionnaire where you can let us know your preferences for the future development and management of the facility, give us an idea of how well we are delivering services and register for further consultation as the plan is drafted.

Our review of the Saxton Field Reserves Management Plan will follow these steps:

- **October–December 2019:** Gather public feedback to inform a first draft
- **May–June 2020:** Draft reserve management plan open for public submissions
- **July/August 2020:** Hearings and deliberations on the draft plan
- **October 2020:** Final plan adopted by Joint Committee of Nelson City and Tasman District Councils.

For details please go to:

[our.nelson.govt.nz](http://our.nelson.govt.nz)



# AGAINST THE FLOW

The Maitai / Mahitahi River Game

**Your very own copy to play at home  
with your family and friends**

Cut out the chance cards and counters (glue them onto spare card to make stronger if desired), find yourself a dice and you're all set to play!

# AGAINST THE FLOW

The Maitai / Mahitahi River Game

CHANGE



FINISH

TINO PAI

40

39

38

37

36

35

34

33

32

31

30

29

28

27

26

25

20

19

18

17

FOOD STOP  
Stonefly

FOOD STOP  
Uncased Caddis

FOOD STOP  
Cased Caddis

FOOD STOP  
Mayfly



Maitai Dam

Maitai North Branch



Maitai South Branch



Poleford Bridge



Jack's Poolock



Maitai Camp



Sharlana Creek

Dun Mountain Trail



**FOOD STOP**  
Dobsonfly Larvae

**FOOD STOP**  
Backswimmer

**FOOD STOP**  
Midge Larvae



**OBJECTIVE:** Pretend your counter is a fish and try to move it safely to the top of the river.

**RULES:** Start at the Haven. Your fish is swimming upstream. If you land on an algae covered rock, pick up a 'Chance' card and read it out loud. If you throw a 6, you get another turn straight away (without picking up a chance card if you landed on an algae rock). Look out for food stops along the way so your fish can refuel! The first person to reach the top of the Maitai South Branch wins. Ka pai!

**Recommended for 2 – 6 people.**

Developed by:  
**Friends of the Maitai**  
*The Maitai Society, Nelson City Council, Friends of the Maitai*

Supported by:  
**Nelson City Council**  
*te kaunihera o whakatū*

**PROJECT MAITAI**  
MAHITAI

Images courtesy of: Gail Hampshire (Backswimmer), NIWA (Dobsonfly, Dobsonfly Larvae, Stonefly, Stonefly, Cased Caddis, Uncased Caddis, Mayfly), Stephen Moore (Redfin Bully, Kāaro), Tony Eldon (Inanga, Torrentfish, Banded Kokopu), Rohan Wells (Tuna).

# DID YOU KNOW?

You can tell the water quality in a stream by the kind of stream bugs living there. Some bugs are very sensitive and you only find them in places where the water is healthy. Others like snails and worms are not so picky and you can find them just about everywhere...

Some native fish need to migrate between the sea and river headwaters to complete their life cycle. If they can't get up or down stream they can't reproduce.

Sewage leaks and stormwater inputs reduce diversity and abundance of stream life, while posing risks to human health and reducing the Mauri of the Awa Maitai.

Concreted or heavily rock walled stream-banks reduce shady vegetation and leave fish without nooks and crannies to hide in. They can also reduce natural riffles (oxygenated parts of the stream where life is more likely to be found) and pools ("rest-areas" for fish taking a break from swimming against flows).

Many different kinds of fish and animals live in the Maitai / Mahitahi river such as; inanga, smelt, yellow eyed mullet, longfin eels, koura, torrentfish, kōaro, and redfin, common and giant bullies!

Whitebait is made up of juvenile Inanga, Kōaro, Banded Kōkopu, Shortjaw Kōkopu and Giant Kōkopu. They are part of a group called galaxiids. The larvae of these species are born in freshwater, swept out to sea with the tide and return to rivers and streams in spring as whitebait. The most common species is the Inanga.

## KNOW YOUR STREAM CRITTERS!

### WATERBUGS/MACROINVERTEBRATES – kai for fish and indicators of water quality

#### TOUGH



- » **Backswimmer**  
Often found in near-coastal, disturbed sections of rivers and creeks. Tolerant and able to flourish in silty, warm, polluted water with low flows (lack of oxygen).
- » **Purse and wood cased caddis**



- » **Midge Larvae**  
They are often abundant in unshaded, warm, high nutrient streams with high levels of algal growth.
- » **Worms and snails**
- » **Beetle, sandfly larvae**

#### AVERAGE



- » **Dobsonfly Larvae (or toe-biter)**  
Common in the Maitai as they prefer a cobblestone riverbed. Largest of the water bugs and only found in New Zealand. Looks like a centipede with many legs – the first three are legs and the rest are its gills!



- » **Cased Caddis**  
At least 150 types, with varying degrees of sensitivity to water quality. Cases are formed from a secreted fluid that hardens, many encase themselves with a combination of this and sand to protect their soft body.



- » **Flat Common Mayfly**  
Visible gills along sides of abdomen, three thin tail parts. Quick swimmers! Memory trick to remember mayflies – remember 3 tail parts and 3 letters in 'May'.



- » **Uncased Caddis**  
Highest sensitivity of Caddis larvae, usually green, sometimes whitish/pale brown. Round segmented parts to a caterpillar-like body. To identify it note the visible head and tail. If viewed with a magnifying glass you can see the tail is actually the back legs! Moves in flicking type of motion.

#### SENSITIVE



- » **Stonefly**  
Stonefly nymphs have two tail strands. Only the green stonefly has gills along the sides of its body – many have gills between the tails. Stoneflies are most common in fast-flowing, stony-bed streams with cool water. They are an indication of good habitat and water quality conditions, especially if other mayfly or stonefly groups are there.

### OTHER CRITTERS



- » **Koura – freshwater crayfish**  
They dig and fossick, making kai available to other critters in the stream. Not especially sensitive or tolerant, are not noted as indicators of stream health, but are essential and important part of food web. Slow growing, they eat snails and mayflies.



- » **Tuna – longfin eels**  
Only found in New Zealand (endemic) but makes long journey back to birthplace to spawn – the Tonga Trench in the Pacific Ocean. Females get large after approximately 100 yrs growth and swell when ready to migrate for final spawning. If they can't make it back to the ocean they can't spawn (release their eggs)! We have to make sure our rivers have no barriers and remain connected to the sea if the eels are to survive.



# CHANCE CARDS & COUNTERS

Cut out these chance cards and counters (glue them onto spare card to make stronger if desired), find yourself a dice and you're all set to play!



Cut here

**KA PAI!**

The local school has created better habitat for you to lay your eggs.

Go forward 3.

**KA PAI!**

A fence has been erected to prevent livestock from entering the river, so the water stays clean.

Go forward 3.

**KA PAI!**

You are chased by a hungry shag but luckily you escape. Hopefully the shag finds something else to eat (they are native taonga too).

Go forward 2.

**KA PAI!**

People have planted the banks with native trees and shrubs. You have shade and somewhere to hide.

Go forward 5.

**KA PAI!**

A wetland has been created to stop sediments and harmful chemicals from entering the river.

Go forward 4.

**KA PAI!**

You have escaped from a whitebaiter's net.

Go forward 2.

**KA PAI!**

The people of Nelson are working together to make the Maitai/Mahitahi River healthy.

Go forward 6.

**KA PAI!**

Native trees have been planted, making a barrier between the river and the pine forests to stop harmful sediment from entering the river.

Go forward 5.

**KA PAI!**

A fish friendly culvert has been built. You can swim through it easily.

Go forward 4.

**AUE!**

The runoff from a farm has increased harmful nutrients in the water.

Go back 4.

**AUE!**

The weather has been hot and dry and the water has become too warm to swim in.

Go back 6.

**AUE!**

Paint has washed down a stormwater drain, making you feel very unwell.

Go back 5.

**AUE!**

Cattle have trampled down the bank, destroying the stream-side vegetation which shades the water.

Go back 3.

**AUE!**

Tree clearing has caused the soil to wash into the river and cover the rocks with sediment. The river bed has become clogged.

Go back 4.

**AUE!**

Garden waste and lawn clippings have been tipped into the river. Oxygen levels are depleted, making it hard for you to breathe.

Go back 5.

**AUE!**

Someone is washing their car and detergent has entered the river through a stormwater drain. The detergent makes you feel very unwell.

Go back 5.

**AUE!**

A septic tank has leaked into the river and polluted the water with bacteria, viruses and chemicals. Yuck!

Go back 6.

**AUE!**

Rain has washed pesticides into the river killing food sources. You go hungry.

Go back 3.

Cut here

# Waste not – want not!

We're asking everyone in Nelson to help us reduce our greenhouse gas emissions by putting 10% less waste into our landfill by 2030.

Nelson City Council has now adopted the Joint Waste Management and Minimisation Plan with Tasman District Council, and as part of this plan we now have a goal of a 10% reduction in waste per person. If we're going to achieve this by 2030, we'll all need to be more careful about how much waste we produce and what we do with it.

This plan is part of the Councils' efforts to address the factors attributing to climate change, by controlling carbon emissions from landfill. Food waste in landfill is one of the main emitters of greenhouse gases, so an easy way to help address this is to reduce your food waste.

If you're wondering what the alternatives are for getting rid of your food waste, the best solution is to compost it. Council can help you get set up for composting through a compost subsidy from one of our approved local retailers.

The subsidy is usually \$20 per household, this increases to \$30 per household during Kickstart Compost month in November, so it's a good time to give this a go. Around 90kg of food waste per person is thrown away each year so this is a great place to start.

To find out more about where you can get the compost subsidy, and for advice and a video on how to compost for beginners, go to [nelson.govt.nz/compost](http://nelson.govt.nz/compost).

Another way to avoid food waste is through good planning and shopping – Love Food Hate Waste has seasonal recipe books with shopping lists to help, that will save you time and money, as well as reducing your food waste. You can download them at [lovefoodhatewaste.co.nz/easy-choice-meal-planner/](http://lovefoodhatewaste.co.nz/easy-choice-meal-planner/)

[nelson.govt.nz/compost](http://nelson.govt.nz/compost)



# Goddess of Flight finds new home

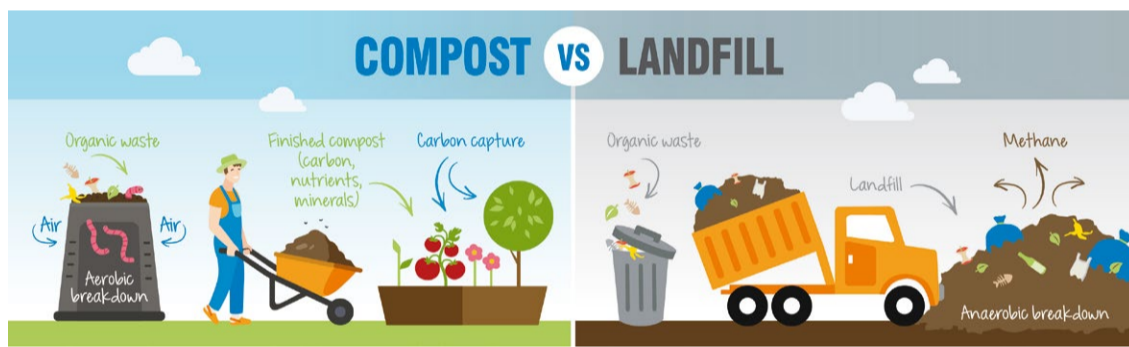
Fiona Sutherland's sculpture, Goddess of Flight, has a new home at Saxton Field.

The sculpture was donated to Nelson City Council when the Nelson Airport was redeveloped. The new location was recommended by Council's Art Selection Panel and following conversations with iwi. Saxton Field was the site of Nelson's first airport, initiated by the Aero Club in 1932, so it is a suitable fit for the artwork.

The design as a whole is a celebration of visitors flying in and out of Nelson. The sculpture depicts a girl standing on boulders representing the Boulder Bank, the fish on her skirt give recognition to the role of the fishing industry in Nelson. The skirt is also representative of a piece of Wearable Art which was founded in Nelson and still has its home in the city with the WOW museum.

The fish on the bottom of the skirt morph into flying fish towards the top and rise to a godwit which the goddess is releasing to the North – symbolic of the migrating Godwits which make an annual pilgrimage to Nelson from Alaska and then return.

Take a stroll around Saxton Field and enjoy the Goddess of Flight in its new location alongside the pedestrian bridge at the top of Saxton Creek pond, between Daelyn Drive and Saxton Oval.



# Easier waste-free events with Wash Against Waste

Council funding is helping to reduce waste at events using a new mobile Wash Against Waste station.

The Wash Against Waste trailer, run by Waste No More Nelson, provides plates, bowls and cutlery, which is supplied to food vendors on the day of the event. Customers return the crockery to the trailer for washing and sterilising, and it then goes back to the food vendors for re-use.

As well as reducing single use packaging and waste going to landfill, the Wash Against Waste trailer helps reduce the volumes of waste going through our recycling facilities, thus reducing energy use and labour.

For more information about using the trailer at events visit:

[nelson.govt.nz/wash-against-waste](http://nelson.govt.nz/wash-against-waste)



# Water meter reading reminder

The residential water meter reading round is on. Please ensure that the area surrounding, and the meter box itself are clear and easily accessible for the meter readers to locate and read.

The meter readers will be wearing vests labelled "Water Meter Reader" and are allowed to read the meters between 7am and 7pm seven days a week, including Sundays and public holidays. They also carry ID with them, which you can ask to see.

If your meter is not easily accessible for the readers, e.g. behind a locked gate or if you have dogs, please call our Contractor's help desk 027 286 7337, so that suitable arrangements can be made to have the meter read.

All water used through the meter is charged at \$2.137 per cubic metre, including GST.

Statements will generally be posted out usually within two weeks of the meter being read. They will be due for payment on 20 December 2019.

# Nelson's 25th Arts Festival opens on Friday for 11 days of non-stop world-class entertainment

Here are some quick pointers to the absolute must-sees across music and theatre.

## Music

The Festival has a particularly strong line-up of music this year, and it's all about feeling good. Hailing from the USA's Deep South, **Greg Copeland** brings his own blend of funk, soul and blues, flanked by Steve 'Guitar' Gilles on steel guitar and blues harp. If you like your music with a bit more Celtic pace, then try the incredible eight-piece **Shooglenifty** with their infectious fusion of traditional and contemporary Scottish music with world beats. For a Saturday afternoon of some rockin' coolness, head to Neudorf Vinyards for **Mighty Duke & The Lords**. These guys will crank the feel-good vibes to the max with their retro mischief "trop pop" driven by a belting horn section. And to round off the festival, come along to Caravāna Sun and their laid-back hyped-up summer beach vibes – these guys will definitely have your Labour Weekend buzzing to the max.

## Theatre

The theatre programme ranges from the ridiculous to the sublime, via some master storytelling. For some high-energy non-stop hilarity about a robber bailed up in a pie shop, NZ play **Mr Red Light** is the perfect fit. For a great story about one of our most important photographers of the 60s and 70s, Martine Baanvinger's **Aperture** brings Ans Westra's work to the fore, focussing on her controversial school journal *Washday* at the Pa. And for a venture into the more philosophical side of things, don't miss **Portraits in Motion's** gentle investigation into those everyday fleeting moments with German traveller Volker Gerling.

## Circus

The Festival always features one circus show, and this year's is a cracker. Come and marvel at **The WonderWombs'** super-fit team of seven athletic performers for their acrobatics, balance, strength and gravity-defying agility.

[nelsonartsfestival.nz](http://nelsonartsfestival.nz)

## What's in a name?

Huntaway Ridge is now called Huntaway Close.

Council initially approved the name Huntaway Ridge in 2017, but when LINZ (Land Information New Zealand) got the final application for approval of the road name in June this year,

they said that "Ridge" does not meet the current road naming criteria. So it had to go back to the Nelson City Council Hearings Panel recently for approval of a new street type – the name has now been changed to Huntaway Close because it is a cul-de-sac. A close is a short enclosed roadway, usually surrounded by buildings.

## Charting the past at Broadgreen Historic House

The journey took eight months and they endured mutinies, sickness and all the perils of a 19th century sea voyage from England to New Zealand.

The Buxtons, of Buxton Square fame, arrived in Nelson in 1851 and set up shop where Farmers sits now. The Buxtons, along with other early Nelsonian immigrants' experiences are explored in a new exhibition, "A Passage to Nelson: Unpacking the Past" at Broadgreen Historic House.

In a special new collaboration with NMIT – International Maritime Institute of New Zealand, Captain Phil Pinniger has charted the exact route the Buxtons took across the world on their eventful journey, using old records of their voyage and pinpointing where key events took place. This map is now on display.

A visit to Broadgreen is a step back in time, with the house set up in the 19th century. The new display, "A Passage to Nelson" delves into what early immigrants brought with them and their arrival in Nelson. As with all our exhibitions at Broadgreen Historic House, there is a special focus on the costumes and textiles, showcasing clothing from the 1800s.

The exhibition shows off an incredible textile and costume collection at Broadgreen, and we

like to bring out something special for every new display at the Nelson City Council venue.

All of the rooms have something different for visitors to view, with the dining room not only showing garments of the period, but also other textiles and china packed in wool, just as they would have been for a safe passage to Nelson.

The exhibition, at Broadgreen Historic House runs until May 2020.



### Event details

**What:** A Passage to Nelson: Unpacking the Past  
**Where:** Broadgreen Historic House  
**When:** Daily 10.30am–4.30pm until May 2020

## ROAD CLOSURES

### Proposed closures

**Applicant:** SMC Events Ltd  
**Event:** Sanitarium Weet-Bix Kids TRYathlon  
**Location:** Tahunanui Sports Grounds  
**Date and time:** Sunday 8 March 2020, 6am–12.30pm

**Feedback date for proposed closures:**  
**Wednesday 30 October 2019**

Email: [enquiries@ncc.govt.nz](mailto:enquiries@ncc.govt.nz)  
Post: Nelson City Council, PO Box 645, Nelson, 7040. Attn: Gillian Dancy.  
For all road closure information visit:

[nelson.govt.nz/road-closures](http://nelson.govt.nz/road-closures)

### Approved closures

**Applicant:** Higgins  
**Event:** Trafalgar Street Bridge Maintenance  
**Location:** Trafalgar Street between Halifax Street and Grove Street  
**Date and time:** Sunday 6–Friday 18 October 2019, closed all day and all night

**Applicant:** Higgins  
**Event:** Road Maintenance  
**Location:** Putaitai Street & Neale Ave between Songer Street & Andrew Street  
**Date and time:** Monday 7–Friday 18 October 2019, during the day and night works from 6pm–7am

**Applicant:** Higgins  
**Event:** Road Maintenance  
**Location:** Market Road between Bishopdale Ave and Gardiner Place  
**Date and time:** Thursday 10–Friday 18 October 2019, night works from 6pm–7am.

**Applicant:** Higgins  
**Event:** Road Maintenance  
**Location:** Brougham Street – East and West of Trafalgar Street. Brougham Street – between St Johns Drive and Richmond Ave. Collingwood Street – between Bronte Street and End  
**Date and time:** Sunday 13–Friday 18 October 2019, 7am–6pm



## MEETINGS

Upcoming meetings for the new triennium (2019–2022) will be advertised once confirmed after the Local Elections 2019.

**Broadgreen House will be closed for maintenance on 6 November.**



## What's on at the Libraries?

### Book Launch – Nelson Noir

Join the Nelson STEM Writers at the launch of their new book 'Nelson Noir – a collection of stories for Halloween.' Thursday 31 October, 6pm, Elma Turner Library. MC'd by Karen Stade. Free event, no bookings required.



### Computer Classes

Nelson Public Libraries hold a variety of free computer classes each school term, for beginners and more experienced users who may want to venture further into the digital world, extend their research skills or learn about the digital services the Library offers.

### Elma Turner Library classes, 9.30–11.00am

Using new Library laptops  
Tablets – bring your own  
Ebooks/audiobooks  
Research tools  
Social Media  
Entertainment Apps  
Basic computer skills Q & A

Thu 24 Oct  
Thu 31 Oct  
Thu 7 Nov  
Thu 14 Nov  
Thu 21 Nov  
Thu 28 Nov  
Thu 5 Dec

### Stoke Library classes, 8.15–9.15am

Using Library computers/Chromebooks  
Basic Internet 1  
Basic Internet 2  
Tablets

Fri 1 Nov  
Fri 8 Nov  
Fri 15 Nov  
Fri 29 Nov

Classes must be booked by phoning 03 546 0414, emailing library@ncc.govt.nz or visiting any of the Libraries.

## Please remember to flush your taps

Some plumbing fittings have the potential to allow minute traces of metals to accumulate in water which has been standing in the fittings for several hours.

Although the health risk is small, the Ministry of Health recommends that you flush a mugful of water from your drinking water tap each morning, before use, to remove any metals that may have dissolved from the plumbing fittings.

We recommend this simple precaution for all households, including those on public and private water supplies.

## WHAT'S ON... at a Council venue near you



### Kirby Lane

Nelson Farmers Market. 8.30am – 1.30pm, every Wednesday.

Mercado Latin – Latin Market. 4–9pm, Friday 1 November.

### Saxton Field

The Nelson Half. 7.30am, Sunday 3 November.

### Saxton Stadium

Super Saxton HIIT. 9.15am, Every Monday, Wednesday & Friday. 7.30am, every Tuesday & Thursday.

Saxton Seniors. 9.30am, every Tuesday & Thursday.

Senior Core Balance. 10.15am, every Monday.

Mummy Tummy Fitness & No More Mummy Tummy. 10.15am, every Wednesday.

EvolveFit. 5.45pm, every Monday & Thursday. 9.15am, every Friday.

Bootcamp. 8.30am, every Saturday.

### Saxton Pavilion

Tai Chi – Beginners. 10am, every Thursday

Tai Chi – Intermediate. 11am, every Thursday.

Dru Yoga. 10.30am, every Monday.

Yoga with Loren. 5.45pm, every Thursday & 12pm, every Friday.

### Saxton Oval

Blackcap vs England T20. 2–5pm, Tuesday 5 November.

### Saxton Velodrome

Mighty Masters Cycling Festival – 40–80+ years

Racing 8.30am–3pm Wednesday 16 October with Road Races on Saturday and Sunday 19 and 20 October.

### Trafalgar Centre

Diwali Nelson 2019. 5–9pm, Saturday 26 October.

Corporate & Professional Boxing Event. 3–8pm, Saturday 9 November.

### Founders Heritage Park

Sculpture in the Park. 1pm to Dusk, Saturday 19–Monday 28 October.

Los Galanes. 6.30pm, Saturday 19 October.

Shooglenifty. 8pm, Saturday 19 October.

Dayna Sanerivi. 5pm, Sunday 20 October.

Portraits in Motion. 7pm, Sunday 20 October.

Elisha Hobbs. 5.30pm, Monday 21 October.

This is Tami Neilson. 7pm, Monday 21 October.

Pechakucha. 7.30pm, Tuesday 22 October.

Couch Stories. 7.30pm, Wednesday 23 October.

The Hermsen Family Band. 6pm, Wednesday 23 October.

A Synthesized Universe. 8pm, Thursday 24 October.

Cover Me. 6.30pm, Thursday 24 October.

Herelessness. 8.30pm, Thursday 24–Sunday 27 October.

Pukapuka Talks: Native Son. 1.30pm, Friday 25 October.

Greg Copeland. 8pm, Friday 25 October.

Medicine Woman. 6.30pm, Friday 25 October.

Pukapuka Talks: On the Edge. 11am, Friday 25 October.

Pukapuka Talks: The Friday Poem. 3.30pm, Friday 25 October.

Rabbit Hole. 10pm, Friday 25 October.

Pukapuka Talks: Doctors Who Write. 3.30pm, Saturday 26 October.

Pukapuka Talks: The Absolute Book. 1.30pm, Saturday 26 October.

Pukapuka Talks: Think Brunch 1 – 'Living' Longer. 10am, Saturday 26 October.

Skyscraper Stan and The Commission Flats. 8pm, Saturday 26 October.

Sun City Soul. 6.30pm, Saturday 26 October.

Catavana Sun. 8pm, Sunday 27 October.

Dust & Gold. 6.30pm, Sunday 27 October.

Pukapuka Talks: Think Brunch 2 – The Time to Act. 10am, Sunday 27 October.

Pukapuka Talks: Caging Skies. 1.30pm, Sunday 27 October.

Pukapuka Talks: Backing Wild Cards. 3.30pm, Sunday 27 October.

Pukapuka Talks: Southern Science. 11am, Monday 28 October.

Pukapuka Talks: West Islands. 1.30pm, Monday 28 October.

Nelson Fright Night. 7pm, Friday 1 November.

Dia de los Muertos. 12–5pm, Sunday 3 November.

### Stoke Memorial Hall

Crafters Destash Market. 9am–1pm, Sunday 20 October.

### Trafalgar Street

T20 Trafalgar Street Cricket Challenge. 4.30–5.30pm, Monday 4 October.

### Broadgreen Historic House

A Passage to Nelson: Unpacking the Past. Open daily 10.30am–4.30pm.

### Isel House and Park

Isel Twilight Market. 4.30pm, every Thursday.

## Nelson Public Libraries

### Elma Turner Library

Small Time at the Library. 11.30am, every Monday, & 10.30am, every Wednesday.

Story Time at the Library. 2pm, every Thursday.

Library Knitters. 10am–12pm, every Thursday.

Device Advice. 2pm every Tuesday & Thursday.

Junior Book Club. 3.30pm, every Tuesday.

Tea & Talk. 10am, every Friday.

Justices of the Peace. 10am–12pm, every Saturday.

Young Adult Book Club. 3.45–4.45pm, Wednesday 20 November.

Fundraising for the Iron Duke Sea Scouts. 10am, Saturday 19 October.

Nelson Future Access Project Information – Community Corner. 3pm, Monday 21 October.

Adult Computer Classes. 9.30–11am, every Thursday 24 October–5 December.

DBH Stop Smoking Service. 11am, Thursday 24 October.

STEM Writers at Nelson Libraries. 1pm, Tuesdays 22 October & 12 November.

Alzheimer's Nelson. 10am, Wednesday 23 October.

LEGO Drop-in. 3.30–5pm, Last Thursday of Month, 31 October.

Live Music Series. 2pm, Sunday 27 October.

Friends of the Library Book Sale. 10am, Saturday 2 November.

Nelson Institute Talk. 2pm, Sunday 3 November.

Book Chat. 10.30am, Tuesday 12 November.

### Nightingale Library Memorial

Nellie Knitters. 1.30–3.30pm, every Monday.

Story Time at the Library. 10.30am, every Thursday.

### Stoke Library

Small Time at the Library. 10.30am, every Tuesday.

Story Time at the Library. 10.30am, every Wednesday.

Device Advice at Stoke Library. 2pm, every Wednesday & 11am Every Friday.

### Alzheimer's Nelson. 10am, Thursday 24 October.

Book Chat – Stoke. 5.30pm, Wednesday 16 October.

Young Adult Book Club. 3.45–4.45pm, Tuesday 19 November.

## Museums and Galleries

### The Suter Art Gallery & Theatre

Hours: 9.30am–4.30pm Daily  
Jay Hutchinson: the archaeology of the discarded, forgotten and thrown away. Saturday 21 September–Sunday 1 December.

Sympathetic Resonance. Saturday 19 October–Sunday 9 February.

"We are all Connected" Vicki Charles Exhibition. 5.30–7pm, Thursday 17 October.

Nelson Arts Festival Presents: Cellfish. 8pm, Friday 18 & Saturday 19 October.

Nelson Arts Festival Presents: The South Afreakins. 7pm, Sunday 20 & Monday 21 October.

Nelson Arts Festival Presents: Kaput. 7pm, Tuesday 22 October.

Nelson Arts Festival Presents: Aperture. 7pm, Thursday 24 & Friday 25 October.

Nelson Arts Festival Presents: Still Life With Chickens. 7pm, Saturday 26 & Sunday 27 October.

Refinery ArtSpace

Hours: 10am–5pm Monday – Friday, 11am–2pm Saturday

'RAW' Showcase. Tuesday 1 October–Thursday 31 October.

Nelson Provincial Museum

Hours: 10–5pm Weekdays, 10am–4.30pm Weekends & Public Holidays.

Kura Pounamu – Our Treasured Stone. Saturday 24 August–Sunday 24 November.