

OUR NELSON



TŌ TĀTOU WHAKATŪ



Issue 79 • 18 September 2019

Keep up to date with the latest news from Nelson City Council

Manage your fire permit online

Fire permits can now be managed online as Nelson Tasman Fire and Emergency works to educate the public on the risk of fire. You can check the fire season status in your area, check the progress of your application, view and activate fire permits, and apply to renew any expired or declined fire permit applications. The new National Fire Permit System can be accessed through checkitsalright.nz or phone 0800 658 628.

checkitsalright.nz



Free Buses Weekend!

Nelson City Council with support from Tasman District Council, will be offering free trips on all NBUS services (includes Late Late Bus) on 21 and 22 September to mark both Zero Emissions and World Car Free Day.

Zero Emissions Day is about finding ways to take individual action to reduce emissions. Car Free Day speaks for itself and changing how you choose to travel is an easy way to get started on reducing emissions. Transport is a major source of greenhouse gas emissions so our free buses weekend is an invitation for everyone to give the bus a try instead of taking the car. You'll also be helping to reduce congestion plus catching the bus can be fun and sociable.

Mayor Rachel Reese says "We know we all need to make changes to address the climate emergency. We're asking everyone to think about what they can do differently, as we start to think about how we can do the same with how we operate at Council.

"Around 20% of New Zealand's emissions come from transport so even just taking the bus one day a week instead of the car can make a big difference.

This weekend gives everyone a chance to try the bus for free and I encourage all Nelsonians to give NBUS a go," says Mayor Reese.

After riding the NBUS for free at any time over the weekend, everyone is invited to give feedback on their journey via Council's Facebook or Instagram. You can say what you liked about it or give us your ideas on how to improve the service, and go in the draw to win grocery vouchers and free bus tickets.

You can also be in to win the prizes just by posting a photo of you or your friends and family taking a free ride on the bus on Saturday 21 or Sunday 22 September.

Get all the timetable information on the NBUS website.

nbus.co.nz

3 Count kererū and help us double the numbers!

5 Motorcycle Awareness Month is back for 2019!

14 Brand new theatre and high-energy music

VOTE 2019
LOCAL ELECTIONS

PŌTI 2019
NGA PŌTITANGA Ā-ROHE

ELECTION SPECIAL, PAGES 6-12

Have you enrolled to vote?

Meet the candidates and find out everything you need to know about the 2019 Local Elections.

Nelson The Smart Little City
He tāone tōrire a Whakatū



nelson.govt.nz



546 0200



twitter.com/nelsoncitynz



facebook.com/nelsoncitycouncil



youtube.com/nelsoncouncil



How do you travel to work?

Nelson City Council is working with some of the region’s big employers to make it easier for more people to travel to work differently, rather than sitting in a car on their own.

Single occupant vehicles are a major cause of congestion on our roads, and they add to carbon emissions.

Council’s Travel Demand Management Adviser helps employers with workplace surveys to find out how staff are travelling to work and what needs to happen for them to consider alternatives like walking, cycling, public transport or ride-sharing.

The Cawthron Institute is one workplace that is already well advanced in this area. Twenty-seven per cent of their staff walk or cycle to work, according to a recent staff survey, which is higher than average for Nelson.

It hasn’t happened by accident. Over the past few years, the Institute, at the instigation of enthusiastic staff, has removed some of the barriers that prevent people from making an active travel choice. There are showers and changing areas available and plenty of room to safely park your bike.

Cawthron provides six bikes and six electric scooters for staff. They initially purchased two scooters for their town office in mid-March to assist with the commute between their Hardy Street and Halifax Street East offices. They proved to be so popular with staff that another four were purchased for their Halifax Street site.

Since mid-March, the two town e-scooters have done 499km, that’s the equivalent of Nelson to Akaroa! Helmets are provided for staff safety.

They have found that fun challenges help to encourage people to try active travel and build momentum for those who are already doing it. Each summer they run a challenge called the RACE, which stands for Rewarding Active Cawthron Employees/Revolution Against Carbon Emissions.

Last summer, 60 staff members participated and logged a total of 244,576 exercise minutes as part of the event. That equates to \$5000 in fuel savings and 4000kg of CO₂, an amazing achievement. Prizes, monthly morning tea announcements and some healthy rivalry between departments keep the challenge engaging and exciting for staff.

The team cite improving staff wellbeing by making it easier to be active during the workday and reducing carbon emissions as the key reasons for getting involved, but say the benefits go far beyond that.

If you’d like help to get a similar process started at your workplace, please drop a line to kym.smith@ncc.govt.nz

It could be easier and much more fun than you expect.

Top tips for safe use of e-scooters

- Always ride in a safe and considerate manner, including giving way to pedestrians and mobility devices.
- Ride at a safe speed that does not pose a hazard to yourself or others.
- Be aware that cyclists, other road users and pedestrians may not hear you approaching.
- In areas where you must use the road rather than the footpath (around the CBD for instance), keep as far to the left as you can for your own and others’ safety.
- We strongly recommend that e-scooter riders wear helmets.



Can you help create beautiful baskets?

Will you be one of the team of volunteers who help us create a beautiful new bunch of hanging baskets for the summer?

Around 650 baskets need planting, ready to go up around the city in late November/early December.

The planting will be done at the NELMAC Nursery on Atawhai Drive. The session times available are as follows:

- **Monday 14 October**
10.30am–12pm and 1.30–3pm
- **Tuesday 15 October**
10.30am–12pm and 1.30–3pm
- **Wednesday 16 October**
10.30am–12pm and 1.30–3pm

Fifteen volunteers are needed per session. All you need to bring are your own gloves and a good dose of enthusiasm. The 90-minute sessions will see you planting Begonias, Impatiens and Geraniums, with nursery staff on hand to help and advise if needed.

In the past, people have really enjoyed the planting process, and it’s a good skill to learn, as you can then go home and create your own hanging baskets.

The baskets really bring the city to life over the summer months and are enjoyed by locals and visitors alike. We’d love your help to get them up and running again this year.

If you would like to volunteer as a hanging basket planter, call Council Customer Services on 546 0200 to register.



Count kererū and help us double the numbers!

The Great Kererū Count is on again, from 20–29 September 2019.

Have you seen kererū in Nelson? The map shows recorded sightings of kererū in the Nelson region taken during the Great Kererū Count over the last few years. The number of people taking part in the Great Kererū Count is growing each year. This year we want to double the number of observations! Last year there were 200 observations of a total of 400 kererū – let’s make it 400 observations this year and see how many kererū we can count.

Your observations will help us fill in the gaps, to see where kererū are (and are not) in Nelson, and how their numbers are changing every year.

How can you help?

Sometime between 20 and 29 September spend between five and 30 minutes looking for kererū at any spot in Nelson, and record any kererū you see (including if you see no kererū – as we need that information as well). Then go to greatkererucount.nz/how-to-count to get your observations into us. The orange dots on the map show where kererū have been observed previously in Nelson. You can do as many observations as you want through the week, in one spot or at different sites, and also record any casual sightings of these birds, when you are out and about, in the same way.

Why should you help ?

Kererū are protected birds and endemic to New Zealand, and we know their numbers have fallen from the numbers reported 50–100 years ago. The Great Kererū Count is the only centralised data gathered to monitor the overall national trends of this significant bird.

Kererū are well placed to benefit from community efforts to restore habitat and trap predators as part of the Nelson Halo project. The Nelson Halo is an area of predator control and habitat enhancement surrounding the Brook Waimarama Sanctuary to provide a safe haven for wildlife.

By taking part in the Great Kererū Count, you’ll be contributing to our understanding of how their numbers are changing over time and how effective community predator control efforts are in the Halo.

These birds are an integral part of our ecosystem, as they are the only native bird that can spread the larger fruit of native trees like tawa and matai.

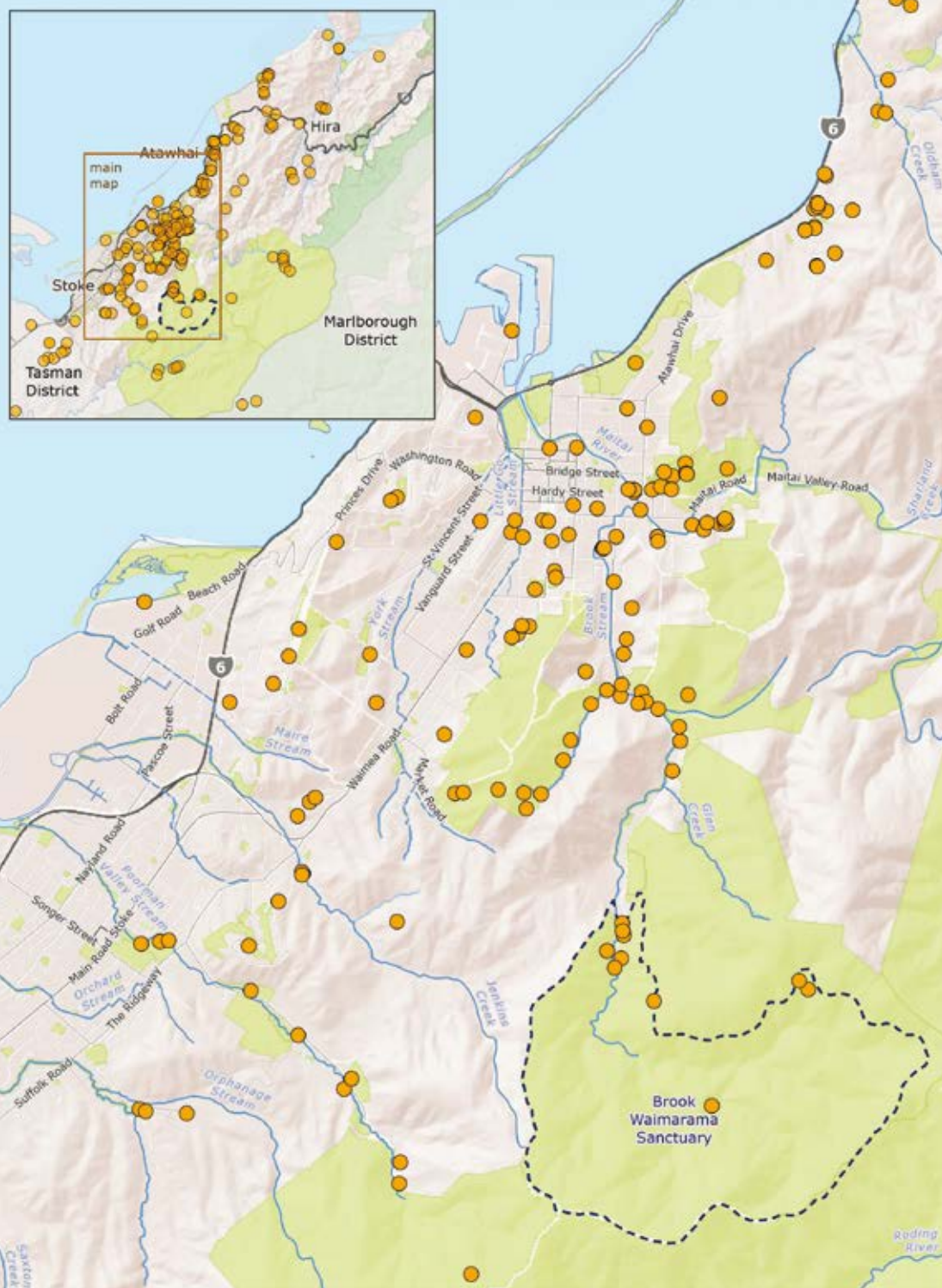
What else can you do?

This year, New Zealand’s native forest has experienced an epic mast season on a scale not seen since 1971. Normal fruiting of larger podocarps is usually staggered across years, but this year we have seen almost every large podocarp fruit at the same time which is unprecedented. Tawa, rimu, kahikatea , totara, miro, hinau have all fruited at the same time which means a huge bounty for kererū – but unfortunately it will also mean an explosion in pest numbers – mice, rats and stoats and that is bad news for fledgling kererū.

If you can help this year, get a backyard trap going, or join a trapping group to help control these pests so our kererū and other native birds can survive. For info on pest trapping go to Predator Free New Zealand.

For more info and to take part in the count, go to the Great Kererū Count website.

greatkererucount.nz



YOUTH COUNCIL UPDATE

The Nelson Youth Council installed an amazing, locally made picnic table recently, along the Maitai River at Sunday Hole.

Prior achievements of winning the 2017 Trustpower Community Awards – Nelson Award and a koha received from interacting with the community, helped make this possible. The project was completed with the assistance of Nelson City Council staff who helped turn this idea into reality. The Nelson Youth Council understands the importance of community spaces which positively coexist with the environment. Therefore, it is hoped that this space will be utilised by Nelson's youth and the wider community now and especially during the summer period.

By Nelson Youth Councillor Alex Hunter



Nelson Residents' Survey results are in

It's that time of the year again, and the results are in for Nelson's Annual Residents' Survey.

While there were increases and dips throughout the surveyed categories compared to previous years, overall there was a positive trend towards Council meeting residents' expectations.

The Annual Residents' Survey provides the community with an opportunity to let Council know their thoughts about facilities and services, and whether Council activities and initiatives have helped to make Nelson a better place to live and work.

Council uses the results from the survey to inform our planning, as well as reporting on targets set for the service levels.

The survey showed that Nelson remains above the national average for people taking active modes of transport to work (increase to 19% from 14% last year), and there was an increase in satisfaction with public transport (47% up from 42% last year).

This is a trend Council hopes to continue with the recent introduction of WiFi on buses and the introduction of electronic ticketing in this coming financial year.

Nelson residents were also more satisfied with the opportunities to provide feedback to Council than last year, increasing from 36% of residents very satisfied or satisfied in 2017/18, up to 44%

in 2018/19.

Dips in results included attendance at festival events due to clashes with other events and a drop in residents who used or visited the Nelson Public Libraries (from 67% in 2017/18 to 62% in 2018/19).

This statistic reinforces Council's desire to proceed with the Elma Turner Library Redevelopment Project, to meet the needs of the Nelson public.

"Overall respondents were very positive towards the library, although the physical environment of Elma Turner Library has been a discussion point for some time and is being addressed by the redevelopment of the Library," Chief Executive Pat Dougherty says.

"Community input on what the library should provide is currently underway."

"We really appreciate the public providing us with their feedback through the residents' survey. It provides a snapshot in time that we can use to help shape and grow our Smart Little City so that residents' needs are met."

Market research company National Research Bureau Ltd interviewed a random sample of 402 residents by phone and conducted 40 face-to-face interviews.

For further details about the Nelson City Council Residents' Survey go to:

nelson.govt.nz/residents-survey

19% TAKE AN ACTIVE MODE OF TRANSPORT TO WORK



47% SATISFIED WITH PUBLIC TRANSPORT



44% SATISFIED WITH THE OPPORTUNITIES TO PROVIDE FEEDBACK TO COUNCIL



62% USE AND VISIT THE NELSON PUBLIC LIBRARIES





Water meter reading

The residential water meter reading round starts on 1 October, and will continue for two months. Please check and ensure that the area surrounding your meter, and the meter box itself are clear and easily accessible for the meter readers.

The meter readers are allowed to read the meters between 7am and 7pm seven days a week, including Sundays and Public holidays. They will be identifiable by their hi-visibility vests with 'WATER METER READER' and "SMS" on the back. They also carry ID with them, which you may request to view.

As part of the ongoing maintenance of the meters, some meters will be checked to see if they are still recording accurately. If your meter is being checked the meter reader will let you know if you are at home at the time. If no one is at home, a letter will be left in your letterbox letting you know that Council contractors have been. The test requires the meter reader to fill a 10 litre bucket with water. If the meter needs to be replaced, the water will be turned off to do this. The whole check usually takes about 10 minutes. These

checks will still be ongoing in December.

If your meter is not easily accessible for the readers, e.g. behind a locked fence or if you have dogs, please call our Contractor's help desk on 027 286 7337, so that suitable arrangements can be made to have the meter read. Please be aware that if you don't make a suitable arrangement or repeated visits are needed to obtain a meter reading, you could be charged a Special Water Meter reading fee of \$28.50.

All water used through the meter is charged at \$2.137 per cubic metre. This is inclusive of GST.

The Invoice/Statements are posted out usually within two weeks of the meter being read. They will be due for payment on 20 December, 2019. If your account has a balance of less than \$10 or a credit of less than \$10 no invoice will be sent.

Motorcycle Awareness Month is back for 2019!

September is Motorcycle Awareness Month (MAM) and signals the start of the motorcycling season. Over half of all motorcyclists start to get their bikes out of the garage and onto the roads after a winter break.

If you're a rider it's a good time to refresh your riding skills, ensure your gear offers you the right protection, and check your bike before getting back on the road.

If you're a driver it's time to be aware that there are more bikes back on the road, 'Look Twice' at intersections and before changing lanes. All road users play a part in keeping each other safe on the road.

This September we will be giving out vouchers for free

10 point motorcycle checks at local retailers, and hosting a free event, the 'Bikers Brunch' at Filco Nelson on Sunday 29 September. There will be over \$1000 in vouchers, a set of Bridgestone tyres, free coffee and BBQ and other awesome giveaways.

Check out ridetolive.co.nz for further information and to register for your subsidy for free training skills and training courses.

ridetolive.co.nz

Feedback invited on proposed Parking Bylaw change

Nelson City Council is proposing to make some changes to the Parking and Vehicle Control Bylaw.

This is to bring the references to the parking meter technology into line with the changes that will happen next year, and to make minor terminology changes. It also reflects that only one hour of free parking will be available per vehicle per calendar day under the new parking technology.

Council is in the process of seeking tenders to change to a "Pay by Plate" parking system. The existing bylaw includes multiple mentions of the "Pay and display" paper ticket meters that are currently in use.

The proposed wording changes to the Bylaw are intended to make it

relevant to new and future parking technology.

You can see a copy of the Bylaw, highlighting the proposed changes at Civic House in Trafalgar Street, the libraries or on the website, nelson.govt.nz.

Please send us any feedback on the proposal by Wednesday 16 October. You can email it to submissions@ncc.govt.nz, complete an online feedback form at nelson.govt.nz or post it to: Parking and Vehicle Control Bylaw Feedback Nelson City Council PO Box 645 Nelson 7040



2019 Local Elections – Nga Pōti

Voting papers will be sent out to enrolled voters from 20–25 September 2019. You have until 12 midday on Election Day 12 October 2019 to cast your vote.

Select the candidates you wish to vote for on your voting papers, seal your pre-paid envelope and put your completed voting papers in a post box to arrive by midday on 12 October. Last suggested day for using NZ Post is Tuesday 8 October. You can also drop your voting papers into one of the ballot boxes in Council's Customer Service Centre or any of the Nelson Public Libraries up until midday on Saturday 12 October.

What if I haven't enrolled yet?

Don't worry, it isn't too late! You won't get your voting papers sent to you in the mail, but you can request special voting papers from Nelson City Council's Electoral Officer at elections@ncc.govt.nz or phone Council's Customer Service Centre on 546 0200.

What if I need to change my details on the electoral roll?

Any changes to the residential roll, such as name or address, can be made directly

by telephoning 0800 ENROL NOW (0800 367 656) or by going on to the Electoral Commission website, elections.org.nz. You can also pick up a form at a NZ Post Shop, the Nelson Public Libraries or the Customer Service Centre at Nelson City Council.

I am overseas or going to be overseas and still want to vote in the 2019 Local Elections?

What if I don't receive my voting papers by the end of this week?

Do you have any further questions?

Please email elections@ncc.govt.nz or call Council's Customer Services Centre on 546 0200. For further details on voting or candidates go to Council's website: nelson.govt.nz/elections-2019



Mayoral Candidates

Mel Courtney

My principal place of residence is in the Nelson City Council – At Large area. I am also standing for Mayor. I love Nelson, it's a beautiful city with brilliant people and it is a privilege to be your voice on the Nelson City Council. Having been your Member of Parliament and a City Councillor I have an intimate knowledge of the workings of both central and local government. I have a strong business background having owned and operated supermarkets, alongside other business interests, creating hundreds of jobs in the Nelson region. This gives me a deep understanding and appreciation of the challenges faced by our community. Being independent gives me the freedom to speak openly and honestly to make decisions that benefit everyone. My focus is on promoting policies that make our community more sustainable, resilient and connected. This is where our future lies! The Nelson City Council needs councillors who are skilled, experienced and understand the complexities and importance of local government. That's what I'm offering you.

- 022 079 6250
- mfcourtney@hotmail.com



Bill Dahlberg

My principal place of residence is in the Nelson City Council area. I love Nelson, home to my family for 35 years. But in the three years I've represented you on Council, I've realised we can and must do better. It is unacceptable to have high rates rises while Council struggles to deliver projects on time or within budget. We need strong leadership to get the Council team working together for you and our growing region. I have the skills and experience needed. For 20 years I owned a local company providing financial advice to families and businesses, and chaired their NZ Board. I was a Rata Foundation Director for eight years, established Warmer Healthier Homes Nelson/Tasman (insulating 1,500 homes), and helped re-home Nelson Netball to Saxton Field. I've coached the Nelson Giants and many local basketballers. I understand business, the community and our environmental challenges. I seek the privilege of working as your Mayor. I would appreciate your vote.

- 027 467 4100
- billdahlberg@xtra.co.nz



Avner Nahmias INDEPENDENT

My principal place of residence is in the Nelson City Council area. A calling, A trust. Mayor, the most privileged of public service appointments. Significant enough to make a difference to an entire city, yet intimate enough to enable instant response to an individual ratepayer's predicament. It's all about people. My apolitical leadership qualities will restore positivity, optimism and a common vision within Council. We simply must shift the Us and Them line to include everyone, primarily council staff who, by nature of the system, appear to be on the other side. Priorities. All issues are interconnected. My heartfelt desire is to apply my holistic approach in matching the aesthetics of our systems with the beauty of our landscape, with equality, efficiency, transparency and integrity, resulting in lower debt and reduced rates. Sustainability. Seventeen years ago I made Nelson my home, building and planting so that my son and all future generations will continue to enjoy Nelson's unique qualities in perpetuity.

- [f Avner for Mayor](#)
- avnerformayor.nz
- avnernahmias@yahoo.com



Mayoral Candidates

Rachel Reese INDEPENDENT

My principal place of residence is in the Nelson City Council area. I've never seen such energy and cohesive momentum than right now in Nelson. We are rightly proud of where we live. Since becoming Mayor, I've been fortunate to work with people throughout our community who are as passionate as I am for our city. Together we have built partnerships to support social and cultural wellbeing, attract new investment, deliver key infrastructure, and protect our environment. All while carefully managing Council finances. We need to keep the momentum going. Improved transport links, a more vibrant city centre, responding to climate change, and delivering affordable housing choice, are my priorities. My commitment is always to do what's best for our city and I'm clear that we can all enjoy the prosperity this region has to offer. I look forward to continuing to work hard for you as your Mayor. I ask for your vote – for Nelson's people and prosperity.

- rachelreese.co.nz
- [f rachelreese4yournelsonmayor](https://www.facebook.com/rachelreese4yournelsonmayor)
- [i rachelreese4mayor](https://www.instagram.com/rachelreese4mayor)
- 027 548 3021
- rachel@rachelreese.co.nz



Tim Skinner

My principal place of residence is in the Nelson City Council area. I am also standing for Council – At Large. Tim Skinner is a born & bred Nelsonian with a passion to lead Nelson forward. As City Councillor Chairman he has worked tirelessly ensuring residents needs heard and communities consulted, to build a healthy vibrant safe community. He has kept his word in striving to keep rate rises down, and been a strong voice for families around the Council table. With his business skills, Tim has consistently championed our council to be prudently minded and supportive of local business & industry. Tim's proven record of leadership, teamwork, and getting things done, sees him as the ideal Mayor Nelson needs, to ensure our city is economically strong and an affordable place to live and raise a family for future generations. He's married with children, and successfully built up his own business over 20 years, embraces Nelson's lifestyle, and is a keen footballer. More info on Tim Skinner for Mayor on:

- timskinner.nz
- 021 668 733
- tim@timskinner.nz



John Wakelin PATRIOTIC

My principal place of residence is in the Nelson City Council area. I am concerned about Nelson's welfare. Nelson needs someone like me as Mayor to make you smile. In 1984 I was in a vehicle accident which left me with a significant brain injury. This has helped me gain a different perspective on life and motivation to look after the underprivileged in my metropolis. As Nelson Mayor I will change this city for the betterment. Reducing rates by eliminating wasteful Council spending, electrifying all vehicles, enhancing access to community resources for people with disabilities e.g. installing steps to swimming holes, creating a free right turn (from Waimea Rd) at Motueka St lights, halving cost of dog licenses, implementing harsher penalties for criminal activities. I will be accessible to the public for your suggestions and thoughts about the future of your city. I will work steadfastly for the environment. See? Bet you are smiling skeptically. Vote For Me. I'll make it happen.

- 021 204 5476



Mike Ward

My principal place of residence is in the Nelson City Council area. I am also standing for Council – At Large. The challenges facing Nelson and our planet may be daunting but for communities choosing to show the way, the opportunities are substantial. And the reward? An affordable, gorgeous and fun city the rest of the world flocks to, to find out how we did it. Making it happen will take courage, creativity and collaboration. Becoming a role model requires a different kind of leadership and a commitment from all of us. I am an artist and an experienced politician. I have shared the leadership of the Values Party and a range of community organizations, spent more than twenty years as a Member of Parliament or city councillor and I know and love this community for its courage, creativity and generosity and its willingness to step up. Affordable, gorgeous, inclusive, fun... and sustainable? Our children deserve no less and the world is waiting to be inspired.

- [f Mike Ward for Mayor](https://www.facebook.com/mikewardfor mayor)
- 022 035 9175
- mikeward@ts.co.nz



Councillor Candidates

Ian Barker

My principal place of residence is in the Nelson City Council – At Large area. I've worked hard as an approachable Councillor and Chairman. I've served as a voluntary leader in many community organizations. With my knowledge, experience and dedication, I've made valuable contributions to our city. Economic prosperity is vital for Nelson and Council needs to focus on core needs and the creation of opportunities. Prudent financial management remains a top priority and proper consideration of actual costs and benefits of planned expenditure is needed. I'll continue my commitments to limiting rate increases to inflation rates, supporting all age groups, stopping elder abuse, prioritizing traffic congestion solutions and bringing retail back to Nelson. Always available, I'm keen to continue to serve. I have a wide range of contacts and I realize how vitally important my historical knowledge is for Council debate and decision making. Living in Nelson is a privilege and contributing to sensible decisions to shape our future is a priority for me.

- 027 496 6864
- ianpbark@gmail.com



Yvonne Bowater PASSIONATE ABOUT NELSON COMMUNITY

As a dedicated, community-focused Nelsonian, with experience resolving complicated issues by finding practical solutions, I believe I am well-suited to represent the people of Nelson on Council. The majority of my career was in the hairdressing industry, eventually working at a national governance level. It was in this people-focused sector that I honed my excellent communication skills and my ability to listen. I have been involved with many community organisations such as heritage, youth, non-profits, business, education and health in regional and national capacities. Whenever I see a need, it is in my character to help – directly lending a hand or by connecting others. I want to be part of a Council that listens to its citizens, gets things done, and lives within its means whilst encouraging growth and opportunity. I would appreciate your vote and will work diligently to make Nelson a strong, vibrant place for our entire community.

- 027 673 1411
- vonicoe@xtra.co.nz



Councillor Candidates

Trudie Brand
A STRONG VOICE
FOR NELSON

My principal place of residence is in the Nelson City Council – At Large area. I hold a Bachelor degree in Commerce and Management, a post-graduate diploma (PGDipSS), and diplomas as an Independent Celebrant, Career Counsellor and Life Coach. I have three decades of work experience, across business, government and non-government organisations with boards of Trustees and governance experience. Currently, I am an active member on the board of Nelson Y.M.C.A, President of Rutherford Rotary Club, member of the Celebrant Association NZ and National Council of Women – Nelson. Historically, I was the vice-president of the Nelson Residents Association. I wish to actively represent the community at a local government level. As a councillor, I would encourage greater public participation in decision-making, by providing a strong voice, open mind, that clearly represents, promotes and protects ratepayer's interests, whilst balancing the provision of core services against debt levels and maintaining affordable rates.

- 027 756 8201
- taz-brand@xtra.co.nz



Allen Chambers
STOP THE NONSENSE

My principal place of residence is in the Nelson City Council – At Large area. Mission (more information at councilchambers.info) Root out sources of the unsustainable rate increases and resist Quote some staff and councillors appear to believe that it is acceptable to increase rates to beyond the affordable level for ratepayers on a fixed income. Unquote-footnote Provide large organisation, managerial experience to mitigate Quote The ability of councillors to govern could be strengthened with further training in risk management, audit and finance, and training and experience in managing utilities such as the three waters. Unquote-footnote Provide critical thinking to mitigate Quote The Council would benefit from a more robust business case discipline that is consistently applied to new projects. Unquote-footnote Root out self-dealing (e.g. using your official position to secure a contract for a private company you own) and other inappropriate behaviour. Work with business leaders and the community to develop organically adaptive solutions that are mainly driven by competitive, free enterprise. footnote-CouncilMARK-Assessment-Report-Nelson-City-Council- 2017-FINAL.pdf

- councilchambers.info
- 021 567 045
- allen@councilchambers.info



Dennis Christian

My principal place of residence is in the Nelson City Council – At Large area. As a residential and commercial rate payer I am concerned about rates increases. I will use my financial and governance experience to ensure that our rates are used in the most responsible way. I want to contribute to a council that works together in the best interests of the residents to create a vibrant and sustainable city for now and future generations. I am not afraid to stand up for what is right, have strong leadership capabilities and am willing to put in the work to ensure you, the Nelson community have a voice. A member of the Institute of Directors, I am an experienced company director and have served seven years as Chair of Nelson College. I am involved as a volunteer with many other community and sports. My wife and three sons share my passion for our community. Work with me to create a vibrant and sustainable region.

- [f dennis4nelsoncitycouncil](https://www.facebook.com/dennis4nelsoncitycouncil)
- [in Dennis Christian](https://www.linkedin.com/in/Dennis-Christian)
- 027 476 3276
- dennis@flyingkiwi.com



Alastair Cotterill

My principal place of residence is in the Nelson City Council – At Large area. Alastair Cotterill will be a voice for Nelson community. I am passionate about our families, from the youth to adults, in helping them grow with confidence and creating a positive impact on their lives. I want to ensure rate rises are kept down and a control of expenditure. I will listen to community concerns and issues when they arise. I want to ensure local businesses and industries have a base to thrive, creating economic success for the greater region. I have successfully run my own professional tennis business for 32 years. Outdoors and running is also a passion. And when running the Grampian hills, and looking down over Nelson, I am really proud of our city and what it could also be. I am great believer that sport can help youth to adults in a positive way. I will be a champion for Nelson residents.

- 027 348 8029
- tigertennisnz@yahoo.com



Mel Courtney

My principal place of residence is in the Nelson City Council area. I am also standing for Council – At Large. I love Nelson, it's a beautiful city with brilliant people – it would be a privilege to serve as your Mayor. Having been your Member of



Parliament and a City Councillor I have an intimate knowledge of the workings of both central and local government. I have a strong business background having owned and operated supermarkets, alongside other business interests, creating hundreds of jobs in the Nelson region. This gives me a deep understanding and appreciation of the challenges faced by us all. Being independent assists me in bringing together a democratic, transparent and accountable council working for the benefit of everyone. My focus is on promoting policies that make our community more sustainable, resilient and connected. This is where our future lies! The Nelson City Council needs a leader who is skilled, experienced and understands the complexities and importance of local government. That's what I'm offering you.

- 022 079 6250
- mfcourtney@hotmail.com

Glen Daikee

My principal place of residence is not in the Nelson City Council – At Large area. I am seeking your support for election to the Nelson City Council. I start by acknowledging the hard work of those before us and I strongly understand that what I will do as a councillor has a real impact on future generations and the city they will inherit. I am a 39 year old husband and father. My wife is a nurse and my son attends Intermediate. I come from a practical background. For the last eleven years I have worked at a local asset and services company. I know Nelsonians want bold action to progress Nelson forward and I look forward to serving you on Council. I will, with your vote, work hard to create a legacy that is exciting and affordable for all Nelsonians. Thank you.

- 022 458 2769
- glendaikee@outlook.com



Sunny Daly-Keenan
PUTTING PEOPLE FIRST

My principal place of residence is in the Nelson City Council – At Large area. I live in the Victory community with my wife and our bubbly energetic 7-year-old son who is in year 3 at victory primary school, I was born in Auckland but have grown up in Nelson. I went to Auckland point school and Nayland college I'm a big sports fan especially rugby league and have been involved in refereeing Touch for many years. Despite being hit by a car at a young age and sustaining a disability that affects my left arm and speech, I don't let this stand in my way from pushing for my goals and trying my best in everything I do and I have always strived to do more in my life to provide for my family.

- 021 0886 9983
- sunny_keenon@yahoo.co.nz



Councillor Candidates

Judene Edgar

My principal place of residence is in the Nelson City Council – At Large area. Proud to call Nelson home, I was a Richmond Councillor for three terms (didn't seek re-election 2016), an Airport Director, and am a Network Tasman Trustee. Married with two sons, I work as a Community Development Advisor.



I bring a strong regional perspective and significant local government and governance experience. I walk the talk, committing my time, experience and money towards supporting the community and enabling community organisations to be strong and healthy. Nelson's growth, and the delivery of services and infrastructure, needs to be strategically planned and well-managed ensuring affordability and sustainability. As a region, we must strengthen our community resilience and protect our natural resources while enabling economic development, employment opportunities and delivery of community services. I offer honesty, integrity and commitment. I want to be part of a Council that listens to the community, is responsive to their needs, and enables innovation, development and positive action.

- judeneedgar.co.nz
- [f JudeneEdgarNCC](https://www.facebook.com/JudeneEdgarNCC)
- 021 541 927
- judene.edgar@gmail.com

Kate Fulton

My principal place of residence is in the Nelson City Council – At Large area. Climate Action, Healthy Environment, Connected Communities. Growing up in Nelson, I have loved this city as a child, as a teenager, and as a mother raising three children. Travelling overseas, I completed a PhD in Chemistry at Cambridge University, England. I then lived in Melbourne, Australia, working as a research scientist. I have served on Council for nine years. I bring an evidence-based perspective, alongside kindness, compassion, and creativity. I have the tenacity to persevere, an enduring optimism, and the governance experience required to champion generational solutions on the big issues: the climate crisis, global environmental collapse, and social inequity. Nelson's smart city solutions include: Rapidly accelerated local responses to the climate emergency declaration. Continued restoration of biodiversity, fresh water, and marine environments. Promoting a regenerative economy, which places social foundations and ecological guardianship, at the heart of prosperity and wellbeing. Vote Kate Fulton. Giving Hope to the Future, Now.



- 027 844 3197
- kate.fulton@mac.com

Bernie Goldsmith INDEPENDENT

My principal place of residence is in the Nelson City Council – At Large area. I am also standing for the Nelson Marlborough District Health Board. Vote to elect the first Maori woman to Nelson Council in 145 years and create history. As a working-class rate payer, business owner and single mother, I know the financial struggles everyday Nelsonians face. I stand for everyday people and, if elected, I will look at all rate payer funded projects from a grassroots affordable level. I have a strong business, legal, financial and diplomatic background. I hold teaching, health and administration qualifications and have worked with the Police and the Courts. As an independent candidate with a cultural heritage, I am able to listen to the wider community, with an open mind. I will be proud to stand in the place I love. Follow my daily facebook blog Bernie Goldsmith for Nelson City Council.



- [f berniegoldsmith2019](https://www.facebook.com/berniegoldsmith2019)
- 021 234 9093
- bgoldy@hotmail.co.nz

Owen J. Houliston

My principal place of residence is in the Nelson City Council – At Large area. Forthright, feisty – with common sense! Represented the Richmond Borough Council ratepayers – (Deputy Works Chairman/Town Planning Cancelled). Represented Council (with the Town Clerk) at the Municipal Conference, Dunedin – and had my say! Represented Council at South Island Promotion Association. 5 years NZ Black Watch Armoured Corps. Performed with the Dundin Operatic Society. Power Board, Senior Foreman – seven staff reticulating underground Main Rd Stoke – 8 months job – commended by the Board Chairman for a job well done. Recorded my vote against a swimming pool at the time – the only one to identify it as a potential burden on the ratepayers. Not against sporting concepts – I've been a sportsman involved in Rugby, Cricket, Soccer, Tennis and Bowls. I would call for an audit of council staffing re: the necessity for some positions (co-ordinators etc) as the rot starts in house. Would have voted against the Māori Ward. I will serve you well.



- 027 727 6257



Robbie Kavanagh PATIENCE, HUMILITY, GRATITUDE

My principal place of residence is in the Nelson City Council – At Large area. I am respectfully seeking your vote on a platform of the same 5 principles I stood for in the previous 2 elections: Community Engagement, Open Government, Fiscal Responsibility, Futureproofing Infrastructure and Incentivising Small Business. A Community's views are paramount and require clear representation. This can only come about through continual Engagement. A commitment to transparency and accountability is vitally important to ensure Open Government that builds public trust in The Council and its decisions. Fiscal Responsibility requires the ability to operate within the projected means of revenue generated by the ratepayer, and to not exceed that. Futureproofing Infrastructure, against primarily Climate Change, guarantees the capacity for sustainable population growth, imperative for regional prosperity and certainty for future generations. Incentivising Small Business makes the region more attractive and easier for those considering setting up shop here. With your vote, I will totally make a difference, for now, and for the future!



- 021 592 842
- ringo@ruckin.nz

Luke King COMMITTED TO WORK FOR YOU

My principal place of residence is in the Nelson City Council – At Large area. I believe in Nelson, it's my home, the place I've grown up, skinned my knees. I committed to sport every weekend and enjoyed what Nelson has to offer learning very valuable and hard lessons along the way. I will commit to Nelson in ensuring infrastructure upgrades, social development, fair rates reviews, council supported mental health initiatives, enhancing the culture of our business/council relationships, protection of our environment and crime reduction through addressing crime related issues. Why are we dumping human waste into Tasman Bay Why are we using Toxins that harm wildlife Why don't we use NCC assets for profit and people Why is our CBD/ hospitality trade suffering I will utilise our funds where its needed, I will support change and what matters, I will work hard with you to be proud to call Nelson home! I am THE Nelsonian to be the voice FOR Nelsonians!



- 020 407 71618
- luke.king.nz@gmail.com

Councillor Candidates

Matt Lawrey

My principal place of residence is in the Nelson City Council – At Large area. I'm standing for re-election because I believe I've helped to make Nelson a better place and, with your support, I'd like to continue that work. Over the last two terms of Council I have successfully pushed for more flexible housing policies, a healthier environment, safer and more efficient transport links, and more open governance. I've supported sensible infrastructure spends and spoken out against unjustifiable ones. I also spoke out against a proposed bylaw that, had it been passed, would have reduced Nelsonians' freedom to protest. I successfully campaigned for the upper Trafalgar St summer road closures and for policy that makes it easier for women and younger people to stand for Council. Vote for me and I'll work hard over the next three years to reduce congestion, convert empty offices into housing, increase democratic participation, and bring greater transparency to Council. Vote for progress. Vote Lawrey. For more visit:

- mattlawrey.co.nz
- 027 406 3434
- Mattlawrey7010@gmail.com



Stephen Lindup

VOTE FOR ME, FOR
A BETTER NELSON

My principal place of residence is in the Nelson City Council – At Large area. I am standing for the Council because I want Nelson to be a better place to live, a place we are proud to call our home. This means initiatives such as warmer homes, more support for social housing, and improving facilities so we can be out there enjoying what Nelson is famous for. I support improving the flow of traffic in and out of the city, I want to see better subsidised public transport, more affordable housing, retaining carparks and creating more all day carparks, more help for homeless in Nelson especially for youth. But these are my goals, I want to represent you on the Council. I would encourage public participation in decision-making, and taking ownership of decisions made by and for the people in the region, giving you more say in what Council does with your cash. A vote for me is a vote for a better Nelson.

- 027 804 8095
- stephenstartrek@gmail.com



Brian McGurk

LABOUR PARTY

My principal place of residence is not in the Nelson City Council – At Large area. Do you share my vision for an inclusive, safe, and sustainable Nelson? My priorities include: prudent stewardship of finances and assets, wise investment in infrastructure, community facilities and services, providing decent affordable housing, advancing realistic transport solutions, and protecting our natural environment. I am an active and committed councillor with an exemplary attendance record. I've made strong contributions to many committees and working groups. I've chaired the Planning & Regulatory Committee and Nelson Biodiversity Forum during my two Council terms. Most recently I've been on the Community Services and Sport & Recreation Committees. Prior to serving on Council, I was the Nelson Bays Police Area Commander before leading an international team of officers in Afghanistan. In 2013 I retired from the Police after 35 years' service. My strengths are my strong commitment to serving the public, broad experience, consistent and responsible leadership, and ability to listen and work in partnership.

- 027 444 0170
- brian@brianmcgurk.co.nz



Dai Mitchell

My principal place of residence is in the Nelson City Council – At Large area. My partner and I grew up in the area and our 2 children enjoy living in sunny Nelson. Over the last 2 years I have been involved in community groups including the Nelson Residents Association where it has become obvious that maintaining important infrastructure while keeping rates low, is the main goal of council. Transparency and accountability in council discussions and decision making are aspects this council could continue to improve upon, ensuring the technological advances and associated health concerns of 5G, PredatorFree2050, geo- engineering/climate change and smart cities are properly discussed and the precautionary principle acknowledged within council regulatory processes. If elected I'll continue raising public concerns about councils use of roundup, access to public land and recreation areas and reopening the Maungatapu coachroad and supporting public inquiries into the masonic involvement of subverted public trusts including the Cawthron Park and associated solar observatory and community owned Cawthron Institute.

- dainamic0800@hotmail.com



Harry (Howard) Morris

PEOPLE NOT PARTY

My principal place of residence is in the Nelson City Council – At Large area. I am a father of three adult children that all grew up in Nelson and after 20 years am proud to call Nelson home. I believe I have the skills to communicate with individuals and community organisations, the ability to listen to their needs, and the determination to best represent these at Council. I believe the welfare of its people drives the wellbeing of the city. With a solid business background having owned and run several hospitality businesses for the last 18 years, I am financially prudent and results focused. I want to be part of a progressive, inclusive council that makes well-informed decisions to benefit the community as a whole. I am seeking your vote to represent the best interests of the people of Nelson.

- [f harry4council](https://www.facebook.com/harry4council)
- 027 525 8665
- vote@harrymorris.co.nz



Gaile Noonan

My principal place of residence is in the Nelson City Council – At Large area. Born and raised in Nelson. I have worked hard during my two terms of Council to continue to make Nelson a fantastic place to live and work. My background in legal, insurance and real estate and my connections with the community have been put to good use in my positions as Chair of the Community Services Committee and as a member of Governance, Works and Infrastructure, Regional Transport and Chief Executive Employment Committees. One of the rewarding aspects for me as a councillor is to listen to your concerns and views and then bring those to the Council table. Our decisions need to be what is in the best interest of Nelson and its residents. I continue in my roles as Deputy Chair of Big Brothers Big Sisters, Foodbank volunteer and am an active Rotarian. I would love to represent you again and would very much appreciate your vote.

- [f gaile.noonan](https://www.facebook.com/gaile.noonan)
- [in Gaile Noonan](https://www.linkedin.com/company/gaile-noonan)
- 027 518 8812
- g.noonan@xtra.co.nz



Graeme O'Brien


PUTTING RATEPAYERS
NEEDS FIRST

My principal place of residence is in the Nelson City Council – At Large area. With seven years' experience advocating on issues like live streaming Council meetings,



Councillor Candidates

residents' rights to heat their homes with carbon neutral wood burners and supporting residents who have issues with Council, I have a firm understanding of how Council can be improved. I am a good listener and would welcome your support to be your voice. As a working man, unnecessary Council spending and rates raises causes me great concern. With a forecast net debt of \$178 million by 2024/25, how can we (especially those on fixed incomes) afford it? This city has many issues to address however ratepayers are not an eftpas machine for ill-conceived ideas or fanciful nice-to-haves. I believe transparency of information and a process that is unbiased will get good decisions and if not, accountability to the ratepayer for those decisions. Vote Graeme O'Brien, transparent, fair and common-sense approach to managing our city.

-  **Graeme O'Brien**
- **022 194 2516**
- **graeme4council@gmail.com**

Rohan O'Neill-Stevens

My principal place of residence is in the Nelson City Council – At Large area. My vision for Nelson is a city prepared for future challenges, with a strong, engaged community, an innovative, thriving city-centre, and transparent, effective governance. I want to see council invest in a wider range of transport options, create and enhance community spaces, and take proactive measures to plan for and respond to climate change. I am a strong believer in evidence-based policy and community consultation and will actively work to bring a diverse range of views to the council table. I recently returned from a two-year United World College scholarship in Freiberg, Germany ready to serve the city that I love and was raised in. I believe my younger voice will bring a fresh perspective, along with the ideas and energy required to address the challenges of a rapidly changing future. A vote for me is a vote for Nelson's future. Thank you. More information at:

- **rohanfornelson.co.nz**
-  **RohanForNelson**
- **021 026 84778**
- **contact@rohanfornelson.co.nz**

Pete Rainey

My principal place of residence is in the Nelson City Council – At Large area. I want Nelson to be a better place to live, for everyone who calls this city home – young and old, established families and new comers. This means initiatives such as better public transport, reducing congestion, easing our housing crisis and improving facilities so we can be out there enjoying




Nelson's climate and surrounds. Phillipa and I have two young sons and I want to see more encouragement for innovative businesses so there are jobs here for our young people. As a businessman and a homeowner I don't want to be paying higher rates, but there is a lot council could achieve by using its funds more wisely. Nelson needs a change in leadership style. With my nine years experience on council, I have the energy and commitment to help bring people together, on the Council and in the community, to make this the best place in New Zealand to live.

- **021 747 383**
- **pbrain@xtra.co.nz**

Campbell Rollo

My principal place of residence is in the Nelson City Council – At Large area. Hey, I'm Campbell Rollo I have recently served 2 years as a Nelson Youth Councillor. Coming from a family who know what local business is really like I am committed to working with current and future business within our central city to make sure we bring the spark back. There is need for a young voice to be in the mix of the Council's strategy and decision making and I know I can be that voice. I currently sit on the board of hockey Nelson and sport is a massive passion of mine. I want to work with the sporting & recreation sector to make Nelson an appealing place for large sporting events but importantly having the right facilities in place for our local talents. Nelson needs a council working for everyone. A vote for Campbell Rollo won't be wasted. I want to work hard for our beautiful city.

-  **RolloForNelson**
- **022 192 6352**
- **campbellrollo@gmail.com**



Mike Rutledge COMMITTED TO NELSON

My principal place of residence is in the Nelson City Council – At Large area. You deserve a Councillor who's committed to making Nelson the best little city to live, work, create, study, raise a family and retire. I love my work as a Nelson Councillor. At 35 with a Master of Commerce degree and strong business background, I have the energy and drive to work for a better Nelson. I'm proud of my work as Chair of the Regional Transport Committee. My goal is less congestion and safer roads, building systems that work for people and our economy. I'm a practical environmentalist, rolling up my sleeves to help with community conservation projects. As a keen cyclist, I serve as President of Tasman Wheelers. I believe good governance



matters and am a member of the Institute of Directors. Ratepayers money must be invested cautiously and wisely, eliminating bureaucracy and waste. I'm committed to working hard, listening carefully to our community and delivering for our city.

-  **mike4nelson**
- **021 242 5592**
- **mikerutledge7@gmail.com**

Rachel Sanson

My principal place of residence is in the Nelson City Council – At Large area. As your councillor, I will be a fresh, dynamic and positive voice, helping to shape the future of Nelson. A successful business leader with 20 years governance experience in private, education and non-profit sectors, I'm financially prudent, forward thinking and act on issues with a solutions-oriented approach. I work across political divides, staying focused on what is best for our communities, environment and economy. I have a Master of Commerce degree; am on the boards of Nayland College and Volunteer Nelson; and am a volunteer with Age Connect and Red Cross Refugee Resettlement. I'm part of a large, supportive and outdoorsy Nelson family. My partner of 24 years is a builder and business mentor. Our music-loving son attends Nayland College. I'll work hard to represent you, collaboratively working towards a more sustainable, prosperous and people-centered Nelson, where all are welcome and encouraged to contribute and thrive. Please vote.

- **rachelsanson.nz**
-  **sanson4nelson**
-  **sanson4nelson**
- **021 106 5043**
- **vote@rachelsanson.nz**



Anjela Sharma

My principal place of residence is in the Nelson City Council – At Large area. My name is Anjela Sharma, and I have put myself forward for election on Nelson City Council. My husband and I have resided in Nelson since 1993. We have six adult / teenage children. I operate an employment consultancy, and litigation practice in central Nelson. I have qualifications in law, alternate dispute resolution (mediation / arbitration), workplace investigations, and am near completing a Prof Grad Diploma in Accounting. I'm a trained Registered General / Obstetric Nurse. I'm experienced in collaborative decision making at governance level, from working with local community organisations. I believe that female gender diversity brings balance to strategic collaborative decision making, and driving positive change. My focus includes, but is not limited to –



Councillor Candidates

supporting local business, living near the Nelson Richmond boundary could benefit from more voice, to serve that domain, and highly motivated in maintaining Nelson City Council's good employer image, including the management of its Nelmac employees.

- 027 476 1097
- Anjela.sharma@xtra.co.nz

Tim Skinner

My principal place of residence is in the Nelson City Council – At Large area. I am also standing for Mayor. Tim Skinner is a born & bred Nelsonian with a passion for social justice issues and building a healthy vibrant safe community. As City Councillor he has worked tirelessly ensuring residents needs are heard and communities consulted. He has kept his word in striving to keep rate rises down, and been a strong voice for families around the Council table. With his business skills Tim has consistently championed our council to be prudently minded and supportive of local business & industry. Tim has a strong desire to continue his work as city councillor, ensuring our city is economically strong and an affordable place to live and raise a family for future generations. He is married with four young children,



and successfully built up a professional photography business over 20 years, embraces Nelson's lifestyle, and is a keen footballer. More info on Tim Skinner City Councillor can be found at:

- timskinner.nz
- 021 668 733
- tim@timskinner.nz

Virat Vij
FOR NELSON –
PRESENT AND FUTURE

My principal place of residence is in the Nelson City Council – At Large area. A proud Nelsonian for past 11 years, a father, a husband, a businessmen, an employee, an entrepreneur, a local man with international background working and living in Nelson community for past 11 years and raising a family. I bring 20 years of business and hospitality experience, worked as a teacher, chef and business owner and contributed millions towards local community from international markets. I support local business, schools, colleges and family networks in Nelson, excellent teachers and our caregivers in our aged care facilities and hospital. Local produce and supporting the farmers and local people contributing to our daily life. I'm here to do whatever it takes to keep our local businesses thriving in this difficult times and I want to stand for



education and equal opportunities for woman and all international migrants.

- virat4nelson.co.nz
- f virat4nelson
- 022 096 6085
- virat_vij@yahoo.com

Mike Ward

My principal place of residence is in the Nelson City Council – At Large area. I am also standing for Mayor. I love and care about Nelson and all who live here. We are creative and compassionate. Together we can make this an even more gorgeous, affordable inclusive city, a role model, an inspiring place where we all have choices and make our choices in the interest of our local environment, our wellbeing and our planet. I bring a lifetime of experience and more than twenty years as MP and councillor to the role. and a prudent responsibility to spend wisely as well as the ability to collaborate and communicate. Most of all I am committed to a more gorgeous, fun, sustainable City... but I need your help. Together we can do it and our children deserve nothing less. Nelson the role model? Choice.



- f Mike Ward for Mayor
- 022 035 9175
- mikeward@ts.co.nz

How Drain Smart are you?

Have you done the Drain Smart test at your place? There are three easy checks you can do to see if you are contributing to Inflow, which is one of the causes of wastewater overflows in heavy rain.

Inflow sources allow rainwater to enter the wastewater system directly from the surface through incorrect plumbing, cross connections and damaged or low-lying gully traps or manholes. Make sure you're not adding to the problem! Please go outside your property and check these three things; downpipes, gully traps and sumps.

Downpipes

Look at your roof, where do your downpipes go? They should connect to the stormwater system, not the sewer/wastewater system.

If the downpipes from your roof connect into a gully trap, then you will need to re-direct them into the stormwater system.

Gully trap

A good gully trap has covers and a high surround that stops rainwater/surface water naturally draining into the wastewater system during periods of heavy rainfall. A faulty gully trap will let rainwater/surface water naturally drain into the sewer/wastewater system.

Sumps

A sump is a stormwater feature that collects rainwater from external surfaces such as driveways and patios. The sump has to connect to the stormwater system, not the sewer/ wastewater system. The only way to test for a cross connection without calling a plumber or drain layer is to check for a foul odour that is stronger than a normal organic /vegetation smell.

If you have questions or concerns please contact Nelson City Council on 03 546 0200.





New Nelson Santa Parade organisers excited to be involved

Nelson City Council is excited to announce that events management company EBTAC Ltd has been appointed to run the 2019 Santa Parade.

Council sought expressions of interest from eight event organisations from across the region with Tom Smythe and Claire McLean from EBTAC Ltd selected in line with Council's procurement policy.

The new Nelson Santa Parade organisers are looking forward to bringing the community together for this year's event.

"Claire and I are really excited to be involved this year!" Tom says, "We love

Christmas time and bringing people together is what makes it magic. It's the community feeling that makes it special."

The Nelson Santa Parade Trust, which has delivered the event for the last 20 years, has met with Tom and Claire and offered its full support.

Nelson Santa Parade Trust Chair Roger Wilson says, "We rely mostly on volunteers from the Rutherford Rotary and have seen our members' numbers declining over time making the delivery of the event difficult."

"When the previous parade director moved to Christchurch earlier this year, the Trust felt it was time to hand over the organisation of the parade to new management."

The extensive knowledge, support and connections the Trust has, is being actively shared with the new management.

"We like hearing from the Parade veterans, whose decades of dedication have made this event what it is...magic," Claire says.

Community Services Group Manager Roger Ball is grateful to all the people who help to produce the Santa Parade and cannot wait to see what the new organisers will bring to this year's parade in December.

"It is a huge family event on the Nelson calendar and brings the community together into the city centre for a wonderful celebration," Roger says.

"The Trust has always delivered a great event and I would like to acknowledge the time and effort each volunteer has put into this over the last twenty years."

The Nelson City Council provides \$15,000 per year from the CBD Enhancement Fund for the annual parade.

Please remember to cross the road safely

There are several types of crossings in use around Nelson to try and make it safer and easier for pedestrians to get across the road. However, there is some level of risk associated with all of them. If we all understand our responsibilities when we use them, it will help to keep everyone safe. Here's what you need to know.

Zebra Crossing (Pedestrian Crossing)

Legally, you must use a pedestrian crossing if you are within 20 metres of one.

Pedestrians: Pedestrians, stop, look and listen. It's not your right to step straight out onto a pedestrian crossing and expect a vehicle to stop. Never assume that drivers have seen you at the crossing. Make eye contact with a driver (if possible) before crossing; and when they do stop, give them a smile.

Drivers: The law requires drivers to give way to pedestrians on both sides of all pedestrian crossings unless the pedestrian crossing is divided by a traffic island. Look for pedestrians. Slow down and be prepared to stop.

Pedestrian Refuge Islands

Pedestrians: Pedestrian refuge islands are designed to give you a chance to cross a street in two stages. The refuge gives you a safer place to wait before making the second stage of the crossing. So think before you step: these refuges are not zebra crossings. It is your responsibility to cross only when there is a break in the traffic.

Drivers: At pedestrian refuges, drivers do not have to stop for pedestrians, but must

be able to stop if you have to. Stopping for pedestrians using refuges islands creates a hazard for following vehicles.

Courtesy Crossing

Courtesy crossings or raised platforms are not official pedestrian crossings. The changed surface alerts drivers to reduce their speed and to be aware of pedestrians.

Pedestrians: Don't just step out onto the crossing. Have a look first, make eye contact with drivers and smile. It's about courtesy, let cars cross if they've been waiting awhile.

Drivers: Go slow, smile and remember that pedestrians are fragile. It's about courtesy, let pedestrians cross if they've been waiting for a while.

Kea Crossing

Pedestrian crossings are well understood by walkers and drivers alike, but the 'kea' crossings used near schools aren't so well understood. Unlike normal pedestrian crossings, kea crossings do not have 'zebra' stripes on the road and are only operational during part of the day: the start and end of the school day, and sometimes during the lunch hour. When a kea crossing is operational, it acts like a pedestrian crossing.



Zebra Crossing (Pedestrian Crossing)



Pedestrian Refuge Islands



Courtesy Crossing



Kea Crossing



Björk: All is Full of Love

Brand new theatre and high-energy music – the 2019 Nelson Arts Festival, plenty to see

There are lots of special happenings at the 2019 Nelson Arts Festival, including three incredible theatre pieces.

The first is a world premiere about renowned New Zealand Arts Foundation Icon Photographer Ans Westra. Westra came to prominence in the 1970s when she wrote and photographed pictures for school journals, including the controversial *Washday at the Pa*. Golden Bay writer and actor Martine Baanvinger has created *Aperture*, set at the beginning of Westra's career. Next up is *Mr Red Light*, which has just premiered in Auckland to rave reviews. If you like your comedy fast-paced, absurd and very dark – then this new production will have you laughing out loud at the antics of a failed bank robber and his three hapless hostages, all bailed up in a pie shop. And one of the quieter nights at the festival will be *Portraits in Motion*, where German traveller Volker Gerling shares his collection of flipbooks. Projected onto a big screen, each flipbook has a series of 30 photos, recreating an enchanted moment in time. One of the big productions of the

Festival is an extravagant tribute to the Icelandic queen of pop. **Björk: All is Full of Love** features a 10-piece chamber orchestra, elaborate costumes, spellbinding projections, and acclaimed singers Anna Coddington, Mara TK and Priya Sami. Whether you're a Björk fan or not, this show will be pure bliss. If you like your music more upbeat, there are two international acts to encourage your best dance moves. Our furthest travelling artists are **Shooglenifty** all the way from Scotland. Having played together for nearly 30 years, the Shoogles continue to bring new life, energy and world-music influences into their Celtic-folk style. And for some outside dancing and a whole heap of fun, join us at Neudorf Vineyards for the return of **Mighty Duke & The Lords**. The super-cool grooves of these retro dudes will have you smiling and dancing throughout the afternoon.

nelsonartsfestival.nz

What is the problem with Taiwan Cherry?

It is now illegal to sell, propagate or distribute Taiwan Cherry in the Nelson Tasman region.

People often ask why we are trying to eradicate Taiwan Cherry (*Prunus campanulata*) from our local environment, as it appears to be a pretty tree that provides food for birds and insects. The reason it is treated as a pest is because it quickly dominates and destroys our native trees and ecosystems.

We appreciate that these trees are attractive and that they draw in tui and bees, but these benefits are far outweighed by the disastrous ecological impacts this tree will have on our indigenous scrubland and forest ecosystems if left to spread. We have a chance to control it now – otherwise it will start to take over some of our native habitats and impact on our biodiversity. We need the support and cooperation of our local communities to achieve this goal.

Taiwan Cherry is a deciduous species of cherry tree native to Taiwan. It's a relative newcomer to the Tasman-Nelson region, with the first trees being introduced during the mid-1960s. It's been a popular garden exotic over the last 20 years.

From late July through to early September, mature trees produce thousands of dark pink flowers that attract pollinators such as bees and tui.

The fruit is eagerly sought by birds such as wax eyes, starlings, blackbirds and native pigeons, which spread them to other areas. Other animals, such as possums and pigs may also spread the seed in the same manner. The seeds have a particularly high germination rate which makes it easy for them to compete with native seedlings.

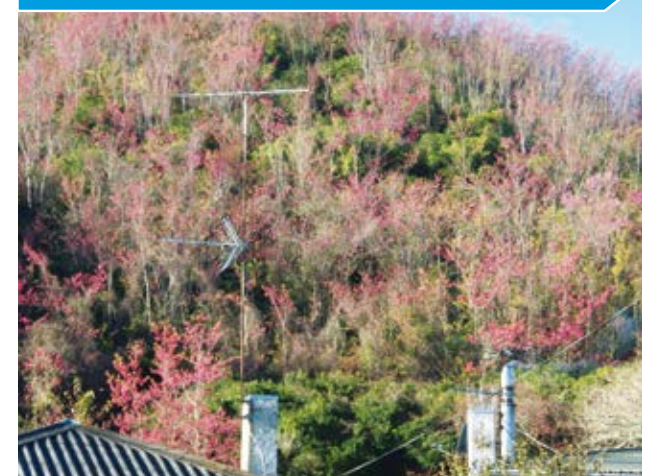
A local example

In Dodson Valley in north Nelson, Taiwan Cherry spread at an alarmingly rapid rate from one single tree in a private garden to the surrounding hillsides, where it took over the native vegetation. This infestation has been bought under control by contractors at considerable expense, so that native trees can once again establish.

What can you do?

We're asking people to let us know if they see a Taiwan Cherry tree growing, or know where they have been planted in the past where seedlings may still be germinating. If there has been a tree in your area, keep any eye out and let us know if you see any young seedlings. You'll find info on how to control the trees on our website, nelson.govt.nz/taiwan-cherry.

To report a Taiwan Cherry tree or for further information phone the Tasman District Council on 03 543 8400 or the Nelson City Council on Ph 03 546 0200.

nelson.govt.nz/taiwan-cherry




Public access through private land now closed

Thanks to the generosity of the landowner, the public has long been allowed access through the farm above Atawhai, which runs along the ridgeline between Bayview Road and Council’s Botanical Hill Reserve (Centre of NZ).

The landowner is now planning works to remove gorse, upgrade fencing, and carry out pest control. The work being carried out includes several potential hazards, so it is a significant safety issue. We now urge everyone to respect that access is no longer permitted and stay out of the area.



ROAD CLOSURES

Proposed closures

Applicant: Higgins
Event: Trafalgar Street Bridge Maintenance
Location: Trafalgar Street between Halifax Street and Grove Street
Date and time: Sunday 6 – Friday 18 October 2019, Closed all day and all night

Applicant: Higgins
Event: Road Maintenance
Location: Putaitai Street and Neale Ave between Songer Street and Andrew Street
Date and time: Monday 7 – Friday 18 October 2019, during the day and night works from 6pm to 7am

Applicant: Higgins
Event: Road Maintenance
Location: Market Road between Bishopdale Ave and Gardiner Place
Date and time: Thursday 10 – Friday 18 October 2019, night works from 6pm to 7am

Applicant: Higgins
Event: Road Maintenance
Location: Brougham Street between St Johns Drive and Rutherford Street; Bronte Street between Collingwood Street and Scotland Street
Date and time: Sunday 13 – Friday 18 October 2019, 7am – 6pm

Feedback date for proposed closures:
Wednesday 2 October 2019
Email: enquiries@ncc.govt.nz
Post: Nelson City Council, PO Box 645, Nelson, 7040. Attn: Gillian Dancey.
For all road closure information visit:

nelson.govt.nz/road-closures



MEETINGS

The following meetings of the Nelson City Council have been scheduled.

Council meeting	
9am	19 Sep
Council meeting	
9am	26 Sep

- Notes:
1. Unless otherwise shown, the meetings will be held in the Council Chamber, Civic House, Trafalgar Street, Nelson.
 2. A public forum is held during the initial period of the Committee/Council meeting. Anyone wishing to speak at this public forum is asked to give prior advice to the Governance Advisers on 546 0200.
 3. Agendas and minutes for Council meetings can be viewed on Council’s website nelson.govt.nz.

nelson.govt.nz/meetings

GRAB A
FREE BIKE.
HELP FIX IT UP.
TAKE IT HOME.
IT’S YOURS
TO KEEP.

SATURDAY SEPT 28TH
9AM-12PM SAXTON FIELD

Please register by emailing Kym Smith at: kym.smith@ncc.govt.nz



What's on at the Libraries?



School holiday fun!

A discovery of birds to celebrate Save the Kiwi month!

Make Toolboxes with Mitre 10

Monday 30 September, 11.00am and 11.45am at Elma Turner Library. For ages 4+ with parent help. Bookings required.

Bird Themed Crafts and Activities

Tuesday 1 October, 10am–12pm at Stoke Library. Pop-in session. For any age. No bookings needed.

Play with our New Lego Robotics

Wednesday 2 October, 10.30am–12.30pm at Elma Turner Library. Gold coin for donation to Save the Kiwi. For ages 10+. Bookings required.

Board Games

Wednesday 2 October, 2–4pm at Elma Turner Library. For ages 12+. No bookings needed.

Bird Themed Crafts and Activities

Thursday 3 October, 1.30–3.30pm at Elma Turner Library. Pop-in session. For any age. No bookings needed.

Play with our New Lego Robotics

Friday 4 October, 10.30am–12.30pm at Elma Turner Library. Gold coin for donation to Save the Kiwi. For ages 10+. Bookings required.

Makerspace – Make a Bird Feeder

Monday 7 October, 11am at Elma Turner Library. Any age. No bookings needed.

Bird Themed Crafts and Activities

Wednesday 9 October, 11am–1pm at Elma Turner Library. Pop-in session. For any age. No bookings needed.

Family Movie and Popcorn

Thursday 10 October, 1.30pm at Elma Turner Library. Any age. No bookings needed.

To book, email library@ncc.govt.nz or phone 03 546 0414.

Emerald Noir

Leading Irish crime writer Liz Nugent in conversation with local journalist Amy Ridout. Nelson Public Libraries, in association with the Ngaio Marsh Awards, is delighted to be hosting Liz Nugent at an author talk at the Elma

Turner Library. Liz grew up in Ireland during the 'troubles' in the 1980s and currently lives in Dublin. She is an award-winning novelist, writing dark literary psychological thrillers with strikingly original characters. She was named Irish Woman of the Year in Literature in 2017 and her novels (*Unravelling Oliver*, *Lying in Wait* and *Skin Deep*) have won awards and been translated into 14 languages. Come and hear Liz in conversation with local journalist Amy Ridout, who has lived and reported from all over the world. The talk, supported by Page & Blackmore, will be at 2pm Saturday 5 October. Free admission and all welcome!



WHAT'S ON... at a Council venue near you



Kirby Lane

Nelson Farmers Market. 8.30am – 1.30pm, Every Wednesday.
Nelson Dawn Rave. 6am – 9am, Friday 4 October.

Saxton Stadium

NZSS Netball Championships, Tuesday 8 – Friday 11 October.
Super Saxton HIIT. 9.15am, Every Monday, Wednesday & Friday. 7.30am, every Tuesday & Thursday.
Saxton Seniors. 9.30am, Every Tuesday & Thursday.
Senior Core Balance. 10.15am, Every Monday.
Mummy Tummy Fitness & No More Mummy Tummy. 10.15am, Every Wednesday.
EvolveFit. 5.45pm, every Monday & Thursday. 9.15am, every Friday.
Bootcamp. 8.30am, every Saturday.

Saxton Pavilion

Tai Chi – Beginners. 10am, every Thursday
Tai Chi – Intermediate. 11am, every Thursday.
Dru Yoga. 10.30am, every Monday.
Yoga with Loren. 5.45pm, every Thursday & 12pm, every Friday.

Saxton Hockey Turf

Hockey National Championships. 29 September – 6 October

Trafalgar Centre

Rock da House. 6.30pm, Tuesday 17 – Thursday 19 September.
Cawthron Scitec Expo 2019. 10am – 4pm, Tuesday 24 & Wednesday 25 September.
House of Travel Expo. 10am – 4pm, Saturday 28 September.
Devilskin. 7 – 11pm, Sunday 6 October.

Trafalgar Park

Tasman Mako vs Auckland. 7.35pm, Friday 27 September.
Tasman Mako vs Northland. 2.05pm, Sunday 6 October.

Founders Heritage Park

Founders Artisan Open Day. 11am – 2.30pm, Sunday 22 September.

Isel House and Park

Bloom – Flower and Garden Festival 2019. 11am – 3pm, Sunday 6 October.

Isel Twilight Market. 4.30pm, Every Thursday starting 10 October.

Miyazu Gardens

Nelson Cherry Blossom Festival. 11.30am – 3pm, 22 September

Nelson Public Libraries

Elma Turner Library

Small Time at the Library. 11.30am, every Monday, & 10.30am, every Wednesday.

Story Time at the Library. 2pm, every Thursday.

Library Knitters. 10am – 12pm, every Thursday.

Device Advice. 10am, every Tuesday & 2pm, every Thursday.

Junior Book Club. 3.30pm, every Tuesday.

Tea & Talk. 10am, every Friday.

Justices of the Peace. 10am – 12pm, every Saturday.

Young Adult Reading Club. 3.45pm – 4.45pm, Wednesday 18 September & 16 October.

Learn in the Library – adult classes. 9.30am – 11am, Thursday 19 September.

DBH Stop Smoking Service. 11am, Thursday 19 September.

Bike Maintenance Workshop. 10am Saturday 21 September

Nelson Future Access Project Information – Community Corner. 3pm, Monday 23 September & 7 October.

STEMWriters at Nelson Libraries. 1pm, Tuesdays 24 September & 8 October.

Alzheimer's Nelson. 10am, Wednesday 25 September.

LEGO Drop-in. 3.30pm – 5pm, Last Thursday of Month, 26 September.

Live Music Series – Off your Rockers. 2pm, Sunday 29 September.

Friends of the Library Book Sale. 10am, Saturday 5 October.

Emerald Noir – Irish crime writer Liz Nugent in Conversation with Amy Ridout. 2pm, Saturday 5 October.

Nelson Institute Talk. 2pm, Sunday 6 October.

Book Chat. 10.30am, Tuesday 8 October.

Nightingale Library Memorial

Nellie Knitters. 1.30pm, every Monday.

Story Time at the Library. 10.30am, every Thursday.

Stoke Library

Small Time at the Library. 10.30am, every Tuesday.

Story Time at the Library. 10.30am, every Wednesday.

Device Advice at Stoke Library. 2pm, every Wednesday & 11am Every Friday.

Alzheimer's Nelson. 10am, Thursday 26 September.

Book Chat – Stoke. 5.30pm, Wednesday 18 September & 16 October.

Young Adult Reading Club. 3.45pm – 4.45pm, Tuesday 15 October.

Museums and Galleries

The Suter Art Gallery & Theatre

Hours: 9.30am–4.30pm Daily
NSAS Spring Exhibition. Wednesday 28 August – Sunday 22 September.

Alexis Neal and Elke Finkenauer: Something to Remember. Saturday 15 June – Sunday 6 October.

Aratoi: Our Journeys to Aotearoa. Saturday 15 June – Sunday 13 October.

Jay Hutchinson: the archaeology of the discarded, forgotten and thrown away. Saturday 21 September – Sunday 1 December.

Ledlenser Trails In Motion 7 Film Tour. 6.10pm, Friday 20 September.

Big Brother Big Sisters Movie Night Fundraiser – Mia and the White Lion. 6pm, Wednesday 25 September.

NZ Costume and Textiles Symposium. Friday 27 – Sunday 29 September.

Refinery ArtSpace

Hours: 10am – 5pm Monday – Friday, 11am – 2pm Saturday

'Bildungsroman' – Areez Katki. Tuesday 3 – Thursday 29 September.

'RAW' Showcase. Tuesday 1 October – Thursday 31 October.

Nelson Provincial Museum

Hours: 10 – 5pm Weekdays, 10am – 4.30pm Weekends & Public Holidays.

Kura Pounamu – Our Treasured Stone. Saturday 24 August – Sunday 24 November.

TE HEI TIKI. 5.30 – 6.30pm Tuesday 15 October.