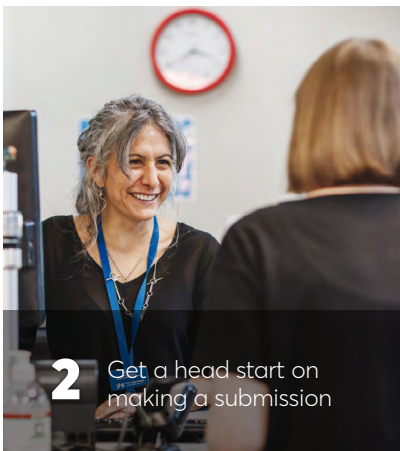


OUR NELSON

TŌ TĀTOU WHAKATŪ

Issue 142 • 6 April 2022

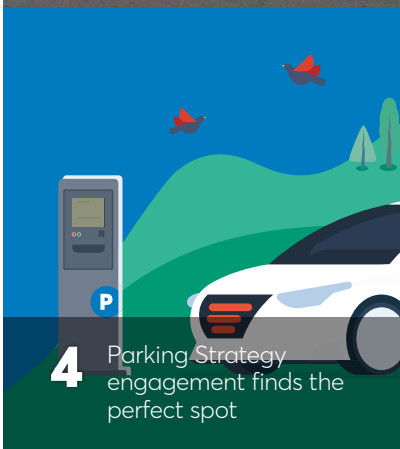
Keep up to date with the latest news from Nelson City Council



2 Get a head start on making a submission



3 Bespoke solution: Pride bike shelters safe and inclusive



4 Parking Strategy engagement finds the perfect spot



6 50 spots available on low waste parenting course for Nelson residents



Credit: Lumiere

Nelson's new library is yours to shape

It's nearly time to shape your new library. What should happen inside its doors?

Nelson City Council is launching a major engagement campaign seeking the views of Nelsonians on what their new library should include.

Popular core services are here to stay, but do you have a bright idea to enhance them? What new features and services could be introduced to make the new library stand out from the crowd?

Nelson Mayor Rachel Reese, says the engagement, which starts on April 21, will ask what a modern library should contain and what it means to our community.

"The Elma Turner Library has served Nelson really well, but it's now time to consider how the services

and facilities within this new library can meet the demands of our growing City."

"We want ideas for an enticing place for our community, with all the services you expect from a library and much more."

Mayor Reese says Council wants to hear from all parts of the community, from everyday library user through to those who don't think libraries are for them.

"This engagement process provides an important platform for people from every corner of Nelson to have their voice heard."

"This is your chance to tell us what they want to see inside a modern library. We want to have a genuine conversation about new services and features that will make this place stand out from the crowd."

The extensive public engagement campaign will last for eight weeks.



To keep up to date with this project head to shape.nelson.govt.nz/shape-your-library





Get a head start on making a submission

The library engagement team is here to help. If you or someone you speak to has a question about the library or needs help making a submission, get in touch using the contact details below and we will do everything we can to assist you.

Timeline

Here's what has happened so far, and what is planned to happen next.

May - December 2019

- Early engagement on what the new library should be like
- Lack of community spaces established

March/April 2021

- Library development included in consultation for Long Term Plan 2021-31

May 2021

- Elected members approve new library development on the corner of Halifax and Trafalgar streets.

2021 - 2023

- Community engagement on new library facilities and services
- Investigation/Design
- Consenting
- Property negotiations

2023 - 2025

- Construction of library on the corner of Halifax and Trafalgar Streets

2026 - 2027

- Code compliance
- Relocation to the new library



Credit: Lumiere



Credit: Lumiere

Get in touch



Online at shape.nelson.govt.nz/shape-your-library or via email (shape.your.library@nelson.govt.nz)



In person at **Nelson Public Libraries** or the **Customer Service Centre** on Trafalgar Street



By phone at call **03 546 0200** and ask to speak to the Library Engagement Team



Post to **Library Engagement Team**, 110 Trafalgar Street, Nelson 7010





Bespoke solution: Pride bike shelters 'safe and inclusive'

Councillors have resolved to progress with the installation of pride decals on both the Trafalgar Street and Montgomery Square bike racks at the Infrastructure Committee meeting held on 31 March.

The decision recognises the rainbow community in Nelson, while keeping the City Centre safe and accessible for those in the community that are blind or have low vision.

Pride Nelson committee member Daniel Jackson from Pride Nelson spoke at public forum in support of the bike shelter option, saying the rainbow community want a solution that works for everyone.

"Pride Nelson spoke with representatives of the blind and low vision community, and our members overwhelmingly supported a solution that recognises the rainbow community but doesn't negatively impact other minority groups.

"We want this to be something that is safe and inclusive for everyone. We don't want to exclude, or create barriers for, any other part of the community, especially another marginalised minority community.

"We are excited about the bike shelters. We think they will be a visible symbol of queer pride in Nelson."

Infrastructure Chair Brian McGurk says he is proud to have this recognition and celebration of our rainbow community featured prominently in our City Centre.

"The blind and low vision community raised concerns about new colours and lines on the ground where they are navigating and walking. Decals on

bike shelters will be a good way of supporting the rainbow community in Nelson without impacting on blind and low vision citizens."

Council staff and elected members consulted with key stakeholders, including representatives from queer and rainbow groups, blind and low vision citizens, the police, and City Centre representatives, on the best location for visual support of the LGBTQI+ community.

The installation of the pride decals on Trafalgar Street and Montgomery Square bike racks has an estimated cost of \$8,000.



Mayor's Message

Time for Te Taihū o te Waka a Maui to Get Together

One of the things highlighted by our response to COVID-19 was that when serious issues arise in our community it is up to us to take responsibility locally for planning a response and getting action underway.

Central Government can set the framework, but the 'how' and 'by whom' needs to be delivered in a way that meets the needs of our people.

Our extended region at the top of the South Island – Te Taihū o te Waka a Maui – Nelson, Tasman and Marlborough – exists to some extent in splendid isolation at the top of the island, and while everyone is familiar with our scenic beauty and our fine natural products from the land and the sea, it is all too easy for our voice to get lost on the national stage.

For all our strengths, our combined population is around the size of Tauranga, and as a combined region we form around 3% of the country's population.

The good news is that we punch above our weight in terms of economic activity, producing around 5% of New Zealand's GDP. The Nelson Tasman economy is one of the fastest growing parts of New Zealand with plenty of potential to lift productivity through innovation and collaboration.

However, I do think it is time for the three individual parts of

the region to work together to formalise our partnership with Iwi to form a regional collective to represent our region.

We have a lot at stake in terms of the environment and creating a strong community and economy for future generations.

We need to build on the work of the Te Taihū Intergenerational Strategy, especially as the Government is pressing for the development of regional leadership structures.

Let's be clear, I'm not proposing another committee. We need a group with strong governance and leadership to provide a platform for robust discussion of important issues.

Our challenge is to respectfully get across and celebrate our individual communities, while at the same time embracing the higher objective to strongly represent ourselves.

We have an excellent example with the success of our Tasman Mako alongside many other activities.

Now is the time to take this to another level to make sure our voice is heard where it counts.

Ngā mihi



Update on Maitahi Bayview Private Plan Change 28

Nelson City Council received more than 650 submissions following the Maitahi Bayview private plan change public notification on 28 October 2021.

All submitters have now been advised that the hearing for Private Plan Change will occur between 13-22 July 2022.

The application for a private plan change will be heard in front of a panel of independent, accredited commissioners: Greg Hill (Chair), Sheena Tepania, Gillian Wratt and Nigel Mark-Brown.

A pre-hearing process for alternative dispute resolution is available to those submitters who wish to present at the hearing and/or engage experts on their behalf. This process allows for a less formal resolution to as many issues as possible ahead of the hearing.

The timeframes and requirements for the pre-hearing process are set out in the Direction from the Commissioner, and further information can be found at shape.nelson.govt.nz/private-plan-change-28-maitahi-bayview

Help with RMA hearing submissions

An independent planning consultant is available to submitters who require help and advice understanding the Resource Management Act (RMA) hearing preparation and presentation process. The 'friend of submitters' consultant can give advice on:

- Pre-hearing meetings (preliminary meeting and expert conferencing)
- The hearing process
- The submitter's role in the hearing
- How best to present an RMA submission at a hearing
- The role of experts in the hearing
- Discuss (where appropriate) joining other submitters to collectively present submissions.

Please contact Emily Bayliss directly to access this service: Phone 021 0814 2991 or email emily@baylissconsulting.co.nz



Parking Strategy engagement finds the perfect spot

Nelsonians will soon be able to give feedback on a Draft Parking Strategy that builds on and aligns with Nelson City Council’s goals for sustainable transport, climate change and a people-focussed region.

A four-week engagement process, starting 11 April, was approved unanimously by Council’s Infrastructure Committee 30 March 2022.

The Strategy, complemented by more detailed Parking Management Plans (PMPs) for Nelson City Centre, Stoke and Tāhunanui, is a 10-year framework that will guide consistent and transparent decisions around the management of on-street and off-street parking throughout the city.

Infrastructure Chair Brian McGurk says most decisions around parking involve managing competing demands for space both on-street and off-street.

“People have different opinions about how the space on our streets should be allocated and managed, and we also have to consider the legacy of communities designed solely for car use, which currently leaves some people with little choice other than to use a private vehicle to get around.

“Changes to parking management occur at the same time as improvements to alternative

ways to travel – such as improved buses coming in 2023 and improved walking and cycling links. Meanwhile, the strategy sets a framework that ensures those in most need of parking (accessibility parks/loading zones) are catered for, and the parking available for others is more fairly priced.

The Strategy includes data showing Nelson currently has enough parking supply to meet visitors’ needs even during peak hours. For example, City Centre average occupancy was recorded at 75% at 1pm on a weekday, the busiest time in the City.

Data did show that parks on city fringe streets were being used by commuters working in Nelson. The Strategy includes several ways of addressing this situation, including managing the use of time restrictions, extending paid parking, and improving public and active transport options.

Councillor McGurk says the Strategy strikes a balance between current demand for parking and the shift to more sustainable

transport modes on the horizon.

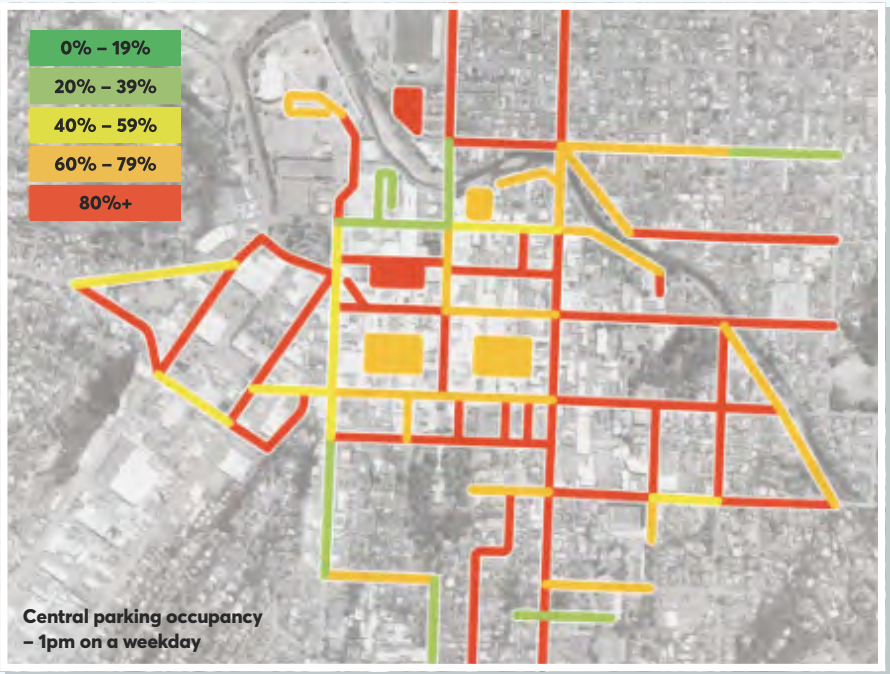
“Parking management is one lever we can use to help meet goals related to our City Centre, sustainable transport and climate change. This isn’t about changing things overnight, but it is a foundation for gradually moving towards a more people-focussed city, with genuine sustainable transport options.

“Pre-engagement highlighted congestion as a bigger problem than availability of spaces. Good parking management can keep our roads clear by reducing time spent searching for parks, which has a positive effect on reducing emissions.”

The Strategy sits alongside the concept of a people-focussed City outlined in Te Ara ō Whakatū – Nelson’s City Centre Spatial Plan, more frequent public transport services from 2023, and an ever-increasing network of shared pathways and cycle lanes.

To read the full strategy and make a submission from 11 April, please visit shape.nelson.govt.nz/parking-strategy

Nelson Parking in numbers:



- City Centre average occupancy at peak time: **75%**
- City Centre parking spaces: **1472**
- City Centre fringe spaces: **2390**
- 5600 people work in Nelson’s City Centre
- Plus **3000** students at NMIT
- City Centre Residents now: **100**
- Potential city centre homes in 30 years: **800**

Proposed objectives for managing parking in Nelson:

- Supports shift to more sustainable transport modes and reduced transport related carbon emissions;
- Supports a people-focused city;
- Supports inclusive access;
- Supports economic development;
- Supports a safe and efficient transport system; and
- Is valued and managed efficiently





Climate Action

5, 4, 3, 2, 1 - Mission Zero launched

Mission Zero a new initiative launched by Businesses for Climate Action, a local trust dedicated to helping businesses adapt to the challenges and opportunities of climate change. Chief Action Officer Jodie Kuntzsch tells us more.

For many businesses in our region, climate change can seem big, confusing and complex. This is on top of the already urgent, competing demands of day-to-day operations. Most businesses we speak to have good intentions to reduce emissions but lack resources to figure out how to do so or where to start.

Although we don't know the exact effects of climate change, we can be certain that every business and community will be impacted by it. Businesses have the choice of whether to participate in the transition to net-zero emissions or be left behind. Those that choose to embrace the opportunity to transition away from fossil fuels are more likely to thrive in our future economy.

So, we decided to launch Mission Zero, which brings together our local businesses on a collective journey to decarbonise our economy, creating huge value for our businesses and our region. Whether just starting out or already certified carbon zero, we all form part of this collective mission.

Our message? Start with one thing. If we all find one step that is achievable and viable for our

businesses, we can make huge progress across the region. You don't need to have all the answers to start, and you certainly don't need to be perfect to make a difference. Simply reducing waste and using alternative transport are great ways to get started.

Understanding our carbon footprint and reducing emissions doesn't have to be a laborious or quantitative exercise for every business. Most businesses can identify low-hanging fruit (for example, through transport, energy and waste savings) without any external expertise. For those that want and need more precision, certification pathways (including zero carbon, B Corp and customer-driven schemes) can benefit the efficiency of their operations and potential market recognition.

Our approach through Mission Zero is to ensure that whether businesses are after insights and inspiration, tips and tricks, capability development, collaborators for infrastructure level projects, or just want to talk to someone, we are here to help.

Find out more at missionzero.nz.



Businesses for Climate Action, Chief Action Officer Jodie Kuntzsch



Half-price public transport fares

From 1 April – 30 June 2022, you can enjoy half-price fares on all NBUS trips.

The discounted fares apply whether you use Bee Card or pay in cash.



For real time bus updates scan the QR code or go to: nelson.trackabus.co.nz



Nelson City Council | Te Kaunihera o Whakatū



tasman district council | Te Kaunihera o te tai o Aorere



1/2 price





Remembering Margaret Paul

A former Curator of Broadgreen Historic House, Margaret Paul, has died.

As Curator from 1978-2014, Margaret led the preservation and cataloguing of the historic collection and developed the heritage tourism service at Broadgreen. She also spent five years as a volunteer prior to that.

The Chair of Broadgreen Society, Mary Gavin, remembers Margaret and her incredible influence on the development of Broadgreen Historic House.

"As the Curator of Broadgreen Historic House Margaret had an unwavering commitment to preserving and communicating the unique history surrounding the House, its families and its artefacts," says Mary.

"Margaret also had a strong sense of responsibility and accountability towards the donors of the Victorian and Edwardian textiles

and artefacts which furnish the House and she was meticulous about researching and displaying them in an authentic setting. This is reflected in the attractive and accessible way that Broadgreen House is presented to the public today."

"Over forty years, Margaret trained more than 200 volunteer guides and empowered them to provide a well-informed heritage tourism service. Her legacy is that many of these guides continued to volunteer at Broadgreen Historic House for significant periods, some for over 20 years, thus carrying on her commitment to honouring our local heritage."

Broadgreen Historic House on Nayland Rd, Stoke, is a Victorian era home built in 1855. It was bought by the Nelson City Council in 1965.



A new kind of 'zoom' meeting: city bike tour explores solutions for safer cycling

Bicycle Nelson Bays hosted Nelson City councillors and Council staff on a bicycle tour of the City to explore what works and what doesn't when it comes to safe cycling in Nelson.

The group stopped at spots along the route to discuss issues faced by cyclists and pedestrians and solutions that would enable more Nelsonians to start cycling.

Discussions also touched on how solutions for safer cycling should fit in with the needs of other

road users.

Youth councillors from Nayland College joined Bicycle Nelson Bays on a previous tour of the City. A future bike tour will see Nelson MP Rachel Boyack and other Nelson City and Youth councillors come along for the ride and discussion.

Councillor's Comment

How does the future of Nelson and local businesses look?

While central Government have made changes to the traffic light system (in relation to COVID-19) to enable the country's borders to reopen, unfortunately for Nelson's tourist reliant businesses no uptick will occur for at least two months. Furthermore, businesses have not been able to save buffers during the summer session to get them through winter, as per normal business practice.

Nelson City Council has extended rent relief for outdoor dining, stallholders/ concessions through to November 2022. However, this doesn't cover lost business 'as usual' revenues and excludes many cafes, bars, and restaurants and other types of retailers and businesses. Council does utilise resources such as Uniquely Nelson and the Nelson Regional Development Agency to promote businesses/events. As for the businesses themselves – they are limited in staff capacity or funds and running on empty.

As your elected representative, I ask all Nelson residents to break your normal winter hiatus and join me in supporting local businesses over the coming winter. Encourage your friends and relatives to visit the region and let's collectively help Nelson to thrive as a region with your local support.



Councillor Trudie Brand

Democracy is precious

To protect democracy, it's important that everyone takes the opportunity to have their say.

At the last council election more than 46% of enrolled electors didn't vote. This included more than one-third of under 35's – this is concerning.

When voting this year, you need to know Nelson City Council have changed the voting system to STV (single transferrable vote).

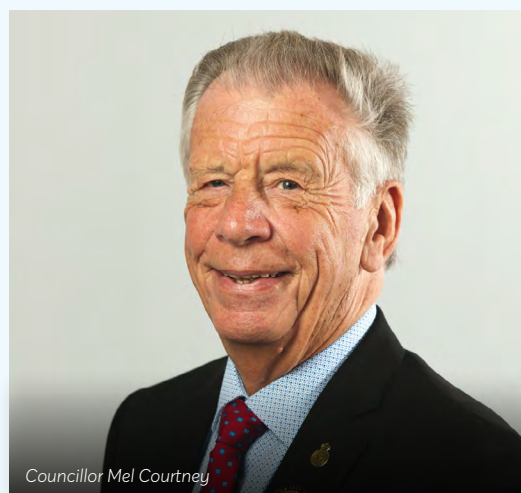
This means you are now able to list the candidates you most want to represent you and be your voice on council in order of your preference.

Council has also changed to a ward system of voting. If you are on the general electoral roll, you will be able to vote for candidates (by ranking in your order of preference) in one of the General wards, depending on where you live. If you are on the Māori electoral roll you will be able to vote for candidates in the Whakatū Māori Ward which includes the whole of Nelson.

As well as your ward councillors, you will also be able to vote for some councillor positions regardless of where you live, or which roll you are on – these councillors are called "at large".

Everyone will also be able to vote for the Mayor by ranking as many of the Mayoral candidates as they wish to.

Democracy is about voting--voting documents will be delivered in late September and voting closes 8 October. Please take the time to vote.



Councillor Mel Courtney

50 spots available on low waste parenting course

Council and Rethink Waste Whkaarohia are subsidising 50 spaces for Nelson residents who want to learn how to create less waste with babies and toddlers at home.

Hosted by Waste Free with Kate and Co, the course takes attendees through the 'whys' and 'hows' of waste minimisation for parents. The online course includes a cloth nappy starter pack worth \$80.

The low waste parenting course is all online, so you can learn at your own pace from home, with videos and articles to guide you through topics like: recycling, wastewater, feeding and baby food, cloth nappies 101, and more.

It costs \$21.80 to register. Nelson residents can sign up for the course at:


katemeads.co.nz/products/nelson-low-waste-parenting-online-course-includes-80-gift-bag



Conewatch

Nelson City Council is constantly upgrading infrastructure in our City.

Whenever you see traffic cones, it's likely Council is improving our water, wastewater and stormwater network, transport links, parks and reserves or publicly-owned buildings. Here's the work we've just completed and what's happening right now.

Completed

Project Name	Blurb
Athol Street SW upgrade	Completed 3/3/22. Stage 2 scheduled for May.
Airlie Street	
Gloucester Street	Completed 28/02/2022.

Ongoing

Project Name	End Date (if known)	Location	Benefit
Haven Road Stormwater Realignment	late April 2021	Haven Road and Vickerman Street	Improve stormwater
Residential Meters Renewal	April 2022	City wide	Accurately measure water usage
Saxton Creek Upgrade Stage 4	June 2023	Main Rd, Stoke	Flood mitigation
Modellers Pond Redevelopment	June 2022	Tahunanui Reserve	Create Coastal family Play area
Bellevue Heights Stormwater Upgrade	30 March 2022	Bellevue Heights, Tahunanui	Improve stormwater
Washington Valley Infrastructure Upgrade – Stage 1 (Hastings Street)	Early November 2022	Hasting Street	Improve stormwater network and reduce flooding risk
Maitai Recreation Hub	Mid May 2022	Maitai Valley Road	Recreation Hub, Pump Track, off road cycle way, new carpark
Awatea Place Wastewater Pump Station	September 2022 (TBC)	Awatea Place & Parkers Road	Improve wastewater capacity and reduce overflows
Millers Acre Recladding	Marchary 2023 (TBC)	Millers Acre buildings	Improve building waterproofing
Haven Road – Sewer Renewal	18 March 2022	Haven Road and Russell Street	Improve the wastewater network

Funds available for heritage buildings

Owners of heritage buildings, objects or sites listed in the Nelson Resource Management Plan can now apply for funding to help with the cost of work to conserve Nelson's history.

Applications for the 2022/2023 Heritage Project Fund grant round must be submitted by 5pm, Friday 6 May, for grants of \$1000 or more towards the cost of approved projects.

The grants can be used for work like stabilisation, repair or restoration of original heritage items, such as improving masonry, joinery, earthquake strengthening or fire protection. It can also be used for professional services relating to heritage research, and conservation plans.

Council has already been in contact with owners of A, B, or C heritage buildings to let them know they can apply.

Work carried out using grants funding must meet Nelson City Council and Heritage New Zealand approved standards.

Find out more about heritage funding and apply online on the Nelson City Council website.

nelson.govt.nz/heritage-grant

 MEETINGS

Community and Recreation Committee

9am12 Apr

Tenders Subcommittee

9am13 Apr

Urban Development Subcommittee

9am14 Apr

Chief Executive Employment Committee

10am22 Apr

Joint Committee Subcommittee - to hear submissions to Future Development Strategy (if required) - Tasman District Council Chamber, 189 Queen Street, Richmond

9am-4pm (each day)27 Apr 22 (Day One)
28 Apr 22 (Day Two)
3 May 22 (Day Three)

Changes to meetings

Environment and Climate Committee, previously advertised to take place on 7 April 2022 at 9am will now commence at 11.30am

For a full list of meetings go to:

nelson.govt.nz/meetings

To sign up for Our Nelson by email go to:

 facebook.com/nelsoncitycouncil



Founders Heritage Park is cleaning house

The team at Founders Heritage Park is undertaking a project to better organise, catalogue, and store the estimated 20,000 objects in their collection.

The reorganisation, dubbed 'ReOrg', will improve the management of the collection of historical items, and ensure the objects donated over the years by the people of Nelson are accessible to future generations for research, education, and display.

Nelson City Council Acting Group Manager Community Services, Tanya Robinson, says the ReOrg project is a great opportunity to create a resource for the public.

"The cataloguing, management systems, and environment provided for Founders' regionally significant collection will all be improved to better meet the recommended standards for museums.

"It's important we have a good record of all the incredible items there and take proper care

of them so they can be used in new displays and available for future generations to enjoy."

Objects held in the collection range from the beloved Bristol Freighter airplane, right down to small shoe nails, and everything in between.

If you are interested in browsing the objects that have already been catalogued, go to [eHive.com](https://ehive.com) and search for 'Founders Heritage Park'.

The Founders ReOrg project is finding objects which shouldn't be part of the collection because they are duplicates, dangerous, in poor condition, or don't meet the criteria in the collection's policy.

These objects will be removed from the collection, which means the Founders team is working hard to find their original owners, which haven't always been recorded.

Did you or your family donate an object to Founders? If so, please check out the list of objects with no recorded owner on the Founders website:

founderspark.co.nz/our-collection/re-org-project



Due to the uncertainty around COVID-19 alert levels please ensure you check itson.co.nz regularly for event updates.

WHAT'S ON... at a Council venue near you



Kirby Lane

Kirby Fridays, every Friday night during summer, 4:30pm – 9:00pm

Wandering Upbeats at Nelson, Friday 1st – 22 April, 12:30 – 1:30pm

Trafalgar Centre

Eelco Boswijk Awards Wednesday 13 April

Nelson Giants vs Otago Nuggets – Thursday 28 April, 7:30pm

Founders Heritage Park

Tuku 22 Whakatū Heritage Months, 1 April – 30 June

(Tuku 22) Print and Bind – Two Day Course, Saturday 9 – Sunday 10 April

(Tuku 22) Ink and Bricks – Wednesday 20 April

(Tuku 22) The Treadle Press Workshop One Day Course – Saturday 23 April

Broadgreen Historic House

Secret Lives Short Story Competition – Monday 14 February – Saturday 30th April

Secret Lives of Dresses Exhibition, Wednesday 9 February – Thursday 30 June, 10:30am – 4:30pm

Isel House and Park

(Tuku 22) The First Flight to Nelson – Saturday 23 April – 11:11.45am, 12:30-1:15pm, 2-2.45pm

Greenmeadows Community Centre

Wellby Signposter Training – Tuesday 12 April, 10am – 11:30am

Nelson Public Libraries:

Elma Turner Library

Hours:

Monday, Tuesday, Thursday, Friday: 9:30am – 6:00pm

Wednesday: 10:00am – 6:00pm

Saturday: 10:00am – 4:00pm

Sunday: 1:00pm – 4:00pm

Small Time at the Elma Turner Library, every Monday & Wednesday, 10:30am – 11:00am

Story Time at the Elma Turner Library, every Tuesday, 10:30am – 11:00am

Shared Reading for Wellbeing, every Tuesday, 11:30am – 1:00pm

Device Advice, every Tuesday & Thursday, 2:00pm – 3:00pm

STEM writers, every second and fourth Tuesday of the month 1:00pm – 3:00pm

Tea & Tales – Dementia Friendly Book Group, every Wednesday, 11:00am – 12:00pm

Library Knitters, every Thursday, 10:00am – 12:00pm

Young Adult Club, every Thursday, 3:45pm – 5:00pm

Tea & Talk, every Friday, 10:00am – 12:00pm

Justices of the Peace, every Saturday 10:00am – 12:00pm

Quiet Hour every Tuesday from March 15, 9:30am – 10:30am

Rising Scientist every Monday from 14 March, 4:00pm – 5:00pm

Shared Reading for Wellbeing, every Tuesday from 15 March, 11:30am – 12:30pm

Junior Reading Club, every Tuesday from 15 March, 3:30pm – 4:30pm

Media Club, every Wednesday from 16 March, 3:30pm – 4:30pm

Op Shop Fashion Challenge – Friday 1 April – Wednesday 25 May, 12:30pm

Library Book Sale – Friday 1 April – Thursday 7 April

Digital Learning – Ebooks and audiobooks – Monday 4 April 2:00pm – 3:30pm

Karen Stade and Diana Clark on Appo Hocton – Tuesday 5 April 11:00am – 12:00pm

Digital Learning – News Then – Thursday 7 April, 9:30am – 11:00am

Author Talk – Christina Sanders – Saturday 9 April 2:00pm – 3:00pm

Philosophy Discussion Group – Monday 11 April 10:am – 11:00am

Digital Learning – Online Safety – Monday 11 April, 10:00am – 12:00am

Grey Power Nelson drop-in – Tuesday 12 April, 10:00am – 12:00pm

Book Chat – Tuesday 12 April, 10:30am – 11:30am

(Tuku 22) Chinese Board Games and Activities – Saturday 16 April, 10:00am – 4:00pm

(Tuku 22) Chinese Board Games and Activities – Sunday 17 April, 1:00pm – 4:00pm

Heart and Pulse Checks from the Heart Foundation – Wednesday 20 April, 10:30am – 12:30pm

Heart and Pulse Checks from the Heart Foundation – Wednesday 20 April, 1:00pm – 3:00pm

Digital Learning – Genealogy – Thursday 21 April, 9:30am – 11:00am

Live Music Series – Duo Jackson – Sunday 24 April, 2:00pm – 2:30pm

Genealogy and Family Trees – Tuesday 26 April, 10:00am – 5:00pm

Digital Learning – Hidden Library Collections – Thursday 28 April, 9:30am – 11:00am

Nightingale Library Memorial

Hours:

Monday, Wednesday, Friday: 1:00pm – 4:30 pm

Tuesday, Thursday: 10:00am – 2:00pm

Saturday: Closed

Sunday: 10:00am – 2:00pm

Stoke Library

Hours:

Monday, Tuesday, Thursday, Friday: 9:30am – 5:30 pm

Wednesday: 10:00am – 5:30pm

Saturday: 10:00am – 1:00pm

Sunday: Closed

Museums and Galleries:

The Suter Art Gallery & Theatre

Hours: 9:30am – 4:30pm Daily

ArtTalks Gallery Tour with Sarah McClintock – Saturday 9 April, 2:00pm – 3:00pm

Refinery ArtSpace

Hours: 10:00am – 5:00pm, Monday to Friday & 10:00am – 2:00pm, Saturday

Changing Threads – Friday 25 March – Saturday 23 April

(Tuku 22) Nelson-Toby or Not To Be – Stories of Death and Dying – Saturday 9 April 7:00pm – 9:30pm

Nelson Provincial Museum

Hours: 10:00 – 5:00pm Weekdays, 10:00am – 4:30pm Weekends & Public Holidays

(Tuku 22) Adult Workshop – Using Collections Online for Research (Session One) – Friday 8th April, 10:00am – 12:00pm

(Tuku 22) Adult Workshop – Using Collections Online for Research (Session Two) – Saturday 30 April, 10:00am – 12:00pm

(Tuku 22) Kids Creative Workshop (one day) – Friday 22 April, 10:14am – 3:00pm