



One month on, where are we?

- City-wide geotechnical investigations are continuing
- Remedial works underway on minor/easy to fix slips and infrastructure
- Most roads are either open, or open with one lane
- Planning and remedial work well underway in parks, walking tracks and community facilities
- Planning underway to remedy complex matters – costed and prioritised as part of the recovery phase
- Remedial planning well underway to reinstate Maitai raw water pipeline from dam
- Large trees and cars removed from Atmore Terrace

Nelson has now well and truly entered the recovery phase. Council, as the local authority, is working within its scope to help to get Whakatū Nelson back on its feet. Our staff are going above and beyond, working long hours to help people get back in their houses as soon as it is safe to do so.

So far, the hard work carried out by recovery teams and the community has seen the number of homes with red placards reduced from 89 to 47.

Please continue to look out for yourselves and your neighbours – the long-term effects on health, including mental health, that come from living through a disaster and its aftermath should not be underestimated.

There are free GP visits for those affected by stress and anxiety caused by the events – just book in with your regular GP to access these as well as free counselling services. Please don't feel whakama, or shy, about getting some help if you need it, this care has been made available for everyone affected by the event.

What is Council doing to support residents affected by the weather event?

Council has provided services such as cleanfill disposal free of charge and has waived building and resource consent charges related to the weather event.

We have distributed more than \$110,000 so far from the Mayoral Relief Fund to those in need of financial assistance following the weather event. We encourage anyone who needs help to get in touch. Even if you don't have all the details required at the time of application, the most important thing is to get your application in and we will come back to you for the missing information.

We continue to share information and updates with residents directly affected by landslips and flooding, and these people have received important information directly to help guide them through the process of having dwellings assessed and placard colours changed (if it is safe to do so).

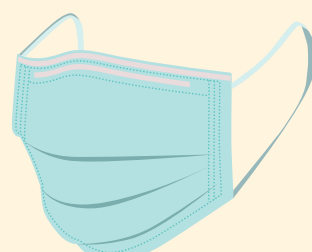
Over the last fortnight we hosted two community meetings for affected residents. These were well attended and gave us the opportunity to direct those residents to face-to-face advice from experts representing insurance, EQC and health, as well as geotechnical experts and Council staff from recovery and building.

The numbers:

- An entire year of rainfall for Nelson, about **1000mm fell** in the Maitai catchment over the weather event
- At its most severe, the Maitai River went from a normal flow of **2m³ per second** to **320m³ per second** – that occurred in just **28 minutes**
- More than **1200 people were evacuated** from their homes
- The region experienced **450 landslips**...and counting
- During the emergency – **89 houses** were marked with a red placard and **89 houses** were marked with a yellow placard

Mask update

Masks are now no longer required unless you are in a health or aged care facility.



This includes Council facilities like libraries, buses, and our customer service centre.

However, COVID-19 is still with us, and many people may choose to continue wearing a mask in public places. Please continue to be kind and respect the decisions of others.

October school holidays at Nelson Public Libraries

Come join in with fun, free events for children, teens and families these October holidays.

Visit nelsonpubliclibraries.co.nz for more details.

Thank you Nelson Tasman students

Mufti days at colleges across Nelson Tasman have raised an impressive \$5000 for the Mayoral Relief fund.

Students from Nelson College for Girls, Nelson College, Waimea College, Garin College, Nayland College and Motueka High School all took part, and representatives from the schools recently met with Nelson Mayor Rachel Reese to present a “cheque” for the donation.

“The response from all parts of community in supporting the Mayoral Relief Fund has been fantastic,” says Mayor Reese.

“What a great way to raise funds. Thanks to all the students who participated.”

Alongside raising money, many students across the region have also been involved with the clean-up efforts.

Nelson College student Matt Donald volunteered as a coordinator for the Student Army Working Bees and said he saw the damage caused by the weather event first-hand.

“When you are on the ground with a spade and your gumboots and you see the amount of mud left behind on people’s land, and in some cases, their homes, you get a sense of the recovery effort that’s going to be needed for Nelson.

“It’s been incredible to see people volunteering their time to lend a hand, but also to see the generosity of people willing to contribute financially to those in need. We hope this donation will help get people back on their feet.”

To date, \$650,000 has been donated to the Mayoral Relief Fund by 899 individuals, businesses and organisations.

Mayor Reese urges those affected to not hesitate to apply.

To donate to the Mayoral Relief Fund, or to apply for aid, visit shape.nelson.govt.nz and click on the “Mayoral Relief Fund” tile. Alternatively, you can make a quick \$3 donation by texting **‘STORM’** to **3493**. Every little bit helps.



Izzy Thurlow (Waimea College), Ali Greer (Nelson College for Girls), Nelson Mayor Rachel Reese, Anushka Castaing (Nayland College), Matt Donald (Nelson College)

Climate Action

Latest emission reduction stats highlight areas to focus on

Stats NZ’s latest data release shows a steady reduction in greenhouse gas emissions per capita in Nelson, with data around increasing transport emissions endorsing the direction of plans such as the Active Transport Nelson Strategy and the Te Taihu Regional Land Transport Plan.

The data on regional greenhouse gas (GHG) emissions for 2020 and 2021 (provisional) is the third set of data to be released in this series, making it possible to identify trends that show how and where we are being effective in reducing Nelson’s GHG emissions.

At an individual household level, the Nelson region was the smallest emitter at 1.2 tonnes of CO₂-e per capita. As a comparison, total household emissions per capita (for all regions) was 1.6 tonnes of CO₂-e per capita in 2021 and the highest emitter region per capita, West Coast, emitted 2.4 tonnes of CO₂.

The data shows the highest source of industry emissions in Nelson is the primary industries sector, which comprises of agriculture, forestry and fishing emissions. Nelson’s household GHG emissions from transport for 2021 increased by 15% compared with 2020. Private transport is the highest source of Nelson’s emissions in the household sector, making up 90% of total household emissions. This figure has been consistent across the last six years of emission data.

While the trend is heading in the right direction, Council acknowledges the need to make more rapid reductions to all of our greenhouse gas emissions, in particular transport emissions. Key documents such as the Active Transport Nelson Strategy and the Te Taihu Regional Land Transport Plan contain ambitious targets to reduce kilometres travelled by vehicles and to increase public transport, walking and cycling.

Stats NZ has revised its methodology for collecting and reporting to improve the data collected. For example, the method used to allocate household road transport emissions to specific regions has been improved to account for fuel types and marine recreation. Despite the revisions, the data still shows a steady reduction trend for emissions per capita in the Nelson region.

Council has a number of climate change projects underway. You can read about them here: nelson.govt.nz/climate-action-plan

For more information see: stats.govt.nz/information-releases/greenhouse-gas-emissions-by-region-industry-and-household-year-ended-2021

Nelson’s award-winning active travel project to be extended with \$1.4m funding

Walking and cycling in Nelson South received a huge boost after Nelson City Council was awarded \$1.4m by Waka Kotahi to extend its award-winning active travel project in Nelson South.

Part of the Waka Kotahi Streets for People programme, this next stage of the project will extend the trial road layout changes between the Railway Reserve and Kawai Street South all the way to Waimea Road at Hampden Street, providing a safe active travel corridor for pedestrians, cyclists, school kids, hospital visitors and commuters right through the heart of Nelson South.

The project aims to make active travel safer and more convenient by reallocating road space so that it prioritises walkers and cyclists on streets that serve many key destinations and major employers, such as Nelson Hospital, schools, and journeys towards the city centre.

Chair of the Regional Transport Committee Brian McGurk says the success of the project at Kawai Street South hinged on the buy-in from local road users.

“Change is hard, and there are inevitable concerns when you make changes like these. But on Kawai Street South, we had great support from residents, the intermediate school and local kindergarten who were thrilled to see reductions in speed on their streets, making them safer for children and more appealing to walk or cycle down.

“Now we want to extend that success, so we start to link up some of the most travelled areas of our city.”

Te Whatu Ora - Nelson Marlborough Health’s General Manager Finance Performance & Facilities Eric Sinclair leant his support to the project.

“Improved walking and biking paths between the Railway Reserve and Waimea Road will make for a safer commute for those who walk or bike to work and encourage more people to take up active travel. We look forward to working closely with Nelson City Council on improving walking and cycling links around Nelson Hospital.”

When complete, the Railway Reserve to Waimea Road active travel link will directly contribute to E Tū Whakatū’s (our Active Travel Strategy) goals for a reduction in vehicle kilometres travelled, transport emissions, and a safer network for people using active modes of travel.

Due for final adoption at a full Council meeting in September, E Tū Whakatū has a target of doubling the number of trips made by walking and cycling to work and school in urban areas by 2030 and tripling them by 2050.

Saxton Road wastewater upgrade

A major wastewater upgrade project on Saxton Road will get underway in October, with traffic being detoured onto Main Road Stoke.

Why are we upgrading services?

This project is part of a multi-stage project to improve the Nelson Regional Sewerage Scheme’s overall resilience. A secondary rising main is being installed around the Waimea inlet from the Beach Rd pumpstation in Richmond to Monaco.

The first work we are undertaking is focused on Saxton Road between Whakatu Drive and Main Road Stoke.

How long will this take?

The project will start 3 October 2022 and is scheduled for completion March 2023. The project is split into three stages and there will be different traffic management in place for each stage.

Stage 1 will last until early November and will see the entry to Nayland and Saxton Roads from Whakatu Drive closed. Traffic detours will go via Main Road Stoke. Have a look at the map to see how this will work.

The work will pause mid-December to mid-January for the Summer break. During this time the roads will be reopened.

We do expect there to be some disruption to traffic while this work takes place and are asking the wider community to consider alternative routes or modes of transport if possible.



Milestone reached at Awatea Pump Station

A new pump station with the capacity to receive wastewater from the whole of the Tāhunanui area is now a step closer to completion as contractors have completed the deep trenching work at Awatea Place.

Group Manager Infrastructure Alec Louverdis acknowledged that the wet winter and recent periods of heavy rain had made the project particularly challenging.

“We’ve had less than ideal weather for this work, but our contractor has managed to skillfully negotiate these tricky conditions and extra stormwater work so we’re ready to move to the next stage now.”

Awatea Place will now reopen but will remain in an unsealed state until work in the area is fully completed. A new kerb and channel, footpath and final sealing of the road will happen at the end of the project.

Work will now move onto Parkers Road, and contractors are assessing whether it will be possible to lay the pipe there without using sheet piling.

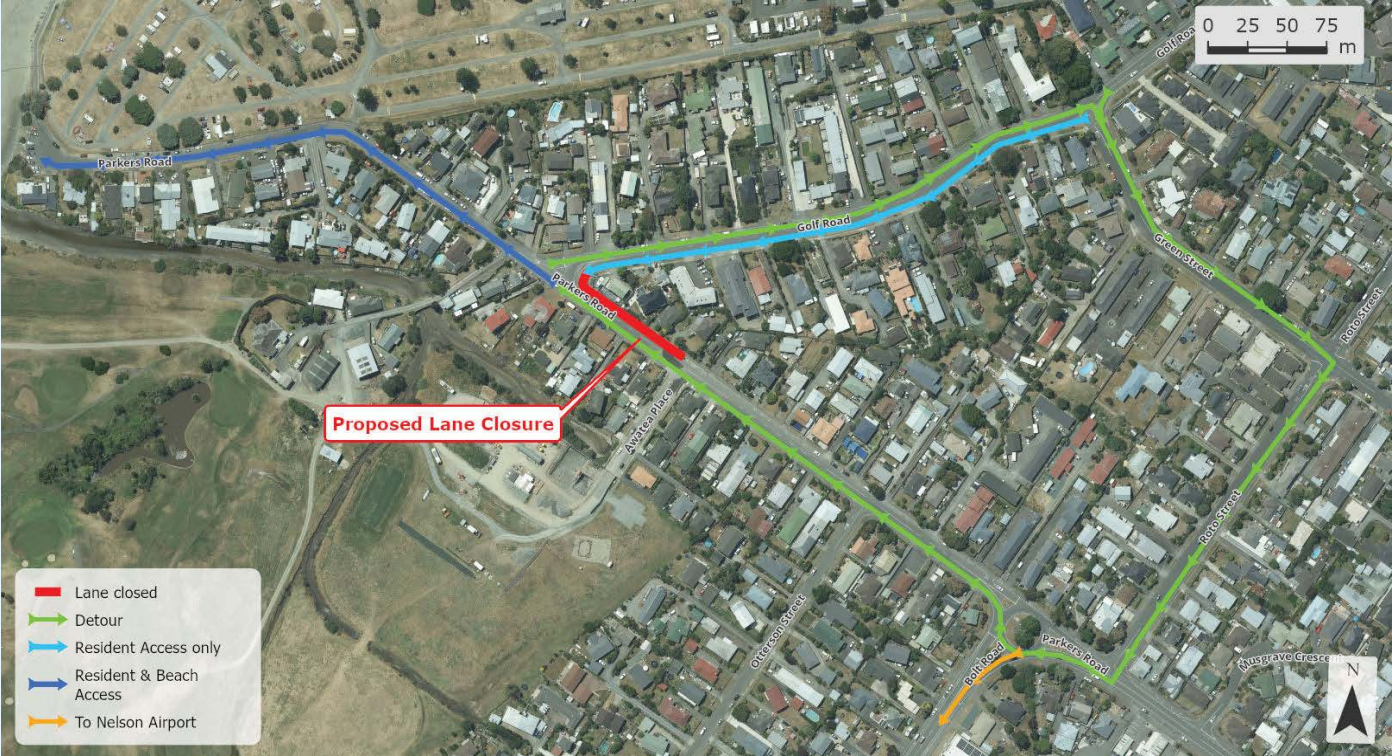
“For this section, the excavation is not as deep as the recent Awatea Place pipe work,” says Louverdis.

“We will initially trial excavation methods that avoid sheet piling. If successful, much of the line will be installed with trench shields which will minimize vibration. However, sheet piling may be unavoidable depending on the ground conditions we find.”

Traffic management will be in place on Parkers Road from 19 September, with the eastbound lane closing (see map). A detour route via Green and Roto Street will be in place for eastbound traffic during the closure.

With a construction budget of \$11.2m, the Awatea Pump Station project is part of Nelson City Council’s commitment to building and maintaining core infrastructure in our City.

Infrastructure projects were allocated \$496m of funding in the 2021-31 Long Term Plan.



Voting is now open for the 2022 Nelson City Council election

New for the election this year is the use of Single Transferable Vote (STV) and a mixed-ward system.

Check out the short preview below to see how STV works, or scan the QR code with your phone's camera app to see the videos.



Part one:
How the results are decided



Part two:
How to fill in your ballot paper

Where can I submit my vote?

Find your nearest **NZ Post postbox** to send your vote to Nelson City Council, 110 Trafalgar Street (last date for postal voting is Monday 3 October), or drop it off at one of the orange NCC ballot bin locations listed below.



Vote here



Nelson City Council ballot bin locations

Customer Service Centre:
Civic House, 110 Trafalgar St

Stoke Library:
35 Putaitai Street

Tāhunanui Community Centre, Reception: 55/61 Muritai Street

Elma Turner Pop-up:
27 Halifax Street

Windmill at Founders Heritage Park:
87 Atawhai Drive, The Wood

Enner Glynn School, Reception:
10 The Ridgeway, Enner Glynn

Nightingale Memorial Library:
2 Beach Road, Tāhunanui

Habitat for Humanity Hub, Reception: 166 Tāhunanui Drive

Victory Community Centre:
2 Totara Street, Nelson South

For the 2022 local election, Nelsonians will vote using a Single Transferable Vote system, or STV for short. Under STV, candidates must receive a certain number of votes. This is called the Quota.

Single Transferable Vote



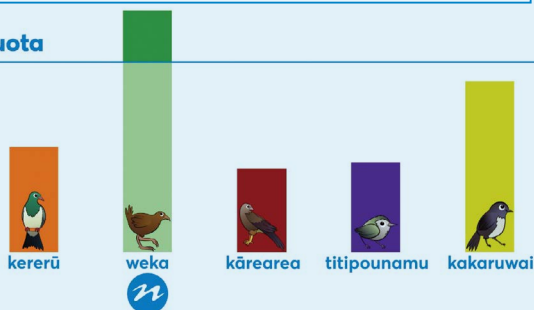
The Quota is determined by the number of positions to be filled and the number of votes that are cast. When the votes are counted, any candidate that reaches the Quota on first choice votes is elected.

Weka is elected! But what about the other birds? No one else reached the quota?



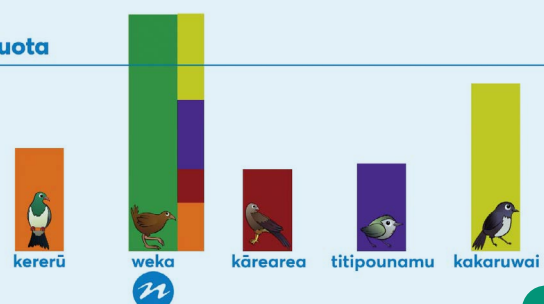
Because Weka has more votes than she needs and is now elected, these extra votes go to the second favourite candidates listed.

Quota



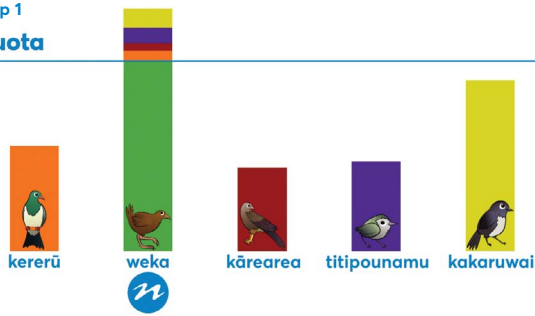
To do this, we look at all the second favourite choices on the votes Weka received.

Quota

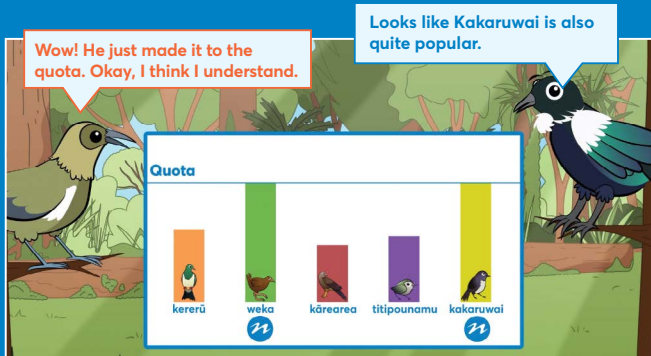
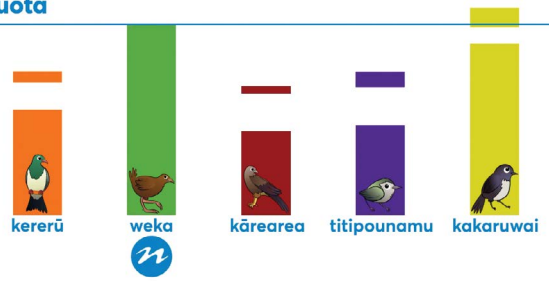


Then redistribute that percentage of the extra votes to the other candidates.

Step 1 Quota



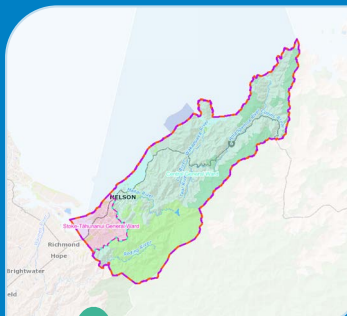
Step 2 Quota



For a full explanation of STV and the new ward system, visit the Nelson City Council Election Hub by going to nelson.govt.nz and clicking on the local election tile.

At the Election Hub, you can also:

Check which ward you're in using our searchable map.



View profile statements of candidates standing for election.



See upcoming 'meet the candidates' events.



Nelson's opportunity to be New Zealand's most climate resilient city

By Mayor of Nelson, Rachel Reese

Even as the Spring weather gradually calms, the August rainstorm that impacted our city remains fresh as we move through our recovery.

Something last month's serious weather event has shown is that the best of us shines through when we work together as a community to help others. I am immensely proud of everyone around the city who came together to help their friends and strangers in need. I am also extremely proud of my Council team, who showed strength and empathy in the days and nights of the storm and afterwards as they help those still needing support.

We are now focused on fixing what is urgent and relatively minor, and helping people get back into their homes when it is safe to do so. With the help of insurance and EQC, as well as central government funding, we will start to repair our damaged drinking, waste and storm water systems. With the assistance of Waka Kotahi our roads will be repaired. Many of our walkways in parks and reserves also need significant work.

The storm showed that the city's infrastructure is only partly resilient to the changing climate, and here lies the opportunity for the next Council - we are not yet the country's most climate resilient city, but we could be if we focus on the longer-term solutions for our city.

I sincerely hope that the new Council elected in October, will look to its responsibilities for our future generations and bring this lens to our post-flood repair and climate adaptation work. If we only put energy into simply fixing what we have to, we will miss the opportunity to be smart and to collaborate for a safer, more prosperous future for our city, one that is ready to embrace higher tides and more intense rainfall.

Our region has a rich history of success bedded in our connection with the sea. I believe we should take the lead in turning to the sea again for solutions, positioning ourselves nationally and internationally as a leader in ocean-based climate responses.

In 2018, I had an inspiring trip to Denmark to learn more about how we could collaborate on climate change action. In 2020, the Council signed an MoU between Wakatū Incorporation, and four Danish organisations. Wakatū Incorporation is planning a Nelson Climatorium, based on Denmark's international climate centre, Lemvig's Klimatorium, a place to bring together government, industry, academics and the public in an integrated climate change "think-tank".

We should support having this climate change conversation sooner rather than later. Let's collaborate on the urban design and engineering solutions needed for a future of sea level rise, because investing in our strategic urban infrastructure needs to keep moving forward. The likes of the Climatorium, the Science and Technology Precinct, and the multi-purpose development with a library at its heart, shouldn't be taken off the drawing board due to climate fear. Rather, these are the developments that have true community purpose for a future-focused Council to actively work on and support.

Of course, how and where we invest needs careful consideration. For example, as part of our due diligence of the riverside site proposed for the multi-purpose library development, indepth geotechnical reports have been commissioned. As responsible stewards of our city, we wanted to make sure we were armed with all we needed to know about the riverside, to inform what we do on and around it – what we build, how we connect with the river, and how we enhance our transport links that might be impacted by the river. New information, such as updated data on sea level rise, will also continue to be evaluated and inform Council decisions about the city centre.

Councils have an ongoing responsibility to provide quality city and social infrastructure – public spaces that people care about, that reflect their identity, that connect people together and enable better outcomes for everyone. We need to be smart about the infrastructure we build for our people.

Christchurch has been smart about its investment in Tūranga - one of the more significant projects to reconnect their city following the 2011 earthquake. This library development has given Christchurch immense benefits. It draws the community back to what is now a more vibrant central city, to be together. Residents and visitors are learning, teaching, accessing services, and being entertained. Social outcomes include less social isolation, more innovation, more fun, and greater learning. And economically, Tūranga has encouraged significant private investment in the city.

Like so many cities and towns, Christchurch City Council put a stake in the ground with their investment in a modern, multi-purpose library, and other key central city developments. This show of commitment has given its centre a purpose.

I hope our Council can do the same for our people and our city centre.



Mayor Rachel Reese

VARIEGATED THISTLE

(*Silybum marianum*)



**PEST
PATROL**
On the lookout

Variegated thistle is a conspicuous, spiny thistle most often found in pasture and wasteland. The stems can grow up to 2.5 metres high, and the plant itself can form dense clumps in excess of 1 metre in width. The leaves have white veins and blotches that give the leaves a variegated look.

Large, single purple flowers are visible in November through to January, producing a large number of dark, heavy seeds. The seed is spread by machinery, animals and birds. The seeds can remain viable for up to 10 years, making eradication a long-term task requiring both patience and persistence.

It is primarily a pest in pasture areas as:

- thistle growth suppresses the growth of pasture grasses
- high nitrate levels in pest plants growing on nitrogen-rich soils can be toxic to livestock, especially cattle
- spines on the leaves and stems can cause injury to people and animals
- dense clumps impede stock movement.

Nelson and Tasman only have a few small pockets of variegated thistle due to the efforts of rural landowners over the last 30 years. Landowners with variegated thistle on their land are reminded that there is a requirement to destroy all adult and juvenile plants before flowering each season.

Variegated thistle is very distinctive due to its large size and striking white patterning. The only similar species that could be easily confused is Winged thistle (*Carduus tenuiflorus*). It is much smaller and has cream-coloured patterning on the leaves and is common in Nelson.

If you see this plant or require further advice or information on variegated thistle and other biosecurity threats, please contact Council's biosecurity officer on biosecurity@ncc.govt.nz or call 03 546 0200.



Nelson Clay Week

1-9 October 2022

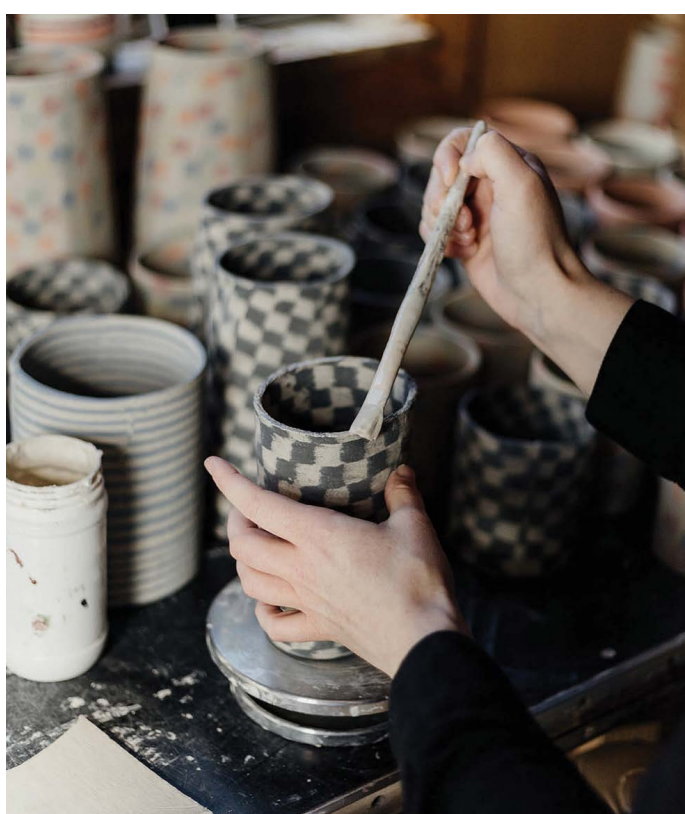
The inaugural Nelson Clay Week gets underway next month, attracting some of the country's leading makers for a series of exhibitions, workshops, masterclasses, open studios, public demonstrations and a market day.

The week begins with two days of Open Studios, with more than 15 potters across Nelson, Tasman and Marlborough welcoming the public to their workshops. The week will finish with a Potters Market in Queens Gardens, showcasing more than 30 potters selling their wares.

At the top of Trafalgar Street, come along to Potters Square for five days of free demonstrations, kiln firings and a chance to try your hand at some claywork. Perfectly timed to coincide with the school holidays, kids will be able to contribute to a public sculpture of hundreds of clay fish. For those who want a more hands-on experience and to learn some new skills, there are more than 25 workshops spread across the week.

At Refinery ArtSpace, the exhibition Pushing Clay Uphill will showcase the best contemporary ceramics from around the country. There will also be a series of exhibitions and window displays across the city.

Check out the website for more information, maps, times and bookings: clayweek.nz



Marina Masterplan adopted

A masterplan that will transform Nelson Marina into a modern, world class facility for boaties and the community to enjoy is due to be adopted at a Council meeting held on Thursday 22 September.

The masterplan contains a raft of new initiatives for the Marina over a 10-15 year time period, including:

- A new waterfront promenade for walking and cycling
- A revitalised pocket park
- New premises for a café and other food and beverage outlets
- A potential location for a new sea sports facility
- A dedicated fuel pier
- Reconfiguration of the public boat ramp area to reduce congestion
- A future-proofed marina hardstand and new boat hoist
- Reconfiguration of marina berths
- Plans for a future marina extension
- Long-term plans for a dry stack

A month of community engagement resulted in more than 200 submissions, with 89% of people in general agreement.

Strategic Development and Property Subcommittee Chair Gaile Noonan says detailed submissions from a wide range of individuals and groups were incredibly useful.

"There's a tendency for people to wonder if submissions can make a difference but I think the final plan here is a great example of Council listening to the feedback it has received and making smart adaptations to its planning.

"The masterplan has strong community support, and when it is implemented, I am really looking forward to seeing our Marina expand into a genuine community asset."

There were numerous suggestions from all groups as to how individual projects should be implemented. Many of these ideas have been included in the strategy, for instance the idea to include a playground in the pocket park. Others will be considered when individual projects within the plan get underway.

Another change was made to ensure strong partnership with Te Tau Ihu Iwi so that any improvements to the Marina uphold the mana of tangata whenua.

"It's vitally important to have iwi onboard with our plans and we want the designs, layout and the allocation of space to be seen as an opportunity to recognise and acknowledge that this is an area of significance to iwi," says Marina Manager Nigel Skeggs.

"We've altered the plan to ensure that Te Tau Ihu iwi are to be partnered with and that the environmental health of the Haven is preserved."

The consultation revealed strong public support for the new Sea Sports facility, but there were some concerns about whether the site itself would provide a safe place for launching boats.

"We've clarified that further studies will be carried out to make sure the proposed facility is fit for purpose and safe for the launching and retrieval of all watercraft and participants in most weather conditions," says Nigel.

Once the masterplan is adopted, the Marina team intend to start work on initial projects this year.

At the same Council meeting, elected members will be considering the constitution and incorporation of a Management Council Controlled Organisation (CCO). The new Management CCO will be tasked with overseeing the governance and operations of Nelson Marina as it sets out on its new journey of investment and development, as per the approved Masterplan. Work will now commence to recruit board members with relevant experience.

To read the full plan visit:



HER MAJESTY QUEEN ELIZABETH II

MAY SHE REST IN PEACE, AND RISE IN GLORY

The Service of Commemoration and Thanksgiving for the Life of The Queen will be held at 3pm on Saturday 1 October at Nelson Cathedral.

A Book of Condolences is available for all to sign in Nelson Cathedral.



China Week: 26 Sep – 2 Oct



Nelson's China Week celebrates and recognises our close relationship and historical links with China. See chinaweek.co.nz for events and details.

Remembering Christine Ward

The former branch president of the New Zealand China Friendship Society (NZCFS), and long-time contributor to the Sister-City Coordinator group, Christine Ward, died last year. She was 80 years old.



Christine served on the NZCFS National Executive and as the Nelson Branch President from 2010-2015. At the time of her passing, she was secretary of the Nelson branch and Vice President for the South Island.

Christine played a major role in a number of Nelson branch NZCFS projects, including community activities, sister city relationships and exchanges, and youth initiatives.

Christine created projects connecting Huangshi and Nelson school children, she worked closely with the Confucius Institute to offer Nelson primary school children Mandarin classes, and she was heavily involved in Nelson's inaugural China Week in 2015.

Christine was a researcher and wrote several teaching books, including "Learning to Learn" and "Teaching to Learn". She researched extensively on the influence of Mr Rewi Alley in New Zealand-China relations. Her work to assist in reprinting the story of New Zealand's first Chinese immigrant, Appo Hocton, resulted in a book used in schools nationwide.

She was highly respected in China for her education work and brought education delegations to New Zealand.

Christine is remembered for her intelligence, wisdom, and generosity. She was a treasure for Nelson Whakatū who will be missed.



MEETINGS

Council meeting

9am

22 Sep

Council Meeting

9am

27 Sep

Hearings Panel - Other

1pm

28 Sep

Council meeting - reconvened from 22 September 2022 (if required)

9am

29 Sep

Change to meeting

The Council meeting, previously advertised to take place on 27 September 2022, commencing at 11.15am, will now commence at 9am.

The Regional Transport Committee, previously advertised to take place on 27 September 2022, commencing at 1.30pm, will now commence at 3.30pm.

Meetings for the new triennium (2022-2025) will be advertised once confirmed after the Local Elections 2022.

For a full list of meetings go to:

[**nelson.govt.nz/meetings**](https://nelson.govt.nz/meetings)



To sign up for Our Nelson by email go to:

[**nelson.govt.nz/our-nelson**](https://nelson.govt.nz/our-nelson)

Saxton Field

2022 Tasman Primary Schools Regional Hockey Festival Y3&4 – Tuesday 27th September

Inter-Regional Primary & Intermediate Schools Cross-Country Championships 2022 – Thursday 29th September

Saxton Stadium

Business House Competition Table Tennis - Wednesday 10th August - Wednesday 28th September

Table Tennis Nelson - Junior Coaching – Monday 8th August 2022 - Tuesday 8th August 2023

Trafalgar Centre

The Boss Tribute Show - Saturday 24th September, 7:30pm

Trafalgar Park

Tasman Mako v Northland – Saturday 24th September, 2:00pm

Founders Heritage Park

Wellby @ Founders Quizz Night – Friday 23rd September, 6:30pm

Latin Music Dance Party - Saturday 24th September, 6:00pm – 10:00pm

Live Music Series Bryce Wastney – Sunday 25th September, 2:00pm – 2:30pm

Clay Week Workshop: Beginners Handbuilding with Fiona Sutherland - Sunday 2nd - Sunday 9th October, 10:00am – 1:00pm

Trafalgar Street Hall

Author Talk, Mary Garden – Saturday 24th September, 2:00 – 3:00pm

STEM Writers - Tuesday 27th September & 11th, 25th October, 1:00pm – 3:00pm

Broadgreen Historic House

School Holiday Harakeke Weaving Workshop – Sunday 2nd October, 9:30am – 3:30pm

Design and Weave your own Mobius - Neck Cowl – Sunday 9th October, 10:00am – 4:00pm

Nelson Public Libraries:

Elma Turner Library – Open as the Pop-up Library

Small Time – every Wednesday at the Pop-up Library, 10:30am – 11:00am

Library Knitters - Nelson Women's Centre every Thursday from 10:00am – 12:00pm

Tea & Talk – every Friday, Age Concern Office, 18 Bridge Street, 10:00 – 12:00

Bookchat – Tuesday 13th September, Age Concern Office, 10:30 – 11:30am

Shared Reading for Wellbeing – Nikau House, every Tuesday, 11:30am – 12:45pm

Justices of the Peace - every Saturday 10:00am – 12:00pm

Device Advice – every Tuesdays & Thursdays at the Pop-up Library, 2:00pm – 3:00pm

Story Time & Craft Chaos – Wednesday 5th October, 10:30am – 11:30am

Take & Make Kits – 10th – 14th October, During Open Hours

Puppet Show – Tuesday, 11th October at the Pop-up Library, 1:00pm – 1:30pm

Seed Swap for Spring – Wednesday 12th October at the Pop-up Library, 10:00am – 12:00pm

DIY Wellness LAB - Wednesday 12th October at the Pop-up Library, 10:00am – 12:00pm

DIY Wellness LAB for Teens - Wednesday 12th October at the Pop-up Library, 12:00pm – 1:00pm

DIY Tote Bags for Teens – Thursday 13th October at the Pop-up Library, 1:00pm – 3:00pm

Nightingale Library Memorial

Hours: 10:00am – 4:00pm, Monday to Friday

Saturday: Closed

Sunday: 10:00am – 2:00pm

Tea & Tales – Dementia Friendly Book Group, every Wednesday, 11:00am – 12:00am

Nellie Knitters – Every Monday, 1:00pm – 4:00pm

Small Times – every Tuesday, 10:30am – 11:00am

Story Time – every Tuesday, 1:30pm – 2:00pm

Techy Time at Tahuna – Tuesday 30th August & 6th August, 3:45pm – 4:45pm

Wellby Talking Café – Thursday 13th October, 10:00am – 11:30am

Library Scavenger Hunt – 1st – 16th October, During Open Hours

Take & Make Kits – 10th – 14th October, During Open Hours

'Rosie Revere, Engineer' Storytime & Activity – Friday 14th October, 10:00am – 11:30am

Stoke Library

Hours: Monday, Tuesday, Thursday, Friday: 9:30am – 5:30 pm

Wednesday: 10:00am – 5:30pm

Saturday: 10:00am – 1:00pm

Sunday: 1:00pm – 4:00pm

Stoke Device Advice – every Tuesday & Wednesday, 2:00pm – 3:00pm

Reading to Billy the Dog – every Wednesday, 3:30pm – 4:30pm

Small Time at Stoke Library – every Friday, 10:30am – 11:00am

Techy Time – every Friday, 3:45pm – 4:45pm

Techy Time – Monday 3rd October, 2:00pm – 4:00pm

Stoke Book Chat – Wednesday, 21st September, 5:30pm – 6:30pm

Library Scavenger Hunt – 1st – 16th October, During open hours

Take & Make Kits – 10th – 14th October, During Open Hours

Museums and Galleries:

The Suter Art Gallery & Theatre

Hours: 9:30am – 4:30pm Daily

NSAS Spring Edition – Wednesday 12th – 30th October

Exhibition: Abstraction in New Zealand – 7th May – 9th October

Exhibition: Stevei Houkāmau: Ira Tangata Ira Atua – 18th June – 2nd October

Exhibition: Selina Foote: On a Clear Night- 20th August – 13th November

ArtTalks: Curator Floor Talk: Ed Hanfling – Saturday 24th September, 2:00pm – 3:00pm

ArtTalks: Stevei Houkāmau: Saturday 1st October, 2:00pm – 3:00pm

Workshop: Marbled Ceramic Jewellery with Iza Lozano | Part 1 – Monday 3rd October, 10:00am – 5:00pm

Art Classes: - Kids Being Creative – 6-9 years – every Tuesday & Wednesday, 3.20pm – 4.20pm

Art Classes: - Kids Being Creative – 10-13 years – every Monday, 3.30pm – 4.45pm

Art Classes: - Art for Secondary School Age – every Thursdays, 3:45pm – 5:00pm

Art Classes: - Art for Adults – Thursdays & Fridays, 10.00am – 11.30am

Refinery ArtSpace

Hours: 10:00am – 5:00pm, Monday to Friday & 10:00am – 2:00pm, Saturday

Indeterminate Infrastructures – 23rd – 25th September, During Open Hours

Nelson Provincial Museum

Hours: 10:00 – 5:00pm Weekdays, 10:00am – 4:30pm Weekends & Public Holidays

MELTDOWN: Visualising Climate Change – Friday 3rd June – Sunday 2nd October, 10:00am – 4:30pm