



Repair, Reconnect, Recover

Three months on from the devastating August severe weather, the main break in the Maitai Raw Water Pipeline from the Maitai Dam has been fully repaired, and this key lifeline asset is once again reconnected to our water supply.

The repair is the result of 11 weeks of hard work by Nelson City Council staff and a dedicated team of contractors and consultants.

"A job of this size would normally take more than half a year to complete," says Group Manager Infrastructure Alec Louverdis.

"But the team involved had a really strong grasp of the urgency of the project. They were required to quickly analyse plans, schedule contractors, ensure the availability of equipment and supplies in a way that didn't sacrifice quality or health and safety protocols.

"Managing that in the timeframe they had available was like solving a difficult jigsaw puzzle against the clock."

The first piece of the puzzle was restoring access to the site and repairing the Maitai Valley Road, which was severely damaged from floods and slips in several locations.

"This alone was a major engineering feat, but the team then had to develop a plan for repairing a missing 12 metre section of the pipeline—167 metres up from the road, across the river, up on a very steep hillside with no easy way to transport supplies to the site."

The repair team developed an innovative solution using a forestry hauling machine from Moir Logging. This piece of equipment, typically used to raise logs up a hill with a cable, was modified to lift a bridge, pipes and equipment up to the worksite.

Louverdis says everyone involved in the repair deserves the highest praise for the effort and ingenuity put into the work.

"The teams developed solutions to problems as they arose and communicated as much as possible face-to-face or on the phone. This shows the resilience and expertise of all involved. We were all very conscious of the need to restore this critical asset for our community as soon as possible."

While the Maitai Raw Water Pipeline was out of action, water supply in Nelson was maintained through the Duplicate Raw Water Pipeline, which held up well despite extra demand, and through the Roding Pipeline.

Staff are now turning their attention to building a pedestrian bridge alongside the pipeline to restore full pedestrian and cyclist access to the Coppermine Trail.

Thank you to all Council staff, consultants, and contractors who worked on this project:

- [Fulton Hogan](#)
- [Tonkin + Taylor](#)
- [Staig & Smith Ltd.](#)
- [Ground Anchor Systems](#)
- [Moir Logging](#)
- [Thelin Construction](#)
- [Helliwell Contracting Ltd.](#)
- [Lift N Shift Ltd.](#)



Taskforce appointed to spearhead storm recovery

The sheer scale and cost of the recovery effort needed to get Nelson Whakatū back to where it was before August’s severe weather event is front of mind for the city’s new Council.

With recovery estimated to take up to five years to complete, Council approved the establishment of a Storm Recovery Taskforce led by members Mayor Nick Smith (Lead) and councillors Trudie Brand and Matty Anderson, at the first meeting of the new triennium on 10 November.

Mayor Nick says that Nelson’s recovery is a top priority for this Council and it’s important for the community to understand the full impact and how this will affect the city going forward.

“It’s vital that we maintain momentum to get affected residents and businesses back on their feet as soon as possible, at the same time as prioritising crucial infrastructure rebuilds and repairs,” says Mayor Nick.

“By July 2023 we will have spent \$10M and on top of that there is a further high-level cost anticipation of \$40-60M.

“We’re in for a long, hard road, but I’m confident that having a taskforce in place to oversee the recovery will help to identify areas where there is a lack of progress and help steer things in a direction that consistently identifies the best choices and value for our city and ratepayers.”

The taskforce has no delegated authority to spend money; that responsibility remains with Council. As Council officers continue with the recovery effort, they will report to the taskforce with updates on the progress and challenges of the recovery, and also report to full Council on a quarterly basis seeking retrospective approval of expenses.

Spending paused on Matai Precinct Library Project while Council considers alternatives

Nelson City Council has decided not to spend any further money on the new library located in the Maitai Precinct, giving councillors the chance to consider alternatives through the Annual Plan process.

Nelson Mayor Nick Smith put to the first meeting of Nelson City Council on Thursday 10 November, that it was appropriate to reconsider the project given the economic situation facing Nelson.

“Households and businesses are facing enormous financial pressure from the highest inflation rate in 30 years and the sharp increase in interest rates, which makes the library project unaffordable in the current climate,” he said.

“I do not want further ratepayer money being spent on detailed design, and further engineering studies when there isn’t the financial room to finance the project.

“Council’s finances have become even more challenging since the devastating August weather event. The cost of the repair work to Council’s own infrastructure is likely to fall between \$40-\$60m on top of the \$6m spent during the emergency phase.”

Debate largely focussed on what the next steps for the Library project would be. Councillors supported the adaptation of a resolution calling for consideration of the removal of the new library project to also include consideration of an alternative library proposal.

Mayor Nick said Council will need to review its capital programme of works over the next decade through the Annual Plan process next year.

“This will include the options of maintaining the current facility or a more modest new development. It’s important that the public have an opportunity to have input in this longer-term plan.”

Deputy Mayor Rohan O’Neill Stevens said he had received feedback from the Nelson community that the Elma Turner Library needed to expand to meet demand.

“I’ve had numerous emails from people, even before the Elma Turner Library partial closure, that there are issues with conflicting uses. One person’s quiet oasis, is another’s place for a community meeting.

“I think this is an opportunity for us to go back to the Nelson community and get a better grassroots understanding of what they need from a new library or community hub.”

A second item on the agenda looked at how Council will push ahead with the full reopening of the Elma Turner Library following its closure due to earthquake risk.

Mayor Nick said the urgent priority was in getting the current library re-opened at reasonable cost and as quickly as possible.

“My first priority is to address the immediate issue of tile safety as quickly as possible so the Elma Turner Library can return to full service.

“To that end Council will establish a Library Reopening Taskforce to urgently progress the work to enable this to occur.”

The taskforce will comprise Mayor Nick and councillors Kahu Paki Paki, Tim Skinner, and Aaron Stallard. This group will be able to make rapid decisions about next steps once Council has received the final version of the Structural Detailed Seismic Assessment for the library.



New Trafalgar Park murals unveiled

A brand-new series of murals created by local rangatahi (young adults) were unveiled on Friday at the entrance of Trafalgar Park. The artwork is centered around stories of the eight iwi of Te Taihupo (the Top of the South Island) and the theme of tūmanako, or hope. The project was led by the artist Graham “Mr G” Hoete and commissioned by Te Puni Kōkiri (Ministry of Māori development), with support from Council, Ngā Iwi o Te Taihupo, Whakatū Marae, Nelson Community Venues and Tasman Rugby Union.

Te Pā Harakeke

Nelson's brand new park is opening to the public!

PICNIC AREAS



COFFEE CART



FACE PAINTING



NATURAL PLAY EQUIPMENT



Saturday 26 November, 1pm

Tāhunanui Reserve



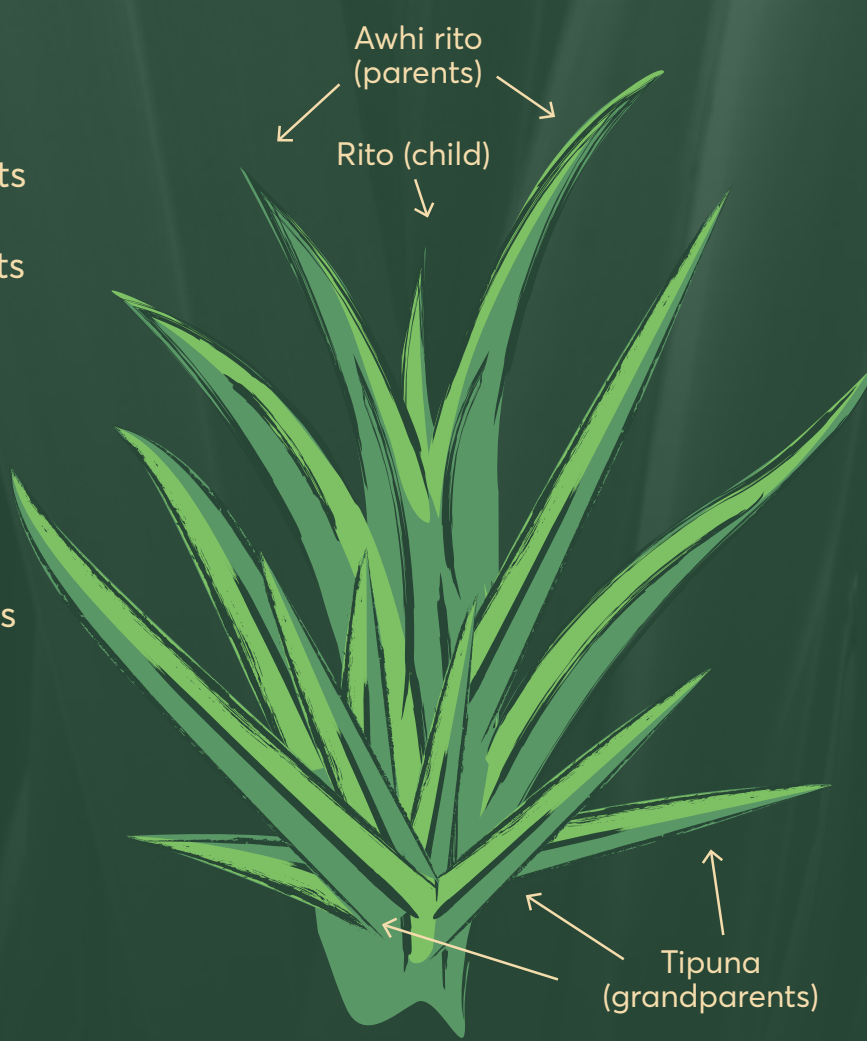
Nelson
City Council

Te Kaunihera o
Whakatū

What does our park's name mean?

'Te rito o te harakeke' is the centre shoot of flax, likened to a child. The two shoots immediately either side of the **rito** are its **'parents' (awhi rito)**. The outer shoots are the **'tipuna' (grandparents)**.

Te pā harakeke is a multi-generational place where families and people of all ages can relax and spend time together, where our tamariki can grow surrounded and protected by older, more experienced generations.



Better pay for bus drivers

New Zealand has a nationwide shortage of bus drivers and, as a result, Nelson's bus service has recently come under a bit of pressure.

So far, we have largely managed to maintain our full bus service, thanks to the efforts of local operator SBL Nelson Coachlines and their dedicated team of drivers. Last week, however, we were not able to run the overload bus on Route 1 at 3:30pm (Nelson to Richmond) and 8am (Richmond to Nelson).

Group Manager Infrastructure Alec Louverdis says Nelson City Council are working with SBL Nelson Coachlines, Tasman District Council and Waka Kotahi to attract more staff.

"Our local team of drivers have had a testing couple of years as they were at the forefront of some of the measures we had to put in place due to COVID-19. We absolutely recognise how important they are to our community and made sure they all had a pay rise to the Living Wage (\$22.63/hr) during 2022.

"But given the need to attract more people into the job, and the efforts drivers have put in to maintain our services, we have moved quickly in conjunction with operators and Tasman District Council to raise the wage to \$28 an hour."

The wage increase became effective as of 25 October, but it would still take time to find new drivers.

"With a new extended fleet of electric buses coming online mid-2023, SBL are now looking to fill those gaps, so there's a real opportunity for people who think they are suited to the work."

While new drivers are hired, we recommend downloading the Antenno app as we will send out alerts on Antenno if any cancellations occur.

If you have the app installed, you will receive these alerts directly to your phone. You can find out more about Antenno here buff.ly/3U1QTOC, or search 'Antenno' in the App Store.

Cancellations will also be publicised on Facebook and our website at nelson.govt.nz/services/transport/nbus/routes-and-timetables.



A safe (and people-friendly) pathway to permanence

Over the past few years, Nelson City Council has been working with the Nelson South community on an Innovating Streets project to make residential streets safer and more liveable.

Such was the success of this project, Waka Kotahi has awarded Nelson City Council \$1.4 million to continue developing the active transport corridor linking the Railway Reserve to Waimea Road, via Nelson Hospital. Now's a great time to look back at Innovating Streets to see whether the safety gains in Nelson South have been maintained.

The Innovating Streets programme aimed to quickly change road layouts to build active transport networks. Projects like ours in Nelson South used quick, lower-cost and temporary treatments to create positive people-centred changes to streets and lower speeds.

Initial data gathered in 2020 and then again in 2021 showed us that speeds on the roads that were involved in the project slowed and the amount of traffic using the streets as a through-route dropped by around 30%.

We saw changes to how people used the streets, with the picnic tables being used regularly, and an increase in the number of people using the pathways to the Railway Reserve.

The most recent 2022 data tells us traffic volumes and speeds in Nelson South remain lower than the original 2020 pre-project baseline and are very similar to what we counted after the trial was installed in 2021.

This is despite the detours on Waimea Road and Rutherford Street. Volumes are down on the 2020 baseline on Kawai Street from 855/day to 613/day in 2022.

Speeds remain around the same level as we counted in 2021. A drop of around 20% from the 2020 baseline, from 40km/h to 33km/h average speed.

In the 5 years before the project (2016-2020) we had 13 reported crashes. In the 18 months since the trial began, we have seen a more than 50% reduction in crashes.

Due to the project's success, temporary installations will remain until we make layout changes permanent. In the coming years, work is scheduled to renew the footpaths and drainage in the Nelson South area, which represents a perfect opportunity to make the changes permanent.

The next project, known as 'Streets For People', is in development, and we are aiming to place trial road layouts by September 2023. Permanent changes are scheduled between 2024 and 2027, if the trial layout is a success.

If you are interested in taking part in co-design and providing us feedback, we encourage you to contact us at [Council's Customer Service Centre \(546 0200\)](#) or by directly emailing ross.mcphie@ncc.govt.nz.



Track update: great news for mountain bikers

Good news for those of you itching to get out on the bike.

With work to repair the Maitai Raw Water Pipeline now complete, Council has been able to open Maitai Valley Road since midday Friday 11 November.

That means we can provide access to many more trails, including:

Fringed Hill Trails:

With harvesting finished in the Maitai Water Reserve, we have opened:

- Black Diamond
- Sunrise Ridge
- Whaimana (dependent on trees being cleared)
- Crankenstein
- Right Crank
- 629
- Peaking Ridge
- Mutleys
- E Tū

Please note, while these trails were checked post-storm, they have not been ridden/checked since. Expect to see some trees down and other possible issues, especially on E Tū and Mutleys, which have been closed all year.

Coppermine Trail:

The Coppermine Trail is now open all the way through to the dam, with the pipeline section detour in place out via Maitai Valley Road. The section between Four Corners and Third House will be closed long term, with a detour in place up the Sanctuary Fence line.

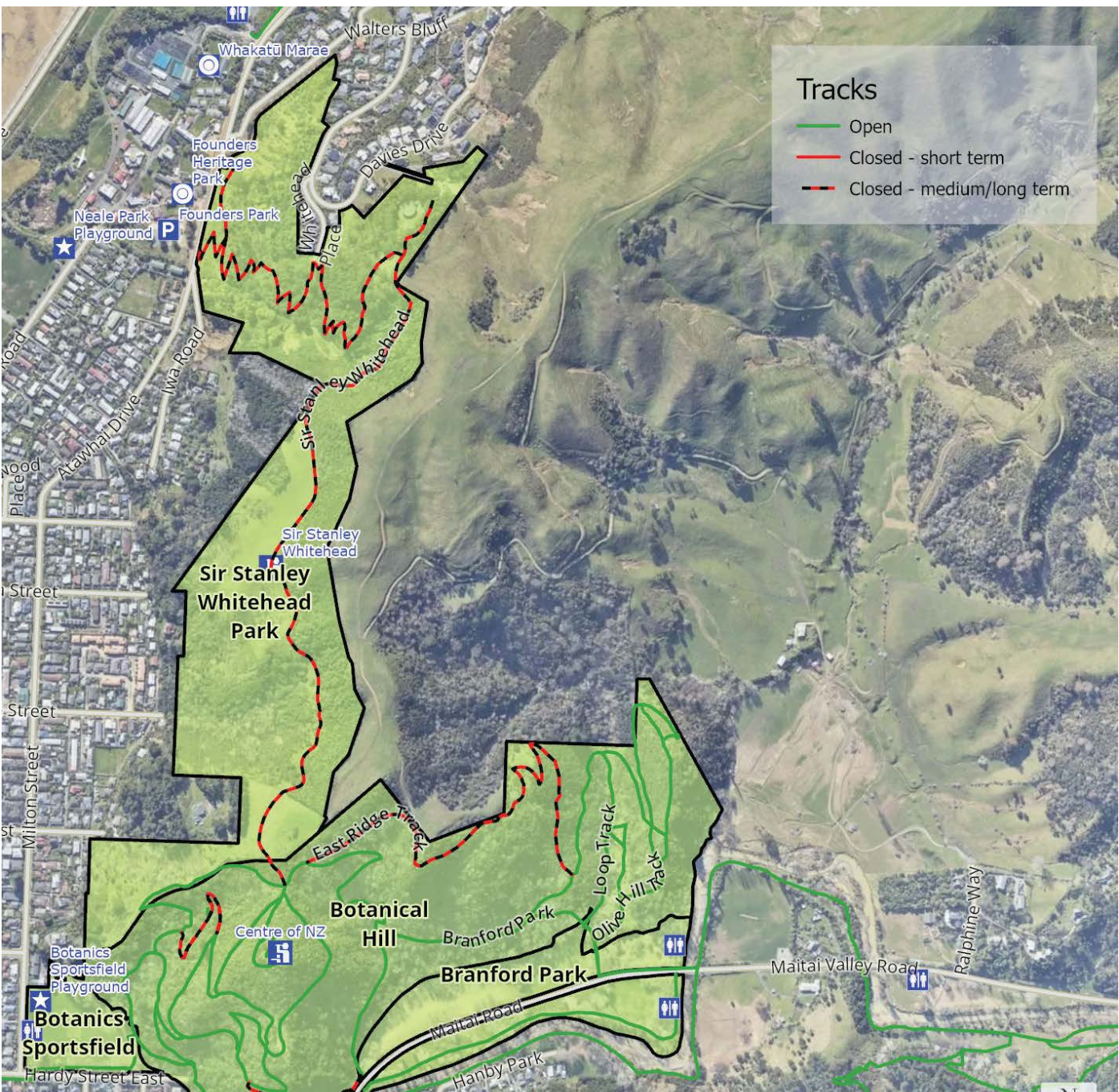
Maitai River Walkway:

Now open all the way up to the Arboretum.

The track narrows to a single lane for the narrow stretch between Almond Tree Flat and the Golf Course due to a washout. Please take extra care – and riders dismount – through this section as the trail will be busy with walkers. This means Golf Course Road is now open also.

For the latest update on mountain bike trails across the wider network go to the Nelson Mountain Bike Club's website: nelsonmtb.club

Please report any trail issues on Trailforks: trailforks.com





Parkers Road closed to speed up completion of drainage work

A section of Parkers Road will be closed from 14 November to 22 December from 7:30am to 6pm to allow Council's contractor to safely and quickly install drainage pipes to the new Awatea Pump Station.

A detour will be in place (see map) and there will be traffic light control at the beach access end of Golf Road. Residents will have access to the closed area and rubbish and recycling bins can be collected and returned on the relevant days. The footpath will remain open for pedestrian access to the Back Beach.

Challenging ground conditions with wet, liquified sand have meant progress to install the new pipes has been slower than expected. The contractor has to install sheet piles to protect the trench where the pipes are being laid so our contractors can work quickly and safely.

Closing Parkers Road will also give our contractor more room to work and allow them to bring their truck alongside the work area, which will be safer and more efficient. The improved efficiency means that the road will be impacted for a reduced amount of time.

We thank you again for your patience and understanding while we carry out these important and challenging works.

Maitai River swimming holes update

Council staff have been hard at work assessing Maitai River swimming holes following the severe weather in August.

The good news is most swimming holes are still swimmable, with only two holes (Sunday Hole and Black Hole) requiring gravel moving work.

Work began this week and is expected to be completed by the end of November, weather dependent.

Gravel will be moved to form beaches that will provide easier access points from the picnic grounds to the swimming holes.

In addition to moving the gravel at these two holes, the rope swing at Black Hole at Branford Park will be removed. Unfortunately, flooding from the August weather eroded the base of this tree, making it unsafe. If Council staff can find another suitable tree we will look at whether it's possible to set up a new rope swing.

We kindly ask you to please stay clear of these swimming holes while work is carried out. There will be heavy machinery in place, which is a hazard to people and pets. Your cooperation will help us complete this work as fast as possible.



Local sponsorship secured for Nelson's Opera in the Park

Tickets for New Zealand Sotheby's International Realty Nelson Opera in the Park are on sale now from eventfinda.co.nz and at the Nelson City Council Customer Service Centre.

The 2023 lineup includes Stan Walker, Annie Crummer, the Christchurch Symphony Orchestra, tenor Oliver Sewell and lyric soprano Madeleine Pierard.

Early bird tickets are just \$25 for adults, \$9 for children 5–15 years, and under-fives free.

A locally owned real estate company has become a major sponsor for Nelson's largest community concert event.

New Zealand Sotheby's International Realty has entered a naming rights sponsorship deal for Nelson Opera in the Park.

The biennial concert will be named "New Zealand Sotheby's International Realty Nelson Opera in the Park". Tickets for the 18 February 2023 concert are on sale now.

The concert is the largest Council-supported community event in Te Taihū (the top of the South Island). The event draws over 6,000 attendees to Trafalgar Park in Nelson for a unique mix of classical and contemporary music.

Nelson Mayor Nick Smith welcomes the sponsorship deal and the benefits it will bring to the beloved event.

"New Zealand Sotheby's International Realty Nelson Opera in the Park is an iconic Nelson event enabling us to celebrate summer and music in a family atmosphere.

"We have not had a naming rights sponsor for more than a decade and COVID-19 saw the 2022 concert postponed.

"This sponsorship is about reinvigorating Nelson's flagship summer event, which presents a great night out for Nelsonians as well as attending visitors to our region."

The New Zealand Sotheby's International Realty Nelson Tasman Managing Director Steve Kelso and Operations Manager Keryn Kelso say supporting the event aligns with their interests and contributes to the community in Nelson.

"As new franchise owners of the Nelson office of New Zealand Sotheby's International Realty, we are delighted to be an integral part of the team bringing a world-class event to Nelson. The last few years have been challenging for many. This phenomenal outdoor spectacle is a chance for our community and beyond to celebrate, unwind, and soak in the atmosphere of wonderfully relaxing summertime entertainment.

"The opportunity to be involved with this event, the largest of its kind in the top of the South resonates with us as we have a long-standing affinity with the world of music, dance, theatre and performance.

"The fabulous Nelson Tasman region is where our hearts lie, having moved to Nelson Whakatū to bring up our family many years ago.

"We are actively involved in supporting the Nelson community across the arts, sport and with the Rotary Club of Whakatū, so this association and collaboration allows us to continue that support in the most meaningful way."



Nelson Mayor Nick Smith toasts sponsorship deal with Keryn Kelso and Steve Kelso, while concert artistic director and councillor Pete Rainey entertains on the violin.

New Council structure follows Mayor's governance reset

At the 10 November Council meeting, Nelson Mayor Nick Smith proposed a new Council structure that allows for a closer working relationship with our neighbours, Tasman District Council, a more efficient way for decision-making and a clearer separation between governance and staff.

"I have proposed with Waka Kotahi and Tasman Mayor Tim King that we have a Joint Nelson Tasman Regional Transport Committee and a single Regional Land Transport Plan," says Nelson Mayor Nick Smith. "The economies and communities of Nelson and Tasman are so interlinked it is common sense for us to plan our transport network together. There is also a benefit for Nelson and Tasman when competing for funding with much larger centres like Auckland and Wellington, by advocating with one voice.

"We will get a better result from a single land transport plan for Nelson and Tasman, managing our state highways, local roads, bus services, cycleways, and walkways. The linkages are reinforced by us sharing a common port and airport."

Previously, transport governance in Nelson/Tasman was carried out by two separate Regional Transport Committees, which produced joint transport plans.

Other changes to governance structure proposed by Mayor Nick included a smaller number of committees, with elected members instead appointed to various taskforces that will make recommendations to Council. The Chief Executive Employment Committee, Audit Risk and Finance Committee, and the Tenders Committee will remain.

"I did not think it was very productive to have standing committees made up of all elected members that in effect debated the same issues twice. I therefore recommended a flatter governance structure with all decisions going to a once-a-month Council meeting. The change to a series of Council taskforces is to ensure a sharper focus on important issues that need resolution.

"The structure is part of the governance reset at Nelson City Council to make Council more business-like, professional and collegial. The scale of change in personnel, with a new Mayor, Deputy Mayor, many newly elected members, and a change in the organisation's Chief Executive next year, means it makes sense to try a new way of working. I have committed to review the committee structure and allocation of roles in consultation with councillors in May 2023; when we will have a new Chief Executive, and councillors will have gained valuable experience in their roles."

The full governance structure can be found at:

Nelson City Council's new members introduce themselves

There are many new faces around Whakatū Nelson's Council table, which had its inaugural meeting on Friday 28 October. Here, are exerpts from the inauguration speeches made by our six new councillors:



Councillor Matty Anderson

Kia ora. My speech was, "Thank you." Yeah, pretty short.

My culture, my friends and my family are important to me. I could have used more words to explain that, but words are wind and often easily forgotten. I started by performing the RNZN (Royal New Zealand Navy) Haka, assisted by an old shipmate. My youngest son Rocco then led my beautiful non-nuclear family in singing 'Sipaio'. A Niuean song of joy composed by my late grandfather. I carried his walking stick that day. My eldest son Ludo then led a Niuean war dance, 'Si Kai Tangata'. I also had a necklace placed on me which is customary. My mama could not make it to the ceremony, so I used a substitute Kuia whom I hold dear.

I haven't been a haka guy for over a decade. Performing in front of strangers at such a significant occasion was very uncomfortable. But it was also the right thing to do. In all I do a carry my friends, family, and culture with me. I think those present know that now. And I don't think they will forget.

Ngā mihi mahana.



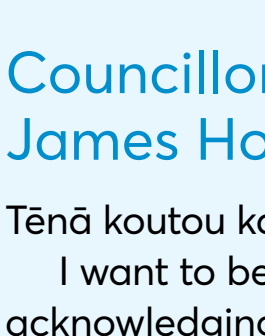
Councillor Matthew Benge

Tena koutu katoa – hello everyone

Thank you to the people of the Stoke Tahunanui Ward for the faith you have shown in me to represent you at the Council table. I will do my best.

To Mayor Nick and my fellow Councillors I look forward to working with you all to help guide our Waka – the good ship Nelson – through the next 3 years. We will all have one hand on te ngaki or tiller. I have never served on Council before but have spent a lot of time at sea and know that the steadier the hand the further you will go. We all come from different backgrounds and points of view, but this is a strength, and we can disagree, dissent, oppose etc but we must also listen and then come to a consensus. I want by the end of this term to be proud to have had my hand on the tiller with all of you and vice versa. I believe we can do that.

To the Council Staff, the ones that do the work, the ones that make our city tick, the ones that make it what it is. I have questions. I want to learn. Teach me.



Councillor James Hodgson

Tēnā koutou katoa,

I want to begin by acknowledging my sense of hope, when I consider my twelve elected colleagues chosen by Nelson to represent them over the coming three years. I have confidence in our ability to demonstrate collaborative focus for our community.

My position on Council is a continuation of my career in social work, and I continue to seek improvement in critical issues such as housing, mental health and strengthening our community sector. Yet the wellbeing of our community hinges on the effective provision of all aspects of Council operations, from dependable infrastructure to accessible transport, through to kind and open communication with the public.

I enter this role with the acknowledgement of my own blind spots, and with an invitation for further conversation. My sincere hope is that our community would find me approachable and receptive and would guide me to see clearly your aspirations for Nelson.

One thing that is abundantly clear to me is that I only stand here today because of my wife, Ruby, who stands beside me. She is the perfect combination of ambitious and selfless, taking on study, family life, as well as choosing to support me. I want to end by acknowledging her.

Ngā mihi nui.



Councillor Campbell Rollo

I write this message as a newly elected member of the Nelson City Council to share my excitement for the new role. A proud third-generation Nelsonian, I am a proud to call Nelson home and it is the reason why I stood for Council.

We must continue to thrive as a region and look at what's around us to carry on building the foundation for future generations. My commitment for the next three years is to work hard for Nelson and bring an approach to Council that is fresh, puts the community first and is truly accessible for all.

My background is one that is often the theme for young people. Leaving school and unsure what path to take, I was a far hill from the council offices. In fact, it wasn't until I hit 18 that I realised how important local government is for our regions. I am truly excited to be a part of a Council team that's committed to doing the very best for our region. I look forward to getting to work and being active in the community as we approach the summer.

"He waka eke noa": We are all in this waka together.



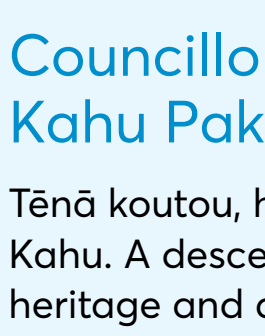
Councillor Aaron Stallard

Tēnā koutou katoa.

I would like to acknowledge the people of Nelson Whakatū for electing me to Council. It's an honour and a privilege.

I grew up in a state house in the Brook Valley, in a solo-mother household with my two sisters. I studied geology at university and did a PhD working in the Appalachian Mountains in North America. In 2006 I established a business that helps researchers in Asia and elsewhere publish their work. As a geologist at the Council table I would like to see a greater understanding of our dependence on the health of ecosystems, wildlife, and nature, of which we are a part and in which our systems are deeply embedded.

It is our shared responsibility, and I would hope a priority of this Council, to shape human activity in the region so it occurs within safe environmental limits, which means housing intensification, a rapid shift to active and public transport, renewable energy, systems that are resilient to shock, people-friendly urban spaces, wholesome local food in season, and a just, cohesive and politically engaged community. In this way, it is my hope that current and future generations will enjoy a rich and meaningful life.



Councillor Kahu Paki Paki

Tēnā koutou, hello everyone! I'm Kahu. A descendant of our region's heritage and a proud product of our community.

I wish to acknowledge those in recent memory who paved the way for our voices to be heard and are no longer with us. Haere, haere, haere.

Without doubt this role is of huge significance to the Māori community that extends beyond the limits of the Nelson Māori Ward.

It is critical to remind ourselves that this opportunity is about governance, not politics. Iwi Māori have long deserved inclusion in local governance and this seat is simply that: a chance for us to sit at the table and be represented. I have no doubt our whole community will be better for it.

I want this city to be the one my children inherit. He tino nui te wero, ka nui te mahi! The challenge is great, but the work is important.

My mission during my tenure is to prove that there is an irreplaceable value in securing the future for our community and demonstrate that we deserve this seat at the table of governance. We all belong here.

Nō reira, tēnā koutou, tēnā koutou, tēnā tātou katoa.

Learn more about all of Nelson's elected members and how to contact them at: nelson.govt.nz/contact-the-mayor-or-councillor

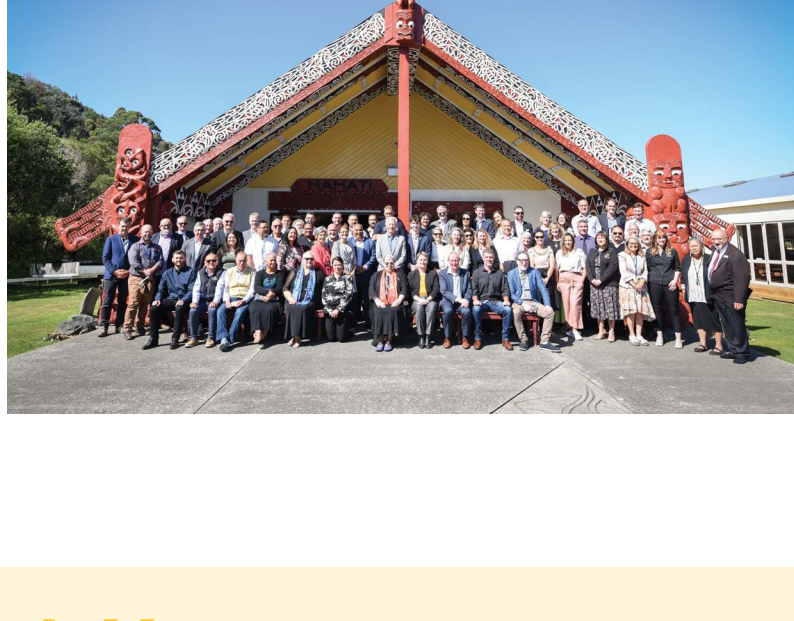
Strengthening partnerships between iwi and councils across Te Taihu

On Wednesday 7 November, the eight iwi of Te Taihu hosted an induction for councils of Nelson City, Tasman and Marlborough Districts, coming together for the first time at Whakatū Marae.

The unprecedented meeting came about at the start of the new Council triennium to set the foundation for a meaningful relationship that honours true partnership.

The eight iwi Ngāti Apa Ki-te-Rā To, Ngāti Kuia, Rangitane o Wairau, Ngāti Toa Rangatira, Ngāti Kōata, Ngāti Rārua, Te Ātiawa o Te Waka-a-Māui, Ngāti Tama ki Te Tau Ihu, with the support of Ngāti Rārua Ātiawa Iwi Trust, and Wakatū Incorporation, were looking to explore the relationships, expectations and possible range of benefits that can be realised from such a regional partnership.

This event builds on the collaborative work we have already achieved as a group with the recent adoption of the Te Taihu Inter-generational Strategy. Now that we have more tools and a shared vision, it is only natural we look to further opportunities for collaboration and strengthening of our partnership.



Mayor's Message

If you were driving or taking the bus in Nelson the first weekend in November, there's a good chance you ended up in the traffic chaos caused by the closure of SH6 Whakatu Drive.

Journeys that would normally take 15 minutes took up to four hours. I received hundreds of messages from doctors trying to get to the hospital, sports teams who missed games, people missing flights, and mums having to feed distressed babies on the roadside. Thousands of people were disrupted by the gridlock.

Nobody in Nelson questions the need for the re-sealing of our highways. We all accept this will cause some inconvenience, but I do think more could have been done to avoid gridlock.

I question whether this work should have gone ahead while urgent flood repairs have resulted in the closure of another section of SH6, between Nelson and Blenheim. The closure also clashed with work being carried out by Nelson City Council to upgrade sewerage on lower Saxton Road, that has been underway for around seven weeks and in our work programme for much longer.

Previously, this sort of work has been staggered over multiple evenings by doing the highway in segments and one lane at a time. I understand that Waka Kotahi's current policy recommends full road closures to protect the safety of workers and speed up completion times. We need to work more closely, and with a little more

common sense, to avoid situations like this happening again.

I have written to the Minister of Transport protesting the poor coordination and communication. I worry the Government through Covid has reverted to a closure culture. Nelsonians accepted an unprecedented scale of disruption for the pandemic, but the tolerance has worn and the Government needs to be much more careful in planning and communicating closure of key highways like Whakatu Drive.

The traffic snarl up also highlights the vulnerability of the network between Nelson and Richmond. We have also had similar gridlocks from road accidents and weather events. We need to build more resistance into the transport links between Nelson and Richmond.

I will be advocating for a link road between Suffolk Road in Stoke and Hill Street North in Richmond to provide an alternative route.





Buy your wood NOW and SAVE!

Nelson City Council, Tasman District Council and selected Good Wood suppliers are offering a limited number of \$25 firewood discounts to Nelson and Tasman residents who buy their firewood before 23 December 2022. Participating suppliers are:

- **Bay Firewood, 027 769 6348**
- **Buyright Firewood, 021 127 8957**
- **Quality Firewood, 027 449 0622**
- **Richmond Wood and Coal, (03) 544 6473**
- **Wholesale Firewood, (03) 546 9595 or 027 922 9611**



Minimum load size 3m³ to qualify for a discount. One discount per household. Promotion finishes 23 December 2022, or until fully allocated, whichever comes first. Nelson residents visit nelson.govt.nz/burn-bright or call 03 546 0200. Tasman residents visit tasman.govt.nz/good-wood or call 03 543 8400.



Buy your firewood before the festive season to beat the rush and save!

Nelson City Council, in partnership with Tasman District Council and Good Wood suppliers, are offering a limited number of firewood discounts to Nelson residents who buy their wood in November and December, ahead of next year's winter rush.

Nelson and Tasman residents are eligible for a \$25 discount off the price of one load of firewood per household (minimum load size 3m³ to qualify).

The promotion runs until 23 December 2022, or until fully allocated.

Good Wood suppliers are committed to supply either:

- Dry, seasoned firewood, suitable for immediate use can be stored away immediately. This is wood that has a moisture content of less than 25% dry weight; OR
- Green (unseasoned) firewood delivered sufficiently far in advance of winter so that, if properly stored by the user, the wood will be seasoned for use for the following winter. You will need to allow this wood to season (dry) properly before storing.

When discussing your firewood requirements with your Good Wood supplier make it clear whether you are happy to receive green wood to dry over summer, or if you prefer seasoned wood that you are planning to store away immediately.

Good Wood suppliers taking part are:

- Bay Firewood 027 769 6348
- Buyright Firewood 021 127 8957
- Quality Firewood 027 449 0622
- Richmond Wood and Coal
03 544 6473
- Wholesale Firewood 03 546 9595 or 027 922 9611

Some Good Wood suppliers are also offering buy now, pay later terms – ask the supplier for details.



MEETINGS

The following meetings of the Nelson City Council have been scheduled.

Council meeting

11:30am

25 Nov

Joint Shareholders Committee

11:30am

29 Nov

Joint Committee of Tasman District and Nelson City Councils

1pm

29 Nov

Council meeting

9am

15 Dec

For a full list of meetings go to:

nelson.govt.nz/meetings



To sign up for Our Nelson by email go to:

nelson.govt.nz/our-nelson



Completed

Isel Park Bridge Replacement, Residential Meters Renewal, Centennial Park Pumpstation Upgrade.

Ongoing



End date			
Project name	(if known)	Location	Benefit
Saxton Creek Upgrade Stage 4	End of Oct 2023	Main Rd, Stoke	Flood mitigation
Washington Valley Infrastructure Upgrade – Stage 1 (Hastings Street)	May 2023	Hasting Street	Improve stormwater network and reduce flooding risk
Awatea Place Wastewater Pump Station	February 2023	Awatea Place & Parkers Road	Improve wastewater network capacity and protect environment from overflows
Te Pā Harakeke	Public open day 26 November 2022	Tahunanui Reserve	New community playground and reserve area
Wastney Terrace Stormwater Upgrade	February 2023	Atawhai Crescent (Corder Pond) via private property to Wastney Terrace	Improve stormwater network capacity and reduce flooding risk
NRSBU Sewer Line Installation Section 8	March 2023	Saxton Road, Stoke	Improve the wastewater network

Upcoming: York Terrace Stormwater Upgrade, Jenkins & Arapiki Stopbank (Nelson Airport), Strawbridge Sq Stormwater Upgrade, Founders Collection Store Upgrade, Bayview Road Playground, Saxton Road Sewer Renewal Section 5-7, Nelson Crematorium Flue Replacements

Kirby Lane

Rock the City – Friday 18 November, Friday 2 December & Friday 9 December,
1pm – 2pm

Saxton Field

FTSNT Kirikiti – Saturdays, 12 & 19 November and 3, 10, 17 December,
10am – 1pm

Saxton Stadium

Table Tennis Nelson - Junior Coaching – Monday 8 August 2022 – Tuesday 8
August 2023

Summit Challenge – Monday 21 November, 3:30pm – 6pm

Trafalgar Centre

Dancing Queen: A Tribute to ABBA – Tuesday 6 December, 8pm

Gindulgence – Saturday 10 December, 1pm – 7pm

1903 Square

Rock the City – Saturday 12 & 19 November, Saturday 3 & 10 December,
12pm – 1pm

Trafalgar Park

Marching NZ South Island Championships 2022 – Saturday 3 & Sunday 4
December

Rutherford Park

Adult Hip-Hop Beginner Course – Saturday 3 & Sunday 4 December

Founders Heritage Park

Print and Bind – Thursday 17 November, 9:30am – 12:30pm

The Great Christmas Market – Sunday 20 November, 9am – 4pm

Tiki Taane – Saturday 26 November, 7pm – 11pm

Founders Summer Reads Book Fair – Saturday 10 December 2022 – Sunday 15
January 2023, 10am – 4:30pm

Stoke Memorial Hall – Temporarily Closed

Isel House and Park

Isel Twilight Market – every Thursday, 4:30pm – dark

Nelson Public Libraries:

Elma Turner Library – Open as the Pop-up Library

Hours: Monday, Tuesday, Thursday, Friday: 9:30am – 6pm

Wednesday: 10am – 6pm

Saturday: 10am – 4pm

Sunday: 1pm – 4pm

Device Advice – Thursday 17 & 24 November and Tuesday 22 November,
2pm – 3pm

Crafty Creators – Tuesday 22 & 29 November, 3:45pm – 4:45pm

Small Time – Wednesday 23 & 30 November, 10:30am

Pop-up Pukapuka – Wednesday 14 December, 5:45pm – 6:30pm

Nightingale Library Memorial

Hours: Monday – Friday: 10am – 4pm

Saturday: Closed

Sunday: 10am – 2pm

Tea & Tales – Dementia Friendly Book Group, every Wednesday, 11am – 12pm

Device Advice – Friday 18 & 25 November, 2pm – 3pm

Author Talk – Tales from living and working in Africa – Sunday 20 November,
11am – 12pm

Nellie Knitters – Monday 21 November & Monday 5 December, 1pm – 4pm

Small Time – Tuesday 22 & 29 November, 10:30am

Wellby Talking Café – Thursday 8 December, 10am – 11:30am

Christmas Shared Reading – Wednesday 14 December, 11am – 12pm

Stoke Library

Hours: Monday, Tuesday, Thursday, Friday: 9:30am – 5:30 pm

Wednesday: 10:00am – 5:30pm

Saturday: 10am – 1pm

Sunday: Closed

Reading to Billy the Dog – every Wednesday, 3:30pm – 4:30pm

Small Time – Friday 18 & 25 November and 2 December, 10:30am

Techy Time – Friday 18 & 25 November and 2 December, 3:45pm – 4:45pm

Device Advice – Tuesday 22 November, 2pm – 3pm

Shared Reading Christmas Poetry – Tuesday 13 December, 11am – 12pm

Museums and Galleries:

Broadgreen Historic House

Hours: 10:30am – 4:30pm Daily

Small Loom Weaving – Christmas Decorations – Sunday 4 December,
10am – 4pm

The Suter Art Gallery & Theatre

Hours: 9:30am – 4:30pm Daily

Exhibition: Rita Angus New Zealand Modernist He Ringatoi Hou o Aotearoa –
Saturday 8 October – Sunday 4 December

Exhibition: Bird in Space – Saturday 19 November – Sunday 12 February

NSAS Summer Cash and Carry – Tuesday 22 November 2022 – Sunday 22
January 2023, 9:30am – 4:30pm

Exhibition: Place Holder – Saturday 5 November – Sunday 26 March 2023

Refinery ArtSpace

Hours: Monday – Friday from 10am – 5pm, Saturday from 10am – 2pm

Earth Emotions – Tuesday 1 – Saturday 19 November, During opening hours

Event Drums and Flute Concert/Workshop – Saturday 19 November,
2pm – 4pm

Ngahere – The Bush of Aotearoa, Professional Weavers Network of NZ Inc –
Tuesday 1 – Friday 25 November, during opening hours

Nelson Provincial Museum

Hours: Weekdays from 10am – 5pm, Weekends & Public Holidays from
10am – 4:30pm.