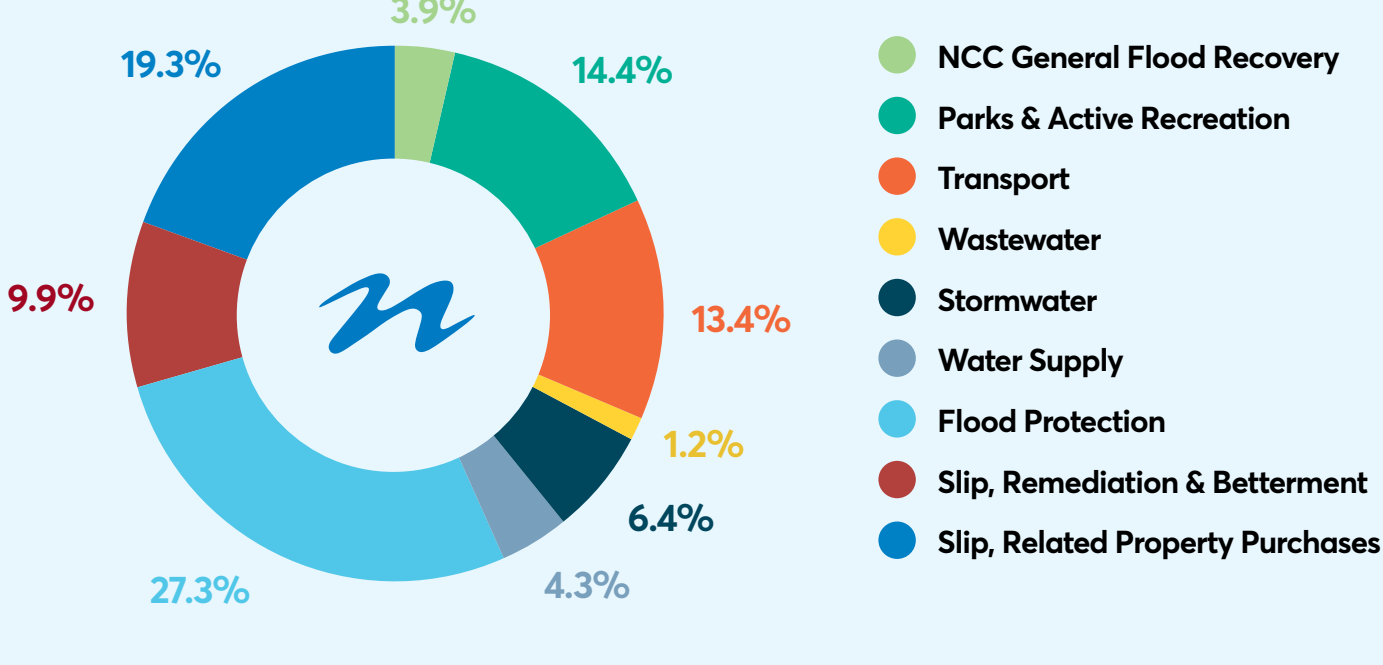


### Storm recovery charge – where your \$300 goes

This year's Long Term Plan included a \$300 dollar charge per year for the next ten years to help pay for recovery from the August 2022 storm. The Storm Recovery Charge will be used for a wide array of vital recovery projects including slip remediation and stormwater improvements.

Flood protection makes up the largest portion of the charge at 27.3%. Take a look at the pie chart to right to see the full breakdown of where the \$300 charge is being spent.



### Pragmatism and partnership hallmarks of Nelson's recovery at second anniversary

Nelson City Council is well advanced in its recovery work from the August 2022 weather event due to innovative engineering in managing complex landslides, pragmatism in buying homes too expensive to make safe and a successful partnership with Government in sharing the costs of repairs and improving resilience.

"The most difficult political problem has been finding a solution for the homes put at risk by landslides but where the cost to make them safe exceeded their value. This has been a nightmare scenario for the families affected," says Nelson Mayor Nick Smith.

"Our pragmatic solution of Council, with 50% Government funding, buying out these properties is well advanced. We have settled 10 out of 17 and my hope is to have all resolved this year.

"We are delivering on our commitment to build back better. It makes no sense to replace what failed in the August 2022 event but the extra cost of strengthening is adding tens of millions to the repair bill. I am confident Nelson would have much less damage were we to get a repeat of the August 2022 weather event albeit we are expecting more frequent and damaging storms with climate change."

The financial pain of the storm is hitting Nelson households with the new rates bills, which include a \$300 a year per household storm recovery charge for the next decade.

"Council is grateful for the support of Government in the \$12.3 million deal that has offset the cost to ratepayers. This has been further boosted this week by a further \$9 million of support from the new Regional Infrastructure Fund for strengthening the Maitai River stop banks and improving stormwater systems. Our Nelson storm recovery has been helped hugely by the successful partnership between central and local government."

#### Fixing slips

Council staff have used a ground-breaking approach to resolve some of the more complex slips throughout Nelson.

More than 200 landslides were triggered in the event and fixing as many of these as possible remains the most complex part of the ongoing recovery work.

With Council working on 18 major locations within the urban area requiring a resilience lens, plus the locations within parks and reserves, many of the remediation projects called for a unique and creative approach.

Group manager of Infrastructure, Alec Louverdis, who was also the Civil Defence Group Controller for the weather event, says some of the sites presented unique challenges.

"For many of these projects consultants had to search further afield to explore options for remediation. We've had quite a few instances where they have found a little-known project from overseas, then applied that to our situations, creating a first of its kind fix for our region," he says.

The Grampians and Brook Street are two projects where access presented the biggest challenge and required some innovative thinking. With no roads or driveways available, and many steep and slippery tracks, standard trucks were unable to reach the slip sites and specialist equipment (such as trucks on tracks which are similar to tracks on a digger) had to be brought in from outside the region.

Alec says each of the five slip sites on the Grampians have required a different approach.

"It's imperative each site also includes stormwater improvements, as we continue to work towards stormwater resilience in our city," he says.

A recently completed slip repair and prevention project on Brook Street was another project that required a complex solution.

A large catch-fence that included a combination of 16 vertical posts and 64 ground anchors drilled 6m into the hillside rock and underground with anchor ropes connecting it all together is designed to stop future landslides impacting nearby residents' homes.

#### Major milestones achieved

- Repair of the water main from the Maitai Dam and SH6 repairs
- Repair of six major slips with nine additional slip sites under construction or phased to commence before the end of the year
- Fixing damage to 31 high priority stream/river bank sites
- Removal of 43,000m<sup>3</sup> of gravel from rivers and streams across Nelson
- Repairing several slips and returning Cable Bay Road, Maitai Valley and Brook Street to 2-way traffic
- New bridge and pump track at Waahi Taakaro Golf Course
- Ten out of 17 properties bought out
- \$31.7m of funding secured from Central Government – this includes the \$12.3m buyout package, \$9m from the Beyond the Deluge flood protection package, funding from the National Emergency Management Agency and NZTA.
- 97% of trails restored across Nelson reserves

#### A strong recovery takes time

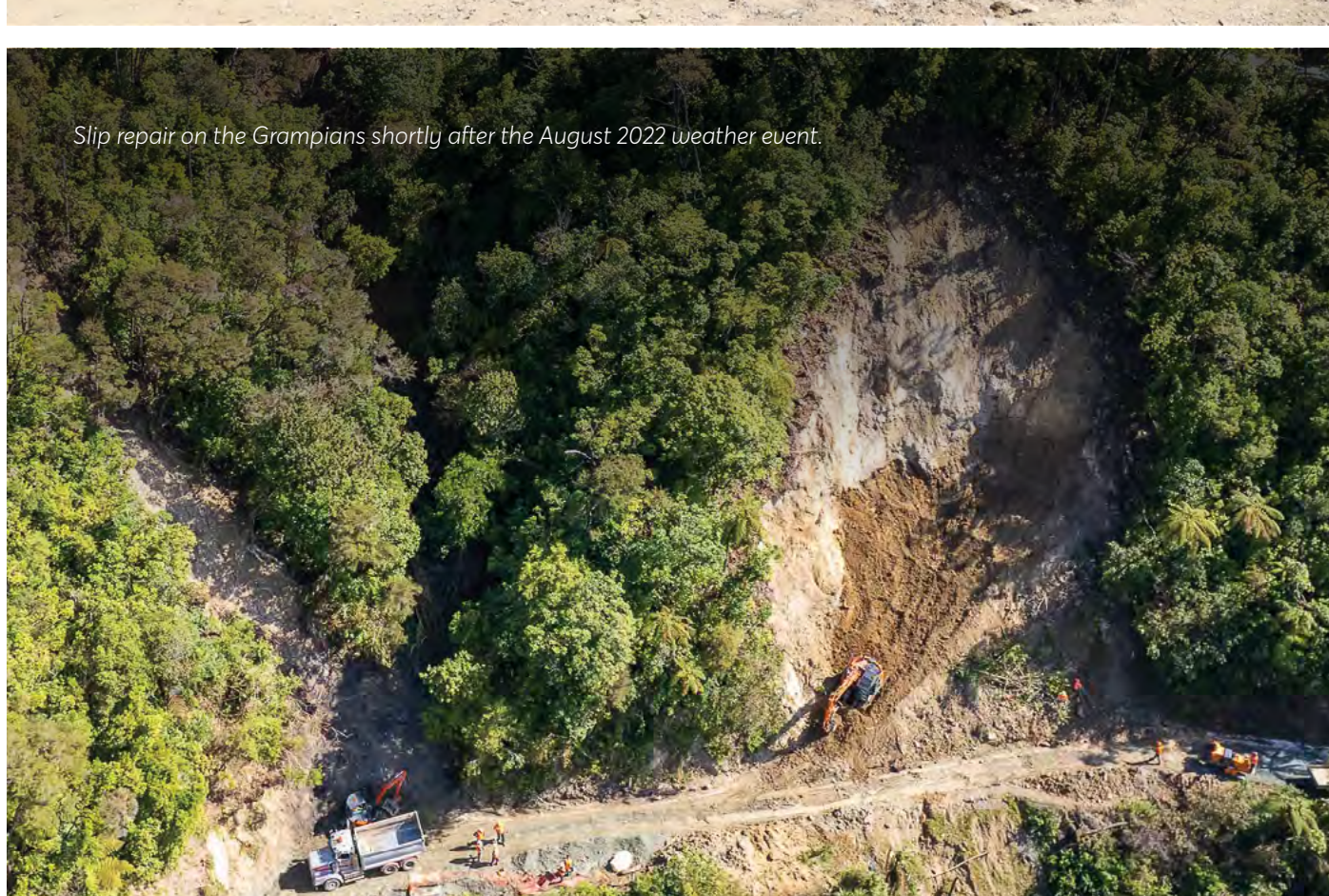
The severity of the August 2022 weather event is still difficult for many to comprehend, an aspect which has also compounded the amount of time the remediation is taking.

Alec, when acting as Civil Defence Group Controller, described the amount of water flowing down the Maitai River as the equivalent of 500 VW Beetles per second, in comparison to just two at normal flow.

"The impact of the storm on our region was huge," says Alec, "and there is a repair job to match. However, the fact that we have spent \$50m of the proposed \$90m recovery cost is a good indication that our work is on track and we are further ahead at this point than we initially anticipated."

Storm recovery remains Nelson Mayor Nick Smith's top priority and he says he knows the time it's all taking is frustrating.

"We are at the hard-grind phase of the recovery. I know that the \$300 levy is an extra burden at a tough time but am determined that we push ahead with the work to get the recovery job done," he says.





## Help plant Nelson's hanging flower baskets

We're seeking passionate floral enthusiasts to help us plant the vibrant hanging baskets that brighten our city centre each summer. If you love flowers, want to learn new skills and have time to volunteer, we'd love to have you on board!

Around 700 baskets will be planted in total and installed in early December.

This year we're trying something new by having two sessions of planting one month apart. The plantings will take place at the Nelmac Nursery on Atawhai Drive next to Whakatū Marae and Miyazu Japanese Gardens.

The 90-minute sessions will see you planting petunias, impatiens and geraniums. Nursery staff will be on-hand to help and advise, if needed.

Past volunteers have said they really enjoyed the planting process, and it's a good skill to learn, as you can then go home and create your own hanging baskets.

**The session times available are as follows:**

### First sessions

- Monday 23 September, 9.00am–11.30am and 1.00pm–3.30pm
- Tuesday 24 September, 9.00am–11.30am and 1.00pm–3.30pm

### Second sessions

- Monday 21 October, 9.00am–11.30am and 1.00pm–3.30pm
- Tuesday 22 October, 9.00am–11.30am and 1.00pm–3.30pm

All you need to bring is your own gloves, sturdy footwear and a good dose of enthusiasm.

If you would like to volunteer as a hanging basket planter, call Council Customer Services on 03 546 0200 to register.

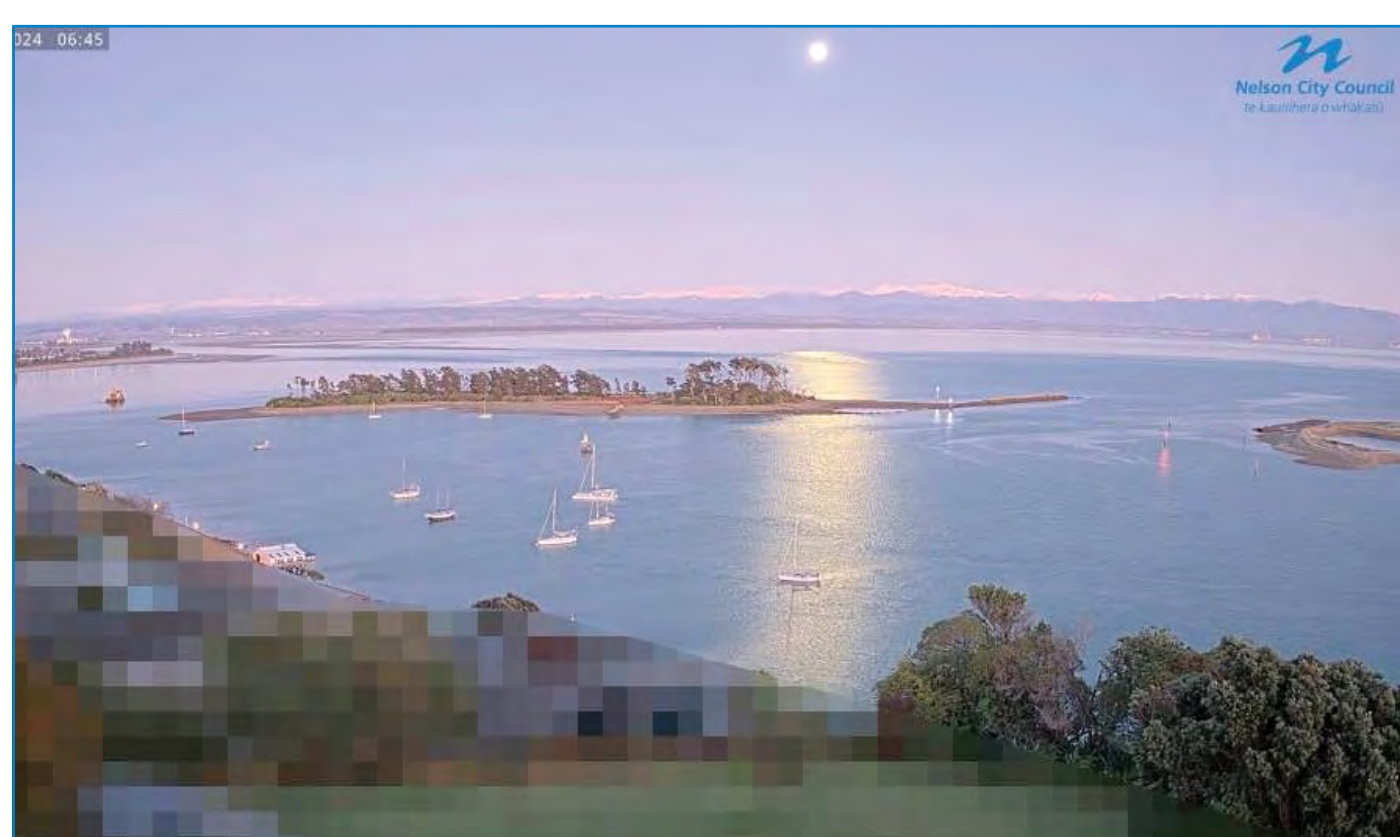


**SOFT PLASTIC KERBSIDE COLLECTION TRIAL IS BEGINNING IN NELSON**

**140 NELSON STREETS HAVE BEEN CHOSEN TO TAKE PART. KEEP AN EYE ON YOUR LETTERBOX TO SEE IF YOU'VE BEEN SELECTED.**



Proudly supported by  
Nelson City Council



### Exciting news for all harbour enthusiasts

The Nelson Harbour Master team is thrilled to announce brand new harbour cameras, which will broadcast a crystal clear view of the harbour live on our website: [nelson.govt.nz/environment/harbours](https://nelson.govt.nz/environment/harbours)

This initiative, supported by Maritime NZ's generous funding, will help boaties, paddle boarders, kite surfers and anyone else heading out onto the water assess conditions in the harbour before heading out to sea.

We can't wait to unveil this feature – watch this space for updates!

## Two Our Nelsons in one week?

You may have noticed that your copy of the Nelson Weekly has an eight page Our Nelson issue inside it dated 14 August.

Unfortunately, this issue was not delivered to households due to a mix-up with one of our delivery suppliers.

We've decided to deliver the issue to homes later than planned as there are many stories in it that are not time sensitive. Please be aware that some of the event listings are for things that have now happened! Apologies for the inconvenience.

**To stay up to date with the latest news, information and events happening in Nelson City, subscribe to the Our Nelson e-newsletter online at our website:**



[our.nelson.govt.nz/subscribe](https://our.nelson.govt.nz/subscribe)

Alternatively, you can view the web, text and mobile versions of Our Nelson, including past issues, online at our website:



[our.nelson.govt.nz/issues](https://our.nelson.govt.nz/issues)



Find all upcoming meetings on the Council's website:  
[nelson.govt.nz/council/council-structure/council-meetings](https://nelson.govt.nz/council/council-structure/council-meetings)