

Sophie Labelle draws a crowd at the library

Sophie Labelle, French-Canadian webcomic artist and trans-activist, has travelled to Nelson from Finland, via Wellington.

"I got off the ferry in my car and there were lines and lines of campervans. You don't see that in the North Island," she says at the Elma Turner Library on Saturday.

"It's like they just appeared on the ferry!"

Sophie is the creator of the webcomic Assigned Male, which follows trans girl Stephie and her queer friends as they negotiate school, family and relationships.

"I started drawing it to entertain my queer friends at school," she says. "I wanted to create something where a trans person was at the centre.

"I was the subject of some bullying, because of the whole gender thing. So, comics became a sort of shield. My friends would say 'oh don't bully her, she draws comics', and the bullies would say 'can you draw me something?'"

Sophie's parents were both cisgender.

"They're very active in the straight community," she says, wryly. "Imagine being assigned a gender and just running with it!"

During the talk, Sophie explains how she deals with online hate.

"It's called sea-lioning. When someone writes a long argument about why they hate you, you answer with a simple question. Like, what do you mean?"

"It's the least effort possible and gets the hater talking... sweating at their keyboards. It's good to take the haters on the adventure."

Sophie talks about how exhausting it is for trans people to have to constantly justify their existence.

"It could be so lonely growing up in the 90s. I was the only trans person I knew. What I find most rewarding about being trans now is being part of such a warm community. A group of people who all feel like me."

The event was organised by Q Youth, a charitable organisation dedicated to supporting young queer and trans people.

"We had five or six young people from Q Youth here today," says Q Youth manager Kayla Bafico.

"We know some young people who don't feel like they will make it past 13, which is why it's so important to offer them the opportunity to see a trans person who hasn't just survived but thrived."

Sophie's advice for young artists?

"Don't underestimate planning. I always want to jump straight to the fun part, but it's heartbreaking when you start and realise you need to change course. Plan well, and then get to the fun bit."

White Ferns take on Nelson

The White Ferns touch down in Nelson at the end of the month taking on rivals England in twin International T20's.

- Saxton Oval: Friday 22 March and Sunday 24 March
- Tickets selling fast tickets.nzc.nz

Intepeople's Business Women's Network

To celebrate the summer of Cricket, the Nelson Chamber of Commerce proudly present Intepeople's Business Women's Network with former White Fern, Katy Martin chatting about her illustrious career.

- NMIT G Block, Thursday 21 March, 5pm – 7pm
- \$15 for members, \$30 for non-members
- Tickets available commerce.org.nz

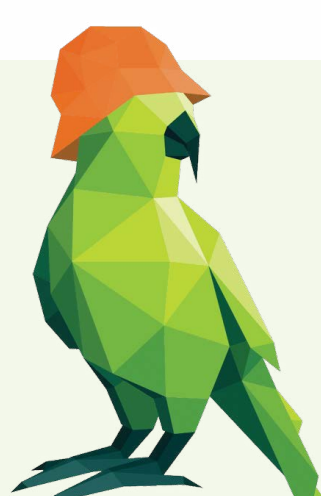
Women's Summer Smash Festival

Looking for a family day out? The Women's Summer Smash Festival hosted by Nelson Cricket, a festival of cricket and a great event to fill out the weekend of Cricket.

- Greenmeadows, Saturday 23 March 12.30pm

Special guests White Ferns are making an appearance, 3.30pm-4.30pm so don't miss out on an opportunity to meet your favourite players.

Find out more on Nelson Cricket's Facebook!



Nelson Fringe Festival returns with theatre, music, comedy, improv, dance and so much more. It's all about a line-up of 48 one-hour shows in small venues with cheap tickets. Fringe is about life on the edge – it's stories and laughs and music that is happening right now. It's your chance to get fringey.

14 – 23 March at Refinery ArtSpace, Studio One & Red Door Theatre. nelsonfringe.co.nz

Celebrating and exploring the stories of Whakatū Nelson

Whakatū Nelson's treasure trove of stories is set to be explored through Tuku 24 Whakatū, a collection of events, shows and activities that canvas the unique cultures, people, art and tales of our region.

The word "Tuku" was gifted to Council in 2021 and means "to share" or "exchange" in Te Reo Māori. It is an expression of our unique stories, histories and heritage, and reflects the value of biculturalism.

This year, Tuku 24 includes just under 100 events and takes place over six weeks, starting 24 March.

Andrew White, Group Manager Community Services says Tuku 24 is an invaluable opportunity for learning.

"Tuku 24 gives our community a chance to experience the diverse stories that weave together to form Nelson's past, and in doing so, offers a chance for us all to deepen our understanding of our city, our community and our heritage."

The opening day of Tuku 24 includes a celebration of the many cultures that call Whakatū Nelson home - the Multicultural Festival. Taking place on Sunday 24 March at Founders Heritage Park, visitors will be treated to an around-the-world trip by way of food, musical performances, dance and activities.

From there, a range of choices await. From chances to dig into your own ancestry, fatal fashion from the past, the art of horology, guided walks, tea tasting, concerts and woodworking, there is something for everyone.

Events in the Tuku 24 calendar include:

- The Ki Ngāwari Kapa Haka Club's anniversary show, 50 years in the making
- The Nelson Institute Presents: Nelson's Autobiography in Buildings. A presentation and talk by architect, author, and artist Christopher Vine
- Ram Navami Shobha Yatra – Join members of Nelson's Indian community as they sing and dance their way through the central city in a blessing procession
- Waka tours aboard the Hinemoana – Te Toki Voyaging Trust will be sailing the waka hourua Hinemoana to Nelson Marina, offering public waka tours and activities.

Visit tukuwhakatu.nz to learn more. The full programme of events will be released 19 March and will be available online at tukuwhakatu.nz, at Council's Customer Services Centre and the Nelson Public Libraries.



Council Digest – 7 March Meeting

Tāhunanui Back Beach

Elected members have agreed to a plan to remove contaminated sawdust, wood offcuts and sand from Tāhunanui's Back Beach, opting to reinstate the area with low-level dunes and build a new, repositioned car park. The overall cost is \$5.8 million.

Increase to road maintenance budget

Additional funding of \$400,000 has been approved to address urgent remedial works on key bus routes and bus stops before the onset of winter.

Funding approved for Saxton Creek Stage 4

Additional funding of \$400,000 has been approved to complete the Saxton Creek Stage 4 Stormwater upgrade.

Plan Change 29 hearing panel extended

An additional, independent commissioner, will be added to the Plan Change 29 Hearings Panel, bringing the panel up to four. This person will bring additional experience and specialist expertise to assist the panel with understanding the hazard information put to them. The Panel will consider, hear, deliberate and decide on all submissions and further submissions on Plan Change 29.

Climate Change

An audit of Council operations emissions shows a downward trend. Emissions for 2022/23 are down 89% (since 2017). Mainly from reduced emissions from capturing and flaring methane at the landfill.

Car Sharing policy

Council adopted a Car Sharing Policy, which will support companies that wish to establish in Nelson. The policy allows free parking for car share vehicles for the first two years and lower fees thereafter for vehicles with the lowest emissions. Non-EV or hybrid cars can be allowed on a temporary basis but Council's aim is to encourage EV use.

Public Notice

Nelson Resource Management Plan

Public notice of summary of new decisions requested and further submissions invited on additional submission points on proposed Plan Change 29.

Clause 7(1), First Schedule, Resource Management Act 1991 (RMA)

Nelson City Council (NCC) gives notice as of 8 March 2024 that a Summary of Decisions Requested for two late submissions received on 8 February 2024 and 4 March 2024 to proposed Plan Change 29 (Housing & Hazards) to the operative Nelson Resource Management Plan is available for inspection at the following locations:

- Nelson City Council Customer Service Centre, Civic House, 110 Trafalgar Street, Nelson (hard copy also available)
- Elma Turner Library, Halifax Street, Nelson
- Nightingale Library Memorial, Tāhunanui
- Stoke Library, Putaitai Street, Stoke (hard copy also available)
- Online: shape.nelson.govt.nz/plan-change-29

The original submissions are also available to view in full at shape.nelson.govt.nz/plan-change-29/submissions-library.

Further submissions

Further submissions are now invited in support of, or in opposition to, the two late submissions (948 and 949) received. Any person representing a relevant aspect of the public interest, or who has a greater interest than the general public, can make a further submission on submissions 948 and 949. Please note that a further submission cannot extend the scope of an original submission, it can only support or oppose the original submission. Further submissions on submissions 948 and 949 must be made in the prescribed form and can be lodged electronically by using the online submission form at shape.nelson.govt.nz/plan-change-29.

If you are unable to submit online, further submissions on submissions 948 and 949 can be made by downloading and printing a further submission form from the NCC website, or forms can be collected from Council libraries and Customer Service Centre. Hardcopy further submissions may be hand delivered or couriered to Ground Floor, Civic House, 110 Trafalgar St, Nelson 7010 or emailed to environmental.planning@ncc.govt.nz.

Extension of a time limit under section 37(1)(a) of the Resource Management Act 1991

The Chief Executive of Nelson City Council, acting under delegated authority has extended the time period for the lodgement of further submissions on submissions 948 and 949, under section 37(1)(a) of the Resource Management Act. The time period for lodgement of further submissions on submissions 948 and 949 is extended from a maximum of 10 working days to 20 working days, closing 5:00pm Tuesday 9 April 2024.

Within five working days of a person or group making a further submission on submission 948 or 949, a copy of that further submission must be served on the person who made the original submission, in accordance with RMA legislation. Submission and contact details for the original submitters can be found online at shape.nelson.govt.nz/plan-change-29.

Mandy Bishop,
Group Manager Environmental Management
On behalf of Nelson City Council.