

Mayor Nick and Councillor Hodgson with tamariki from Tāhunanui Primary and their train drawings.

All aboard! Tāhunanui's new train is on track

A replacement train is on track to return to Tāhunanui but we need your help to choo-choo-choose what it might look like!

A replacement train is on track to return to Tāhunanui but we need your help to choo-choo-choose what it might look like!

Paul Milne, President of Nelson Host Lions, says a plan for a new, upgraded train is in the works, this time made of wood.

"The timber has been donated by Mitre 10 MEGA, and the Waimea Menz Shed will be building the train. So, what we do know is that it will be wooden, but we are looking to the children of Nelson to help us decide what the train will look like for future generations."

Design ideas can be made through shape.nelson.govt.nz. The ideas can be written and/or illustrated.

In early September 2023, the much-loved concrete train at the Tāhunanui playground, installed in 1964, suffered considerable damage, collapsing one of the carriages. While it is not known if the damage was intentional or accidental, the broken section of the train exposed pieces of its internal steel reinforcing, revealing it had rusted.

This type of internal structural failure cannot be repaired, and the remainder of the train was removed as it was no longer a safe piece of playground equipment for children to enjoy.

Members of the Nelson Host Lions Club, which helped to build the original train, have since been working on an idea for a suitable replacement, and are now ready to hear what the community thinks of their plans.

Tāhunanui Liaison Councillor Campbell Rollo welcomes the return of a new and improved train.

"I am thrilled that the Lions are committed to replacing the train. This is a hugely iconic playground that many generations of Nelson have a story to share with. This news continues that story.

"If I was going to submit a design, I would love to see a steering wheel so the kids can pretend to be the train driver, and a bit of colour, orange is my favourite."

Councillor James Hodgson and Nelson Mayor Nick Smith visited Tāhunanui Primary to chat with the tamariki about what they want the train to look like.

Mayor Nick and Councillor Hodgson say there was a clear trend from the kids on what they wanted to see.

"If I had to wrap it up in a sentence, I'd say multiple carriages, interactive components, and colour, lots of colour," Councillor Hodgson says.

"The kids put a lot of thought and creativity into the pictures, and many had very good explanations behind their pictures. There were some budding graphic designers and project managers in the group," Mayor Nick says.

As for potential colour, Mayor Nick and Councillor Hodgson can't agree. Councillor Hodgson likes blue and Mayor Nick is siding with Councillor Rollo and orange.

"It might need to be a train with multiple colours," laughs Mayor Nick.

"I'm nostalgic about the train returning to the Tāhunanui Beach playground. I, like so many families, played on it when I was a child and with my own children and look forward to further generations having this experience."

Installation of the new-look train is expected to take place in September. Prior to this, Council will be preparing the ground and installing a new concrete footing. The train's cost has been funded mainly by the Lions, but Council will contribute \$3000.



Bridge to Better

We can't promise a Bridge Street Canal but the street layout on Bridge Street will be changing.

While the changes we have in mind aren't quite this dramatic, Bridge to Better is an exciting opportunity to reimagine the streetscape and set the benchmark for future developments.

Now that a two-way street layout has been approved, we want to know: What does better look like to you?

Take a look at the proposed street layouts on Shape Nelson and tell us if there's anything you'd like to add or think we have missed.

shape.nelson.govt.nz/bridge-better

Feedback on this project is continuous so keep an eye out for further feedback opportunities as the design progresses.

Long Term Plan deliberations to get underway

Elected members begin deliberations on the Long Term Plan 2024-2034 (LTP) on Thursday 23 May, having received submissions from more than 1500 people and organisations.

Nelsonians were asked for feedback on eight key issues.

- Rates affordability;
- Buy-out of private properties affected by slips;
- Council's forestry approach;
- Marina CCO Proposal;
- Housing Reserve Fund changes;
- All-weather sports turf;
- Tāhunanui Beach Facilities;
- Arts Hub

Rates affordability

Approximately 1000 submitters commented on Rates Affordability with most backing Council's preferred option of medium service cuts and medium rates increases.

"Council's costs have increased just as they have for individuals given high inflation and interest rates," says Nelson Mayor Nick Smith.

"We've gone through every line of the LTP to see where we can make savings, but there is a certain service level that Nelsonians will expect us to provide. I think we've hit the right balance."

Property Buyouts

Council received more than 850 submissions regarding voluntary buy-out of private properties affected by slips in the August weather event.

A majority supported Council's preferred option of accepting Central Government's \$12.3m funding offer which includes up to \$6m to cover 50% of the total cost of purchase of private properties, with Council allocating up to \$6m to cover the other 50%. The offer was originally for up to 14 properties. Following a request by staff, Central Government has agreed in principle to revise the maximum number of properties to 17. The funding cap remains the same.

Council will also discuss Eligibility Buy-out Principles, which sit alongside the support package and set the methodology for determining eligibility and the content of offers. One of the principles consulted on stated that only residential properties and properties used as a primary place of residence would qualify. However, Councillors will debate whether to extend the Eligibility Buy-out Principles to include some assistance for residential rental properties.

"This was raised in several submissions," says Mayor Nick.

"We'll be deciding whether to amend the Eligibility Buy-out Principles so residential rental properties are included, but at a lower buy-out rate than primary homes of a maximum of 50% of their pre-August 2022 value for an insured home. The rate for an uninsured home would be a maximum of 40%."

"In total, Council, with the assistance of the central government package would purchase up to 17 residential properties affected by slips subject to an overall cap of \$12m."

Following deliberations, the Long Term Plan 2024-2034 will be adopted, and rates set, at a Council meeting on 27 June. The LTP will come into effect from 1 July 2024.

You can read the full story and all the submissions on the Nelson City Council website.

Quarantine Road footbridge

Work commenced this week on the installation of a footbridge connecting Quarantine Road and Trent Drive. The project is expected to be completed in late June.

Works include building out the kerbs, widening the footpath and installing a crossing point across Quarantine Road. When this is complete, the bridge will be lifted into place.

Stage One: 20 – 24 May

24/7 shoulder closure with a 30km speed reduction

Stage Two: 9 June – 14 June

8:00pm – 5:00am. Road closure from Pascoe Street to Bolt Road

If you're catching an evening flight at Nelson Airport, please add additional travel time.

Stage Three: TBC mid-to-late June

Stop/Go for 1-2 days, followed by a shoulder closure



Matariki special guest performer announced

New Zealand multi-award-winning Māori singer-songwriter Maisey Rika (Ngāti Awa, Te Arawa, Te Whānau a Apanui, Tūhoe) will be the special guest performer at this year's Matariki Festival, Te Huihui-o-Matariki 2024.

Hailing from the east coast of the North Island, Maisey's music is a vibrant mix of Māori, folk, acoustic, soul and easy listening.

Maisey began singing as a professional from a young age, recording several Māori albums before finishing her high school years. One of these albums even reached double platinum status here in Aotearoa New Zealand.

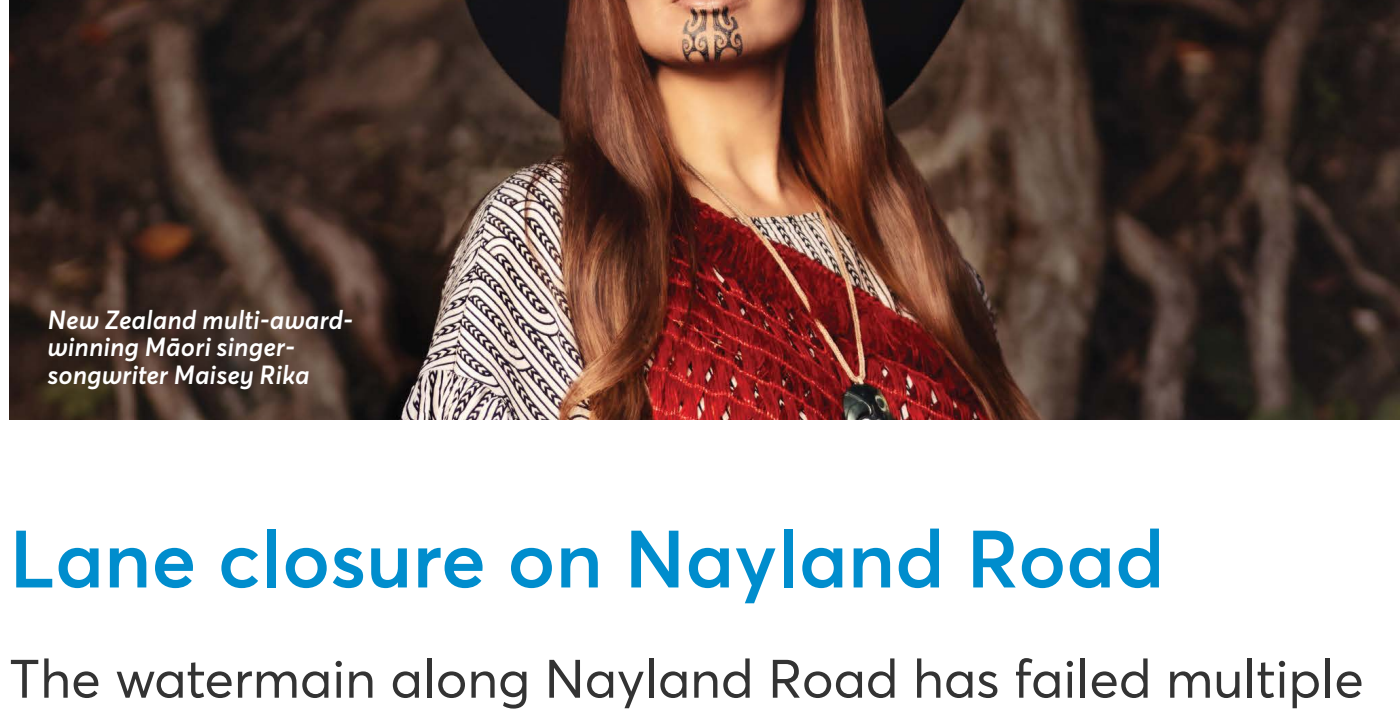
Since then, she's added another six original albums to her name, all of which have received accolades in the NZ Top 40 album charts and at music awards around the country.

Also set to perform at the festival is Te Kapa Haka o Kia Ngāwari.

The group was established in 1973 by Kia Ngāwari Amokura and Joe and Pirihiira Paul as a way to revitalise Te Reo Māori in Te Taihū o Te Waka-a-Māui / Top of the South Island.

With light art displays, a night market, and even more live entertainment, Matariki is set to be a fun night for the whole whānau.

Mark your calendars for Te Huihui-o-Matariki, Friday 28 June at Trafalgar Park from 5pm to 9pm.



Lane closure on Nayland Road

The watermain along Nayland Road has failed multiple times over the past two years and needs to be replaced.

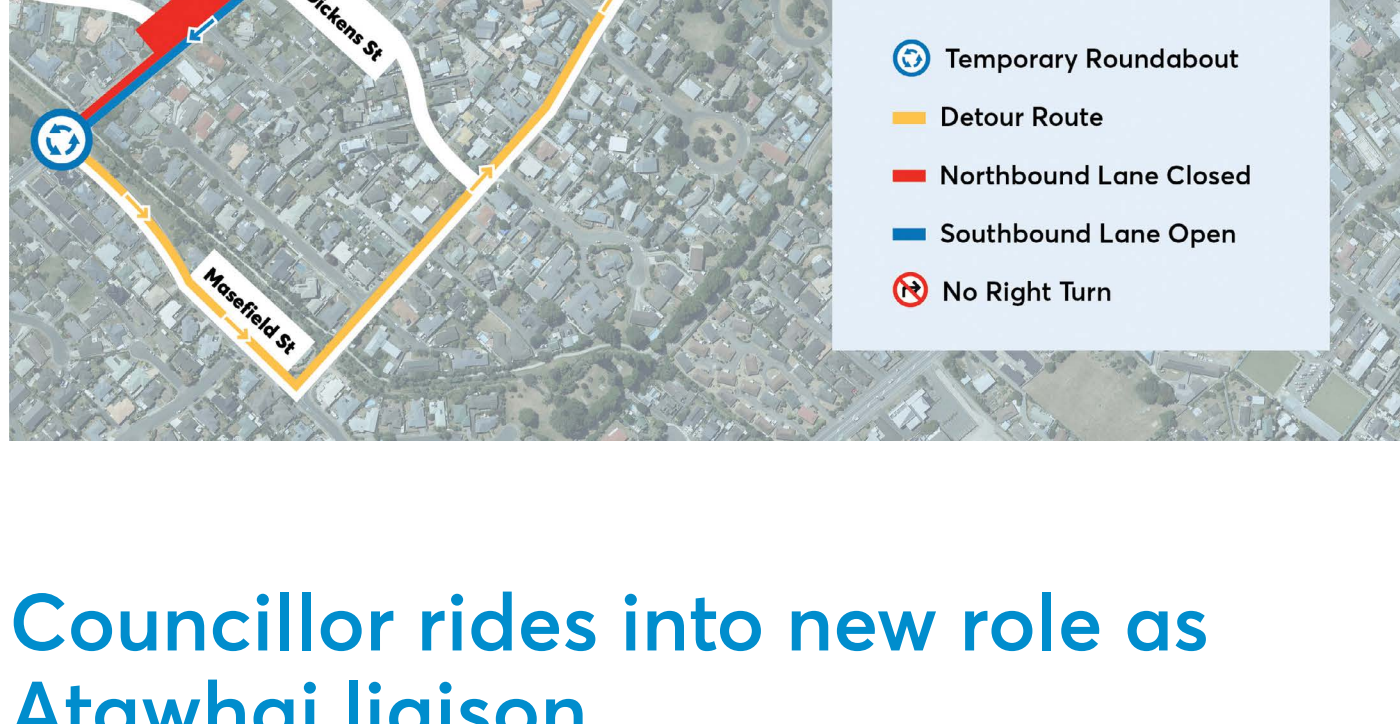
To ensure the project can be completed quickly and safely, Council will be closing the Northbound Lane on Nayland Road between Aldinga Avenue and Songer Street.

All northbound traffic will be detoured down Masefield Street, and along Marlowe Street from 27 May for 10 weeks.

We understand this work will be disruptive but replacing the old pipe will reduce the risk of costly future failures.

More details are at

shape.nelson.govt.nz or you can contact Council on 03 546 0200 or email projects@ncc.govt.nz



Councillor rides into new role as Atawhai liaison

Cycling alongside busy State Highway 6 with about 40 school children, on a tandem bike with Nelson Mayor Nick Smith, was Councillor James Hodgson's first act as the new Atawhai Liaison Councillor.

"I didn't always feel safe on the bike," laughs Councillor Hodgson. "However, the Mayor did a very good job navigating around all the kids and bikes."

The pair were joined by Councillor Rachel Sanson on the ride with Clifton Terrace School pupils last week as part of Nelson City Council's Travel Champions school travel challenge.

Catching a ride with the school's 'bike bus' was a perfect way for Councillor Hodgson to experience some of the challenges faced by those living and working in the Atawhai area.

The bike bus, organised by Emily Osborne, from Parents for Active Transport - Atawhai, usually gets about 15 pupils taking part every morning, while more children cycle the same route independently.

"The trek between Corder Park and Clifton Terrace School is quite challenging," Emily says. "The side roads are narrow, the cars are close and quick on the State Highway, visibility is minimised; it's not a safe area."

Mayor Nick introduced liaison councillors after being elected in 2022 to ensure better connections between Council's governance arm and the communities they serve. Councillor Hodgson joins Councillors Campbell Rollo (Tāhunanui) and Aaron Stallard (Nelson North) as a Liaison Councillor following feedback from Atawhai residents, who felt they too could benefit from having a councillor appointed to their area.

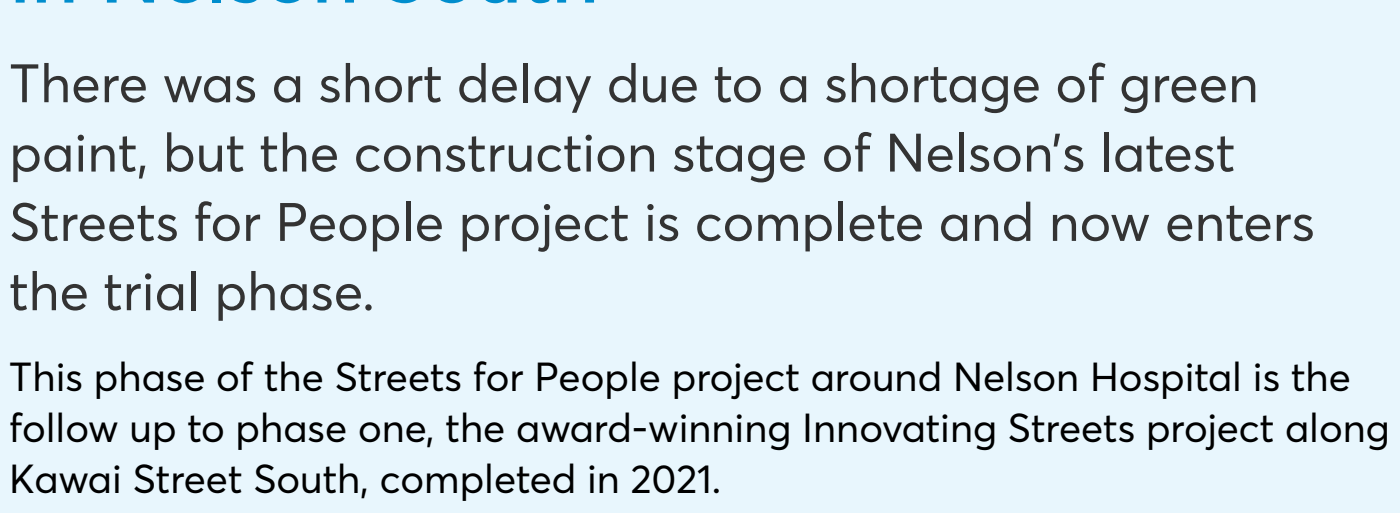
"I want to acknowledge that I don't live in Atawhai, but there is a responsibility we hold as Council for them to have representation," Councillor Hodgson says.

"Each community, including Atawhai, has its own distinct issues, needs and wants. This is an opportunity for me to get to know what they are and see where I can advocate for change."

What is at the top of his list? "The issue around State Highway 6 and cycling infrastructure is a clear need. It's also been pointed out to me that the coffee cart has become a gathering point for the community, something they would like to expand on. How can we create more of a social hub in Atawhai?"

Councillor Hodgson will be holding two drop in sessions a month for the Atawhai community. The last Monday of each month, 9:30 – 11am at Valley Coffee (the cart by Four Square on Atawhai Crescent). You can also meet with him on the second Wednesday of each month 10 – 11:30am at the Founders Cafe.

Atawhai residents can also contact Councillor Hodgson via phone, email or through his Facebook page. Councillor Hodgson's phone number is 022 064 8433 and his email address is james.hodgson@ncc.govt.nz. It is not an exclusive role and residents can contact any elected member. Find their contact details on the nelson.govt.nz website.



A network of safe streets for people in Nelson South

There was a short delay due to a shortage of green paint, but the construction stage of Nelson's latest Streets for People project is complete and now enters the trial phase.

This phase of the Streets for People project around Nelson Hospital is the follow up to phase one, the award-winning Innovating Streets project along Kawai Street South, completed in 2021.

This area of Nelson South was identified due to the high number of both drivers and active transport users and its proximity to schools. It was the first stage in creating a safer transport connection between the Railway Reserve and Waimea Road and successfully reduced speeds on roads including Kawai Street South, Tipahi Street South and Tukuka Street.

Residents in the Franklyn Street area, which has similar transport needs to the area around Kawai Street South, were introduced to phase two in December 2022.

Stage two, which focused on streets around the hospital between Motueka Street and Hampden Street, started with a series of on-street resident meetings, multiple letter drops, and a hospital staff survey. Contractor started the crossing work on Motueka Street 2024.

The result is a raised crossing on Motueka Street, raised tables on Tipahi Street and Franklyn Street, and speed cushions along Kawai Street. Multiple planter boxes and bollards have also been installed on these streets, and the shared pathway on Tipahi Street has been widened.

"Streets for People aims to make it safer and easier for people to use active modes of transport and improve the livability of streets for residents," explains Acting Group Manager Infrastructure David Light.

"Council highlighted several project aims including a reduction in vehicle speeds, a reduction in the volume of traffic, cleaner air, a safer network for active travel and a more 'people-focused' neighbourhood."

The treatments have now been in place for several weeks and have begun to have an effect.

The first round of monitoring post construction was completed in early May and showed an immediate drop in speed. Pre-construction data showed that only 25% of vehicles on these streets traveled 30kmh.

Post-construction data shows that 64% of vehicles on Kawai Street and 46% of vehicles on Franklyn Street are now travelling under 30kmh.

The internationally accepted speed to greatly reduce the chances of a pedestrian being killed or seriously injured if struck by a vehicle is 30kmh. The death risk for a person driving at 50kmh is 80%; this drops to 10% when driving at 30kmph.

There has also been an increase in active transport along Tipahi Street with an additional 86 people walking, cycling or scootering along the new shared pathway in the morning.

Motueka Street has had a major shift in vehicle volumes at peak times. The 8am pre-construction count recorded 535 vehicles using the street in an hour. Post-construction, this has dropped to 387 vehicles. During peak traffic between 4pm and 5pm, pre-construction data showed 862 vehicles using the street. Post construction, this had dropped to 730 vehicles.

Simon Duffy lives on Kawai Street and has seen the project from concept to completion.

"I'm proud Council for recognising the need to prioritise safety and taking action to address it," says Simon.

"The positive impact of these improvements to Kawai St is evident, as residents and visitors can now navigate the street with more confidence and peace of mind. I hope this commitment to Streets for People and similar efforts are implemented throughout the city to create a safer road network for all."

The ethos behind the Streets for People programme was to make it quicker and easier for councils to trial changes. It means that Council can take the time to get feedback from residents and to trial low-cost, temporary changes before making them permanent.

"As Council has moved through the project we have been able to make quick changes in response to feedback from residents," says David.

"For instance, Council changed the tree in one of the planter boxes as residents didn't want a tree that would grow to be too large. Residents on Franklyn Street had concerns about the placement of some cycle separators, which were relocated. Planter boxes on Hampden Street have also been relocated following comments from residents."

All changes will be temporary for at least 12 months. If the changes are successful, they will become permanent.

Streets for People is an NZTA Waka Kotahi funded project. The budget for Nelson South was \$1.4 million with Nelson City Council contributing \$140,000.

This project is tracking under budget.



It's time to renew your dog registration

All dogs who are (or will be) three months of age or more on 1 July 2024 must have a current registration. Registrations are due on 30 June 2024.

For more information on changes to dog registration fees from 1 July 2024, visit our dog ownership fees page at nelson.govt.nz.

Once registered, the registration is required to be renewed annually by 30 June. There is a grace period of up to one month, however failure to register your dog before 31 July will incur an infringement fine as well as late registration fee.

Dogs can be registered online. Please note that tags will be sent by post when you register online.



Tāhunanui planting day

Nelmac Kūmānu, together with the Nelson City Council, are excited to host a community planting event at Tāhunanui Beach on Saturday 8 June from 10am till 1pm (wet weather option Sunday 9 June).

Celebrating Arbor Day and World Environment Day (5 June) this is your chance to get involved by helping plant some native trees and shrubs as part of our Tāhunanui Dune Enhancement project.

You don't need any previous planting experience, just turn up in suitable footwear, bring a spade (if you have one) and get stuck in! Plenty of fun for the family!

*BBQ serving sausages and a coffee/hot chocolate will be provided for the first 100 volunteers!

Location: Meet at the grass area to the left of the beach volleyball courts (follow the signs to find us).

What to bring: Your own spade/gloves if you have them (some are available for use on the day) and sturdy shoes.

Tāhunanui Community Planting Day
 Saturday 8 June | 10am - 1pm
 Location: Grass area, left of beach volleyball

BRING THE WHĀNAU ALONG WITH YOUR SPADES AND GET STUCK IN!

Free BBQ & coffee*

nelmac kūmānu Nelson City Council

Rating Information Database available for public use

Council's Rating Information Database is available for inspection (without fee) at the Customer Service Centre in Civic House at 110 Trafalgar Street, Nelson during office hours (Monday, Tuesday, Thursday and Friday 8:30am to 5:00pm and Wednesday 9:00am to 5:00pm).

The database can also be accessed via Council's website. Simply look up our property rates search and then enter the property street address to view the current years rating information.

The public can also view the properties rating charges and information for the 2024/25 rating year.

The Rating Information Database contains a record of all information required for the setting and assessing of rates and informing ratepayers.

Buxton Square Toilets

New toilet Now open!
 6pm - 7am

Mayor's Message

I have spent a good part of this month advocating Nelson's case with Ministers. It matters a great deal as Government spends ten times as much as Council in our city.

Tasman Mayor Tim King, NRDA Chair Sarah-Jane Weir and I presented the Prime Minister with our joint councils' economic development plan for the region. It highlights major infrastructure challenges such as the redevelopment of Nelson Hospital, the Hope Bypass and flood protection upgrades as well as economic opportunities flowing from the Waimea dam, the Nelson Marina masterplan and open-ocean aquaculture.

Nelson did particularly poorly out of the \$3 billion Provincial Growth Fund under the previous Government. Our region has 5% of New Zealand's provincial population but we got only 1% of the fund. Northland got 10 times and the East Coast 15 times per capita as much as our region. My meetings with Regional Development Minister Shane Jones have been about securing a far better share of the \$1.2 billion Regional Infrastructure Fund. His enthusiasm for the blue economy is an opportunity for us.

The most important project for the region is the redevelopment of Nelson Hospital, which is well behind schedule. Earthquake strengthening of the two main tower blocks is required by November 2028. I was heartened when former Health Minister Andrew Little in January 2021 pledged "absolutely" that construction would begin by October 2023. This was not achieved and the only progress was funding for design work. It is critical for Nelson that real

work begins on addressing the acute bed shortage and seismic risks. I was reassured by the Prime Minister's knowledge of the problem and commitment to progressing this critical project.

Council has inherited a financial headache with the contaminated wood waste exposed by erosion at Tāhunanui Beach that must be removed. I've been lobbying Environment Minister Penny Simmonds for assistance so the full \$6 million cost does not fall on ratepayers. At my meeting with Conservation Minister Tama Potaka, I sought his support for the reintroduction of kiwi into Nelson's treasured Brook Waimārama Sanctuary. I have also been working with Emergency Management Minister Mark Mitchell on finalising the \$12.3 million support package for Council's storm recovery work.

The Government has a tough job with large deficits, high inflation and soaring debt it has inherited. We will need to be focused, diplomatic and realistic to ensure Nelson gets the investment and support we need.

Mayor Nick Smith



Toi Toi roundabout upgrade to improve pedestrian and cycle safety in Victory

Nelson City Council is upgrading the roundabout at the intersection of Toi Toi Street and St Vincent Street, installing four raised crossings.

Nelson Mayor Nick Smith says the roundabout has been identified as having a high crash rate and improving road design at accident black spots is a Council priority.

"This Victory roundabout is an accident black spot and heavily used by residents, commuters, children and cyclists travelling between central Nelson and the Railway Reserve. The new crossings will go a long way towards improving the safety of the roundabout. These measures have long been called for by the Victory community and I am pleased this project is getting underway."

The roundabout was identified in the NZTA Waka Kotahi safety programme as an area with a crash rate that needs to be addressed.

In the 10 years from 2012 to 2021, there were 26 crashes – two resulting in serious injury. Of these, eight involved cyclists and one pedestrian. Council was awarded funding of \$1 million for the project from NZTA and the criteria for the funding meant the timeline between awarding the tender and beginning the work was tight. That means the physical work is due to start next week.

KidsCrossing Nelson Whakatū Facebook page administrator Andrea Warn is a strong advocate for safe active travel in communities throughout Nelson.

"I advocated for six years for speed bumps to be installed on my street in the Brook following multiple accidents and some motorists travelling at high speed. In the three years since they've been installed there's been no accidents, and a drastic drop in speed.

This led Andrea to advocate for other Nelson communities. "For so many neighbourhoods it's not just speed that is an issue, but also the volume of traffic. Victory has many residents who don't drive, so their only form of transport is usually walking or cycling, and this area, specifically this roundabout, is just so unsafe to cross."

Pierre Hammond is a resident, a parent and a keen cyclist and has experienced firsthand how dangerous this roundabout is after being hit by a car.

"I don't use the roundabout anymore. I was incredibly lucky it was only a small vehicle that could stop quickly once the driver realised I was there, but it still knocked me off my bike and crushed my back wheel. I was wearing high vis, had lights on my bike and checked both ways, she just didn't see me."

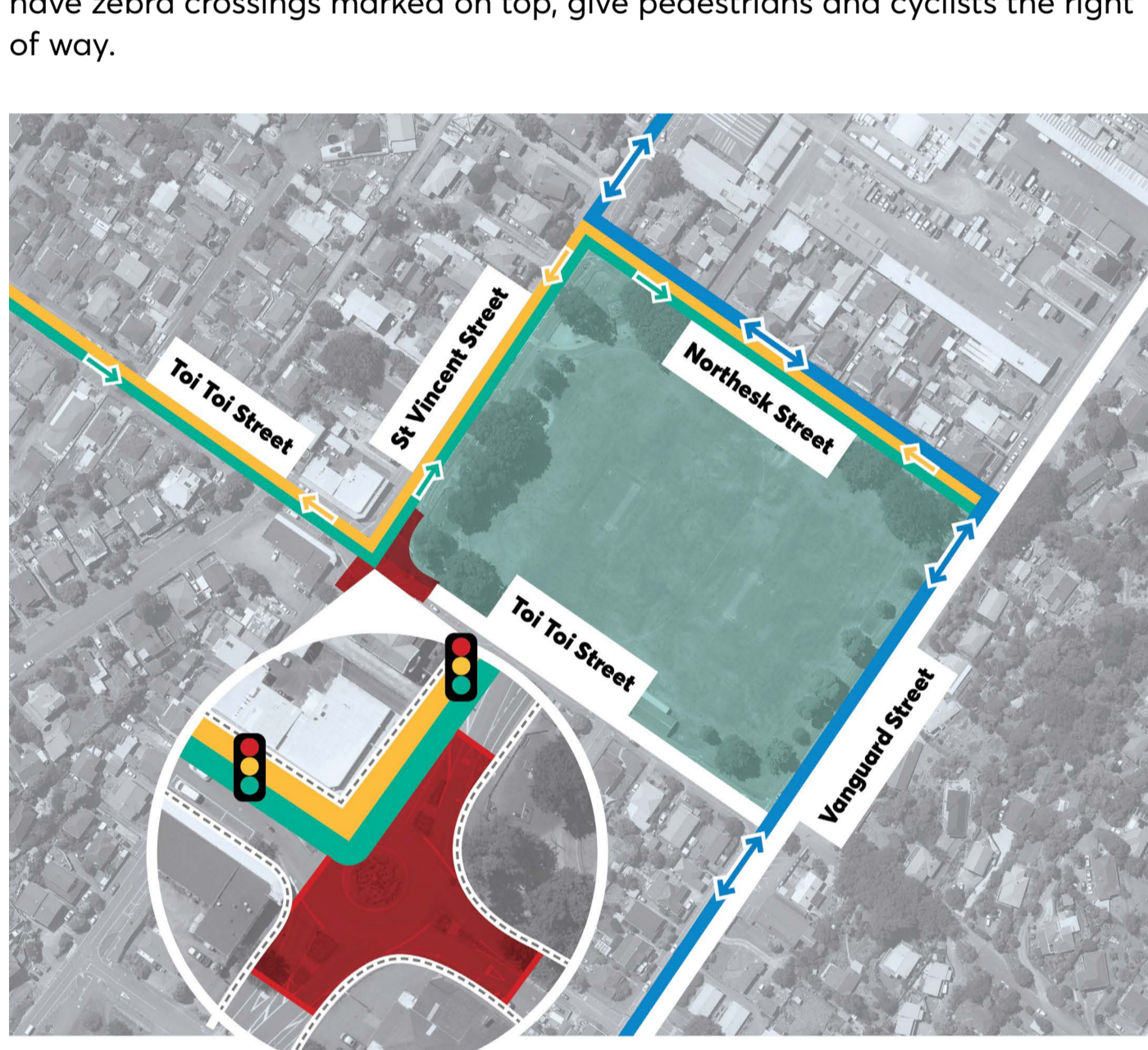
Pierre welcomes the changes to his neighbourhood. "It's a great opportunity to make this area a lot safer than it currently is. This is a change that will save lives."

Victory Primary School Tumuaki Dan George also welcomes the roundabout upgrades.

"As a community-centred school, we fully tautoko any initiative that helps keep our tamariki and community safe. Many of our children walk, bike, or scooter to kura and the new crossings will give them more confidence in doing so. It's a big thumbs-up from us and we're very grateful."

Acting Group Infrastructure Manager David Light says raised crossings were chosen for this project because they offer both pedestrian safety and traffic calming benefits.

"Raised crossings act as a physical reminder for drivers to slow down, and as they are also a pedestrian crossing. These raised platforms, which have zebra crossings marked on top, give pedestrians and cyclists the right of way.



— Detour out of Victory via Northesk St — Detour into Victory via Northesk St
— eBus Route 3 Detour — Road Closure ■ Footpaths Remain Open

Music Mix 2024

Nelson City Council, with Nelson Centre of Musical Arts and Multicultural Nelson Tasman, presents a series of fortnightly encounters with music and musicians.

Music Mix is a chance for people to discover the universe of music, from voices and strings to percussion and theatre.

These events are designed for people to explore music and opportunities to further pursue their interests.

Sessions are free to attend, and the audience is encouraged to sing, play music, and interact with the musicians.

Waimea College Mary Poppins (Musical Theatre)

Date: Saturday 25 May

Time: 11am to 12pm

Location: Pūtangitangi Greenmeadows Centre

Mary Poppins is coming to Nelson! Waimea College is very excited to bring you the long-awaited stage production of this iconic show from at the Theatre Royal from 26 to 29 June 2024.

Students have been working hard in the cast, as a dancer, playing in the orchestra, and behind the scenes, and this session will explore what it takes to put on a full stage production. Plus, students will perform a snippet from the show.

Lloyd Houghton (Banjo)

Date: Saturday 1 June

Time: 11am to 12pm

Location: Pūtangitangi Greenmeadows Centre

Lloyd has been playing banjo off and on for over 50 years. He started playing in the 3-finger bluegrass picking style. When he moved to Canada in 2012, Lloyd discovered old-time music, a precursor to country music. In this genre the banjo is played in a style known as clawhammer. He moved back to Nelson in 2019 and now plays with a small group of friends playing both traditional old-time tunes and his own compositions.

Joel Orchestra + Children's Concert + Kath Bee

Date: Sunday 9 June

Time: 4pm to 5pm

Location: Nelson Centre of Musical Arts (NCMA)

Come, see, and hear the beautiful sounds of an orchestra conducted by local, Joel Bolton. The Junior Youth and Greenhill Community orchestras are part of the NCMA's Orchestral Pathways programme. The groups welcome players of all ages to join an orchestra suited to their skill level and experience.

For this concert, the orchestras are joined by well-known children's songwriter and performer Kath Bee in a programme of popular contemporary and classical music aimed at the young and the young at heart.

Tessa Quayle (Vocalist - different genres)

Date: Saturday 15 June

Time: 11am to 12pm

Location: Pūtangitangi Greenmeadows Centre

Singer Tessa Quayle will walk you through different aspects of learning, performing and finding enjoyment in singing.

Tessa has been teaching and performing for many years. She has experience in jazz and improvisation and is currently teaching singing and violin at several schools in the Nelson region. She is also in an 8-piece soul band, a Bossa group, leads her own jazz band, occasionally performs with the Nelson Symphony Orchestra, sings at big festivals and events such as Opera in the Park, and is the Arts Coordinator at Nelson College.

At this session, Tessa will show you how to safely leave your comfort zone and try something new with singing.

Musseling in on the action

Seafloor mapping carried out by Nelson City Council scientists in the Wakapuaka and Horoirangi area has discovered multiple previously unknown horse mussel (Hururoa) beds.

The beds were discovered as part of fieldwork completed for "Mai i Whangamoa ki Horoirangi, mai i uta ki tai" (stretching from Whangamoa to Horoirangi, from the land to the sea), a collaborative project involving representatives from Nelson City Council, the Whānau of Wakapuaka 1B and Ngāti Tama ki Te Waipounamu, the Department of Conservation, Land Information NZ, National Institute for Water and Atmosphere, Fisheries NZ, and The Nature Conservancy.

Dr Harry Allard, coastal and marine scientist NCC, says horse mussels are an important but vulnerable habitat-forming species associated with diverse seafloor communities.

"The project aims to characterise the sea floor habitats in an area surrounding the Horoirangi Marine Reserve and neighbouring Wakapuaka Taiapure, expanding on multibeam mapping conducted by LINZ last year," says Dr Harry Allard.

This work involved taking samples at 80 different sites to analyse the sediment characteristics of the seafloor, baited underwater video at 112 sites to count the predatory fish species present, and live drop camera deployments to film the seafloor.

After a month on the water, the team of scientist have collated data and will use it to provide valuable insights into the preferred conditions and likely locations of key habitat-forming species, including sponges, mussels and macroalgae (seaweeds).

This will be essential for planned restoration work under the Kotahitanga mō te Taiao Alliance, and sustainable management of the area for future generations.

"This project has been a great opportunity for our Wakapuaka whānau to be part of a team collecting information for analysis around the state of seafloor within the Wakapuaka Taiapure boundary. As part of being able to provide these opportunities through such projects this has enabled strategic partnerships to be formed and education pathways towards higher recognition of learning" says Dayveen Stephens, Environmental Manager, Ngāti Tama Ki Te Waipounamu Trust.



Nelson Tasman Climate Action Festival

The Nelson Tasman Climate Action Festival is back for its third year, filling the week of 24 May to 2 June with an exciting line up of community-led climate action events.

The theme of Grounded Community set the tone this year. You'll see lots of invitations to gather around Papatūānuku and get your hands and knees dirty.

Nelson and Tasman will be among the first in Aotearoa to see the documentary Common Ground, a star-studded sequel to Kiss The Ground, the compelling 2020 film about regenerative agriculture and climate.

Go on to try a workshop about improving soil health, see composting in action, learn about worm farms, regenerative agriculture in Golden Bay and seed saving.

Many events are also being run by community groups to help our region take small steps towards a resilient and sustainable mindset.

The Sorooptimists are hosting a recycled fashion show with local college students. Nelson City Council is hosting breakfast for bicyclists at 1903 Square. Bikers young and old can also gather at Victory Community Centre to learn about bike repair and cargo bikes.

Our local Miyawaki forest is celebrating its 3rd birthday and you can participate in a led forest-bathing afternoon with the Maire Stream Guardians. NTS Nutrition is running a practical online workshop to help participants eat a healthy diet while reducing their food footprint.

The final Friday 31 May will be a time to celebrate, with a party at Melrose House.

Our community has delivered a packed schedule that covers the wide and wonderful gamut of sustainability in action. Make the most of this annual festival to dig in with your community.

For more information, the programme of events and to register, visit ntcf.nz/2024-climate-action-festival/

The Festival is supported by Nelson City Council and the Network Tasman Trust.



Saxton Field alcohol advertising/ reserves amendment consultation

Nelson City and Tasman District Councils are seeking public feedback on a proposed amendment to the Saxton Field Reserve Management Plan which will permit temporary alcohol advertising at international cricket matches held at Saxton Oval.

Under current rules of the Plan, 'advertising of alcohol shall not be permitted on Saxton Field, apart from price and product schedules at point of sale.' The proposed amendment allows for an exception to be made for international cricket matches with contractual sponsorship commitments.

This temporary advertising of alcohol will be permitted for the duration of the event, with the approval of the Saxton Field Committee Chair and the Chief Executives of both Councils.

The rule change will not apply to other sports or events held at venues within the Saxton Field complex.

At its April 2024 meeting, the Saxton Field Committee agreed to the proposed amendment. The matter will now go out for public feedback before the committee makes a recommendation that will be presented to the Joint Committee of Tasman District and Nelson City Councils on 9 July.

Consultation is open until Friday 24 May. For more information and to provide feedback, visit shape.tasman.govt.nz/saxton-plan-change.

Feedback is being collated through Tasman District Council.

PUBLIC NOTICE

Sister City public meeting

Council is looking for community volunteers to grow and foster international relationships on behalf of Nelson City.

Council sees the potential of a relationship with the US for opening up an exchange of ideas, cultures as well as trade and tourism links between the two cities.

Currently we have two options for US Sister Cities:

Eureka, California: Nelson has an inactive relationship with the city of Eureka in California. The three remaining members of the Eureka Association have resigned, so we need new volunteers with sufficient interest to help reinvigorate the Nelson-Eureka relationship.

Portsmouth, New Hampshire: Nelson has been approached by the city of Portsmouth to establish a sister city relationship. If there is strong interest from the community to set up a relationship, then this can be explored.

Nelson is lucky enough to have three active sister city relationships – two in China and one in Japan – visit nelson.govt.nz/council/council-structure/council-organisations-2/sister-and-friendly-cities for more information on these sister city links.

If you would like to find out more, a meeting is being held on 28 May 2024 - from 5pm to 7pm at the Prince Albert (113 Nile Street).

Please RSVP via Shape Nelson

shape.nelson.govt.nz/sister-city-public-meeting or phone

03 546 0200 or email enquiry@ncc.govt.nz.

Councillor's Comment

I am halfway through my fourth term and still feel very blessed, as I did on first day as a councillor 11 years ago, to be at the Council table representing our community.

In many ways I feel it has come full circle as we deliberate on the financially challenging Long Term Plan this week. This is the reason I originally stood for Council – passionate concern for the financial challenges many hard-working Nelson families, young and old, face in keeping a warm roof over their heads.

This LTP, titled 'Beyond the Storm', for me is also a metaphor for the economic storm we are in – a struggle many individuals and businesses find themselves in. For many, mortgage rates are hitting hard, as are rental prices as a proportion of income.

Council rates for some are now threefold what they were in my first term. Then add the anxiety of what the next supermarket docket will be. How can the already stretched and limited ratepayer base be asked to dig deeper into already committed pockets?

Do we make the tough priority choices and reduce our growing council shopping list, at least until NZ has weathered this economic storm? I say we do. Or do we believe we can spend and borrow our way out of it, to indebt or limit future generations' options? This is a tool that needs to be used with greater constraint, in my view, with an understanding that debt needs to be serviced and then reduced when the sun shines again.

Prior generations had financial challenges and greater periods of hardship.

But something that stands out

to me is that for those generations, it brought them closer together in unity, stoicism, selflessness, compassion and teamwork.

It concerns me greatly that we are distracted by division, blame and anger on global issues in response to our perceived own challenges, rather than empathy and support. Energy should be directed at unifying and protecting our community not dividing it. Our focus should be on improving our region's productivity, social wellbeing and supporting each other's endeavours.

I want our community to continue to look out for the vulnerable, build bridges rather than barriers, and forge ahead unified, as prior generations did for us.

I hope Council endeavours to do our part during difficult decisions this week that determine the next 10 years' rates budget and direction, to benefit our community, enabling following generations to also flourish.



Councillor Tim Skinner

Rock the City is back!

Nelson's long-running youth music concert is returning to the Theatre Royal, Friday 31 May.

Supported by Nelson Youth Council, Rock the City is a non-competitive band showcase that is all about supporting our talented young musicians and giving them the opportunity to play in a professional environment to an audience of their peers.

Each artist will perform 2 - 3 songs for a supportive and enthusiastic crowd.

With multiple bands on the bill, there will be music from indie rock to acoustic ballads and everything in between.

So, bring your friends and whānau and get ready to be blown away by the talent on display. This is a night you won't want to miss!

Lineup: Shed Heads, Solace, Imperfect Circles, Lobotomy Stare, Tizzy, KC, Finesse

ROCK THE CITY

Nelson City Council
Te Kaunihera o Whakatū

ncma | nelson centre of musical arts

putting young people centre stage

FRIDAY 31 MAY 6:00-8:30PM

THEATRE ROYAL

TIX \$9.80 AT THEATREROYALNELSON.CO.NZ

MEETINGS

Council meeting - to deliberate on submissions to draft Long Term Plan 2024-2034 9am each day	23 and 24 May
Regional Pest Management Joint Committee - to hear submissions to Partial Review of Regional Pest Management Plan 2019-2029 (if required) - Tasman District Council Chamber, 189 Queen Street, Richmond 9.30am	27 May
Chief Executive Employment Committee - Mayor's Office, Floor 2A, Civic House, 110 Trafalgar Street, Nelson 1pm	29 May
Audit, Risk and Finance Committee 9am	5 Jun
Council meeting 9am	6 Jun
Saxton Field Hearings Panel - to hear submissions to Amendment to Saxton Field Reserve Management Plan to accommodate alcohol advertising at Saxton Field 9.30am	7 Jun
Hearing Panel 9am	13 Jun
Saxton Field Hearings Panel - to deliberate on submissions to Amendment to Saxton Field Reserve Management Plan to accommodate alcohol advertising at Saxton Field 9.30am	14 Jun
Regional Pest Management Joint Committee - to deliberate on submissions to Partial Review of Regional Pest Management Plan 2019-2029 - Tasman District Council Chamber, 189 Queen Street, Richmond 9.30am	18 Jun
Council meeting 9am	27 Jun

For a full list of meetings go to:

nelson.govt.nz/meetings



To read the latest updates or sign up for Our Nelson by email go to:

our.nelson.govt.nz



Maitai Dam Aeration

Likely end date: May – Nov 2024

Location: Maitai Dam

Benefit: Improve water quality

NRSBU Rising Main Duplication

Likely end date: Section 5 – 7

Location: Section 5 in businesses property starts in May 2024

Kotua place stoke / businesses property

Benefit: Improve network capacity and resilience

Tahuna Hills Stormwater Upgrade – Catchment 3

Likely end date: Jan to May 24

Location: Grenville Terrace, Days Track and Moncrief Ave

Benefit: Stormwater upgrade and geotechnical risk mitigation

Cable Bay Road Slip Repairs

Likely end date: Feb 2024 – June 2024. Road Closures as required between 9am-12pm and 1pm -3pm. Notifications by Community group txt from contractor with road closure dates for the week ahead.

Location: Cable Bay Road 6km towards beach

Benefit: To repair the Cable Bay Road damaged in the Aug 22 storm.

Slip 2 – 131/233 Brook Street Slip Remediation

Likely end date: March – June 2024

Location: Brook Street at Coppermine Trail start near Blick Terrace

Benefit: Property protection

41 Halifax Street – Public Car Parking

Likely end date: April – June 2024

Location: 41 Halifax Street

Benefit: Public Car Parking

Saltwater Creek Footbridge Replacement – Trafalgar Centre Footbridge

Likely end date: 20 May – June 2024

Location: Footbridge from Trafalgar Centre to Haven Rd

Benefit: Continue this service, old bridge is structurally end of life. Add iwi art to enhance cultural significance

City to Maitai Hub Track Upgrade - Sunday Hole Boardwalk

Likely end date: 15 April – June 2024

Location: Sunday Hole swimming area of the Maitai river on Maitai valley Road

Benefit: Improvement to the walking/cycle track around Sunday Hole on the true left side of the river

Maitai Road Slip Repairs

Likely end date: Mar 2024 – Jul 2024

Location: Maitai Road at Nile Street Intersection

Benefit: Repair edge of road after August 2022 Event

Marsden Valley Trail Head Carpark

Likely end date: April 2024 – June 2024

Location: Top of Marsden Valley Road

Benefit: New carpark for users of Barnicoat Range

Glen Creek Culvert Upgrade

Likely end date: April 2024 – June 2024

Location: Brook St and Glen Greek (top end of road)

Benefit: Upgrade Culvert and repair the road back to two lanes after August 2022 Event

Quarantine Road Shared Path Bridge

Likely end date: 20 May – 30 June 2024

Location: Quarantine Road – Next to the existing Road Bridge over Jenkins Creek

Benefit: Improved pedestrian and cycling facilities

Nayland Road Watermain Upgrade

Likely end date: 27 May – August 2024 TBC

Location: Nayland Road – 137 Aldinga Avenue to Songer Street

Benefit: Watermain Renewal

Maitai Flood Management

Likely end date: March 2024 – June 2024

Location: Stormwater Backflow Prevention for 227 & 231B Nile Street and Level Sensors Installation for 15 locations around Nelson Central Business District

Benefit: Flood mitigation

Cawthron Crescent Stormwater Upgrade

Likely end date: May – July 2024

Location: Cawthron Crescent, Properties # 13 to 29

Benefit: Improve stormwater management during rainfall events

Intersection Safety Improvement

Likely end date: May-2024

Location: St Vincent-Toi Toi Intersection

Benefit: Safety Improvement

Saxton Field

U13/U15/U18 Hockey Development Program II – Thursday 2 – Thursday 30 May, 4pm – 8:30pm
Top of the South Club Hockey Tournament – Saturday 8 – Sunday 9 June, 8am – 8pm
Nelson Hockey Junior Program II – Thursday 16 May – Thursday 20 June, 3:45pm – 6:30pm

Trafalgar Centre

NBS Nelson Giants vs Hawke's Bay Hawks – Thursday 30 May, 7:30pm
Cancer Society Diamond Gala – Saturday 8 June, 6pm – 11:45pm
NBS Nelson Giants vs Canterbury Rams – Thursday 13 June, 7:30pm
Showquest – Monday 17 June, 7pm

Founders Heritage Park

Hours: 10am – 4:30pm Daily
Founders Annual Book Fair – Saturday 1 – Sunday 9 June, 10am – 4:30pm
Stoke Memorial Hall – Temporarily Closed

Trafalgar Street Hall

Ceol Aneas Set Dancing – Saturday 1 & Sunday 2 June, 3pm – 5pm
Ceol Aneas Community Céilí – Saturday 1 June, 7pm – 9:30pm

Trafalgar Street

Heave for Hospice – Friday 31 May, 4pm

Melrose House

Hours: Monday: 9am – 3pm, Tuesday to Sunday: 9am – 4pm, closed public holidays

Isel House and Park

Winter Hours: Closed from 1 May – 30 September

Pūtangitangi Greenmeadows Community Centre

Repair with Flair – Saturday 25 May, 11:30am – 3:30pm
Music Mix: Mary Poppins – Saturday 25 May, 11am
Music Mix: Banjo? Banjo! – Saturday 1 June, 11am
Perform with Tessa Quayle – Saturday 15 June, 11am
Girls Day Out – Sunday 16 June, 3pm

Nelson Public Libraries:

Elma Turner Library

Hours: Monday, Tuesday, Thursday, Friday: 9:30am – 6pm
Wednesday: 10am – 6pm
Saturday: 10am – 4pm
Sunday: 1pm – 4pm
Small Time – Wednesdays, 10:30am – 11am
Rising Scientist – Wednesdays, 10:30am – 11am
NZ Music Month: Tessa Quayle – Saturday 25 May, 12:30pm
NZ Music Month: Imani-J – Sunday 26 May, 2pm
Teen Takeover – Wednesday 29 May, 3:30pm – 5pm
Sunshine Noir: Nelson Mystery in the Library – Saturday 1 June, 2pm
Kōrero te reo Māori – Saturday 1 & 15 June, 10am – 11am
Ruru the Therapy Dog – Saturday 8 June, 1pm – 2pm
Dr James Butler: Transformation Pathways for Pacific Islands and Their Food – Sunday 9 June, 2pm – 3:30pm

Nightingale Library Memorial

Hours: Monday – Friday: 12pm – 4pm
Saturday: Closed
Sunday: 1pm – 4pm
Inner Guidance Connections – Sunday 26 May, 3pm – 4pm
Nellie Knitters – 29 May and 5, 12 & 17 June, 1pm – 4pm

Stoke Library

Hours: Monday, Tuesday, Thursday, Friday: 9:30am – 5:30pm
Wednesday: 10:00am – 5:30pm
Saturday: 10am – 1pm
Sunday: Closed
Odie the Therapy Dog – Wednesdays, 3:15pm – 4:15pm
Crafty Creators – Wednesdays, 3:30pm – 4:30pm
Small Time – Fridays, 10:30am – 11am

Museums and Galleries:

Broadgreen House and Samuels Rose Gardens

Winter hours 1 May to 30 September: 12pm – 3pm Daily
Fatal Fashion: Dangerous Dress and Injurious Attire – Wednesday 3 April – Sunday 1 December, 12pm – 3pm
Twill Felt Flower Workshop – Sunday 2 June, 10am – 4pm
Creative Bookbinding – Saturday 8 – Sunday 9 June, 10am – 4pm
Fatal Fashion Exhibition Curator's Floor Talk – Wednesday 12 June, 3pm

The Suter Art Gallery & Theatre

Hours: 9:30am – 4:30pm Daily
Nelson Decorative and Fine Arts Society – Wednesday 22 May, 6:30pm
Pigments, Pots and Pearls – Monday 27 May – Sunday 16 June, during opening hours
Togs, Togs, Undies – The Morphing World of AI & You – Sunday 9 June, 7pm – 9pm
Nelson Adventure Film Night – Saturday 15 June, 6pm
Exhibition: Footfalls – Monday 17 June – Sunday 7 July, during opening hours

Refinery ArtSpace

Hours: Monday – Friday from 10am – 5pm, Saturday from 10am – 2pm
Professional Weavers Network Talk – Wednesday 22 May, 11am
Exhibition: Cross Country Weavers 50th Anniversary – Friday 17 May to Friday 14 June, during opening hours
Changing Threads Contemporary NZ Textile Fibre Art Awards – Friday 17 May to Saturday 15 June, during opening hours
Workshop: Stretch Your Textile, Ready For Its Next Life – Tuesday 21 May, 9:30am – 4pm
Hamuera Manihera: An Artist Talk – Sunday 26 May, 11am
An Itch to Stitch with Stef Naldi – Sunday 26 May, 10:30am – 1pm
Artist Talk: into The Wild – Sunday 26 May, 2pm
Bonds Beyond Borders Global Stitch Up Collective – Wednesday 29 May, 5pm
Stitch Bloom Project – Saturday 8 – Sunday 9 June, 11am – 3pm

Nelson Provincial Museum

Hours: Weekdays from 10am – 5pm, Weekends & Public Holidays from 10am – 4:30pm