

Tō Tātou Whakatū Our Nelson



Wakatū Incorporation board member and director Miriana Stephens, Commercial Development Manager at Cawthron Eric Swale, and environmental lawyer Sally Gepp KC.

Brave souls with ingenious ideas to help businesses reduce their greenhouse gas emissions are invited to take part in Nelson City Council's Dragons' Den – Climate Change edition event and potentially win funding from Council's Climate Change Business Grants.

With a total funding pool of \$25,000 on offer, Council is looking for businesses who want to pitch their climate change initiative to our three dragons; Wakatū Incorporation board member and director Miriana Stephens, Commercial Development Manager at Cawthron Eric Swale, and environmental lawyer Sally Gepp KC.

Chair of Council's Climate Change Taskforce Aaron Stallard says the dragons will make a formidable team.

"There's years of experience and gallons of expertise between our three dragons, who will all bring a unique perspective to the event. If you have a business idea that will help to reduce greenhouse gas emissions, that also has a social or community component, in Nelson, I strongly encourage you to step forward and apply," he says.

"I would love to see ideas that focus on the areas responsible for most of our greenhouse gases as these are the areas where innovation can have the biggest impact. Transport is the number one producer of emissions in our region, followed by stationary energy (that's things like heating and lighting of our buildings). Projects that involve the agricultural sector would also be an area of interest as emissions from this industry have the biggest impact on a national level."

The Dragons' Den event will be filmed in front of a live audience at the Boathouse in Tahunanui on 19 March.

MC for the night Deputy Mayor Rohan O'Neill-Stevens says he's prepared to make sure applicants can face the dragons without fear.

"If you're applying you will get some time with Council staff to help prepare your pitch. You will be presenting in front of a friendly audience of people who want to see you do well. Our Dragons will no doubt ask some searching questions but you're not going to be facing Smaug.

"The \$25,000 fund could be awarded to one idea or it could be split in some way on the night."

Applications to the fund open on February 3, and businesses must complete and submit an online form to take part. Successful applications must meet the criteria for the fund, the most important being that it focuses on reducing greenhouse gas emissions. All relevant details can be found at nelson.govt.nz/climate-change



Funding will be provided to the winning applications following the Dragons' Den event. Winners will then have 12 months to complete their projects using the allocated funding.

At the end of the 12-month period, winning applicants will be required to submit a report detailing how the funds were spent, as well as the impact your project has made in reducing emissions.

Businesses wishing to talk with Council staff before making an application should email climatechangeteam@ncc.govt.nz.

Business solutions for climate change action.



Waitangi Day

Local Waitangi Day 2025 commemorations will be hosted in collaboration between iwi, Whakatū Marae and Council.

The day will begin with a pōwhiri at 9.00am hosted by Ngāti Rārua and other iwi of Te Taihu o Te Waka-a-Māui. The pōwhiri is an opportunity for the community to be welcomed onto Whakatū Marae by iwi and learn more about its history. Guests are asked to gather at the waha roa (gateway) and entrance to the marae grounds. After the pōwhiri there will be a variety of activities at the marae.

The annual International Kai Festival will commence at 10am at Founders Heritage Park selling a variety of kai and refreshments, as well as arts & crafts.

There will be a variety of cultural entertainment at this year's event featuring local performing groups Ngā Aho Rau, Te Kura Kaupapa Māori o Tuia Te Matangi, Te Kuru Marutea, guest performer Ruia and more.

Head along to Waitangi Day 2025 to learn more about our shared history and experience Te Ao Māori / Māori culture.

Thursday 6 February 2025 9am – 3pm
Whakatū Marae and Founders Heritage Park
Entry to the event is with a gold coin koha

New Zealand

Sotheby's

INTERNATIONAL REALTY

NELSON Opera IN THE PARK

SATURDAY 15 FEBRUARY

TRAFALGAR PARK, NELSON

Tickets from [eventfinda.co.nz](https://www.eventfinda.co.nz)

Whakatu- Nelson's iconic New Zealand Sotheby's International Realty Nelson Opera in the Park returns in February 2025, marking its 20th anniversary.

A stellar evening featuring top New Zealand opera and contemporary talent performing alongside the Christchurch Symphony Orchestra, the event promises an unforgettable night of music under the stars at Trafalgar Park.

Headlining the opera acts are internationally acclaimed soprano Emma Pearson (former principal artist at Germany's Hessisches Staatstheater), and tenor Emmanuel Fonoti-Fuimaono, finalist in the 2022 Lexus Song Competition and winner of the 2023 Handa Australian Singing Competition. Joining them is local favourite Tessa Quayle, all accompanied by the Christchurch Symphony Orchestra (CSO) under the baton of David Kay.

On the contemporary front, fresh from touring together, are four of Aotearoa's singing royalty: Hall of Fame's Annie Crummer (Netherworld Dancing Toys, When the Cats Away); soul and R&B star Deva Mahal (daughter of American blues musician Taj Mahal); Betty-Anne (co-founder and lead singer of Ardijah); and jazz queen Naomi Ferguson (The Music is Bond).

Artistic Director Pete Rainey has put together every one of the opera programmes and this one has some of his favourites, "The first half of the show will include the stunning Festive Overture composed by Dmitri Shostakovich plus two absolute stunners from Puccini's La Bohème: the famous aria Si, mi Chiamano Mimi and the beautiful and romantic duet O soave fanciulla – probably my most loved pieces of opera ever.

"Emmanuel will also perform two classic tenor songs – Dein ist mein ganzes Herz and the ever popular O Sole Mio."

The contemporary second half of the night features timeless anthems of legendary divas, such as Simply the Best, I Feel the Earth Move, and R.E.S.P.E.C.T., accompanied by the rich, full sound of CSO, led by conductor Tom Rainey.

The evening finishes on a sparkling note with a spectacular fireworks display during the final piece.

Tickets are on sale now via [eventfinda.co.nz](https://www.eventfinda.co.nz) and the Nelson City Council Customer Service Centre. For performance updates visit the 'Nelson City Presents' Facebook page.



For everyone's enjoyment...

Arrive early

Gates open from 5pm. Pre-show community entertainment from 5.30pm (Midnight Swim then NBS Nelson City Brass).

Karakia/welcome at 7.15pm. Please ensure you are seated no later than 7.15pm for the 7.30pm show commencement.

Concert finishes at 10pm with a fireworks display.

Seating

There are areas for low chairs and rugs, separate from higher chairs. Please follow the instructions of our ushers and comply with this arrangement so everyone can enjoy the show. Scan the QR code below to see a site map showing the seating arrangement.

To minimise damage to the playing field, please bring chairs with rounded bases rather than individual legs.

Refreshments

You can bring your own picnic and refreshments. Glass bottles are allowed but please bring only plastic or paper cups to drink from as we need to avoid broken glass on the field. There will be food stalls and non-alcoholic drinks for sale on site.

Pack it in, pack it out

We are working towards zero waste and encourage you to bring your own crockery and utensils. Please use our compost bins and take all non-compostable rubbish away with you.

Smoking

This is a no-smoking and no-vaping venue and event.

Travel via eBus

Normal Saturday eBus services will be operating to transport people to the event. Additional buses will be operating to get people home, picking up passengers from outside the venue, on Trafalgar Street.

- 10.15pm departure, Route 1 (Richmond via Waimea Road)
- 10.15pm departure, Route 2 (Richmond via Rocks Road)

Tickets are \$5 per person and must be purchased in advance via www.eventfinda.co.nz.

Parking

The Trafalgar Centre carpark will be open. There will also be dedicated carparking for electric vehicles at Millers Acre carpark.



For more information and a site map, visit [summerevents.nz](https://www.summerevents.nz)

This is a carbon neutral event.



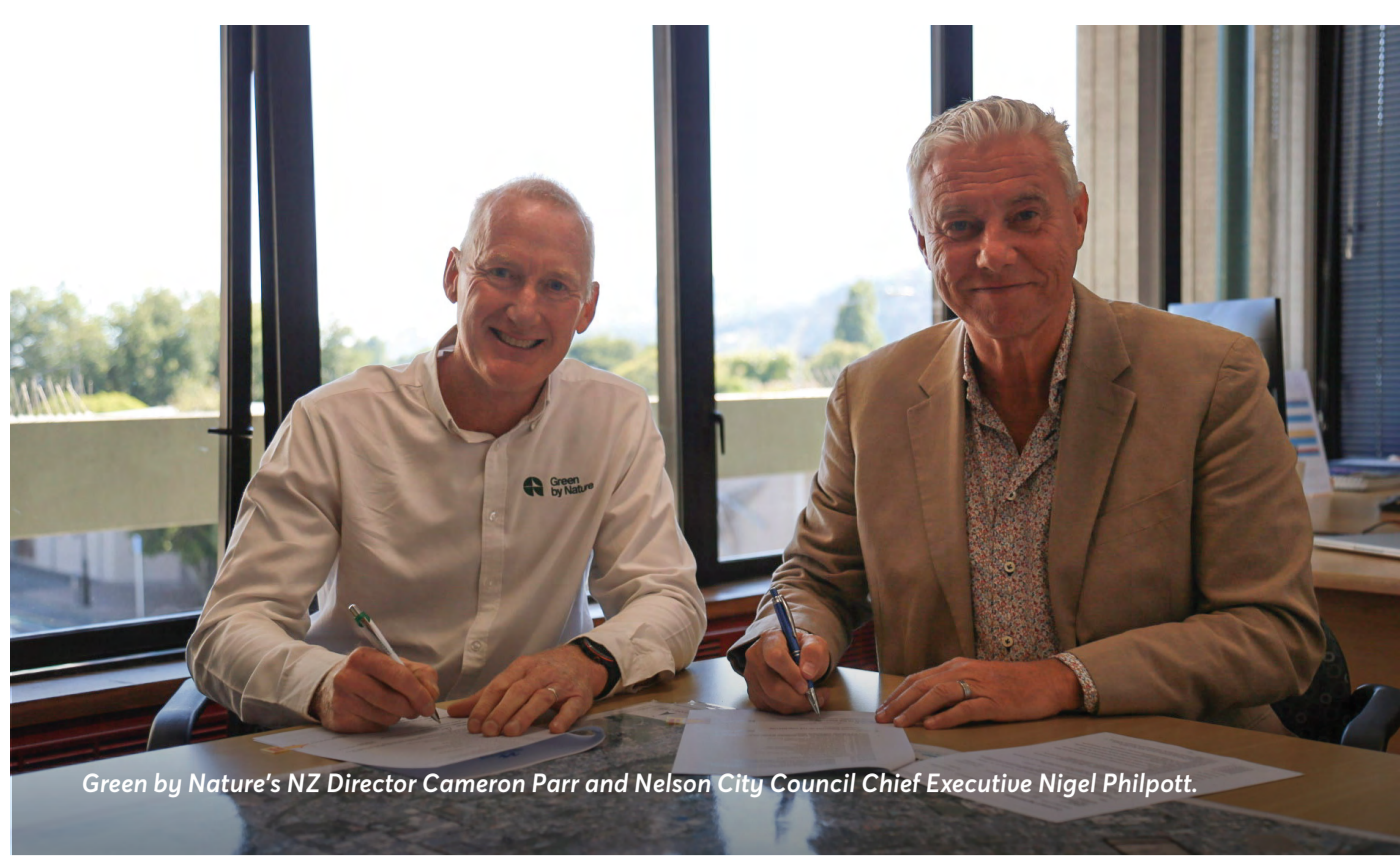
Matthews
EYECARE

Kuske
UNAPOLOGETIC EYEWEAR

Digitella

Nelson
City Council

Te Kaunihera o
Whakatū



Green by Nature's NZ Director Cameron Parr and Nelson City Council Chief Executive Nigel Philpott.

Green by Nature awarded open spaces contract

Green spaces service company Green by Nature has been selected to manage Council's parks, reserves and open space assets following a comprehensive procurement process.

The new contract covers the maintenance of a wide range of services including public gardens, neighbourhood parks, street gardens, trees, hanging baskets, sport fields, cemetery and crematorium services, playgrounds and esplanade and foreshore reserves.

Chief Executive Nigel Philpott says Green by Nature's tender was impressive.

"It's my priority to make sure contracts deliver the best possible value for money to ratepayers and we achieve this through a competitive tender process. Green by Nature's proposal emphasised value-for-money, high-quality service, a commitment to horticulture through their trainee program and minimising environmental impact.

"Their plans to support staff as the contract hands over from Nelmac and their commitment to local engagement lines up with Council's goals for our community. We have specifically included measures to support affected staff on the initiative of elected members. The requirement is for Green by Nature to consider affected Nelmac staff for employment, and they have already begun this process by meeting with them last week."

Group Manager Community Services Andrew White says Green by Nature has proven abilities in the industry, maintaining some of the country's most prestigious green spaces including Hastings and Queenstown Lakes District Councils.

"Nelson residents will benefit from their innovative approach including smart irrigation systems that adjust water usage based on real-time weather data and drone technology for accurate site surveys and vegetation monitoring, along with access to turf, horticulture and arboriculture specialists around the country.

"Council thanks Nelmac for maintaining Nelson's parks and reserves for many years. Nelmac continues to be an important contract provider to Council for other services."

NZ Director Cameron Parr says Green by Nature is honoured to be the chosen contractor for maintaining Nelson's green spaces, premier sports facilities, and renowned public gardens.

"We are humbled and proud to work alongside Nelson City Council in caring for these vital community assets. Our team brings together dedicated horticultural specialists, skilled arborists, and sports turf experts who understand the diverse requirements of Nelson's outstanding green spaces."

Water done well

The Proposal

As part of developing a Water Services Delivery Plan under the Local Government Act 2024, Nelson City Council is required make a decision about how it will deliver water services to the community. Council is seeking community views on whether Council should remain with the existing approach for delivering water services.

The Explanation

Council currently owns, operates and maintains the majority of the three water networks within the city. The day-to-day operation and maintenance of the drinking water, storm water and wastewater networks is carried out by various contractors. Council considers that the existing approach for delivering water services has served the city well in the past and will continue to do so into the future.

Model A (Recommended)

Retain the existing approach for delivering water services:

Advantages

- Simplicity and economic efficiency
- Structure already in place
- Nelson City utilities in good shape

Disadvantages

- Borrowing capacity limited.

Model B

Establish, join, or amend a water services council-controlled organisation (WSCCO):

Advantages

- 'Arms-length' approach that could allow decision making focused on water service outcomes
- Ability to access higher levels of borrowing

Disadvantages

- Substantial unknowns.
- No ability to join or amend existing WSCCO
- Cost of establishing & ongoing funding
- May increase costs to Nelson to support other Councils.

Model C

Establish, join, or amend a joint local government arrangement under the Local Government Act 2002:

Advantages

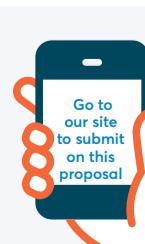
- Share costs of service delivery

Disadvantages

- Substantial unknowns.
- Cost of establishing and ongoing funding
- Some dilution of control.
- May increase costs to Nelson to support other Councils.

Submissions open 10 Jan – 24 Feb.

shape.nelson.govt.nz/local-water-done-well



Mayor's Message

The big challenge for Nelson this year is economic recovery. Our households and businesses struggled last year as evidenced by Nelson rating bottom of 16 regions in the ASB Regional Economic Scoreboard.

Council's top priority over the past two years has rightly been the massive \$90 million repair job from the August '22 storm. The critical repairs are now done, enabling us to shift our focus to city revitalisation.

The economy will improve this year with inflation back under control and interest rates dropping. Council can play an important role by investing in infrastructure to support growth, attracting private investment to the city, supporting tourism and events that bring people to Nelson and keeping our own costs and rate rises under control.

Work will start this year on the massive Bridge to Better project with the upgrade of water infrastructure in adjacent areas such as Halifax Street. It's about replacing old, undersized pipes to support new development and stopping Wakatu Square carpark regularly flooding.

This work will be co-ordinated with constructing the new bus interchange at Millers Acre. Council wants to leverage new development for the city on sites it owns. I am optimistic about the proposals we have received for our sites on Rutherford, Bridge and Halifax streets.

It is my ambition for Nelson to

make more of our links to the sea. The installation of the new 550-tonne travel lift this year at Port Nelson will enable an expansion of our heavy marine engineering. Council is also upgrading Nelson Marina's capacity for repair work with a new 110-tonne travel lift arriving midyear and increasing the boat repair yard from eight to 23 berths.

We will be upgrading the cycle and walkways to the Marina and Port. Council now owns all 10 parcels of land on Haven Rd between Collins St and Guytons after buying the Customhouse late last year. The Waterfront Redevelopment Taskforce will be getting underway with design work for this area this year.

Three big initiatives we will be pushing hard for progress on from Government in 2025 are Cabinet approval for the major redevelopment of Nelson Hospital, design work for the Hope Bypass and a positive decision on the re-establishment of NMIT as an independent institution.

Other Council challenges this year include concluding Plan Change 29 on housing intensification and developing our long-term strategy on Climate Change.

We have a big and busy year ahead.

Mayor
Nick Smith



PUBLIC TRANSPORT BEE CARD TERMS AND CONDITIONS ARE CHANGING



The Bee Scheme is updating its expiry terms and conditions on 27 February 2025 in preparation for Motu Move, a new national ticketing and payment solution.

Motu Move is rolling out region-by-region offering new ways to pay for public transport in New Zealand. This means fair and consistent conditions need to be set for the expiry of Bee Cards for all Bee regions.

To read all terms and conditions go to beecard.co.nz/pages/terms



NELSON TASMAN URBAN DESIGN PANEL - CALL FOR NOMINATIONS



Nelson City Council is seeking built-environment professionals to provide independent design reviews on projects across Nelson and Tasman.

The purpose of the Nelson Tasman Urban Design Panel is to assist both Nelson City Council and Tasman District Council with achieving a high standard of design quality by providing a cross-disciplinary review of projects and identifying areas for improvement early on in the design process.

The Councils are undertaking a refresh of the Panel with the aim of streamlining applications and achieve a good balance of skills, expertise and experience. The Panel will provide independent design review for private and public developments to support the well-functioning urban environment across Nelson and Tasman.

We are seeking approximately 10 built-environment professionals from the core disciplines of Urban Design, Architecture, Landscape Architecture, Planning, and Property Development, Ngā Aho, or cultural specialist to form the foundation of the Panel.

[More info here](#)



Te Kaunihera o
Whakatū

SHAPE.NELSON.GOV.TZ

NELSON FRINGE FESTIVAL

6 - 15 March 2025

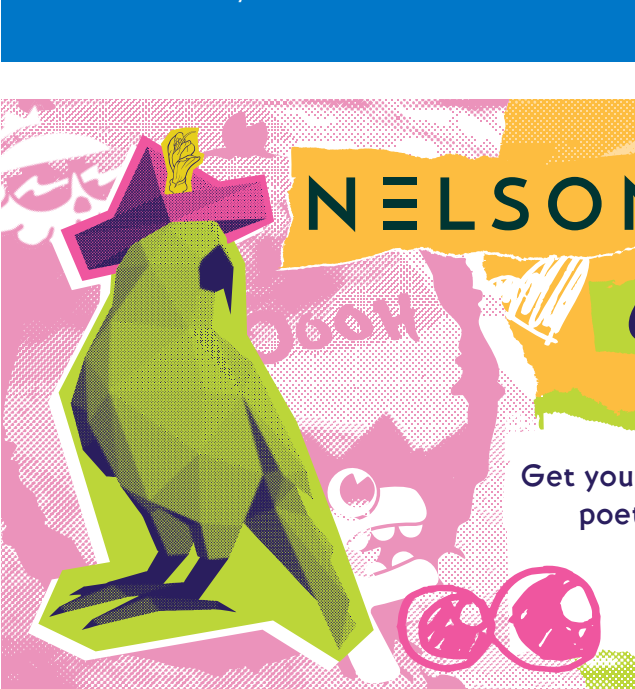
www.nelsonfringe.co.nz

Get your Fringe on with theatre, comedy, cabaret, music, poetry, improv, kids shows and oh so much more.

Most shows are about an hour.

Tickets \$18 + bf

Kids/Youth shows \$10/\$14 + bf



Our Waste Plan in a Nutshell

Why does this Plan matter to you?

We are preparing a new Nelson Tasman Waste Management and Minimisation Plan which affects something we all deal with every day – waste!

The direction of this plan could make a difference to you – it looks at areas like recycling; supporting everyone to reduce waste (and greenhouse gas emissions); how we use our landfill, recovering more resources like construction waste, what to do with waste during a natural disaster, and many other things.

We're excited about the opportunities to do more!

Nelson City Council and Tasman District Council share this plan, and this summary will give you an overview of what the new plan is all about, how you can help us become **'Waste free together'** and how you can have a say.

Our Vision: Waste Free Together

By 2050, Nelson Tasman is a low waste, low emissions society, built upon a circular economy and a resilient waste system. Being good ancestors, we cherish our inseparable connection with the natural environment and look after the planet's finite resources with care and responsibility.

Our Goals and Objectives

Goal 1



Reduce resource consumption and prevent waste being generated in the first place

- The councils, iwi, business, government and the wider community support building a low-emissions, low waste, circular economy
- Community-wide actions are supported to reduce resource use and design out waste
- Reliable data is available to inform decision-making.

Goal 2



Keep resources in use as long as possible and recover value

- Producer responsibility is extended, leading to more resources being recovered and valued
- Accessible resource recovery infrastructure and services exist in the region
- The types and quality of materials recovered for beneficial reuse and recycling are continuously improving.

Goal 3



Protect people and the natural environment from the harmful impacts of waste

- Our communities ensure waste is managed to minimise adverse impacts
- Evidence-based decision-making includes a focus on reducing waste-related greenhouse gas emissions
- Regional waste systems are resilient to the impacts of climate change, disasters and natural hazards
- Disaster waste is managed in ways that keep communities safe and, where possible, materials get recovered for beneficial reuse.

Our Targets We are proposing three targets to measure our progress:

Target #1



Avoid waste generation

- Reduce waste generation by 10% per person by 2035 from current levels.

Target #2



Reduce waste disposal

- Reduce waste disposed to landfill by 30% per person by 2035 from 2017/18 levels.

Target #3



Minimise waste emissions

- Reduce landfill biogenic methane gas emissions (greater than 85% on 2017 baseline); and utilise at least 75% of the captured landfill gas for beneficial use by 2035.

In addition to the proposed regional target measures we have a range of regional progress indicators that will help us monitor progress along the way.

Our Councils' Regional Action Plan

This is a summary of our five focus areas, and examples of the actions we are considering (either jointly or individually depending on each district's priorities). Some of these actions are already happening. Any new actions will depend on factors such as available funding, affordability and would need to be approved through our long term plan.

Below are summarised actions, for the full set of 28 actions read our plan at shape.nelson.govt.nz/rethink-waste

Focus area one:

Strengthen partnerships and collaborative efforts



- Strengthen partnerships with Te Taihū iwi
- Improve data collection and reporting
- Strengthen and develop relationships to build a shared regional approach.

Focus area two:

Prioritise waste prevention, reuse, repair and repurpose activities



- Maintain and expand waste minimisation programmes
- Support waste minimisation in councils' activities and operations
- Continue to provide grants that enable our community to avoid, reduce, reuse and repair.

Focus area three:

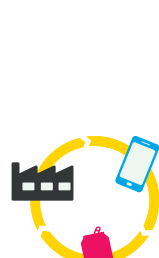
Address the impacts of climate change & natural hazards on the region's waste and resource recovery systems



- Investigate and implement where appropriate ways to reduce greenhouse, gas emissions associated with waste activities and infrastructure
- Develop a joint approach to disaster waste management and planning
- Improve our ability to respond and recover from waste-related climate change impacts.

Focus area four:

Enhance efforts to recover and divert resources from being disposed to landfill



- Investigate, and implement if appropriate, new methods to increase recovery rates for key waste streams
- Support mandatory and voluntary product stewardship programmes
- Investigate, and implement if appropriate, methods to reduce soils and other inert materials disposed to landfills.

Focus area five:

Enable waste solutions that take care of people and the environment



- Manage the landfills to ensure long term provision of services and provide safe and equitable access to waste management services and facilities
- Regularly review the provision and cost of waste management services
- Implement where appropriate activities to increase the region's capacity to recover and treat hazardous waste
- Implement if appropriate, strategies to reduce the impacts and occurrences of inappropriate waste disposal practices.

Submit and read more here: shape.nelson.govt.nz/rethink-waste



Rethink Waste Whakaarohia



Nelson City Council
Te Kaunihera o Whakatū



tasman
Te Kaunihera o
te tai o Aorere

Councillor's Comment

It's been part of Nelson in summer for 25 years, a big outdoor concert with a 50-piece orchestra accompanying a mix of opera and contemporary singers.

Opera in the Park – now known as New Zealand Sotheby's International Realty Nelson Opera in the Park – is a winning formula.

The lineup this year is the 20th musical programme I have put together for the event, celebrating great music in the perfect summer setting here in Nelson.

Over the years, it has been a real treat to work with a host of formidable talent, as well as some great orchestral resources – the Nelson Symphony Orchestra, Orchestra Wellington, the New Zealand Symphony Orchestra and lately, the Christchurch Symphony Orchestra.

Since our first event in 1999 at Saxton Field, we have enjoyed many great nights together with opera stars including Dame Malvina Major, Iosefa Enari, Deborah Wai Kapohe, Ben Makisi, Linden Loader, Patrick Power, Jud Arthur, Christopher Doig, Helen and Margaret Medlyn, Pene Pati, Amina Edris, Madeleine and Anna Pierard, Aivale Cole, Joel Amosa, Anna Leese, Simon O'Neill, Jared Holt, Jonathan Lemalu, Eliza Boom and, of course, Dame Kiri Te Kanawa.

Over the years we have also featured many contemporary artists including Hayley Westenra, Dave Dobbyn, Sir Howard Morrison, Hollie Smith, The Topp Twins, Julia Deans, Don McGlashan, Dame Hinewehi Mohi, Jackie Clarke, Whirimako Black, the Modern Māori Quartet, James Morrison, Tami Neilson, Annie Crummer, Bic Runga and Stan Walker with conductors including Uwe Grodd,

Ken Young, Marc Taddei, Hamish McKeich and David Kay.

This year's show on Saturday, 15 February at Trafalgar Park celebrates women in song with acclaimed soprano Emma Pearson alongside some of Aotearoa's contemporary divas – Music Hall of Fame's Annie Crummer (Netherworld Dancing Toys, When the Cat's Away), soul and R&B star Deva Mahal (daughter of American blues musician Taj Mahal), Betty-Anne (Ardijah), jazz queen Naomi Ferguson (The Music is Bond) and Nelson jazz songstress Tessa Quayle.

Rising tenor star in the opera world Emmanuel Fonoti-Fuimaono will be joining the lineup.

Our support acts this year feature Midnight Swim, Nelson's newest five-women-one-man vocal folkly pop group plus guests, and our acclaimed NBS Nelson City Brass will perform, after taking second place in the A-grade section of the hotly contested National Brass Band Championships last year.

I'm looking forward to presenting the event to Nelson again and know it's going to be a diverse and fun show – a unique and rare treat for the top of the south. Pack your chilly bin and head to Trafalgar Park on the 15th – you won't regret it.



Councillor Pete Rainey

CHECK OUT THE SUMMER EVENTS GUIDE TO SEE WHAT'S ITSON.CO.NZ



Age no barrier to entrepreneurship

Nelson Tasman Chamber of Commerce (NTCC) has launched the second year of its entrepreneurship programme, PRIMETIME, designed for entrepreneurs aged 50 and above in Nelson City.

Building on the success of 2023-2024, PRIMETIME continues to offer invaluable business support to those looking to start or expand their ventures. Supported by the Nelson City Council's "City for All Ages" strategy, this initiative aims to give residents over fifty the opportunity to run their own business, promoting both individual well-being and economic growth.

Participants in PRIMETIME will receive:

- One-on-one mentoring tailored to their business goals
- Access to professional development through NTCC's training programmes

Networking opportunities at the Chamber's monthly Business After 5 events. Project Manager Stephen Broad-Paul shares, "We're thrilled to help senior entrepreneurs bring their ideas to life once again," says project manager Stephen Broad-Paul. "The wealth of experience people over the age of fifty bring to our business community is invaluable. By offering this programme for a second year, we're reinforcing our belief that age should never limit entrepreneurial potential."

Applications for the 2025 PRIMETIME programme are now open

Interested Nelson City residents aged 50 and above can apply through our website at www.primetime.org.nz.



A business start-up programme for Nelson's 50+ entrepreneurs

Are you:

- A Nelson City resident aged over 50 or above?
- Planning to start a business?
- Looking to turn your business idea into reality?
- Seeking the knowledge, networks, and confidence to succeed?

Register for PRIMETIME and get the support you need to establish and grow your business venture.

Take the first step towards your entrepreneurial journey today.



GO BY BIKE DAY BREAKFAST PARTY

Ditch the drive and spin your spokes, Go By Bike Day is back in 2025. Brought to you by Nelson City Council and Sport Tasman, cycle to work and pick up a free breakfast!

Check out the dates and details here:



Upgraded Outdoor Exercise Equipment

Maitai Walkway, near Riverside Pool

 Nelson City Council | Te Kaunihera o Whakatū



Make gains on the Maitai

The outdoor exercise station located along the Maitai River Walkway, near the Collingwood Street Bridge, has some new equipment.

The newly installed equipment is designed to provide a full-body workout, with each piece carefully chosen to offer specific benefits for users of all fitness levels and abilities. Additionally, QR codes are included on the equipment to provide instructions and guidance for proper use.

The removed equipment was damaged in the August 2022 flooding, with some parts rusting due to saltwater exposure. Council staff will assess the damage to the equipment and, where possible, repair it for reuse in another park.

The new equipment includes a dual pull-up machine, a combi machine, leg press and bench.



MEETINGS

Hearing Panel 9am	12 Feb
Nelson Regional Sewerage Business Unit - Boardroom, Best Island, Richmond 10am	12 Feb
Council meeting 9am	13 Feb
Joint Shareholders Committee - Tasman District Council Chamber, 189 Queen Street, Richmond 9:30am	25 Feb
Audit, Risk and Finance Committee 9am	26 Feb
Saxton Field Committee - Tasman District Council Chamber, 189 Queen Street, Richmond 1pm	27 Feb

Changes to meetings

Joint Nelson Tasman Regional Transport Committee - Tasman District Council Chamber, 189 Queen Street, Richmond - previously advertised to take place at 1pm on 20 February 2025
1pm **10 Mar**

Chief Executive Employment Committee - Mayor's Office, Floor 2B, Civic House, 110 Trafalgar Street, Nelson - previously advertised to take place at 2pm on 26 February 2025
3pm **26 Feb**

For a full list of meetings go to:

nelson.govt.nz/meetings



To read the latest updates or sign up for Our Nelson by email go to:

our.nelson.govt.nz

Change to Customer Service Centre opening hours

Our Customer Service opening hours have changed slightly for Tuesdays and Wednesdays.

- **Tuesday:** open at 9:00 am *changed from 8:30 am previously
- **Wednesday:** open at 8:30 am *changed from 9 am previously

- **Monday:** 8:30 am
- **Tuesday:** 9:00 am

For the full list of opening hours and Customer Service Centre contact information, visit:



nelson.govt.nz/contact/

SECOND-HAND SUNDAY

  **RETHINK WASTE**

Declutter for free with Second Hand Sunday

Make your new year's clear out a breeze. Take part in Second Hand Sunday, happening 9am-2pm on Sunday 16 February.

Second Hand Sunday is a fun way for Nelson and Tasman residents to declutter and re-home unwanted household goods for free. Anything from chairs, books, clothing, or leftover bits and pieces from building projects. Please don't put out food, dangerous goods like faulty electrical equipment, or chemicals.

If you have items you want to give away, simply register online before 10am Friday 14 February to be included on the list of participating addresses. Print off a poster to put on your mailbox and put your items on your driveway (not on the footpath) at 9am on the day. Homeowners are responsible for taking back in anything that doesn't go on the day.

A list and map of participating addresses will be available to download from 12pm Friday 14 February. Check out the map to plan your fossicking route and pick up some free second-hand items!

The event will take place rain or shine. For more information and to sign up, go to: nelson.govt.nz/second-hand-sunday

Strawbridge Sq

Stormwater Upgrade

End date: January 2025

Location: Strawbridge Sq / Songer Street

Benefit: Improve stormwater network capacity

Riverside Pool Heating Upgrade

End date: February 2025

Location: Riverside Pool, Nelson

Benefit: Equipment Upgrade

Atawhai Trunk Main

End date: March 2025

Location: 12 Wakapuaka Road (SH6)

Benefit: Improve water supply

Stoke Library Roofing Replacement

End date: April 2025

Location: Stoke Library

Benefit: Replace roof to prevent leaks

Slips 16 – Grampians Reserve

End date: April 2025

Location: Trafalgar St South, Van Diemen St

Benefit: Property protection

Slip 7 – 9A Miro Street

End date: April 2025

Location: 9A Miro Street

Benefit: Property Protection

Cambria St to Stanley

Whitehead Park Path

End date: June 2025

Location: Cambria St to Stanley Whitehead Park

Benefit: New link between Cambria St and the existing Stanley Whitehead reserve track to improve access in and out of the reserve



IT'S ON... at a Council venue near you



Trafalgar Centre

Shihad – Friday 7 February, 5pm – 10pm

1903 Square

Monopoly Launch featuring Mr. Monopoly Friday 14 February, 12pm – 2pm

Summer Sing Fest – Saturday 22 February, 10am – 3pm

Trafalgar Park

NZ Sotheby's International Realty Opera in the Park Saturday 15 February, 5:30pm – 10pm

Founders Heritage Park

Hours: 10am – 4:30pm Daily

Food Truck Fridays – Fridays, 4pm – late

Summer Reads – Daily, during opening hours

Sunday Sesh: Decks on the Deck Sundays, 3pm – 6pm

Jazz on the Village Green: Flightless Birds Sunday 2 February, 1pm – 3pm

Waitangi Day – Thursday 6 February, 9am – 3pm

Jazz on the Village Green: Brazilian Social Club – Sunday 9 February, 1pm – 3pm

Jazz on the Village Green: Colette Jansen Trio – Sunday 16 February, 1pm – 3pm

Jazz on the Village Green: Not Too Dry Sunday 23 February, 1pm – 3pm

Trafalgar Street Hall

Yoga – Monday and Friday, 6:30am – 7:30am

Vinyasa Flow Yoga – Wednesday, 5:30pm – 6:45pm

Gentle Flow Yoga – Thursday, 5:30pm

Melrose House

Hours: Monday: 9am – 3.30pm, Tuesday to Sunday: 9am – 4pm, closed public holidays

Isel House and Park

Summer Hours:

Sunday, Monday and Public Holidays: Closed

Tuesday – Friday: 10am – 3pm

Thursday Market: 4:30pm – 7:30pm

Saturday: 12pm – 4pm

Pūtangitangi Greenmeadows Community Centre

Floral Fantasy Multi Media Workshop Saturday 15 and Sunday 16 February, 10am – 4pm

Nelson Public Libraries:

Elma Turner Library

Hours: Monday, Tuesday, Thursday, Friday: 9:30am – 6pm

Wednesday: 10am – 6pm

Saturday: 10am – 4pm

Sunday: 1pm – 4pm

Community Corner with Ancestors Attic Wednesday 26 January and 29 February, 10:30am – 12pm

Library Knitters – Thursday 30 January and 13 & 20 February, 10am – 12pm

Device Advice – Thursday 30 January and 13 & 20 February, 2pm – 3pm

Tea and Talk – Friday 31 January and 7, 14 & 21 February, 10am – 11:30am

Quiet Hour – Tuesday 4, 11, 18 & 25 February, 9:30am – 10:30am

Dementia Friendly Reading Group – Wednesday 5 February, 10am – 11am

Becoming Tangata Tiriti – a Talk with Author Avril Bell Wednesday 5 February, 12:15pm – 1:30pm

Kōrero Te Reo Māori – Saturday 8 & 22 February, 10am – 11am

Frank Baby the Therapy Dog Saturday 8 & 22 February, 11:30am – 12:30am

Ruru the Therapy Dog – Saturday 8 & 22 February, 1pm – 2pm

Bookchat – Tuesday 11 February, 10:30am – 12pm

STEM Writers – Tuesday 11 & 25 February, 1pm – 3pm

Summer Reading Challenge Finale Party for Kids – Wednesday 12 February, 3:30pm – 5pm

Summer Reading Challenge Wrap Up Evening – Wednesday 12 February, 5:30pm

All On Board with Age Concern Thursday 13 February, 2pm – 4pm

Alzheimers Nelson Tasman Drop-In Thursday 20 February, 10am – 11am

Nightingale Library Memorial

New Temporary Hours: Monday, Tuesday, Thursday, Friday: 9:30am – 4pm

Wednesday: 10am – 4pm

Saturday: Closed

Sunday: 1pm – 4pm

Device Advice – Wednesday 15 January, 10:30am – 11am

Nellie Knitters – 29 January and 5, 12, 17 & 26 February, 1pm – 3pm

All on Board with Age Concern Tuesday 25 February, 2pm – 4pm

Stoke Library

New Temporary Hours: Monday - Friday: 1pm – 5:30pm

Saturday: 10am – 1pm

Sunday: Closed

Franky Baby the Therapy Dog Saturday 8 & 22 February, 11:30am – 12:30pm

Museums and Galleries:

Broadgreen House and Samuels Rose Gardens

Summer hours:

Sunday – Friday 11am – 4:30pm, Saturday 1:30pm – 4pm

Mono-Printing on Fabric Workshop – Sunday 9 February, 10am – 4pm

Assertiveness Training Course Wednesdays 12, 19 & 26 February, 6:30pm – 7:30pm

Stitch Stories Textile Collage Workshop Sunday 23 February, 10am – 4pm

The Suter Art Gallery & Theatre

Hours: 9:30am – 4:30pm Daily

Power of Process – Sunday 16 February, 9:30am – 4pm

Refinery ArtSpace

Hours: Monday – Friday from 10am – 5pm, Saturday from 10am – 2pm

Surrender to Form – During opening hours until 8 February

When Worlds Collide – Patrick Malone and Shruti Yatri – During opening hours until 8 February

Hello... – Sigi Kennedy During opening hours until 8 February

Nelson Provincial Museum

Hours: Weekdays from 10am – 5pm, Weekends & Public Holidays from 10am – 4:30pm, closed Good Friday & Christmas Day

Six Extinctions – On until Sunday 9 February 2025, during opening hours



A full list of meetings for 2024 are available on the Council's website:
nelson.govt.nz/council/council-structure/council-meetings

Subscribe to the Our Nelson e-newsletter and stay up to date with the latest news, information and events happening in Nelson City.



our.nelson.govt.nz/subscribe



Nelson City Council
 Te Kaunihera o Whakatū



Live in Nelson City but want to know more about what's happening across the wider region?

Sign up to receive Tasman District Council's *Newsline* for all the latest news from Tasman. Visit tasman.govt.nz/newsline to sign up.

