

# Tō Tātou Whakatū Our Nelson



**Multicultural**

**mural brings**

**Whakatū together**



A striking new mural celebrating the vibrant cultural diversity that makes Nelson unique now welcomes passersby on Nile St.

Painted by a team of about 30 volunteers over two and a half weeks and attached to the hoardings in front of the Trinity Presbyterian Church, the mural features the words “thanks” and “thank you” in 46 different languages.

The languages include Mandarin, Spanish, Arabic, Fijian and Afrikaans, representing the many different ethnic backgrounds that help make Nelson a diverse, welcoming and inclusive place to live.

Nelson is one of the most diverse cities in Aotearoa New Zealand. Our community is made up of more than 150 ethnicities and is home to almost 2000 people with refugee backgrounds. About 24% of the population was born overseas.

The mural project is a collaboration between Multicultural Nelson Tasman, Arts Council Nelson, Make Shift Spaces, and Nelson City Council through the Shared Communities Initiative. It aims to enhance the well-being of our migrant and former refugee communities by supporting community-led accessible art, culture, and heritage activities in the region.

Karolina Serrano, Cultural Navigator for Shared Communities Whakatū Nelson, says it was amazing to see how art can unite and strengthen the community.

“It was powerful to work in a space where language wasn’t a barrier, and everyone felt welcomed and valued. Now that the mural is finished, seeing people stop in the street to take photos next to their mother tongue on the wall—knowing they feel proud and recognised—has been incredibly heartwarming.”

The mural has been painted using high-quality materials and a protective coating, and its panels can be easily relocated to other locations within the city once work on restoring the church is complete.

Special thanks go to Scott’s Construction for providing the materials and site, as well as Placemakers and Bays Joinery for their generous contributions.

This project was partially funded through a Nelson City Council’s Arts/Heritage Partnership Grant of \$3000.

To find out more about the Shared Communities Initiative, visit: [sharedcommunities.org.nz](http://sharedcommunities.org.nz)

To find out more about the Arts/Heritage Partnership Grant visit: [shape.nelson.govt.nz/arts-heritage-partnership-grants](http://shape.nelson.govt.nz/arts-heritage-partnership-grants)

## Summer water quality monitoring

Nelson City Council is committed to ensuring the safety and enjoyment of our beautiful bathing sites. Here’s the latest water quality update for our popular spots.

We are monitoring sites twice weekly until the end of February.

After hearing that a person appears to have experienced an allergic response after swimming in the Maitai, we increased monitoring efforts across three additional bathing sites in the Maitai River: Black Hole, Dennis Hole, and Sunday Hole.

The results of this extra monitoring came back and confirm that cyanobacteria levels at all monitored sites are considered low at 3% (low

range 0–20%) or below:

- Maitai at Maitai Camp: 2.5%
- Maitai at Dennis Hole: 0.25%
- Maitai at Avon Terrace: 3%
- Maitai at Black Hole downstream of swimming hole: 3%
- Maitai at Black Hole upstream of swimming hole: 0%

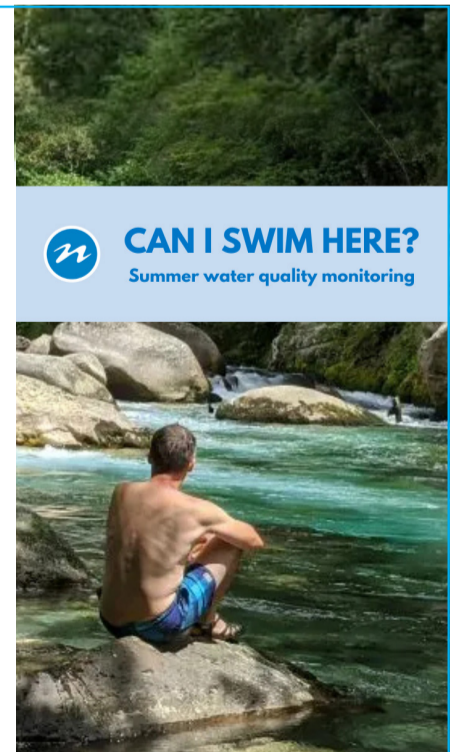
At the moment, caution is advised at Cable Bay Beach and The Glen, however all other swimming sites

including: the Maitai Campground, Sunday Hole, Girlies Hole, Tāhunanui Beach, Monaco Pier, Atawhai – Nelson Haven and Wakapuaka – Paremata Flats are suitable for swimming.

Before you (or your dog) dive in, check the current water quality status on our website:

[nelson.govt.nz/environment/water-3/recreational-bathing-water-quality/can-i-swim-here/](http://nelson.govt.nz/environment/water-3/recreational-bathing-water-quality/can-i-swim-here/)

Stay informed and swim safe.





We are at the start of a period of fundamental change for our city centre. The infrastructure works starting this year will be ongoing, and as the projects are completed, the way our city centre feels, looks, and functions will also start to change with them.



In my early years growing up in Nelson, there was little in the city centre that held my interest outside of the old arcade. There weren't many spaces where, as a young person, we could just be ourselves and exist. This has started to change in recent years, and it's something I am really proud of. Places like the top of Trafalgar Street have added immensely to the overall vibe of the city, and these new projects build on that same principle—if you create an experience that people enjoy, they'll want to keep coming back.

Our retail and hospitality businesses are doing their best to succeed in a changing environment. With the rise of online shopping, the city centre must offer more than just products—it needs to provide an experience. From the moment someone arrives in the city, meeting friends, shopping, enjoying a coffee, or going out for lunch, to the moment they leave we want people to feel like they've had a little bit more than the average day out.

This isn't the first time Nelson's city centre has undergone a major transformation. The city centre as we know it today didn't exist in its current form until the 1990s, when there was a dramatic investment and overhaul. That was nearly 30 years ago so we are well overdue a refresh. And if we want to stay relevant and continue to evolve as a city, we have to embrace change. Investment and confidence from Council, can inspire the same from the private sector.

When you step out of a shop or onto Bridge Street, we want you to know exactly where you are. To achieve that, we've partnered with iwi to tell the stories of this place—stories that go back hundreds of years. These stories are meaningful, and they help all of us locate ourselves not just as a community, but as a community here in Te Tau Ihu, at the top of the South Island. I walk down these city streets every day, and it's exciting to think how these stories will be brought to life in ways that connect us more deeply to this place.

So, while these projects involve physical transformations, they're also about creating a cultural shift in how we view and use the space. Ten years from now, my dream is that when you step into the city centre, you're stepping into a place filled with activity—whether that's due to direct upgrades by Council, more people living in and around the city centre, or a thriving, creative hospitality and retail scene. The city centre will be a permanent hub of activity, a place where people want to be.

I want to be upfront about the disruption these works will create, there will be times over the next few years where city centre work is extensive. This will be hard for some of our businesses and potentially frustrating for you, but without this disruption we won't be able to change our city for the better. We know the Bridge to Better project, in particular, will be a major undertaking, but the upcoming works cover a wider area of the city. One of the key focuses for me is on how we program these works to minimise disruption while telling residents, visitors, and businesses, "we are open for business," and ensuring people know the city centre is still a good place to visit.

At the heart of this disruption management is an ongoing conversation. This project isn't just Nelson City Council's; it's a partnership with everyone who uses these spaces. We know there's a trade-off between getting things done quickly and minimising disruption. Right now, we're still working on that balance, but the options in front of us include things such as whether to complete a larger section in one go, which could mean more intense but shorter disruptions or take more time overall, with less disruption. It's a tricky balance to strike and one that we have already been discussing in detail with businesses on Bridge Street and other key stakeholders.

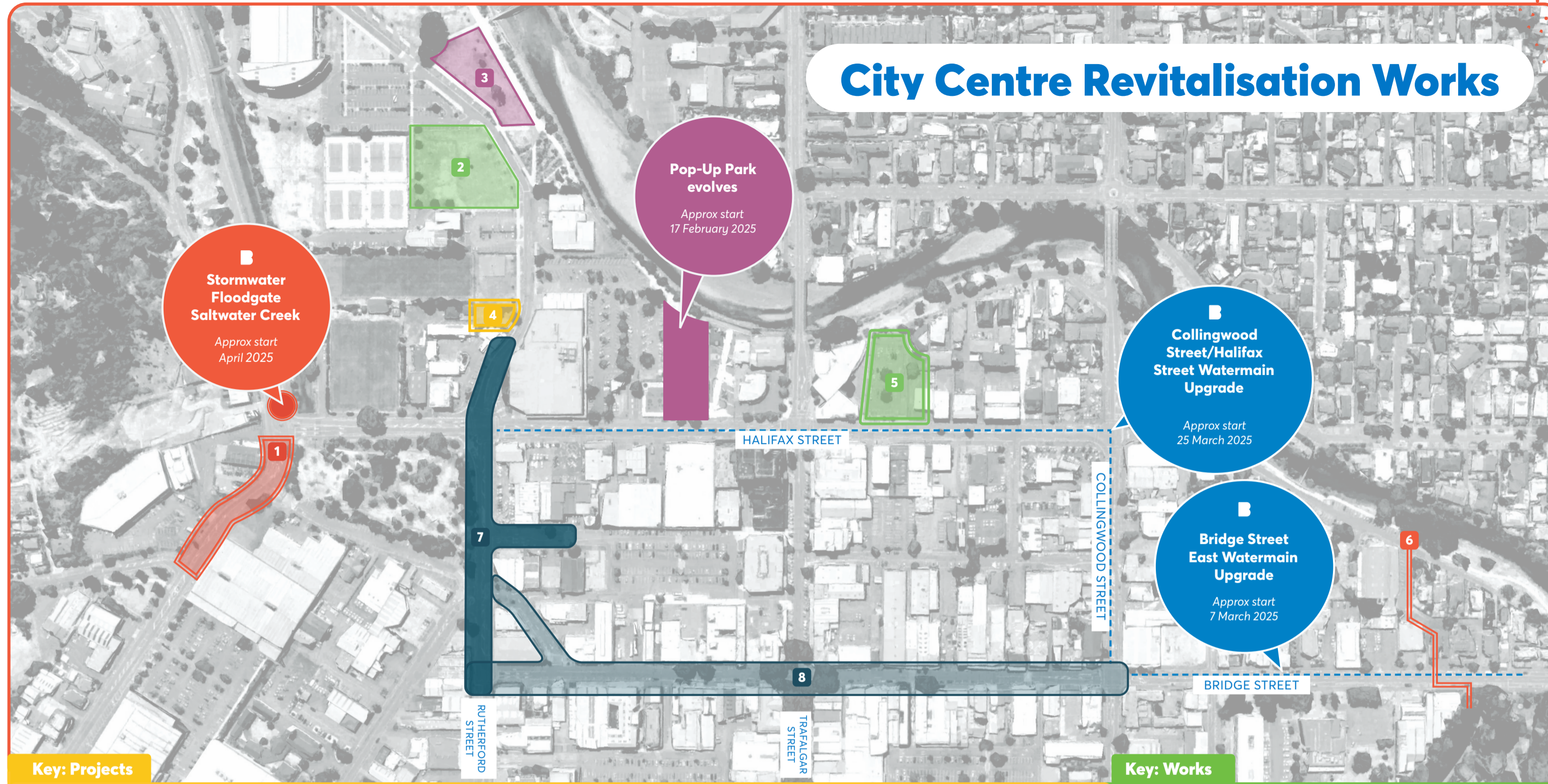
These changes are exciting, and they're also necessary if we want to grow and thrive as a city. We are working hard to ensure the process is as smooth as possible, but we know it won't always be easy. Change never is. But by continuing to invest, adapt, and listen, we can create a city centre that's vibrant, welcoming, and truly reflects the best of Whakatū Nelson.

~ Deputy Mayor Rohan O'Neill-Stevens  
City Revitalisation Taskforce Chair

WATCH VIDEO NOW



youtu.be/  
Ym7acSgJQ4E



For more information on City Centre Revitalisation Works visit: [shape.nelson.govt.nz/city-centre-projects](https://shape.nelson.govt.nz/city-centre-projects)

### Stormwater Floodgate Saltwater Creek

The floodgate is an integral part of the upgrade of the stormwater network.

Connecting to a culvert, the floodgate helps to control the flow of water during a weather event. In flat areas like Nelson City, when a stormwater network is either coastal or connects to a river that can change heights due to flooding (eg. the Maitai River), a floodgate is installed on the end of the system to help high tides and salt water/flood water from going back into the culvert and through the stormwater network.

### Pop-up Park evolves

Nelson City Council's lease for the popular Riverside Youth Pop-Up Park on Halifax Street is coming to an end, following multiple lease extensions which are now no longer feasible.

The lease arrangements require the Council to remove the park equipment and remediate the site by mid-March 2025. Work to deconstruct the Pop-Up Park will begin in mid-February, with staff currently finalising arrangements with landowners and contractors. But it's not goodbye, it's 'see you soon' for the park's play equipment. Council is looking at possible alternative sites within the city so Nelson's young people can still ride the pump track or test their imagination with the blue building blocks. Updates will be provided as more information becomes available.

The Pop-Up Park has been a success. As a tactical urbanism project, it has demonstrated the need for additional play activities in the city, which has helped build the case for the planned Rutherford Playspace.

### Collingwood/Halifax/Bridge Watermain upgrades

The upgrade of these watermains will provide a direct benefit to the CBD and wider network by supplying larger volumes of water than is currently possible.

The watermain is responsible for water that we drink, clean with and bathe in. As with the larger Bridge to Better project, the upgrade of this watermain will allow for future growth in the inner city and surrounding areas. By upgrading the watermains it will also provide alternative routes for supplying water through newer, larger mains if existing ones are damaged. Larger flows will also help immediately with fire resilience with building sprinkler supplies.



# Our Waste Plan in a Nutshell

## Why does this Plan matter to you?

We are preparing a new Nelson Tasman Waste Management and Minimisation Plan which affects something we all deal with every day – waste!

The direction of this plan could make a difference to you – it looks at areas like recycling; supporting everyone to reduce waste (and greenhouse gas emissions); how we use our landfill, recovering more resources like construction waste, what to do with waste during a natural disaster, and many other things.

We're excited about the opportunities to do more!

Nelson City Council and Tasman District Council share this plan, and this summary will give you an overview of what the new plan is all about, how you can help us become **'Waste free together'** and how you can have a say.

## Our Vision: Waste Free Together

By 2050, Nelson Tasman is a low waste, low emissions society, built upon a circular economy and a resilient waste system. Being good ancestors, we cherish our inseparable connection with the natural environment and look after the planet's finite resources with care and responsibility.

## Our Goals and Objectives

### Goal 1



Reduce resource consumption and prevent waste being generated in the first place

### Goal 2



Keep resources in use as long as possible and recover value

### Goal 3



Protect people and the natural environment from the harmful impacts of waste

## Our Targets We are proposing three targets to measure our progress:

### Target #1



#### Avoid waste generation

- Reduce waste generation by 10% per person by 2035 from current levels.

### Target #2



#### Reduce waste disposal

- Reduce waste disposed to landfill by 30% per person by 2035 from 2017/18 levels.

### Target #3



#### Minimise waste emissions

- Reduce landfill biogenic methane gas emissions (greater than 85% on 2017 baseline); and utilise at least 75% of the captured landfill gas for beneficial use by 2035.

### Focus area one:



Strengthen partnerships and collaborative efforts

### Focus area two:



Prioritise waste prevention, reuse, repair and repurpose activities

### Focus area three:



Address the impacts of climate change and natural hazards on the region's waste and resource recovery systems

### Focus area four:



Enhance efforts to recover and divert resources from being disposed to landfill

### Focus area five:



Enable waste solutions that take care of people and the environment



Submit and read more here:  
[shape.nelson.govt.nz/rethink-waste](https://shape.nelson.govt.nz/rethink-waste)



Rethink Waste  
Whakaarohia

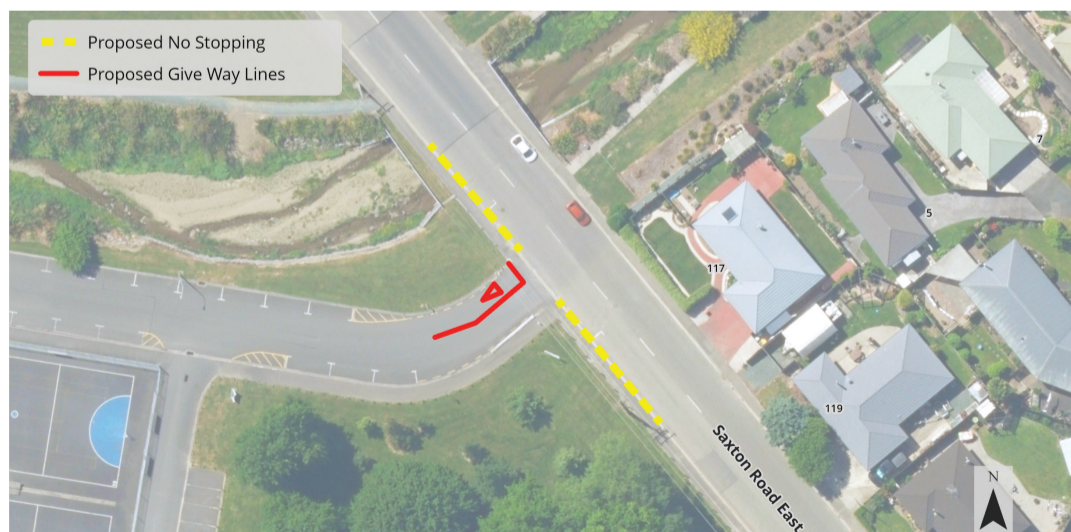


# Proposed road layout changes for public feedback

The Traffic and Parking Bylaw (2023) gives effect to road markings and traffic control devices on Nelson's roading network. Changes and updates to these schedules require consultation and feedback from effected residents, occupiers and users. The following change is being proposed to the March 27 Hearing Panel Meeting for decision:

## Proposed No Stopping on Saxton Road East at Saxton Field Western Entrance

As per clause 27 of the Traffic and Parking Bylaw (2023) – Prohibiting or Restricting Parking on Certain Roads; Council may by resolution prohibit or restrict the parking of vehicles on any roads. NCC are proposing to extend existing yellow no stopping lines on Saxton Road East at the Western entrance to Saxton Field. Due to reports of crashes and near misses at this access way, extending yellow no stopping lines will improve sightlines and visibility for users entering and exiting Saxton Field. As this proposal will result in the loss of 4 on-street carparks public feedback is being sought. Please visit [shape.nelson.govt.nz](https://shape.nelson.govt.nz) and select 'Road and Parking Changes' to provide feedback \*and see map in more detail before Wednesday March 5 2025.



A full list of meetings for 2025 are available on the Council's website:  
[nelson.govt.nz/council/council-structure/council-meetings](https://nelson.govt.nz/council/council-structure/council-meetings)

New Zealand Sotheby's International Realty **NELSON OPERA IN THE PARK** TRAFALGAR PARK SAT 15 FEB Mathews Kiske Digitella Nelson City Council Te Kaitiaki o Whakatū